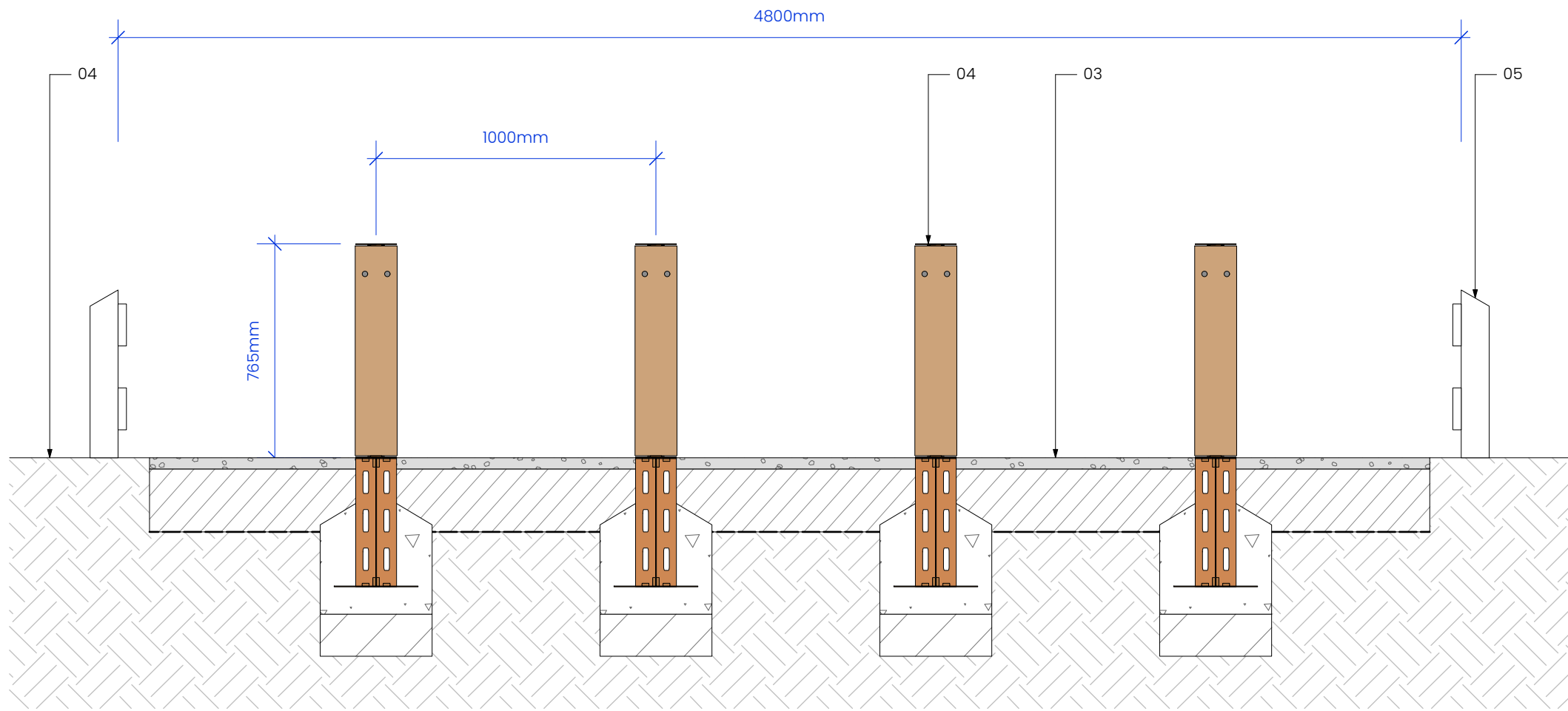
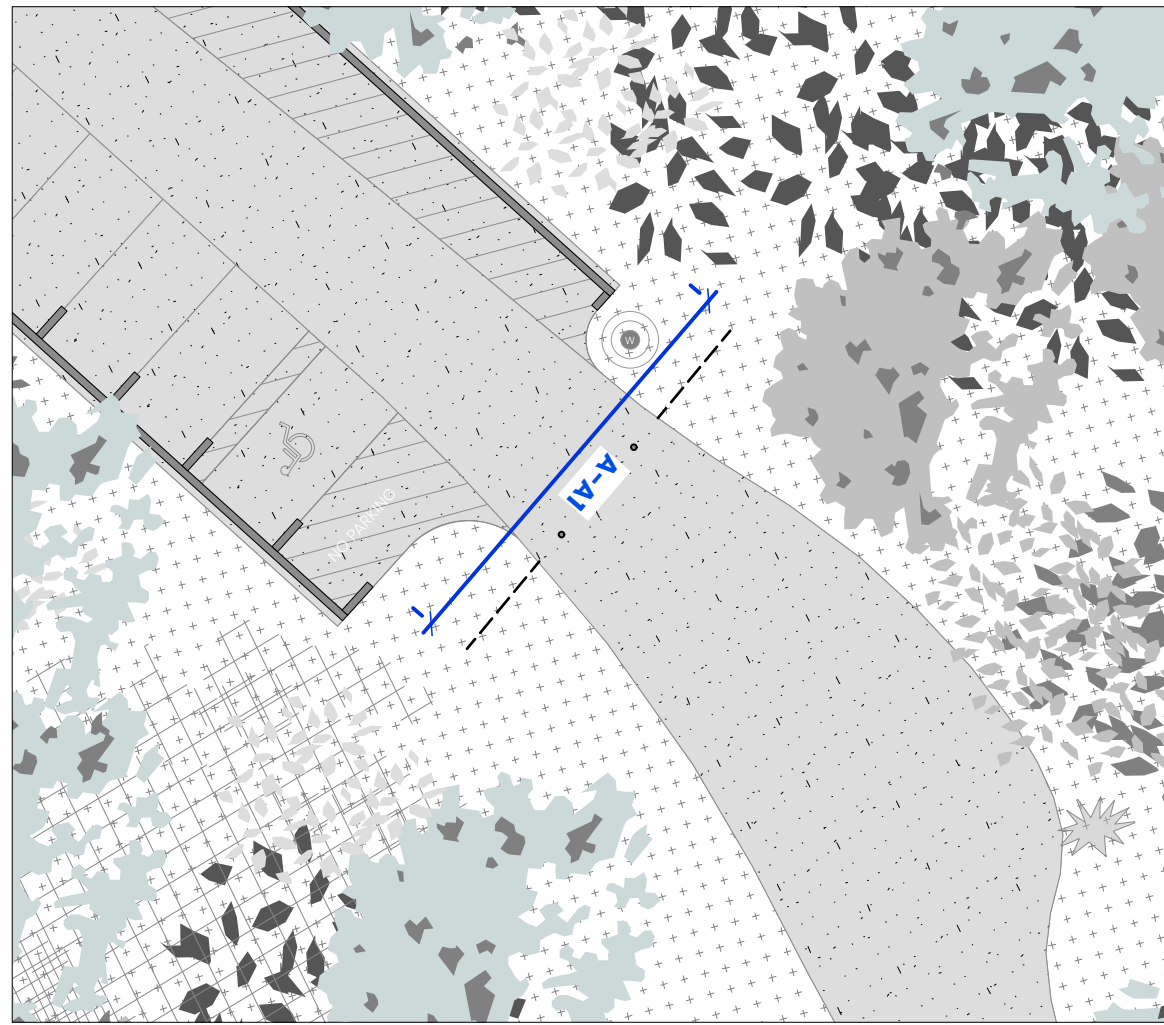


**D01** B.O.A.T Entrance (Millom Entrance) – A-A1  
Scale: 1:20



**D02** B.O.A.T Entrance (Haverigg Entrance) – B-B1  
Scale: 1:20



**D03** B.O.A.T Entrance – Location Plans  
Scale: 1:200



**NOTES:**  
1. DO NOT SCALE FROM THIS DRAWING. ALWAYS WORK TO NOTED DIMENSIONS.  
2. ALL SETTING-OUT, LEVELS AND DIMENSIONS TO BE CHECKED ON SITE PRIOR TO THE INSTALLATION OF MATERIALS AND ANY DISCREPANCIES ARE TO BE BROUGHT TO THE ATTENTION OF THE CONTRACT ADMINISTRATOR IMMEDIATELY.  
3. THIS DRAWING MUST BE READ WITH THE RELEVANT SPECIFICATION DOCUMENTS AND DETAIL DRAWINGS. ANY DISCREPANCIES MUST BE BROUGHT TO THE ATTENTION OF THE CONTRACT ADMINISTRATOR IMMEDIATELY.  
4. THIS DRAWING IS COPYRIGHT PROTECTED AND MAY NOT BE REPRODUCED IN WHOLE OR PART WITHOUT WRITTEN AUTHORITY.  
5. ALL DIMENSIONS ARE IN MILLIMETRES UNLESS OTHERWISE STATED.  
6. NOTE DRAWING SUSTAINABILITY CODE SHOWN BELOW. DRAWING NOT TO BE USED FOR CONTRACTUAL AGREEMENT WITHOUT A1 STATUS.

THIS DRAWING WAS PLOTTED ON:  
**14/08/2025**

REVISION HISTORY				
DATE	REV	ZONE	DESCRIPTION	CHK
04/06/25	P01		Issued for coordination	MDM
14/08/25	P02		Stage 4 issue	MDM

**KEY**

- 01.** TIMBER FENCE DETAIL - REFER TO DRAWING NO. 6003
- 02.** EXISTING GROUND CONDITIONS
- 03.** S2.0 STONE TO DUST BOAT SURFACING - REFER TO DRAWING NO. 6000
- 04.** TIMBER / CORTEN BOLLARD DETAIL - REFER TO DRAWING NO. 6004

**NOTE**  
SUBJECT TO ENGINEER REVIEW / COMMENT



ORIGINATOR

**W** layerstudio  
**T** 01625 523 157  
**E** manchester or  
Cheshire  
newcastle@layerstudio

**MANCHESTER** 80 Grove Street  
Willslow  
SK9 1DR

**NEWCASTLE** Studio 39  
39 High Bridge Works  
Cheshire  
Newcastle-upon-Tyne  
NE1 1EW

Layer.studio

Client  
**Cumberland Council**

Project  
**The Iron Line**  
**Millom, Cumbria**

Drawing Title  
**D | Boat Entrance Details**

Created By	Checked By	Scale	Sheet Size
CE	CL	As Noted	A1

Project Number	Originator	Volume	Level	File Type	Discipline	Number
289	LYR			XX-ZZ-DWG-L-6006		

Work Stage	Status	Revision
Stage 4	S4	P02