

DECLARATION OF PERFORMANCE

DoP number: 12703220-B1W1270

Product name:

65MM HERITAGE BLEND (PERUWELZ)

Identification code of product-type is DoP-number



Wienerberger NV

Kapel ter Bede - 8500 Kortrijk

Intended use in masonry walls, columns and partitions for:

Assessment and verification of constancy of performance:

Harmonised standard:

Notified body/ies:

unprotected masonry

System 2+

EN 771-1:2011+A1:2015

0749

Declared performance/s of a U - masonry unit

Dimensions and tolerances

			T1	R1
Length:	mm	215	± 6	9
Width:	mm	102	± 4	6
Height:	mm	65	± 3	5
Tolerance:	category	T1		
Range:	category	R1		
Flatness of bed faces:	mm	NPD		
Plane parallelism:	mm	NPD		

Configuration

Group of the unit:	-	1
Volume of all formed voids:	%	NPD
Volume of frogs:	%	< 20

Density

Gross dry density:	kg/m ³	1650
Net dry density:	kg/m ³	1750
Tolerance:	category / %	D1 / 10

Compressive strength for Category I product

Perpendicular to bedface:	N/mm ²	12
Perpendicular to header:	N/mm ²	NPD
Perpendicular to header 2:	N/mm ²	NPD

Bond strength:	N/mm ²	NPD
----------------	-------------------	-----

Thermal conductivity λ_{10} , dry, unit:	W/(m·K)	0.69	Determination method EN 1745:2012: S1
--	---------	------	---------------------------------------

Water vapour permeability:	-	$\mu = 5/10$	Tabulated min. and max. value according EN 1745
----------------------------	---	--------------	---

Durability:	category	F2
-------------	----------	----

Water absorption:	%	14	EN 772-21
-------------------	---	----	-----------

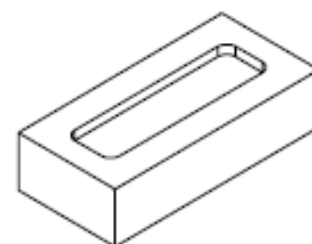
Initial rate of water absorption:	kg/(m ² ·min)	1-5	EN 772-11
-----------------------------------	--------------------------	-----	-----------

Active soluble salt content:	category	S2	EN 772-5
------------------------------	----------	----	----------

Moisture movement:	mm/m	NPD
--------------------	------	-----

Reaction to fire:	class	A1	EN 13501-1
-------------------	-------	----	------------

Dangerous substances:	-	NPD
-----------------------	---	-----



actual configuration may vary slightly

The performance of the product identified above is in conformity with the set of declared performance/s. This declaration of performance is issued, in accordance with Regulation (EU) No 305/2011, under the sole responsibility of the manufacturer identified above.

Signed for and on behalf of the manufacturer by:

2018-01-18

CEO

Caroline Van De Velde

Wienerberger NV
Kapel ter Bede - 8500 Kortrijk