

NOTES!

WALL FINISHES

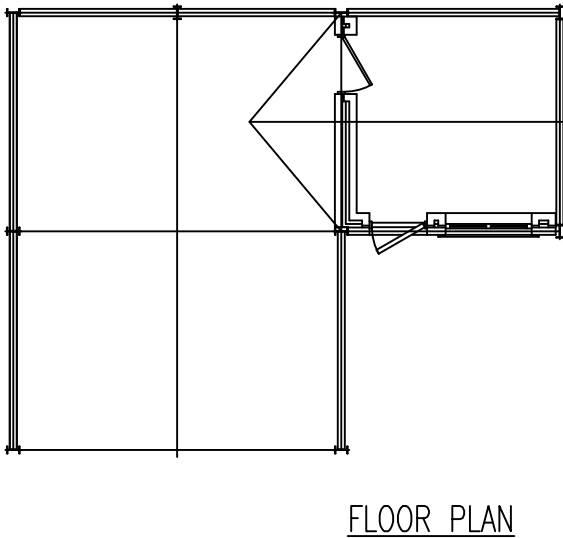
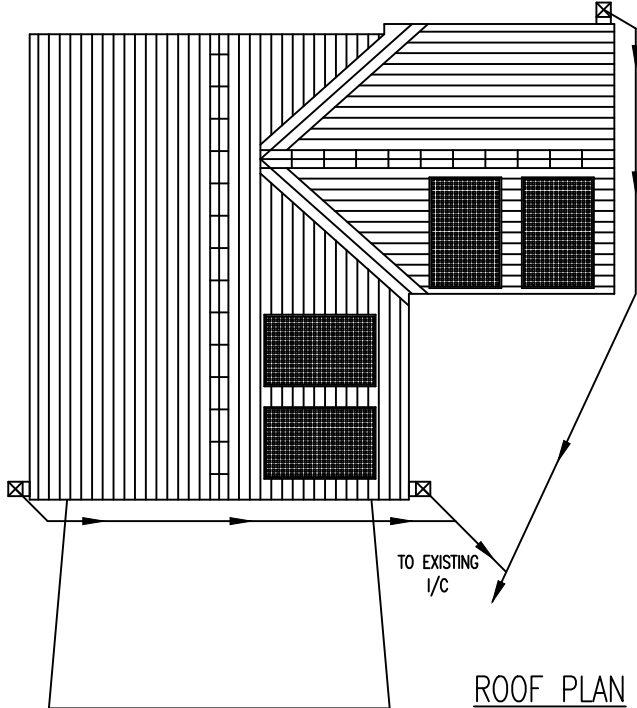
FIBRE CEMENT SHEETS OVER CONCRETE 100 THK  
RC CONCRETE PANELS.

ROOF

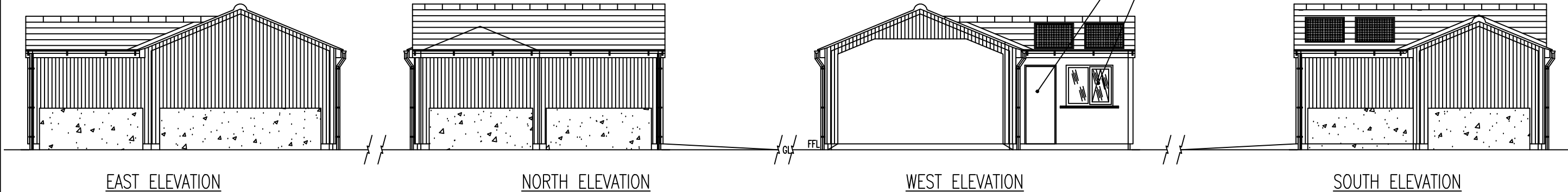
WELSH SLATES TO MATCH EXISTING HOUSE ROOF  
WITH IN-SET SOLAR PANELS.

DRAINS

Ø110 uPVC HALF ROUND EAVES GUTTERING TO Ø82  
uPVC RAINWATER DOWNSPOUTS TO BE TO TRAPPED  
BACK-INLET GULLEYS TO Ø110 U/ GROUND DRAINAGE  
PIPES SET IN 150 Thk 9mm DOWN GRANULAR PEA  
GRAVEL & SET TO FALLS OF 1:40 WHERE POSSIBLE,  
TO PICK-UP EXISTING U/ GROUND DRAINAGE SYSTEM.



762x1981H DOOR TYP  
1200x1050H WINDOW



SCALE 1:100

0 1m 2m 3m 4m 5m

A3