



Plate 1

Station Yard, Moor Row, Cleator Moor, Cumbria

An aerial view of the site in 2005 photographed from the west. At this date the site was shared by O'Connor Fencing and a firm of haulage contractors. The course of the LNW and Furness railway line and the edge of the northern station platform are clearly visible at the right hand edge of the photograph. (Photograph : Alan O'Connor)





Plate 2

Station Yard, Moor Row, Cleator Moor, Cumbria

An aerial view of the village of Moor Row from the south-east with the Station Yard site to the right of the photograph. The photograph was taken earlier in 2008. At the date of the present survey during October 2008 there are no standing buildings remaining at the site. The layout of the various dismantled railway branch lines connecting at Moor Row Junction are clearly visible.

(Photograph : Alan O'Connor)





Plate 4

Station Yard, Moor Row, Cleator Moor, Cumbria

Looking east along the southern station platform, this photograph dates to 1973. Only a single line for goods traffic from Whitehaven to Egremont and a branch line to Rowrah remain in operation. The signal box and the station house on the southern platform have already been demolished, as have the majority of the buildings to the Station Yard, which now appears disused. The empty wagons are for the local iron ore traffic. The Engine Shed recorded on the Cumbria Sites and Monuments Record (Reference No. 14804) has been totally demolished by this date. (Photograph : Alan O'Connor)





Plate 7

Station Yard, Moor Row, Cleator Moor, Cumbria

The iron foot bridge crossing the rail tracks with the road bridge behind at the western end of the station platforms. The photograph dates to 1954. (Photograph : Alan O'Connor)

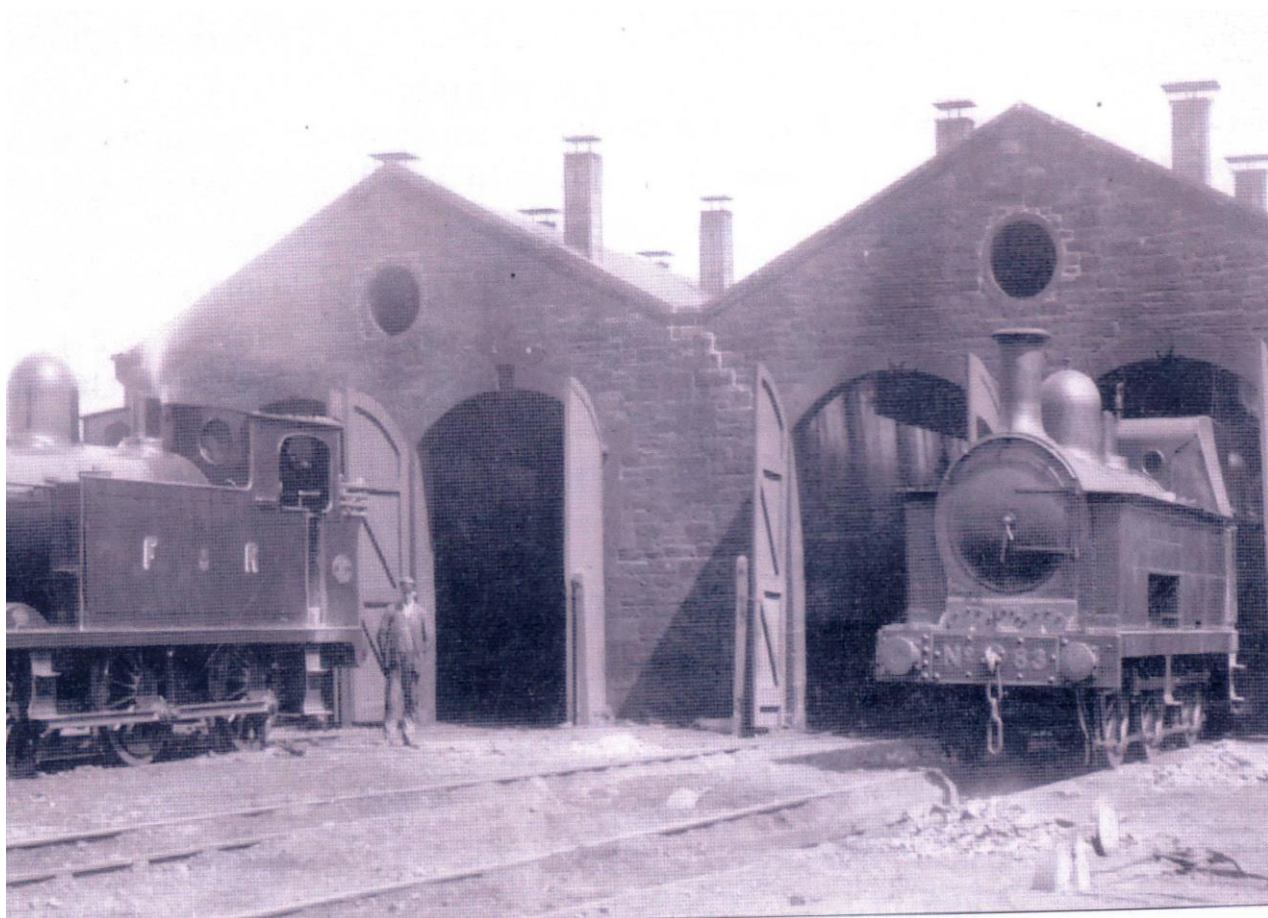


Plate 8

The Locomotive Engine Sheds at Moor Row Station Yard photographed in c. 1920. There are four railway tracks leading to four pairs of wooden doors. The two small locomotives are 0-6-0 tank engines belonging to the Furness Railway Company. The building is listed on the Cumbria County SMR (Reference No. 14804). (Photograph : Alan O'Connor).



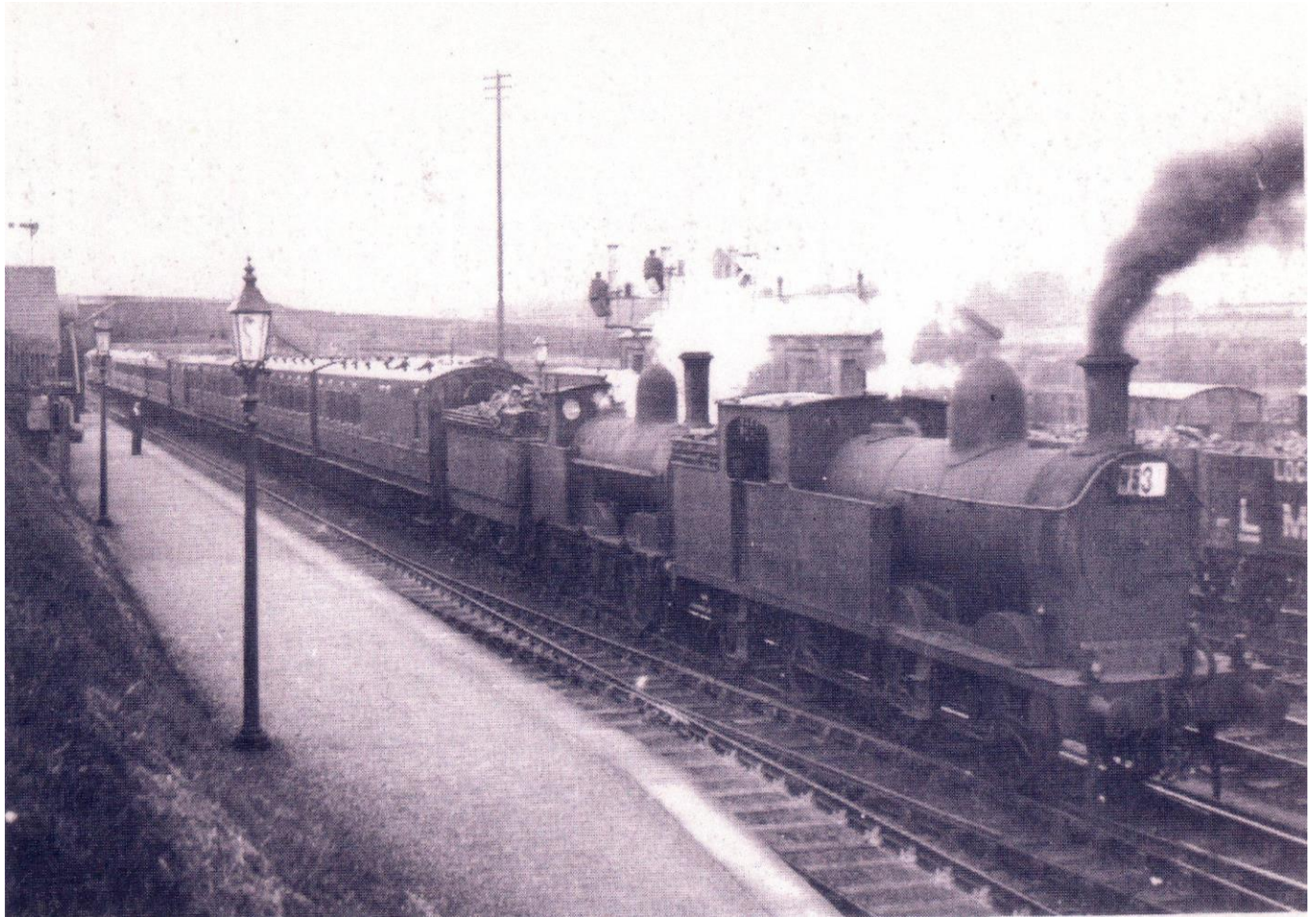


Plate 5

Station Yard, Moor Row, Cleator Moor, Cumbria

Looking west along the southern platform at Moor Row Station with the Station Yard beyond the train on the right of a photograph of 1938. The iron foot bridge and road bridge are visible on the left of the photograph. (Photograph : Alan O'Connor)





Plate 6

Looking east along the southern platform of Moor Row Station in 1954. Note the two signal boxes and the locomotive shed in the Station Yard on the left of the photograph, now apparently reduced to half of its original width. The town of Cleator Moor and the fells of the Lake District are visible in the background. (Photograph : Alan O'Connor)





Plate 3

Station Yard, Moor Row, Cleator Moor, Cumbria

Looking east along the main railway line with the Station Yard to the left of the photograph. The photograph dates to 1969 and the Station House on the southern platform appears to be disused by this date. Beyond the tall LNWR signal box, Flat Fell and Long Barrow above Ennerdale mark the beginning of the Lake District fells. (Photograph : Alan O'Connor)





Plate 9

Station Yard, Moor Row, Cleator Moor, Cumbria

Looking east along the line of the main railway tracks, now the Cumbria cycle Way, towards the road bridge at the western edge of Moor Row Junction. The edge of the northern Station platform is visible on the left of the photograph, continuing below the bridge. (Photograph : P. Cracknell)



Plate 10

Station Yard, Moor Row, Cleator Moor, Cumbria

Looking west along the course of the main railway tracks, now the Cumbria cycle Way, towards the road bridge. The edge of the northern Station platform is visible on the right of the photograph, continuing beyond the bridge. (Photograph : P. Cracknell)





Plate 11

Station Yard, Moor Row, Cleator Moor, Cumbria

Looking east from the road bridge. The northern Station platform is visible on the left, with the southern platform probably hidden below the bank to the right of the Cycle Way, which was also the site of the Station House, shown in Plate 3.

(Photograph : P. Cracknell)



Plate 12

Station Yard, Moor Row, Cleator Moor, Cumbria

The road bridge at the western edge of Moor Row Junction, which was built between 1865 and 1899 across the railway tracks. (Photograph : P. Cracknell)





Plate 13  
 Station Yard, Moor Row, Cleator Moor, Cumbria  
 General view of the site from the west taken from just to the north of the road bridge.  
 (Photograph : P. Cracknell)



Plate 14  
 Station Yard, Moor Row, Cleator Moor, Cumbria  
 The field (Area B on Figure 3), which will provide access to the site.  
 (Photograph : P. Cracknell)





Plate 15

Station Yard, Moor Row, Cleator Moor, Cumbria

The field (Area C on Figure 3), which forms a large part of the proposed development on the northern side of the Moor Row Junction site. (Photograph : P. Cracknell)



Plate 16

Station Yard, Moor Row, Cleator Moor, Cumbria

General view across the site from the west. (Photograph : P. Cracknell)





Plate 17

Station Yard, Moor Row, Cleator Moor, Cumbria

General view across the site at November 2008, showing the tarmacked road and platforms of the demolished modern buildings shown in Plate 1.

(Photograph : P. Cracknell)