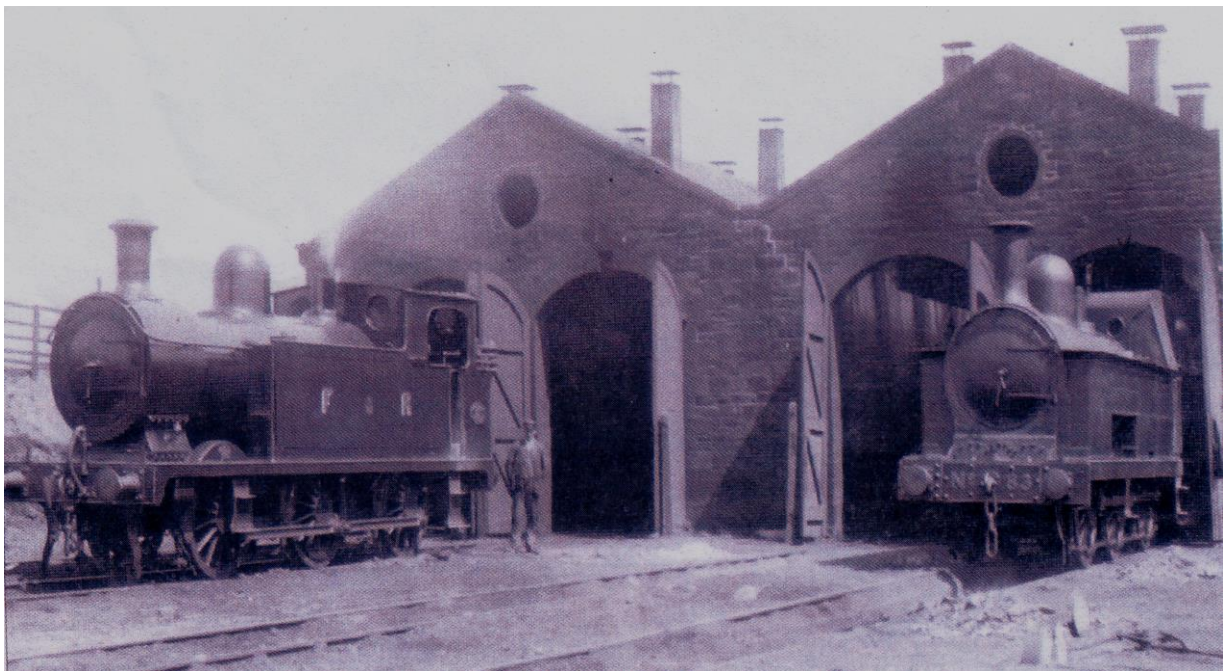


---

THE REPORT ON AN ARCHAEOLOGICAL  
DESK-BASED ASSESSMENT AT  
STATION YARD, MOOR ROW,  
CLEATOR MOOR, CUMBRIA

NGR NY 0065 1460

---



Prepared for Nigel Kay Homes Limited  
November 2022  
Document No. HBSAI 02/22

---

REPORT ON AN ARCHAEOLOGICAL  
DESK-BASED ASSESSMENT AT  
STATION YARD, MOOR ROW,  
CLEATOR MOOR, CUMBRIA

---

Philip Cracknell, BA ACIfA  
Historic Building Survey and  
Archaeological Illustration (HBSAI)

3, Cherry Tree Hill,  
Greysouthern,  
Cockermouth,  
Cumbria. CA13 0UN  
Tel: 01900 821004  
Mobile: 07926 870264

Cover Photograph: The Engine Shed in the Station Yard at Moor Row Junction  
photographed in c. 1920. The two small tank engines were  
operated by the Furness Railway Company.  
(Photograph : P. Cracknell)

---

# CONTENTS

---

		Page
1.	Introduction	1
2.	Site Location	2
3.	Aims and Methodology	3
4.	The Historical Background	4
5.	Results of the Assessment	4
6.	Conclusions	9
7.	Bibliography	10

---

## LIST OF FIGURES

---

- |           |  |
|-----------|--|
| Figure 1. | Site Location                                  |
| Figure 2. | Site Location                                  |
| Figure 3. | Site Plan                                      |
| Figure 4. | The Hodskinson and Donald map of 1774          |
| Figure 5. | The First Edition Ordnance Survey map of 1865  |
| Figure 6. | The Second Edition Ordnance Survey map of 1899 |
| Figure 7. | The Third Edition Ordnance Survey map of 1925  |

---

## LIST OF PLATES

---

- Plate 1. Aerial photograph Moor Row Station Yard
- Plate 2. Aerial photograph of the village of Moor Row
- Plate 3. A photograph of Moor Row Station in 1969
- Plate 4. A photograph of Moor Row Station in 1973
- Plate 5. A photograph of Moor Row Station in 1938
- Plate 6. A photograph of Moor Row Station in 1954
- Plate 7. A photograph of 1854 showing the iron foot bridge and the road bridge at the western end of the station platforms
- Plate 8. A photograph of c. 1920 showing the Locomotive Engine Sheds in the Station Yard
- Plate 9. The course of the main railway line from the east
- Plate 10. The course of the main railway line from the west
- Plate 11. The course of the main railway line from the east
- Plate 12. The road bridge at the western end of Moor Row Junction
- Plate 13. General view of the site from the west
- Plate 14. The field (Area B) on the northern side of the site
- Plate 15. The field (Area C) on the northern side of the site
- Plate 16. General view of the site from the west
- Plate 17. General view across the site from the north

---

## SUMMARY

---

*The Archaeological DBA has been prepared as part of an outline planning application for a residential development at Station Yard, Moor Row near Cleator Moor Cumbria (Centred on NGR NY 0065 1460). The assessment was completed in November 2022 prior to any development at the site. The southern half of the site originally formed the railway sidings at Moor Row junction with the line of the LNW and Furness Joint Railway, Whitehaven, Cleator and Egremont Branch marking its southern boundary. The northern half of the site, beyond an east/west aligned embankment that forms the northern boundary of the Station Yard, is presently rough pasture. In total, the proposed redevelopment covers an area of c. 4.45 hectares. A considerable amount of quarrying for stone and mining for both iron ore and coal has taken place in this area of West Cumbria around Cleator Moor and Moor Row during the eighteenth and nineteenth centuries and the location and extent of this industrial activity needed to be defined in order to assess the archaeological potential for any surviving archaeology within the boundaries of the present site. There are a number of sites which are listed on the County HER in the vicinity of the proposed development at Moor Row Station Yard. In particular, the large Engine Shed, which was originally located towards the eastern end of the Station Yard and dated to the mid-nineteenth century is listed on the County HER (SMR Reference No. 14804). The remaining sites on the County HER are all concerned with either the industrial mining activity, mainly of iron ore, that was carried out during the nineteenth and early twentieth centuries around Cleator Moor or the development and expansion of the railway system during the nineteenth century. Prior to the date of the site survey a number of modern buildings occupied the site of the Station Yard, but had all been demolished before October 2008. All of the buildings, including the Engine Shed, associated with the railway sidings had been demolished by c. 1973. The town of Cleator Moor and the village of Moor Row were only developed from the middle of the nineteenth century, both linked to the mining of coal or iron ore and the flax industries of the area. At the beginning of the nineteenth century this was an area of open moorland, with only the odd isolated farmstead. The results of the present Assessment Report would suggest that there were no medieval or early post-medieval settlements within the area of the proposed development site at Moor Row Station Yard. As a result, the archaeological potential for the site would appear to be limited and possibly non-existent.*