

IAIN TAVENDALE F.Arbor.A.

ARBORICULTURAL CONSULTANT

CHANGE OF USE OF LAND FROM WOODLAND FOR SITE TO PROVIDE EIGHT MOTORHOME BAYS, EIGHT SELF CONTAINED TIMBER BUILT HOLIDAY CABINS, SITE SHOP/OFFICE BUILDING, SHOWER/TOILET BLOCK, BIN STORE WITH INTERNAL ACCESS ROAD (RESUBMISSION OF WITHDRAWN APPLICATION 4/21/2252/0F1) LAND ADJACENT TO PARTFIELD HOUSE, DRIGG

ARBORICULTURAL METHOD **STATEMENT.**

METHOD STATEMENT FOR PROTECTION OF RETAINED TREES / HEDGES DURING DEVELOPMENT.

Project Arboriculturalist: Iain Tavendale F.Arbor.A.

High Bank Farm, Stoney Bank Road, Earby, Barnoldswick, Lancashire, BB18 6LD
Telephone Mobile: 07836 246062
Email: iaintavendale.co.uk

ABOUT THE METHOD STATEMENT

This method statement has been prepared to ensure that any trees / hedges indicated for retention are properly protected throughout the development of the site, and continue to represent a visual amenity in the future. It is intended to instruct Developers on methods which will help to avoid damage to the trees.

The method statement recommends all development within influencing distance of trees is to BS5837:2012 Trees in Relation to Design, Demolition and Construction – Recommendations.

This statement should be read in conjunction with the submitted tree survey report and it would be expected that all persons involved with it shall have a good working knowledge of the site and its history.

GUIDELINES FOR FILLING IN THE METHOD STATEMENT

The method statement identifies: the order in which works are undertaken and the roles of various people involved; the contacts and others responsible for protection of trees; relevant plans and approvals; detailed methods of tree protection and details for monitoring site supervision.

The following information is submitted with this Statement or has been submitted as part of the application bundle:

- Site layout drawing
- Details of tree retention/ removal & management / Tree Survey
- Arboricultural Impact Assessment
- Tree Protection Plan.
- Indicative sign to be attached to protective fencing.
- Sheet for monitoring site supervision.
- Construction Management Plan.

This method statement has been prepared in respect of planning conditions attached to the grant of full planning permission. Failure to adhere to agreed methods for development may result in a Breach of Condition Notice being served.

2.

METHOD STATEMENT

The people listed below are those with a responsibility for tree protection on the site and from the Local Authority. The relevant people should be contacted in the event of a problem.

SITE NAME	Land adjacent to Partfield House, Drigg.
DEVELOPER	Mr C Usher.
ADDRESS	Partfield House Drigg Holmrook CA19 1XG
TELEPHONE NUMBER	07841 413859
APPLICATION NUMBER	4/21/2411/0F1
PLANNING CONDITION NUMBER	6

AGREEMENT TO PROTECT TREES

The Developer has agreed to undertake tree protection to the standard advised in the method statement.

PROTECTED AREA

The trees are protected within fencing erected as identified in the attached plans. To avoid damage, **the following points MUST apply within the protected area:**

1. No material should be stored.
2. No cement, diesel or oil should be stored.
3. No vehicles should pass or be parked.
4. No ropes, cables, services or notice boards should be fixed to existing trees.
5. No levels should be changed.
6. No fires should be started with 5m of the protected area.
7. No services should be laid without prior approval and proper supervision.

Condition 6 states;

6. Prior to commencement of development, an Arboricultural Method Statement must be submitted to and approved in writing by the Local Planning Authority. The Arboricultural Method Statement must include, but is not limited to:

- i) Facilitation tree works;
- ii) Installation of temporary ground protection;
- iii) Installation of tree protection barriers;
- iv) Excavations, level changes and the requirement for specialised trenchless techniques for the installation of services;
- v) Installation of access roads – materials and design;
- vi) Installation of specialist foundations;
- vii) Preparatory works for new landscaping;

- viii) Auditable/audited system of arboricultural site monitoring, including a schedule of specific site events requiring input or supervision.

The approved Arboricultural Method Statement must be implemented in its agreed form unless the Local Planning Authority gives written approval to any variation.

Reason

To ensure that existing trees are protected in accordance with Policy DM28 of the Copeland Local Plan 2013-2028.

Construction Notes:

- These notes are to be read in conjunction with the Construction Management Plan prepared by the Holdsworth Design Practice Ltd.
 - All deliveries will be directly into the site from the highway and off loaded onto areas defined as permeable hard standings.
 - All buildings are sectional, supplied flat packed and can be manually carried to each individual location.
 - The buildings will be constructed on a frame supported by a series of stainless steel screw piles.
 - The piles can either be installed manually utilising a small hydraulic pump driving a manually supported power head or, by mini excavator.
 - Mini excavators are considered acceptable for operating within root protection areas subject to existing ground conditions as confirmed in Arboricultural Association Guidance Note 12, The Use of Cellular Confinement Systems Near Trees: A Guide to Good Practice Section 2.2 where it advises;
32. The ground pressure exerted by tracked excavators and loaded tracked dumpers (≤ 6 -tonne) of all sizes is generally low enough to avoid soil compaction (provided the soil is not saturated), and so they are often the most suitable machines to use when installing cellular confinement systems in root protection areas. However, tracked vehicles are not always appropriate because although they exert lower ground pressures, their skid steering can cause surface smearing which reduces gas permeability and water infiltration rates and thus causes harm to the living soil. Therefore, if a tracked vehicle needs to turn it is advised that thick plywood boards or plastic ground guards/metal sheeting are put down so that the vehicle can turn on top of them. Ground protection is more difficult to achieve when larger vehicles are employed and so they should track outside the tree's root protection area before turning.
- If mini excavators are required, ground conditions will be fully assessed and if necessary Ground Mats will be utilised or guidance as per BS5837:2012 Trees in relation to design, demolition and construction - Recommendations Section 6.2.3.3;

6.2.3.3 New temporary ground protection should be capable of supporting any traffic entering or using the site without being distorted or causing compaction of underlying soil.

NOTE The ground protection might comprise one of the following:

- a) for pedestrian movements only, a single thickness of scaffold boards placed either on top of a driven scaffold frame, so as to form a suspended walkway, or on top of a compression-resistant layer (e.g. 100 mm depth of woodchip), laid onto a geotextile membrane;*
- b) for pedestrian-operated plant up to a gross weight of 2 t, proprietary, inter-linked ground protection boards placed on top of a compression-resistant layer (e.g. 150 mm depth of woodchip), laid onto a geotextile membrane;*
- c) for wheeled or tracked construction traffic exceeding 2 t gross weight, an alternative system (e.g. proprietary systems or pre-cast reinforced concrete slabs) to an engineering specification designed in conjunction with arboricultural advice, to accommodate the likely loading to which it will be subjected.*

- Raised walkways will be constructed either on stainless steel screw or driven piles or posts in manually excavated holes lined with Visqueen and backfilled with postcrete.
- Ground protection (Mats or boards) will be provided around each cabin during construction to both avoid undue ground disturbance and provide a safe and clean working environment with stable surfaces for the erection of any ladders or temporary staging / scaffolding.
- Construction may proceed in phases with relevant materials, ground protection and similar simply being moved to the required work stations.
- All services to individual cabins to be routed beneath the elevated walkways where they will be supported above ground on brackets affixed to the structure.
- The main services will be routed in via the main gateway / drive and delivered as necessary to the relevant elevated walkway.
- All surfacing within expected root protection areas will be formed in accordance with Arboricultural Association Guidance Note 12, The Use of Cellular Confinement Systems Near Trees: A Guide to Good Practice;



Figure 1: The basic approach to using cellular confinement systems for ground protection near trees [Image courtesy of Core LP].

- All surfacing within the site will be permeable all as submitted and confirmed within the Drainage Report.
- Tree protection fencing is indicated on the Tree Protection Plan. All such fencing is in accordance with BS 5837 and is supplied purely as guidance to operatives and such as delivery drivers. There is no requirement for any vehicle to enter the protected areas and it is simply for guidance / information.

3.

METHOD STATEMENT**ORDER OF WORKS**

	WORKS TO BE UNDERTAKEN	DATE APPROVED	ACTIONS BY
1	Method statement + formal appointment of Project Arboriculturalist if required, received and approved by Local Authority		Developer Local Authority Tree Officer.
2	Any tree surgery works as indicated in the tree survey and submitted plans all as approved by the Local Planning Authority to be implemented.		Tree Work Contractor, Project Arboriculturalist Local Authority Tree Officer
3	Tree Protection Fencing fencing to be erected as indicated – see Tree Protection Plan. Project Arboriculturalist to be present when erecting protection to trees.		Developer, Project Arboriculturalist Local Authority Tree Officer.
4	Trees Team LPA notified of completion of fencing, images provided for consideration.		Developer Project Arboriculturalist.
5	Tree Protection approved by Local Authority Tree Officer.		Local Authority Tree Officer
6	Site (Toolbox) meeting to go through Method Statement and ensure that all parties are fully conversant with all procedures and methodologies, clarify any queries and establish contacts.		Developer, Local Authority Tree Officer, Project Arboriculturalist
7	Construction commences.		Developer
8	Ground protection to be afforded as required, site manager to assess and to contact Project Arboriculturalist should there be any concerns.		Developer, Project Arboriculturalist
9	Tree Protection monitored on a weekly basis by Site Manager. Record sheet completed and any repairs / adjustments completed to full specification.		Developer
10	Project Arboriculturalist to inspect the site on an ad hoc basis but formally once every three months to meet with Site Manager and discuss any issues.		Developer / Project Arboriculturalist.

11	Written notification provided to Trees Team immediately after three monthly inspections together with any relevant photographs.		Project Arboriculturalist
12	Consultant or Local Authority Tree / Landscape Officer to be contacted immediately should any problems/complications arise. Work in vicinity of trees to cease until issues are resolved and agreed works confirmed to Local Planning Authority.		Project Arboriculturalist Local Authority Tree Officer Developer
13	If excavation within the protected rootzone is required for any purpose, works <u>may</u> be permitted subject to a suitable methodology being submitted and approved by the LPA.		Project Arboriculturalist Local Authority Tree Officer Developer
13	Services installed as and when required. Services should avoid all root protection areas		Project Arboriculturalist Local Authority Tree Officer Developer
14	When all works have been completed and machinery extracted from site and in accordance with Developers H&S requirements, Site Hoarding / Tree Protection to be removed.		Developer
15	Final site inspection.		Developer Local Authority Tree Officer, Project Arboriculturalist

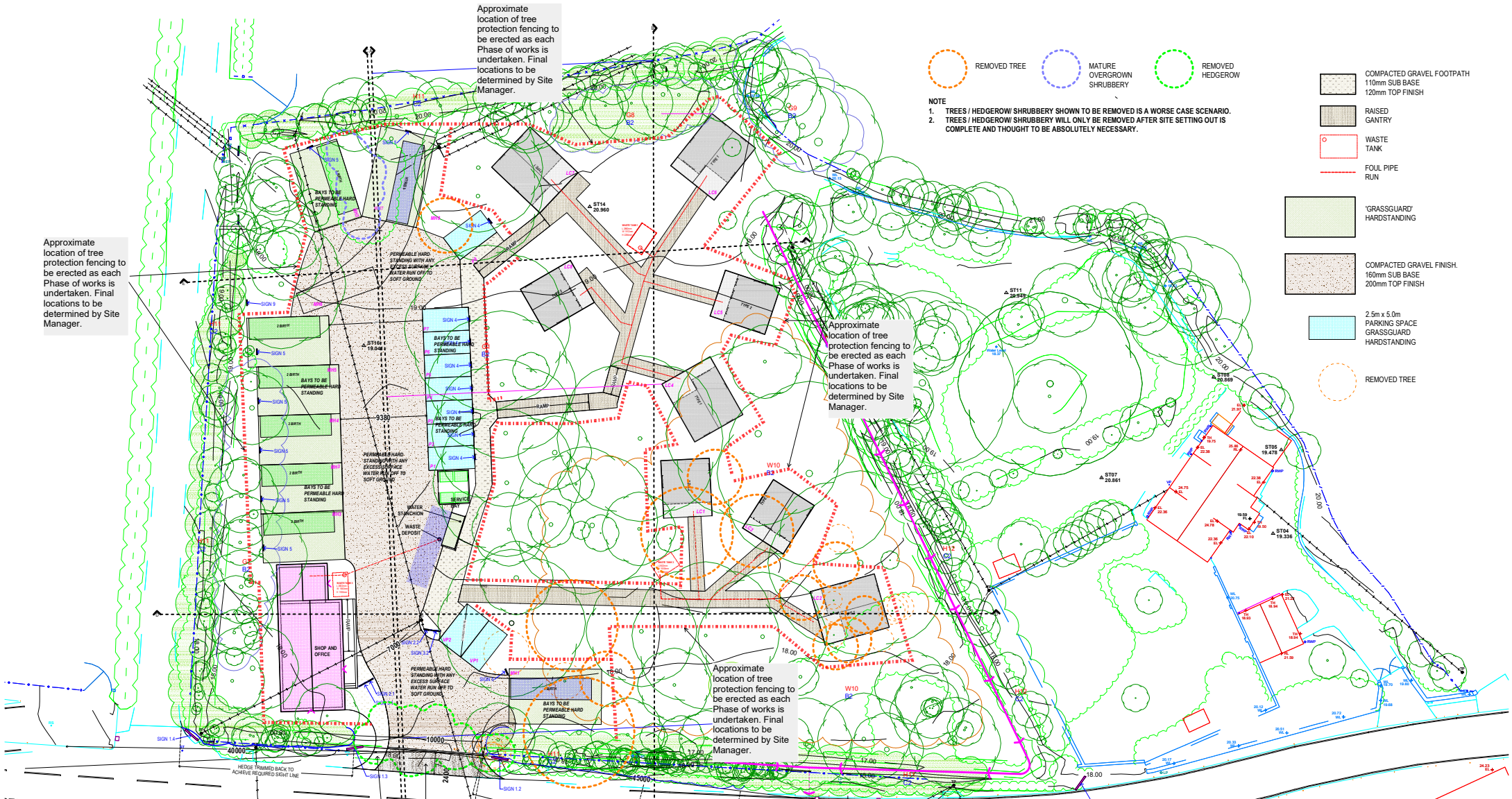
METHOD STATEMENT

CONTACTS

POSITION	NAME	ADDRESS	TELEPHONE NO.
Developer	Mr C Usher	Partfiled House, Drigg, Holmrook CA19 1XG	07841 413859
Site Manager	TBA		
Project Arboriculturalist	Iain Tavendale	High Bank Farm, Earby, Lancs BB18 6LD	01282 853333
Arboricultural Developer	TBA		
Local Authority Tree Officer	Trees Team	Copeland Borough Council	01946 598300

Development At: Partfield House, Drigg.

[illegible]



- NOTE
1. TREES / HEDGEROW / SHRUBBERY SHOWN TO BE REMOVED IS A WORSE CASE SCENARIO.
 2. TREES / HEDGEROW / SHRUBBERY WILL ONLY BE REMOVED AFTER SITE SETTING OUT IS COMPLETE AND THOUGHT TO BE ABSOLUTELY NECESSARY.

- COMPACTED GRAVEL FOOTPATH
110mm SUB BASE
120mm TOP FINISH
- RAISED GANTRY
- WASTE TANK
- FOUL PIPE RUN
- 'GRASSGUARD' HARDSTANDING
- COMPACTED GRAVEL FINISH.
160mm SUB BASE
200mm TOP FINISH
- 2.5m x 5.0m
PARKING SPACE
GRASSGUARD
HARDSTANDING
- REMOVED TREE

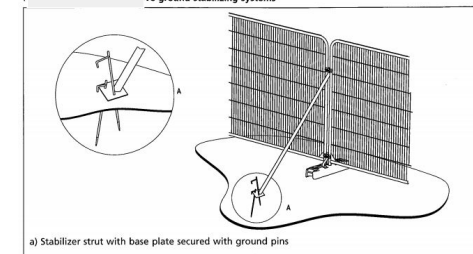
Approximate location of tree protection fencing to be erected as each Phase of works is undertaken. Final locations to be determined by Site Manager.

Approximate location of tree protection fencing to be erected as each Phase of works is undertaken. Final locations to be determined by Site Manager.

Approximate location of tree protection fencing to be erected as each Phase of works is undertaken. Final locations to be determined by Site Manager.

Approximate location of tree protection fencing to be erected as each Phase of works is undertaken. Final locations to be determined by Site Manager.

BS5837 Fencing Guidance.



Ground protection guidance - BS5837.

6.2.3.3 New temporary ground protection should be capable of supporting any traffic entering or using the site without being distorted or causing compaction of underlying soil.

NOTE: The ground protection might comprise one of the following:

- a) For pedestrian movements only, a single thickness of scaffold board placed either on top of a driven scaffold frame, or as to form a suspended walkway, or on top of a compression-resistant layer (e.g. 100 mm depth of woodchip), laid onto a geotextile membrane;
- b) For pedestrian-operated plant up to a gross weight of 2 t, proprietary, inter-locked ground protection board placed on top of a compression-resistant layer (e.g. 150 mm depth of woodchip), laid onto a geotextile membrane;
- c) For wheeled or tracked construction traffic exceeding 2 t gross weight, an alternative system (e.g. proprietary system or precast reinforced concrete slabs) to an engineering specification designed in conjunction with arboricultural advice, to accommodate the likely loading to which it will be subjected.

Tree Protection Plan

to be read in conjunction with
**Arboricultural Method
Statement & Construction
Management Plan.**

Iain Tavendale F.Arbor.A.

October 2024.

LIMITATIONS OF USE.

1. These drawings are only to be used for the 'drawing type' stated and as such are not suitable for any other use.
2. The drawings should not be scaled from for obtaining detailed dimensional information unless the dimension is stated on the drawings.
3. Discrepancies should be reported to HDP Ltd immediately.
4. Drawings and designs should not be reproduced unless direct agreement is sent from HDP Ltd.
5. The drawings and designs are the property of HDP Ltd.
6. The drawings are for the sole use of the client. A third party using these drawings does so at their own risk.

REVISONS.

03.11.21 rev1 - SIGHT LINES ALTERED TO SHOW 45m TO 500mm OF NEARSIDE KERB
17.12.21 rev2 - CABIN LAYOUT ALTERATION TO SOUTH OF SITE. CONSERVATION REQUEST.
12.01.22 rev3 - ENHANCED IDENTIFICATION OF TREE / HEDGEROW / SHRUBBERY TO BE REMOVED

Copyright © All Rights Reserved of
Holdsworth Design Practice Ltd
All drawings & designs are the copyright of
Holdsworth Design Practice Ltd.
They should not be copied, reproduced or duplicated without the prior
approval of Holdsworth Design Practice Ltd.



HDP Ltd
Owen Huan
17 The Willows
Huton, CA20 6JG
M: 07700531
E: ohen@hdp.co.uk
V: 01438 810000

PROPOSAL DRAWINGS

SITE PLAN.

Project GLAMPING AND MOTOHOME SITE
PARTFIELD PARK, DRIGG.

DRAWING TYPE		
PLANNING (PL)		
DRAWING NO.	SCALE	DRAWN BY
USDA CS	A1 1:200	AJH
022 PL-1		
REVA	DATE	CHKD BY
	31.01.22	AJH