

# LONSDALE TERRACE, ST BEES

## WINDOW ASSESSMENT: MAIN ELEVATION



HOUSES 1 AND 2



HOUSE 3



HOUSE 4



HOUSE 5



HOUSE 6



HOUSE 7



HOUSE 8



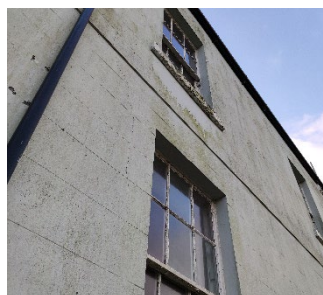
HOUSE 9



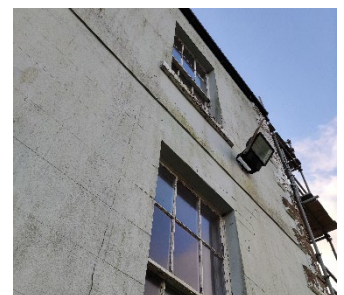
HOUSE 10



HOUSE 11



HOUSE 11 END WALL



HOUSE 11 END WALL

# LONSDALE TERRACE, ST BEES

## WINDOW ASSESSMENT: WINDOW TYPES



ALTERED LOWER SASH



10/10 HISTORIC BOX SASH



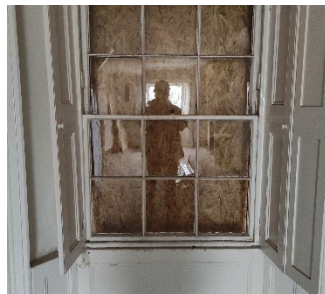
10/10 HISTORIC BOX SASH



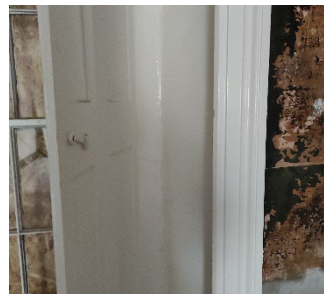
SHUTTERS TO 10/10 BOX SASH



10/10 HISTORIC BOX SASH  
(NO SHUTTERS)



6/6 HISTORIC BOX SASH  
WITH SHUTTERS



SHUTTERS TO HISTORIC 6/6  
BOX SASH



MODERN 6/6 SASH NO  
SHUTTERS



HISTORIC 8/8 BOX SASH



HISTORIC 8/8 BOX SASH (NO  
SHUTTERS)



EXT HISTORIC 8/8 BOX SASH



MODERN 8/8 BOX SASH NO  
SHUTTERS



# LONSDALE TERRACE, ST BEES

## WINDOW ASSESSMENT: EXTERNAL CONDITION



COVERED WINDOW



TOP OPENING MODERN  
TIMBER CASEMENT



MODERN 2/2 BOX SASH  
FRAME - DECAYED



HISTORIC FRAME – POOR  
CONDITION



HISTORIC 2/2 BOX SASH



MODERN TIMBER CASEMENT  
WINDOW



WINDOW OPENING TO BE  
RESTORED AS DOOR - EXT



WINDOW OPENING TO BE  
RESTORED AS DOOR – INT  
VIEW



MODERN TIMBER CASEMENT  
WINDOW



HISTORIC 1/1 BOX SASH (NO  
CORDS)



EXT HISTORIC 8/8 BOX SASH



HISTORIC SASH LOCK