

DISCHARGE LIMITED FROM SUDS AREA TO 15.5L/s AT 1 YEAR STORM, 31L/s AT 30 YEAR STORM AND 38L/s AT 100 YEAR STORM.

INFILTRATION TRENCH TO CATCH RUNOFF FROM NORTH OF THE SITE.

INFILTRATION TRENCH TO CATCH RUNOFF FROM NORTH OF THE SITE.

100mm ORIFICE PLATE.

100mm ORIFICE PLATE.

DISCHARGE LIMITED TO 2.2L/s AT 1 YEAR STORM, 4.3L/s AT 30 YEAR STORM AND 5.2L/s AT 100 YEAR STORM.

DISCHARGE LIMITED TO 1.2L/s AT 1 YEAR STORM, 2.2L/s AT 300 YEAR STORM AND 2.7L/s AT 100 YEAR STORM.

DISCHARGE LIMITED TO 5.8L/s AT 1 YEAR STORM, 11.1L/s AT 30 YEAR STORM AND 13.5L/s AT 100 YEAR STORM.

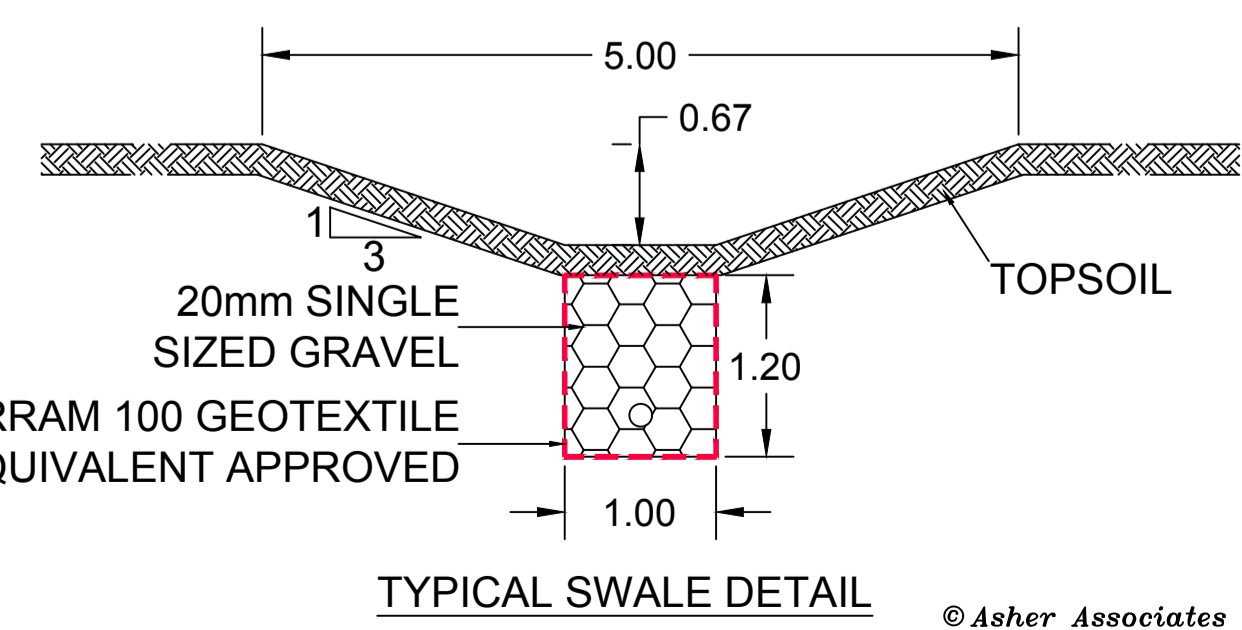
DISCHARGE LIMITED TO 2.8L/s AT 1 YEAR STORM, 5.4L/s AT 30 YEAR STORM AND 6.5L/s AT 100 YEAR STORM.

Surface water culvert discharging surface water beneath road to engineers specification

FLOOD ROUTE TO DRAIN DOWNHILL TO NEW MODIFIED EXCEEDANCE ROUTE.

EXISTING GROUND TO BE MODIFIED TO CREATE EXCEEDANCE FLOOD ROUTE TO DISCHARGE TO KIRKLAND ROAD.

FLOOD ROUTE TO DRAIN DOWN EXISTING TRACK



- NOTES.**
- DO NOT SCALE FROM THIS DRAWING.
 - ALL DIMENSIONS ARE IN METRES UNLESS OTHERWISE STATED.
 - ALL MATERIALS AND WORKMANSHIP ARE TO BE IN ACCORDANCE WITH "SEWERS FOR ADOPTION" (EIGHTH EDITION)
- KEY:**
- PROPOSED
 - SURFACE WATER SEWER
 - IMPROVED SWALE
 - FOUL SEWER
 - GROUND TO BE MODIFIED TO CREATE EXCEEDANCE FLOOD ROUTE
 - INFILTRATION TRENCH

NOTE: GULLIES TO CATCH ROAD WATER BEFORE DISCHARGING INTO THE SWALES TO PROVIDE THE REQUIRED LEVEL OF TREATMENT. SURFACE WATER PLOT DRAINAGE TO DISCHARGE INTO FILTER DRAIN BELOW SWALES.

Rev.	Amendment	By	Checked	Approved	Date
B	TYPICAL SWALE DETAIL ADDED. FLOOD ROUTING ADDED. KEY UPDATED. ORIFICE PLATE ADDED. FILTER TRENCHES AND SUDS AREA ADDED.	RJ	WAM	WAM	27/08
A	LAYOUT UPDATED AS PER ARCHITECTS DRAWING 1722-PL211 SITE PLAN AS PROPOSED SCHEME 2. EXISTING LAND DRAIN NOTE ADDED.	RJ	WAM	WAM	27/08

FOR INFORMATION

Status	Appd.	Date
--------	-------	------

Client: **GENESIS HOMES Ltd**

Project: **PROPOSED HOUSING DEVELOPMENT, KIRKLAND ROAD, ENNERDALE BRIDGE.**

Title: **DRAINAGE LAYOUT**

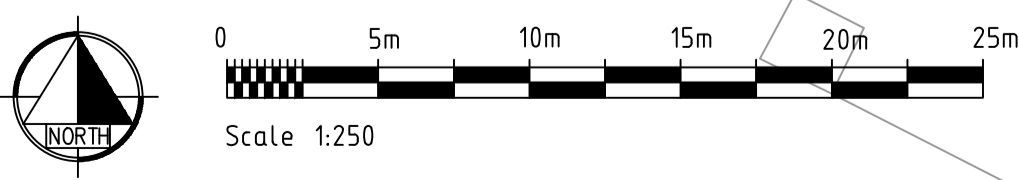
Drawn	Date	Checked	Date	Approved	Date
RJ	10.08.20	WAM	10.08.20	WAM	10.08.20

Scales: **1:250 @ A1**

Job No.: **AA6874**

Client Drawing No.: **AA6874/EW/02**

Rev.: **B**



Pasture Gate

Banlaside

1.8m wide tarmac footpath link

109.7m

1.8m wide tarmac footpath link

