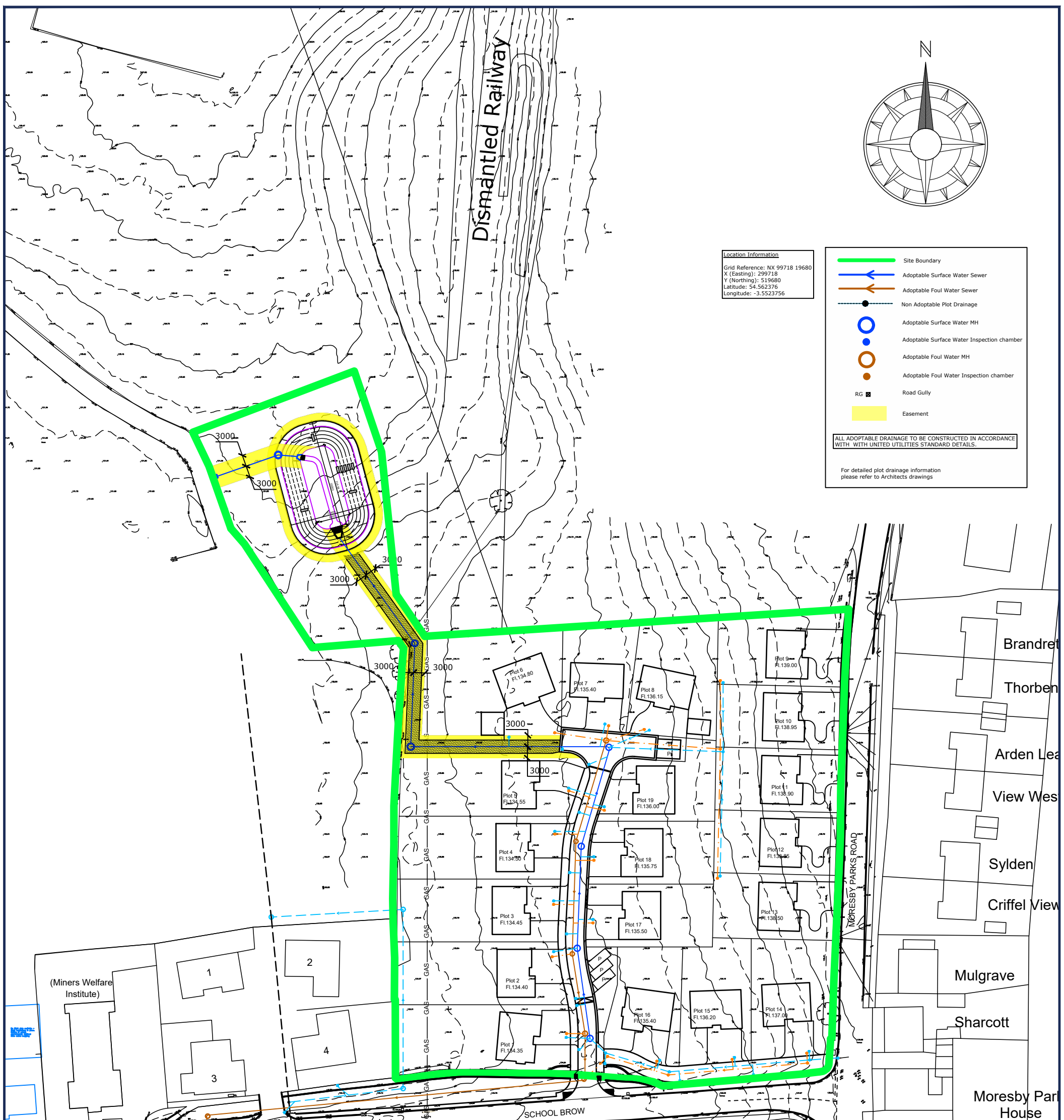


Location Information
 Grid Reference: NX 99718 19680
 X (Easting): 299718
 Y (Northing): 519680
 Latitude: 54.552376
 Longitude: -3.5523756

— Site Boundary
— Adoptable Surface Water Sewer
— Adoptable Foul Water Sewer
— Non Adoptable Plot Drainage
○ Adoptable Surface Water MH
● Adoptable Surface Water Inspection chamber
○ Adoptable Foul Water MH
● Adoptable Foul Water Inspection chamber
■ RG Road Gully
 Easement

ALL ADOPTABLE DRAINAGE TO BE CONSTRUCTED IN ACCORDANCE WITH UNITED UTILITIES STANDARD DETAILS.

For detailed plot drainage information please refer to Architects drawings



Revisions		
A	16.09.21	Northern site boundary altered. (RB)
B	16.03.22	Site Layout amended. (RB)
C	23.06.22	Easement adjusted
D	05.09.22	Existing footpath retained & Tactile paving added at site entrance. (AC)

PRELIMINARY

Suitability --

Project: Residential Development at School Brow, Moresby Parks

Client: Raemore Developments Limited

Drawing: A3 Land Registry Plan

Project no	Drawing no	Date	Drawn by	Rev	Scale	Sheet
6972	205	JUN 21	SJ	D	1:750	A3

TWEDDELL & SLATER CONSULTING CIVIL & STRUCTURAL ENGINEERS	Tweddell & Slater Ltd Unit 2, Mereside Eden Business Park Penrith, Cumbria, CA11 9FB Tel 01768 865400 Email mail@tsceltd.com Web www.tsceltd.com	Tweddell & Slater North East Ltd 20 Market Place Richmond North Yorkshire, DL10 4QG Tel 01748 503162
---	---	---