

Locogen Ltd, 4 West Silvermills Lane, Edinburgh, EH3 5BD  
 Tel: +44 (0) 131 555 4745; Email: info@locogen.com  
 Company Number: SC370060; VAT Number: 983383677

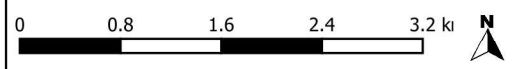
- Legend**
- ▲ Proposed turbine location
  - Distance from site
    - 1km
    - 5km
    - 10km
  - Cumulative (10km) - approved and operational turbines
    - Single turbine (1)
    - Single turbine (2)
    - Single turbine (3)
    - Single turbine (4)
  - Wind turbine visibility (excluding proposed development)
    - 1 turbine visible
    - 2 turbines visible
    - 3 turbines visible
    - 4 turbines visible

**Proposed development description:**

- Number of turbines: 1
- Turbine model: EWT DW61
- Proposed hub height: 46m
- Proposed tip height: 76m

This map presents a Zone of Theoretical Visibility ('ZTV') to tip height for all known operational turbines within 10km, exceeding 100kW.

This ZTV is based on a receptor viewing height of 1.6m AGL and a grid spacing of 2m (Source: LIDAR).



A3 Horizontal Scale 1:60,000

CRS: British National Grid (EPSG:27700)

Produced: Amy Crum  
 Reviewed: Amy Talbot  
 Approved: Amy Talbot

Date: 04/12/23 Revision: 3.0

8337-DRW-PLN-0004-Cumulative ZTV-v3.0

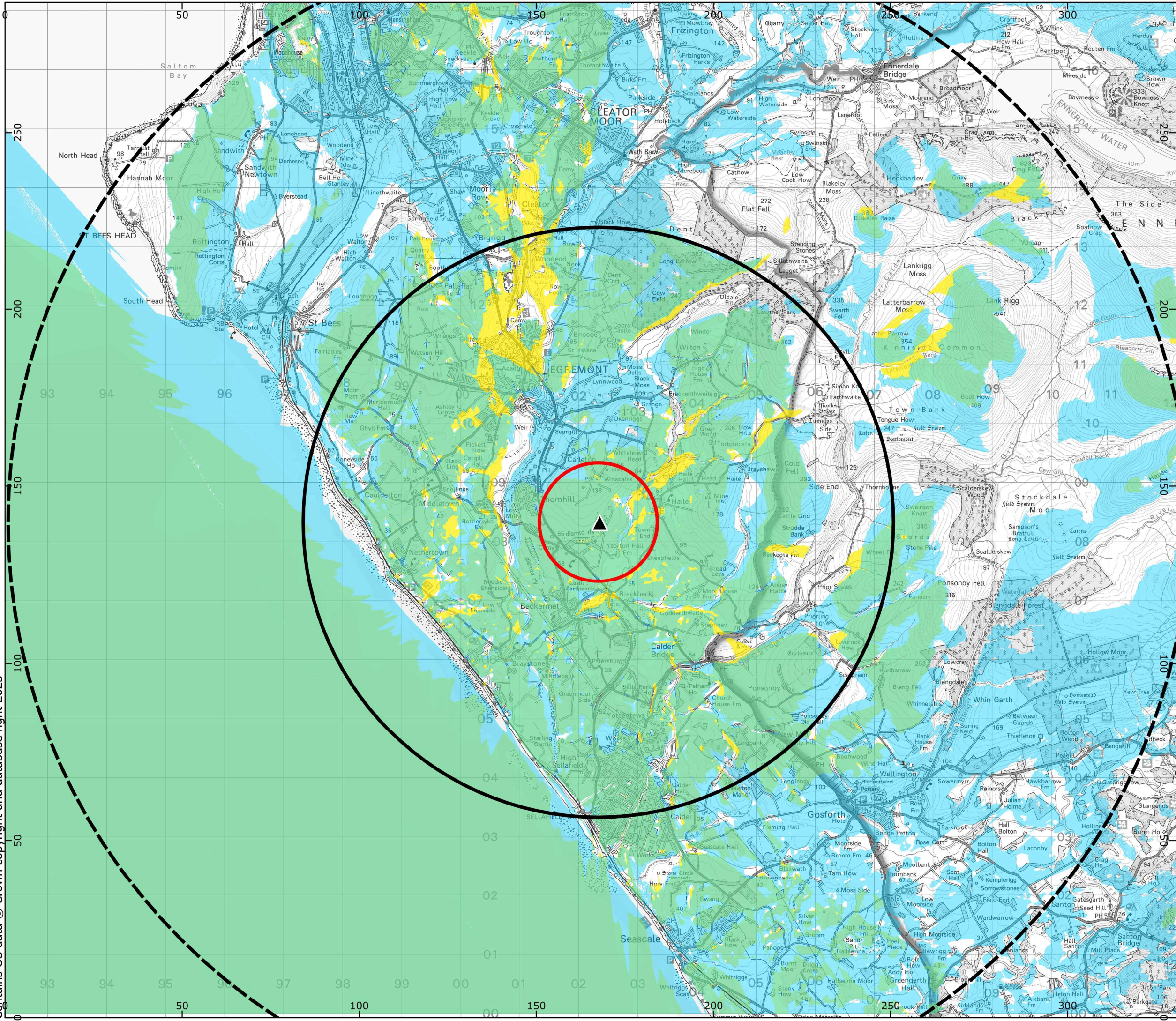
ZTV-005

Locogen Ltd

Contains OS data © Crown copyright and database right 2023



Contains OS data © Crown copyright and database right 2023



Locogen Ltd, 4 West Silvermills Lane, Edinburgh, EH3 5BD  
 Tel: +44 (0) 131 555 4745; Email: info@locogen.com  
 Company Number: SC370060; VAT Number: 983383677

- Legend**
- ▲ Proposed turbine location
  - Distance from site
    - 1km
    - 5km
    - 10km
  - Turbine visibility
    - Operational turbine(s) visible (excluding proposed development)
    - Proposed turbine visible only
    - Both Proposed and existing turbine(s) visible

**Proposed development description:**

- Number of turbines: 1
- Turbine model: EWT DW61
- Proposed hub height: 46m
- Proposed tip height: 76m

This map presents a Zone of Theoretical Visibility ('ZTV') to tip height for the proposed turbine model listed above, alongside existing operational turbines as listed in the previous map.

This ZTV is based on a receptor viewing height of 1.6m AGL and a grid spacing of 2m (source: LIDAR)



A3 Horizontal Scale 1:60,000

CRS: British National Grid (EPSG:27700)

Produced: Amy Crum  
 Reviewed: Amy Talbot  
 Approved: Amy Talbot

Date: 04/12/23 Revision: 3.0

8337-DRW-PLN-0004-Cumulative ZTV-v3.0

ZTV-006

Locogen Ltd