

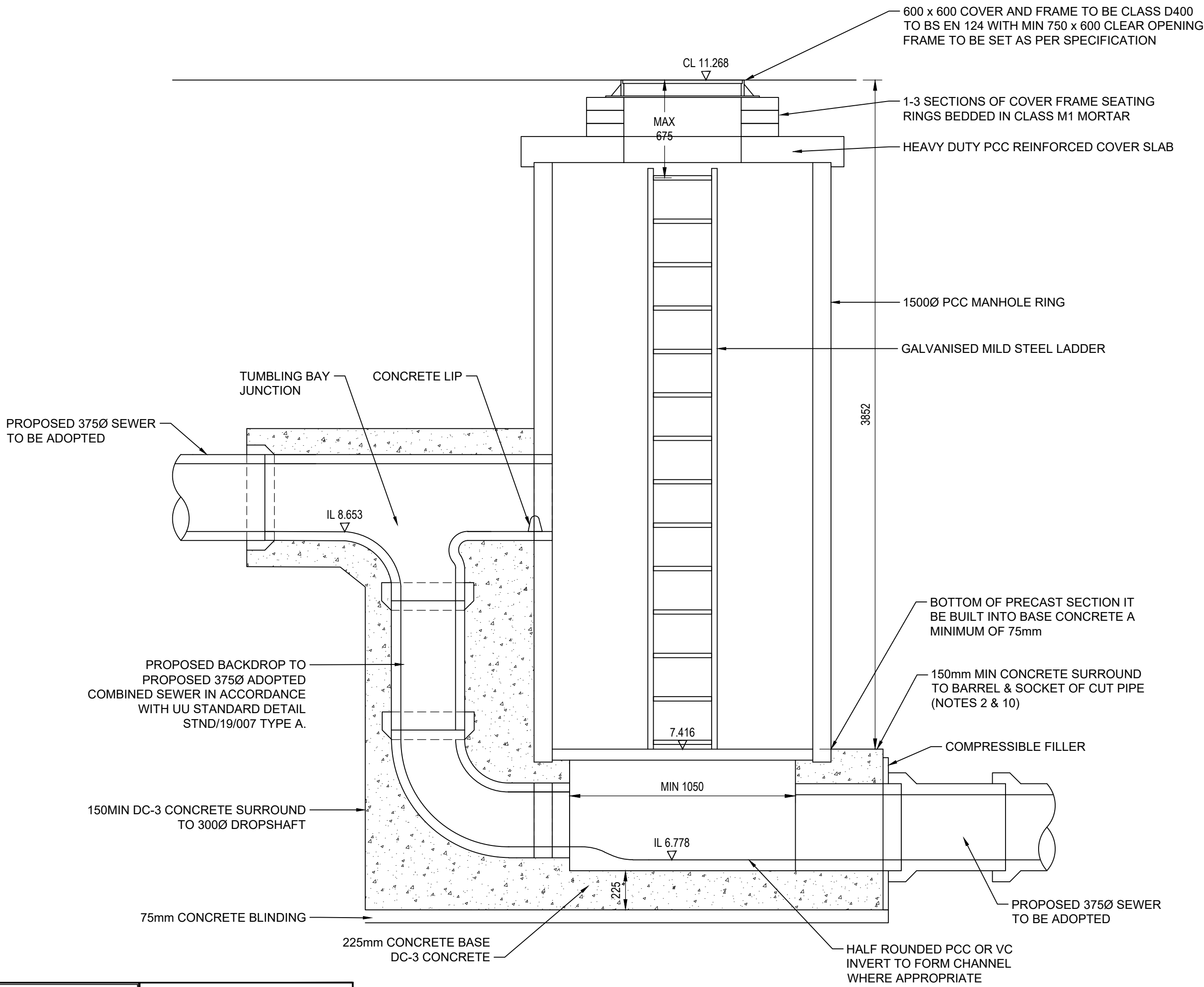
REV	DATE	DESCRIPTION	DRW	CHK
P01	28/06/2024	PRELIMINARY ISSUE	SNK	GS
P02	25/07/2024	REVISED TO UU COMMENTS	SNK	GS
C01	07/11/2024	TENDER ISSUE	SNK	GS
C02	12/02/2025	REVISED TO UU COMMENTS	SNK	GS
C03	17/03/2025	REVISED TO UU COMMENTS	MH	SNK
C04	24/04/2025	REVISED TO UU COMMENTS	SNK	MP
C05	01/05/2025	REVISED TO UU COMMENTS	SNK	MP

NOTES

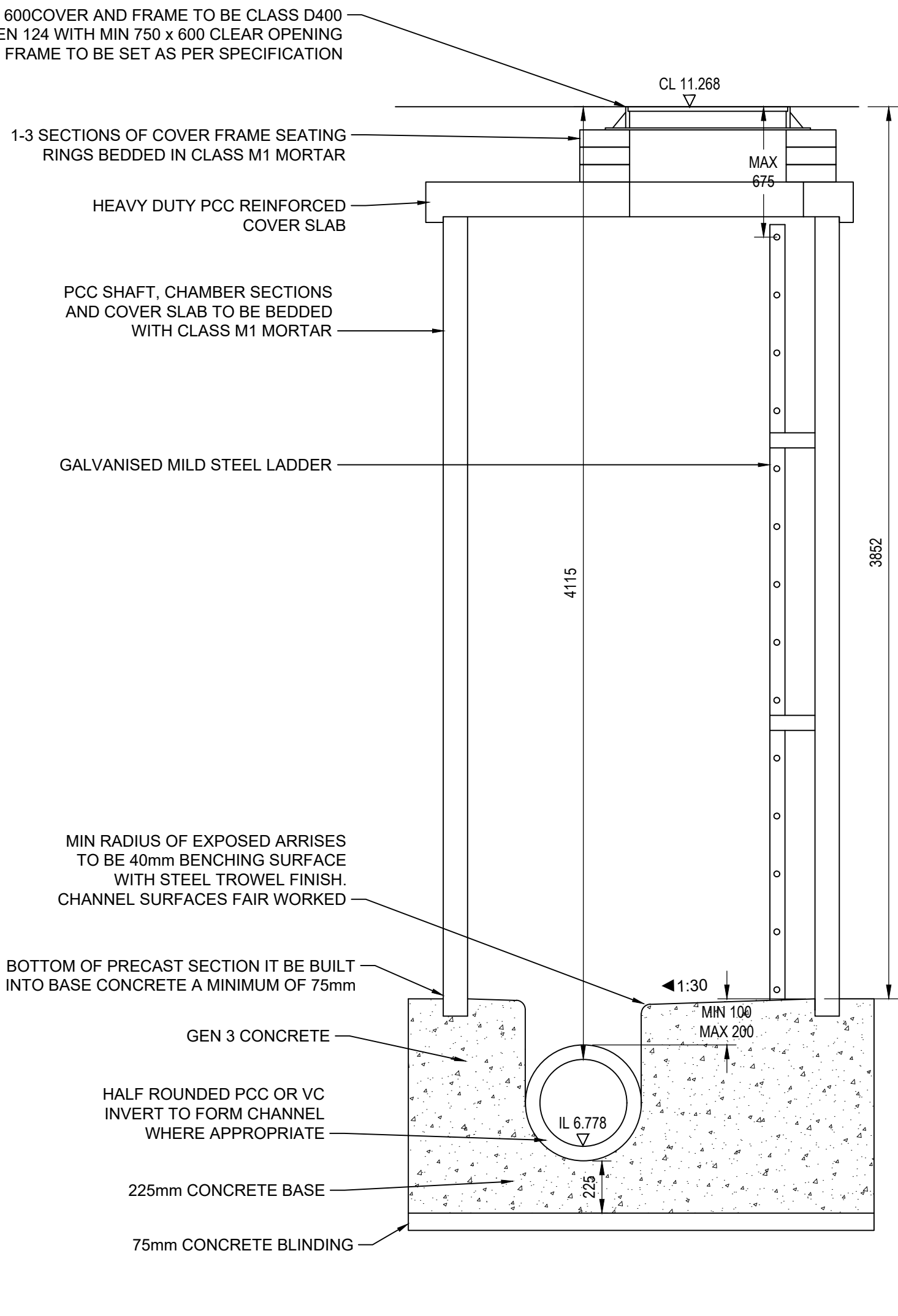
- ALL DIMENSIONS ARE IN MILLIMETRES
- CONCRETE BENCHING AND PIPE SURROUND**
SHALL BE PLACED IN SINGLE CONTINUOUS OPERATION FROM TOP OF BASE SLAB TO TOP OF BENCHING AND PIPE SURROUND
- CONNECTION INTO MANHOLES**
SHALL BE CONSTRUCTED WITH THE SOFFITS LEVEL UNLESS DETAILED DIFFERENTLY ON CONTRACT DRAWINGS
- METALWORK**
LADDERS, HANDRAILING AND SAFETY CHAIN SHALL BE AS SHOWN ON DEVELOPER SERVICES DETAIL 9 (STND/19/009)
- CONCRETE SURROUND TO MANHOLES**
A CONCRETE SURROUND IS NOT NORMALLY REQUIRED TO MANHOLES UNLESS INSTALLED IN AREAS OF UNSTABLE GROUND, UNDER CONDITIONS OF FLOTATION OR WHERE SUBJECTED TO EXCEPTIONAL OR ECCENTRIC LOADS. IN WHICH CASES A 150 SURROUND OF AT LEAST 20 N/mm CONCRETE SHALL BE PROVIDED. ANY JOINTS SHOULD BE STAGGERED WITH PRECAST CONCRETE JOINTS
- MINIMUM LENGTH OF CHANNEL (X Min)**

CHAMBER DIA	"X" MIN
1050	800
1200	950
1350	1000
1500	1050
1800	1150
2100	1300
2400	1450
2700	1550
3000	1700

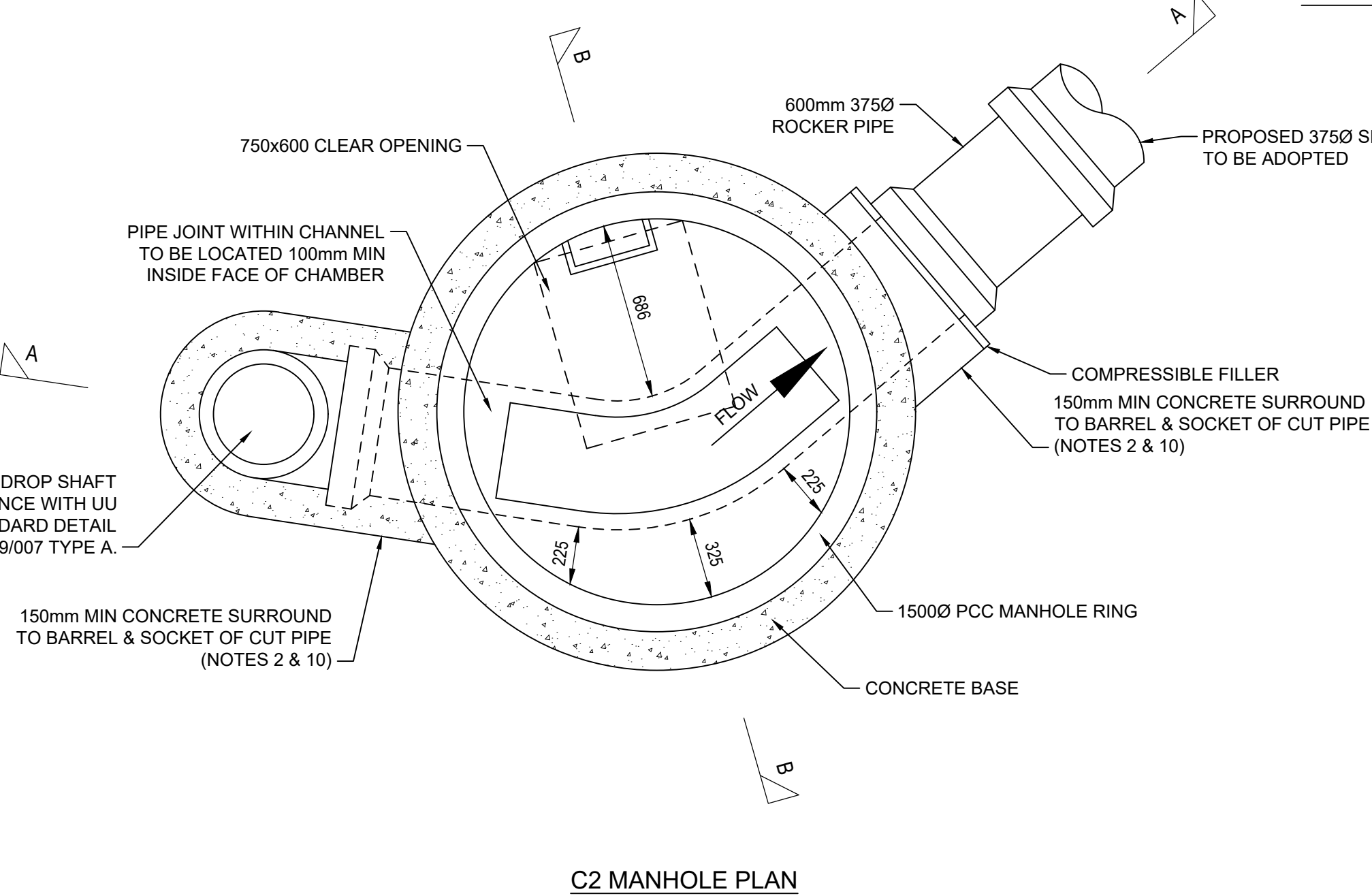
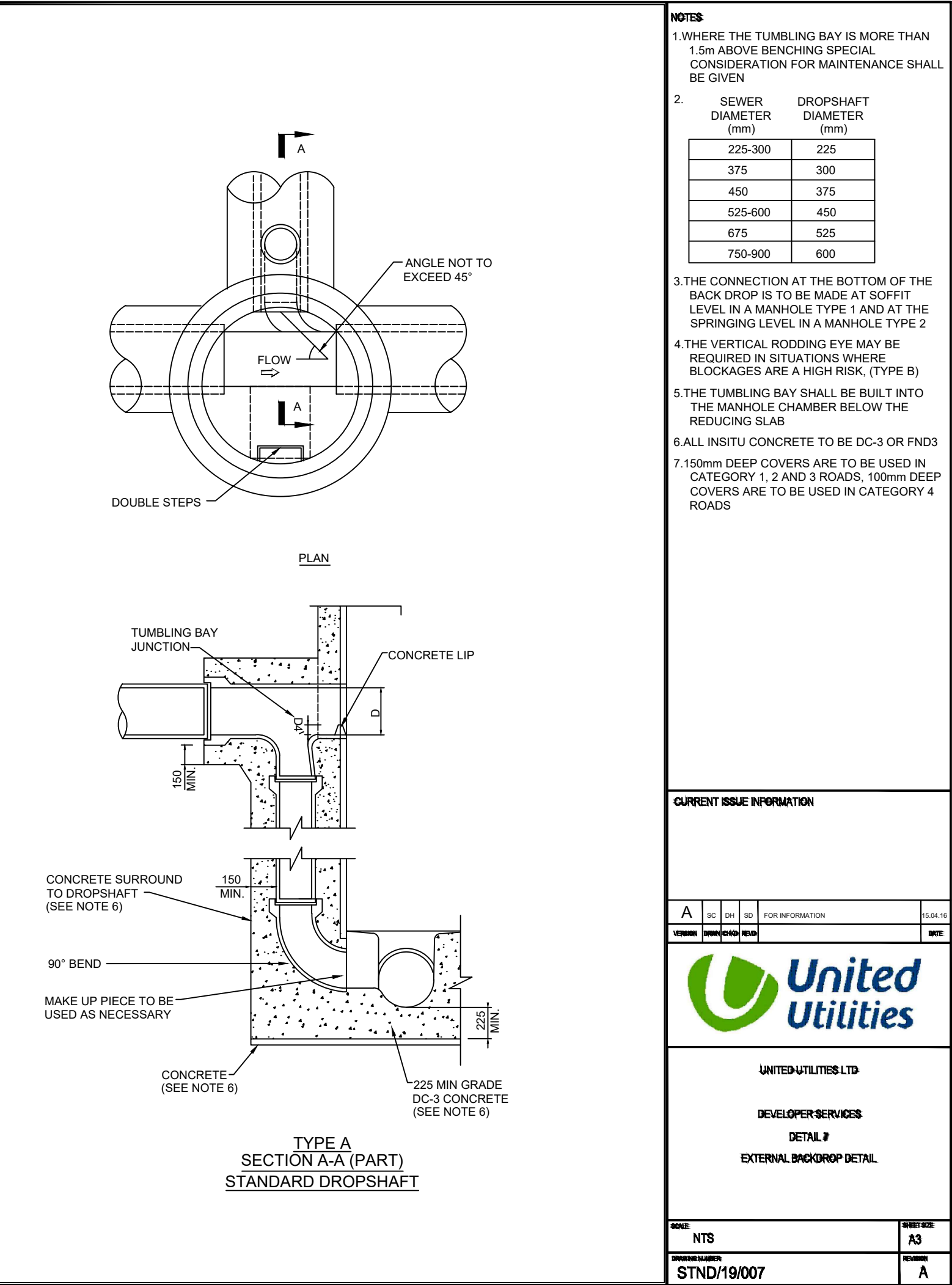
- CUT ENDS OF REINFORCED CONCRETE PIPES**
SHALL BE TREATED WITH EPOXY RESIN PAINT/MORTAR
- MANHOLE ACCESSES FOR MANHOLE ACCESS**
OPTIONS AND DETAILS SEE DEVELOPER SERVICES DETAIL 10 (STND/19/010)
DOUBLE STEPS SHALL BE PLASTIC ENCAPSULATED CARBON STEEL TO BS EN 1247-2. DOUBLE STEPS SHALL NOT BE USED WHERE COVER-TO-SOFFIT DIMENSION IS >3.0m
- COVER AND FRAME**
150 DEEP COVERS ARE TO BE USED IN CATEGORY 1, 2, 3 ROADS. 100 DEEP COVERS ARE TO BE USED IN CATEGORY 4 ROADS. DOUBLE TRIANGULAR COVERS ARE TO BE USED IN CARRIAGEWAY, ROAD CATEGORY TO BE DESIGNATED BY THE HIGHWAY AUTHORITY. FRAME TO BE SET AS PER SPECIFICATION
- CONCRETE**
ALL IN-SITU CONCRETE TO BE DC-3 OR FND3
- VARIABLE FEATURES (V.F.)**
WHERE V.F. APPEARS IN ANNOTATION REFER TO VARIABLE FEATURES AS SHOWN ON DEVELOPER SERVICES DETAIL 10 (STND/19/010)



C2 MANHOLE SECTION A-A
MANHOLE TYPE 1



C2 MANHOLE SECTION B-B
MANHOLE TYPE 1



C2 MANHOLE PLAN

HEALTH & SAFETY

- CONTRACTOR SHOULD BE AWARE OF GENERAL CONSTRUCTION RISKS TO PREVENT SLIPS, TRIPS AND FALLS AND TAKE NECESSARY PRECAUTIONS WITHOUT SPECIAL INSTRUCTION.
- CONTRACTOR TO PROVIDE TRENCH SUPPORTS AS APPROPRIATE AND ENSURE THAT PLANT REMAINS A SAFE DISTANCE FROM TRENCHES PRIOR TO INSTALLING DRAINAGE
- THE TIME THAT EXCAVATIONS ARE OPEN ON SITE SHOULD BE KEPT TO A MINIMUM AND ALL TRENCHES SHOULD BE SURROUNDED BY A BARRIER.
- CONNECTIONS TO EXISTING SEWERS TO BE MADE BY SW APPROVED CONTRACTOR ONLY.
- CONTRACTOR TO MAKE OPERATIVES AWARE OF ASSOCIATED DANGERS TO HEALTH SUCH AS LEPTOSPIROSIS (WELLS DISEASE) AND RECOMMENDED PRECAUTIONS, ADEQUATE WELFARE FACILITIES AND PROTECTIVE CLOTHING TO BE PROVIDED AS REQUIRED.
- UNFINISHED MANHOLES MUST BE COVERED WITH LOAD BEARING MATERIALS AND SURROUNDED WITH BARRIER.
- PIPES & CABLES
- SERVICE RECORDS TO BE REFERRED TO PRIOR TO WORK COMMENCING. CONTRACTOR TO PROCEED WITH CAUTION AND SERVICES TO BE LOCATED BY HAND DIG AND PROTECTED ACCORDINGLY.
- EXCAVATION/FILL
- CONTRACTOR TO ENSURE RELEVANT MEASURES ARE TAKEN TO KEEP PLANT AND PEOPLE A SAFE DISTANCE FROM STEEP SLOPES DURING THE WORKS.
- CONTRACTOR TO ENSURE THAT PROCEDURES ARE IN PLACE TO KEEP PEOPLE A SAFE DISTANCE FROM WORKING PLANT WHERE NECESSARY.
- CONTRACTOR TO REFER TO GROUND INVESTIGATION REPORT FOR CONTAMINATION TESTS AND TO PROVIDE ADEQUATE WELFARE FACILITIES AND PROTECTIVE CLOTHING AS REQUIRED.

SUBJECT TO THE APPROVAL OF
ALL RELEVANT AUTHORITIES

SUBJECT TO THE APPROVAL OF
ALL RELEVANT AUTHORITIES

Client
Aldi Stores Ltd.

Project Title
Aldi - Whitehaven

Project Address
**Preston Street
Whitehaven**

Drawing Title
Proposed Manhole C2 Details

Job No.	Originator	Zone	Level	Type	Role
79-EXXX 3E		ZZ	XX	DR	C

System Classification	Drawing No.	Suitability	Revision
Ro. 50_20_11 -6005		D2	C05

Drawn	Checked	Date	Scale	Size
SNK	GS	Jun 2024	1:20	A1

Newcastle Office
2 Esch Plaza, Sir Bobby Robson Way
Great Park, Newcastle upon Tyne
NE13 9BA

Hydrock

td - 0191 230 2993
newcastle@seconaut.com