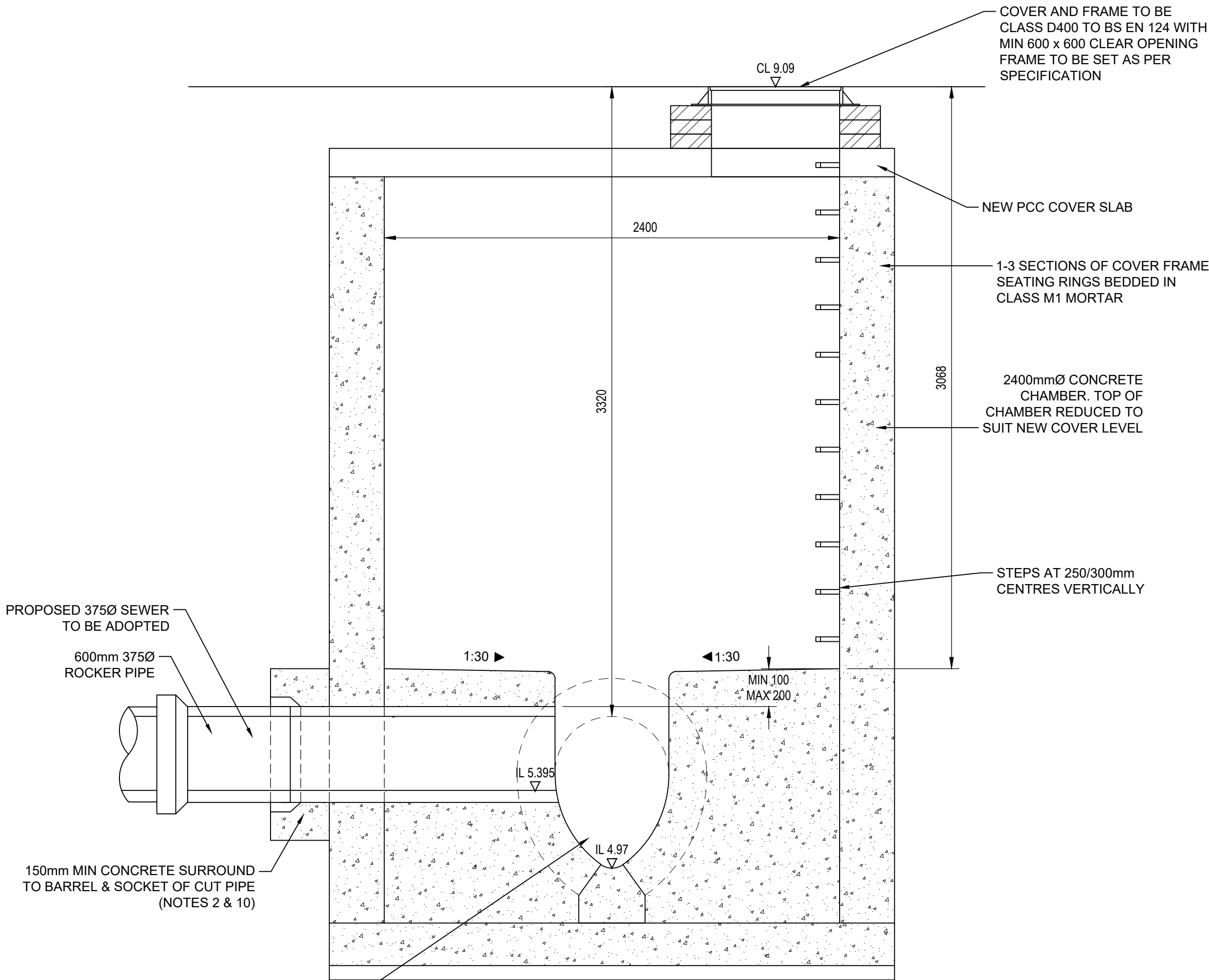
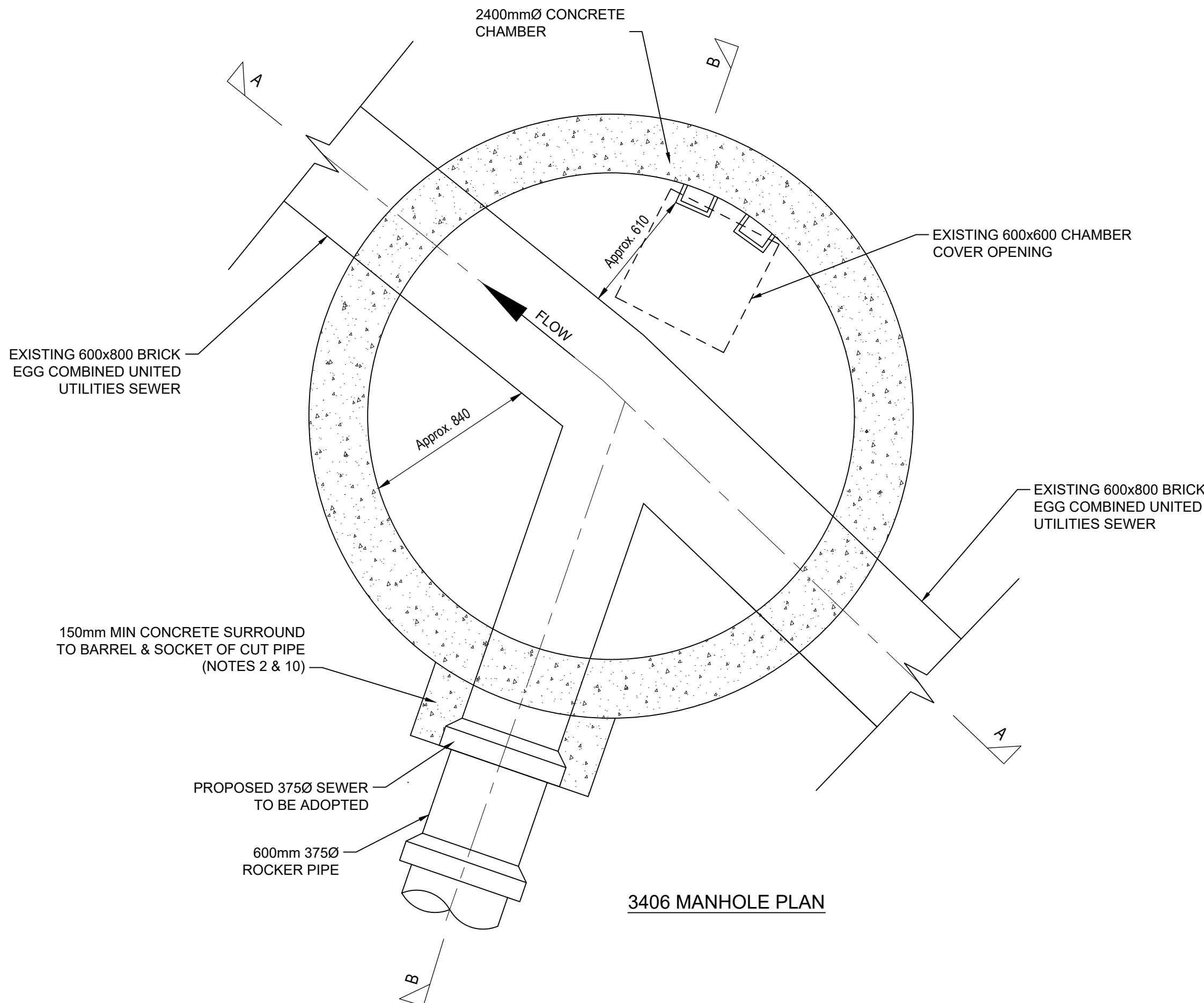


3406 MANHOLE SECTION A-A



3406 MANHOLE SECTION B-B



| REV | DATE | DESCRIPTION | DRW | CHK |
|-----|------------|------------------------|-----|-----|
| P01 | 28/06/2024 | PRELIMINARY ISSUE | SNK | GS |
| P02 | 25/07/2024 | REVISED TO UU COMMENTS | SNK | GS |
| C01 | 07/11/2024 | TENDER ISSUE | SNK | GS |
| C02 | 12/02/2025 | REVISED TO UU COMMENTS | SNK | GS |
| C03 | 17/03/2025 | REVISED TO UU COMMENTS | MH | SNK |
| C04 | 24/04/2025 | REVISED TO UU COMMENTS | SNK | MP |

NOTES

- ALL DIMENSIONS ARE IN MILLIMETRES
- CONCRETE BENCHING AND PIPE SURROUND**
SHALL BE PLACED IN SINGLE CONTINUOUS OPERATION FROM TOP OF BASE SLAB TO TOP OF BENCHING AND PIPE SURROUND
- CONNECTION INTO MANHOLES**
SHALL BE CONSTRUCTED WITH THE SOFFITS LEVEL UNLESS DETAILED DIFFERENTLY ON CONTRACT DRAWINGS
- METALWORK**
LADDERS, HANDRAILING AND SAFETY CHAIN SHALL BE AS SHOWN ON DEVELOPER SERVICES DETAIL 9 (STND/19/009)
- CONCRETE SURROUND TO MANHOLES**
A CONCRETE SURROUND IS NOT NORMALLY REQUIRED TO MANHOLES UNLESS INSTALLED IN AREAS OF UNSTABLE GROUND, UNDER CONDITIONS OF FLotation OR WHERE SUBJECTED TO EXCEPTIONAL OR ECCENTRIC LOADS. IN WHICH CASES A 150 SURROUND OF AT LEAST 20 N/mm CONCRETE SHALL BE PROVIDED. ANY JOINTS SHOULD BE STAGGERED WITH PRECAST CONCRETE JOINTS
- MINIMUM LENGTH OF CHANNEL (X Min)**

| CHAMBER DIA | "X" MIN |
|-------------|---------|
| 1050 | 800 |
| 1200 | 950 |
| 1350 | 1000 |
| 1500 | 1050 |
| 1800 | 1150 |
| 2100 | 1300 |
| 2400 | 1450 |
| 2700 | 1550 |
| 3000 | 1700 |

- CUT ENDS OF REINFORCED CONCRETE PIPES**
SHALL BE TREATED WITH EPOXY RESIN PAINT/MORTAR
- MANHOLE ACCESSES FOR MANHOLE ACCESS**
OPTIONS AND DETAILS SEE DEVELOPER SERVICES DETAIL 10 (STND/19/010)
DOUBLE STEPS SHALL BE PLASTIC ENCAPSULATED CARBON STEEL TO BS EN 1247-2. DOUBLE STEPS SHALL NOT BE USED WHERE COVER-TO-SOFFIT DIMENSION IS >3.0m
- COVER AND FRAME**
150 DEEP COVERS ARE TO BE USED IN CATEGORY 1, 2, 3 ROADS. 100 DEEP COVERS ARE TO BE USED IN CATEGORY 4 ROADS. DOUBLE TRIANGULAR COVERS ARE TO BE USED IN CARRIAGEWAY. ROAD CATEGORY TO BE DESIGNATED BY THE HIGHWAY AUTHORITY. FRAME TO BE SET AS PER SPECIFICATION
- CONCRETE**
ALL IN-SITU CONCRETE TO BE DC - 3 OR FND3
- VARIABLE FEATURES (V.F.)**
WHERE V.F. APPEARS IN ANNOTATION REFER TO VARIABLE FEATURES AS SHOWN ON DEVELOPER SERVICES DETAIL 10 (STND/19/010)

SUBJECT TO THE APPROVAL OF
ALL RELEVANT AUTHORITIES

Client
Aldi Stores Ltd.

Project Title
Aldi - Whitehaven

Project Address
**Preston Street
Whitehaven**

Drawing Title
Manhole 3406 Proposed Details

| Job No. | Originator | Zone | Level | Type | Role |
|-----------------------|-------------|-------------|----------|------|------|
| 79-EXXX | 3E | ZZ | XX | DR | C |
| System Classification | Drawing No. | Suitability | Revision | | |
| Ro. 50_20_11 | -6003 | D2 | C04 | | |
| Drawn | Checked | Date | Scale | Size | |
| SNK | GS | Jun 2024 | 1:20 | A1 | |

Newcastle Office
2 Esh Plaza, Sir Bobby Robson Way
Great Park, Newcastle upon Tyne
NE13 9BA

Hydrock

Tel : 0191 230 2993
newcastle@seconult.com

SUBJECT TO THE APPROVAL OF
ALL RELEVANT AUTHORITIES