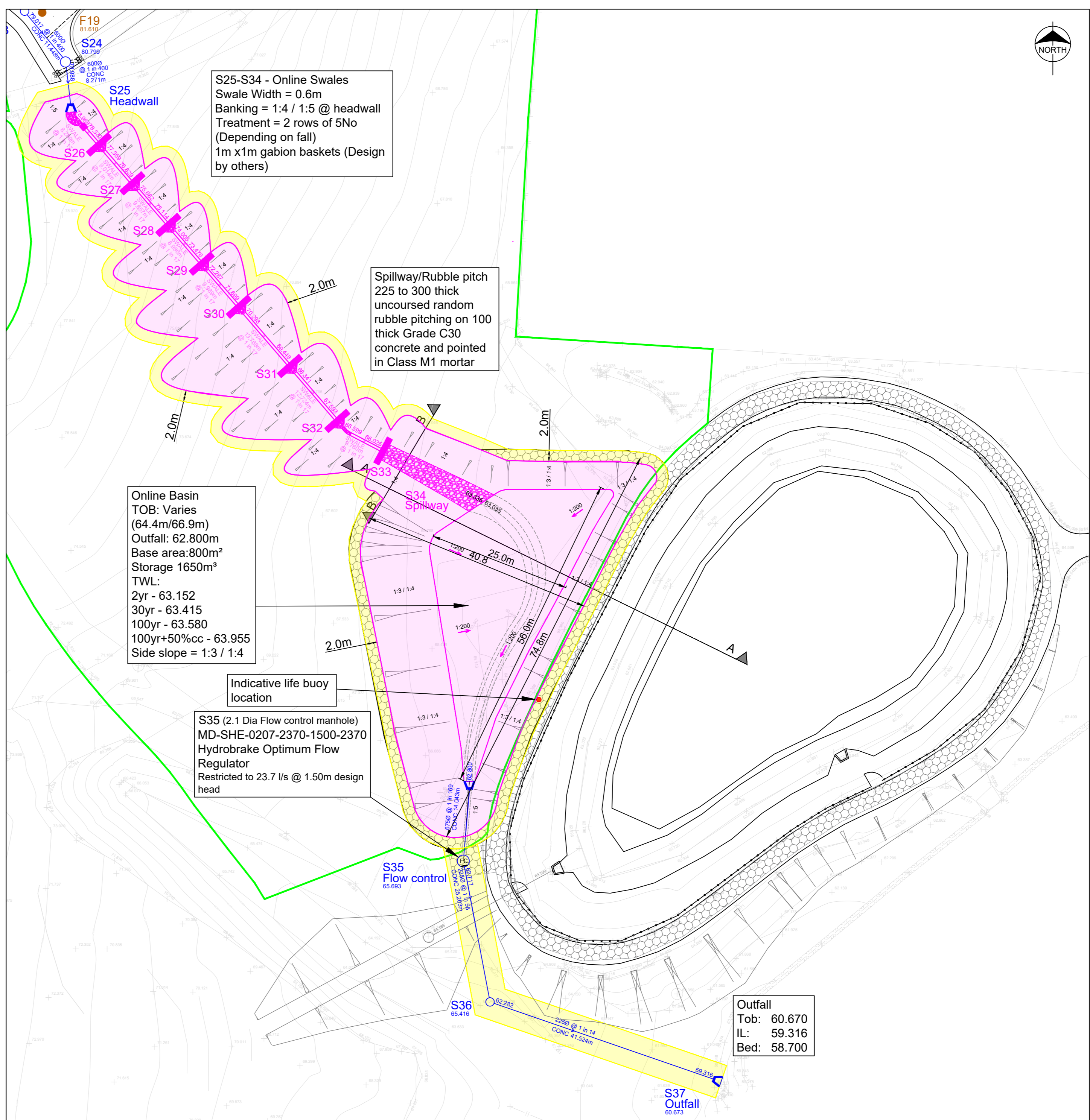
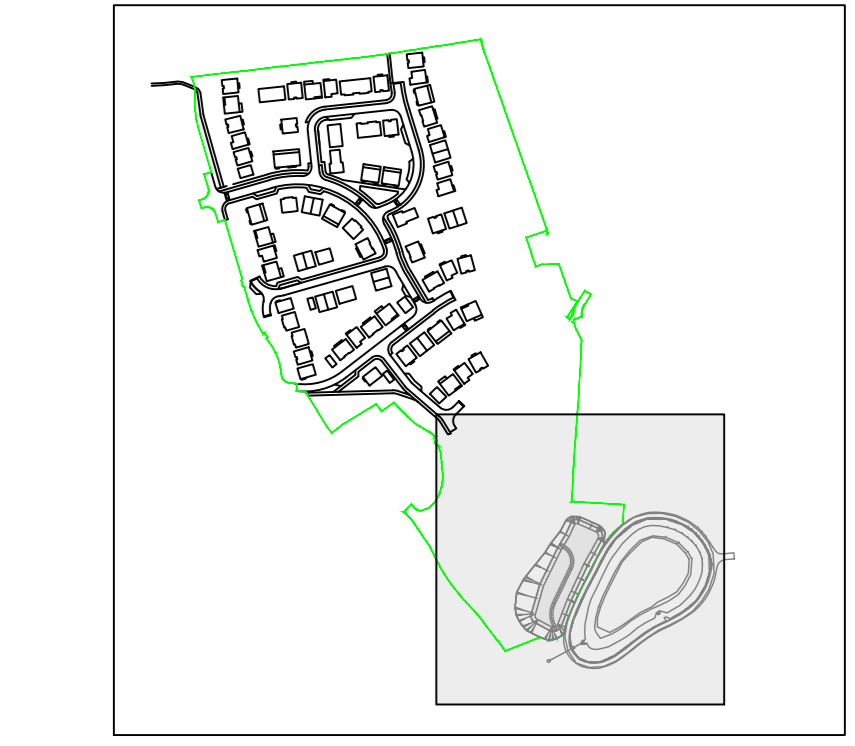


	S25	S26	S27	S28	S29	S30	S31	S32	S33	S34
GROUND LEVEL	80.000	79.027	77.140	75.340	73.535	71.951	70.489	68.987	67.204	
STORMWATER COVER LEVEL	80.000	79.255	77.613	75.933	74.280	72.537	70.536	68.577	66.854	65.600
STORMWATER INVERT	78.988	78.480	77.389	76.829	75.682	74.005	73.476	72.287	71.699	70.298
STORMWATER DETAILS	Pipe 1.013 600x600 Swale 1:4 1 in 17	Pipe 1.014 600x600 Swale 1:4 1 in 17	Pipe 1.015 600x600 Swale 1:4 1 in 17	Pipe 1.016 600x600 Swale 1:4 1 in 17	Pipe 1.017 600x600 Swale 1:4 1 in 17	Pipe 1.018 600x600 Swale 1:4 1 in 17	Pipe 1.019 600x600 Swale 1:4 1 in 17	Pipe 1.021 600x600 Swale 1:4 1 in 17	Pipe 1.022 600x600 Swale 1:4 1 in 11	
STORMWATER LENGTHS	8.289	9.014	9.657	8.986	9.989	13.768	12.724	9.761	18.215	

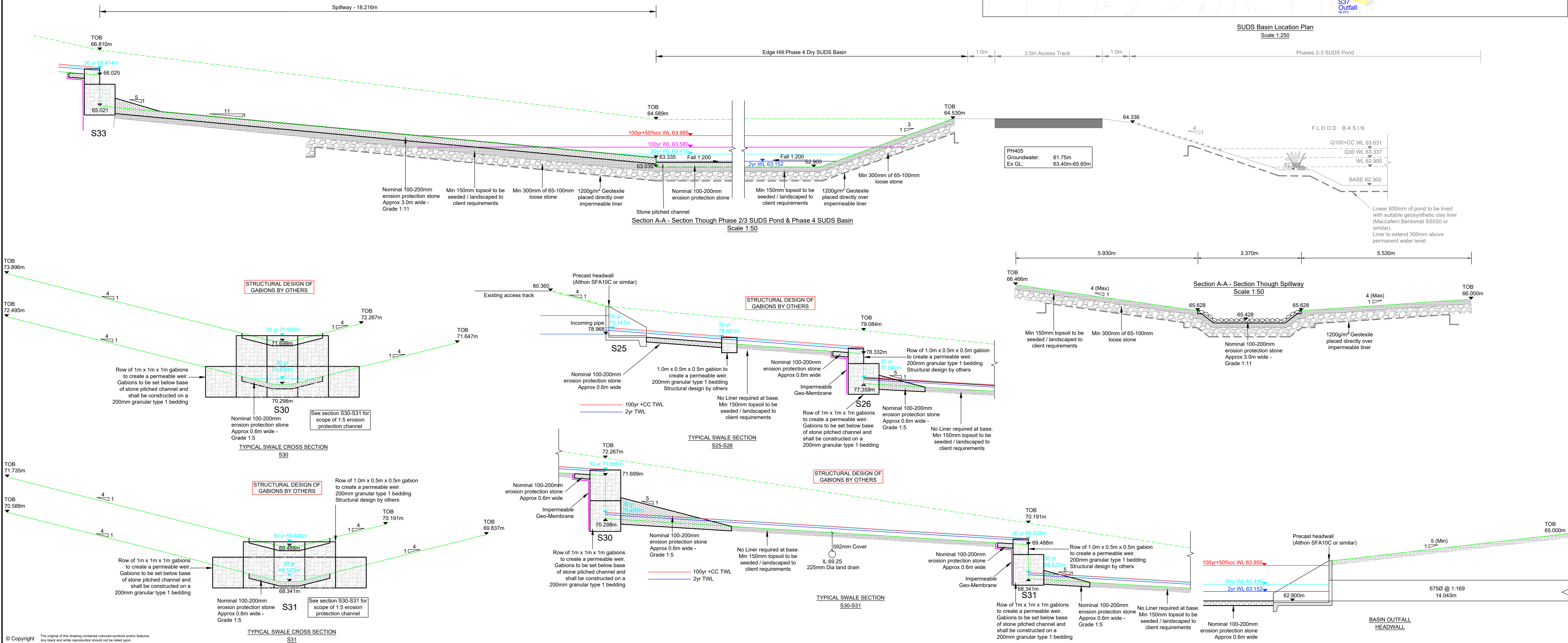
Swale Longsection  
Scale 1:250



SUDES Basin Location Plan  
Scale 1:250



KEY PLAN



Design based on Layout:  
Edgell Park Phase 4, Block Plan,  
Dwg No. 66D-STO-005  
Rev: N  
Grid Level datum based on Topo:  
Edgell Park, Whitehaven,  
Topographical Survey, Dwg No.  
230720-EHP-SH-TOPO-001  
Rev: -

Coopers Drawings List:

7843/01	Proposed Drainage Layout
7843/02	Proposed Highway Setting Out
7843/03	Proposed Highway Layout
7843/04	Proposed Highway and Drainage Longsections
7843/05	Highway Construction Details
7843/06	S18 Agreement Plan
7843/07	External Works Layout
7843/08	Private Drainage Layout
7843/09	Drainage Construction Details
7843/10	Manhole Structures
7843/11	Surface Water Manhole Details
7843/12	Foul Manhole Details
7843/13	Flow Control Manhole Details
7843/14	Surface Water Catchment Areas
7843/15	Surface Water Attenuation Pond Details
7843/16	Proposed Cut and Fill Earthworks
7843/17	Proposed Surface Finishes
7843/18	S104 Sewer Easement Plan
7843/19	Requisition Longsection
7843/20	Retention Breakdown
7843/21	Land Registry Plan
7843/22	Surface Water Manhole Details

APPROVAL

E	18.02.24	Revised to S104 comments/Liner added	JAR	AJ
D	29.01.24	Revised to S104 comments	JAR	AJ
C	05.01.24	Updated for approval	PW	AJ
B	11.08.23	Updated for approval	PW	AJ
A	28.07.23	Top and bottom of batter levels shown	PW	AJ



Client: **Story HOMES**

Project: **EDGEHILL PARK, CUMBRIA PHASE 4**

Title: **Surface Water Attenuation and Outfall Details**

DRAWING NUMBER: **7843 / 15**

SCALE at A0: 1:250

DATE	28.04.23	REVISION
DRAWN	PJN	
CHECKED	AJ	E

- Notes
- Setting out shall be undertaken using only the information given. Distances should not be scaled from this drawing.
  - All sewers shall be constructed in accordance with Design and Construction Guidance (DCG) Standards and United Utilities Details & Guidelines.
  - The minimum gravity pipe diameter under adoptable highways shall be 150mm.
  - It is the responsibility of the Contractor to verify all information given with regards to existing services and drainage connections etc. prior to commencing the works. The rates shall include for hand dig around services where necessary. The Contractor shall adhere to the CDM Regulations at all times.
  - The outfalls of all sewers shall be a minimum of 1.0m from kerb lines and the outside of manholes shall be a minimum of 0.5m from kerb lines.
  - Existing flows in watercourses, sewers and land drains shall be maintained at all times.
  - Only trained personnel shall be permitted to enter confined spaces.
  - All materials to bear the relevant B.S. Kitemark and comply fully with the specifications. All concrete & concrete products must use Sulphate resistant cement to withstand Class 3 condition (unless the site investigation report proves that sulphate attack from soils and groundwater will not occur).
  - All opening notices etc. as required under Highways Acts etc. are to be obtained prior to commencement of works. All works are to be inspected by L.A., NHC or the Network Operator as applicable.
  - Where "Ultra Rib" UPVC pipes (or similar approved) are used in adoptable drainage they shall be handled and laid in accordance with the manufacturers instructions and will be subject to post installation deformation testing prior to adoption. A Class 5 Bed and Surround must be used for "Ultra Rib" pipes.
  - Trench backfill in highways to within 1m of highway shall, as directed by the Highway Authority be a suitable granular material in all accordance with Design and Construction Guidance (DCG) Standards.
  - Slab levels shall not be varied without reference to the Engineer for guidance.
  - Pipes have not been designed to accommodate construction traffic loading. The contractor is responsible for providing adequate protection to the pipes during construction.