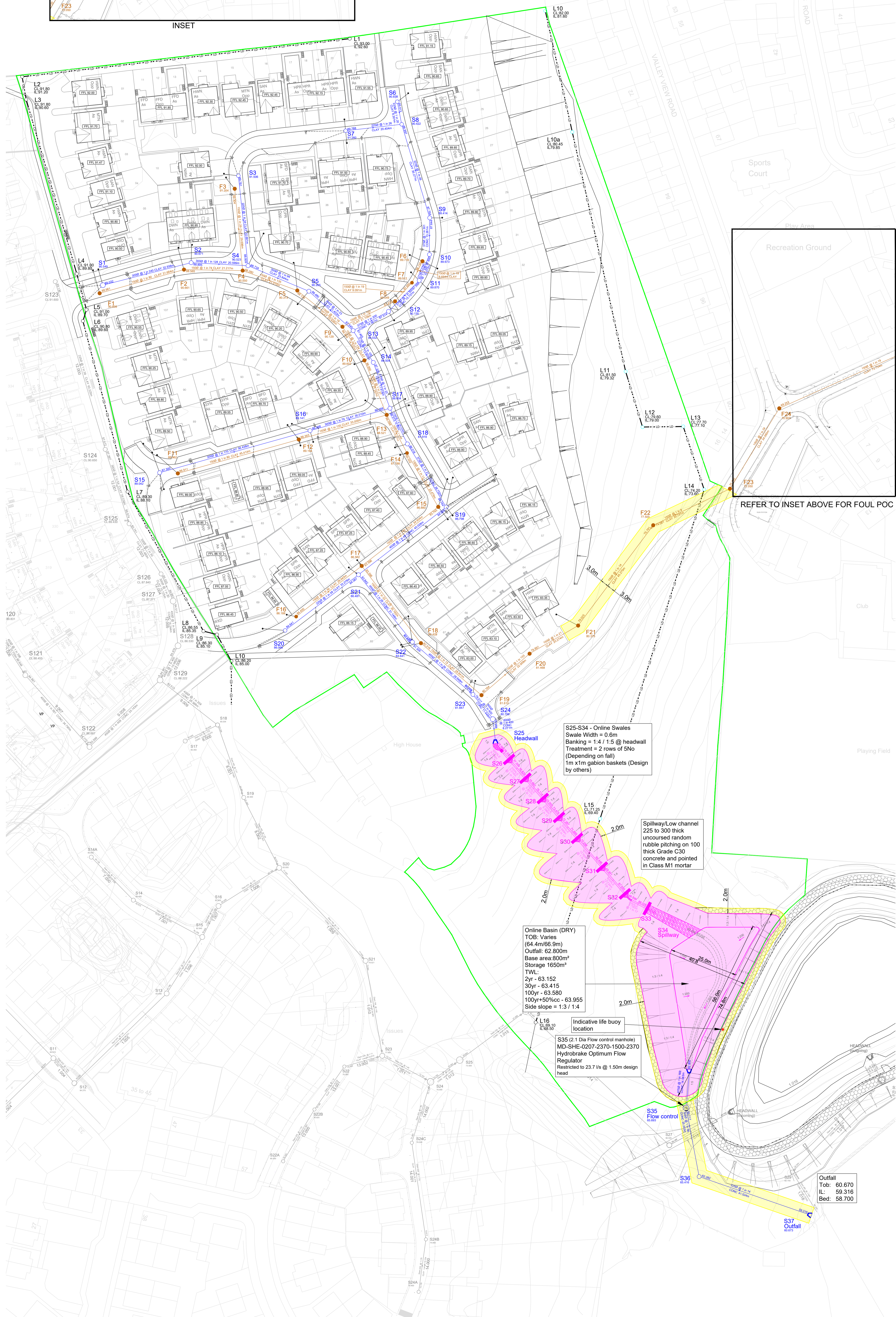


INSET



Notes

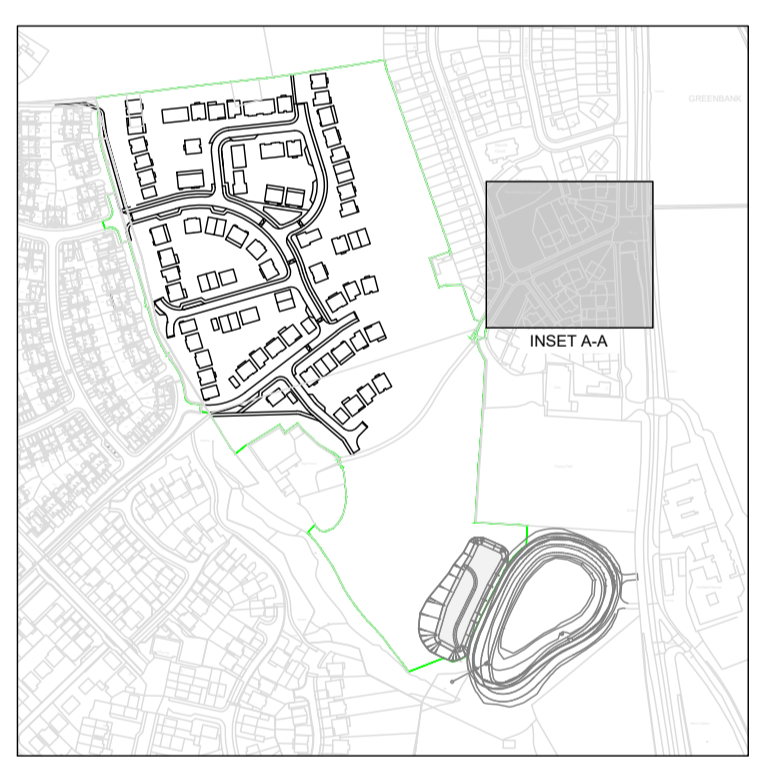
- Setting out shall be undertaken using only the information given. Distances should not be scaled from this drawing.
- All sewers shall be constructed in accordance with Design and Construction Guidance (DCG) Standards and United Utilities Details & Guidelines.
- The minimum gravity pipe diameter under adoptable highways shall be 150mm.
- It is the responsibility of the Contractor to verify all information given with regards to existing services and drainage connections etc. prior to commencing the works. The rates shall include for hand dig around services where necessary. The Contractor shall adhere to the CDM Regulations at all times.
- The outsides of all sewers shall be a minimum of 1.0m from kerb lines and the outside of manholes shall be a minimum of 0.5m from kerb lines.
- Existing flows in watercourses, sewers and land drains shall be maintained at all times.
- Only trained personnel shall be permitted to enter confined spaces.
- All materials to bear the relevant B.S. Kitemark and comply fully with the specifications. All concrete & concrete products must use Sulphate resistant cement to withstand Class 3 condition (unless the site investigation report proves that sulphate attack from soils and groundwater will not occur).
- All opening notices etc. as required under Highways Acts etc. are to be obtained prior to commencement of works. All works are to be inspected by L.A., NHIC or the Network Operator as applicable.
- Where 'Structured Wall' UPVC pipes (or similar approved) are used in adoptable drainage they shall be handled and laid in accordance with the manufacturers instructions and will be subject to post installation deformation testing prior to adoption. A Class 3 Bed and Surround must be used for 'Structured Wall' pipes.
- Trench backfill in highways to within 1m of highway shall, as directed by the Highway Authority be a suitable granular material all in accordance with Design and Construction Guidance (DCG) Standards.
- Slab levels shall not be varied without reference to the Engineer for guidance.
- Pipes have not been designed to accommodate construction traffic loading. The contractor is responsible for providing adequate protection to the pipes during construction.
- All backdrops will be in accordance with DCG clause B5.2.10 and B5.2.27.

Legend

- Site Boundary
- Existing Foul Drain
- Existing Highway Drain
- Proposed Adoptable Surface Water Sewer (S01)
- Proposed Adoptable Foul Sewer (F01)
- Flow Control Manhole
- Highway Gully
- Plot Slab Level (FFL xx.xx)
- Sewer Easement
- LD - LD - 225mm Land Drain
- CD - CD - 225mm Carrier Drain
- Hardstanding

Depth (m)	Area (m ²)
0.000	104.7
0.100	843.9
0.200	877.6
0.300	920.7
0.400	964.6
0.500	1008.9
0.600	1053.8
0.700	1099.1
0.800	1144.8
0.900	1191.0
1.000	1237.7
1.100	1284.9
1.200	1332.5
1.300	1376.6
1.400	1420.9
1.500	1465.2

BASIN DEPTH/AREA TABLE



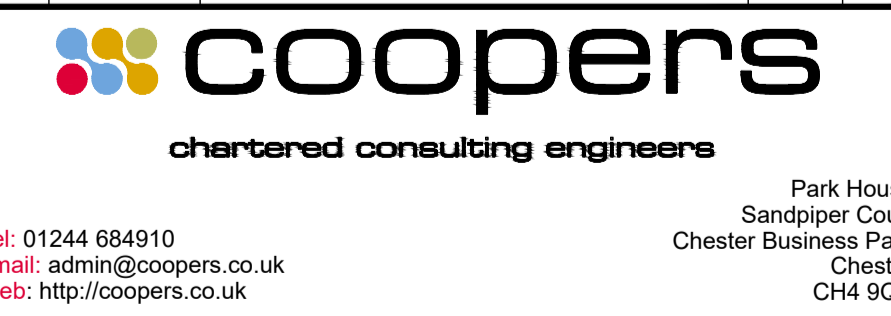
KEY PLAN

Design based on Layout: Edgell Park Phase 4, Block Plan, Dwg No. 66D-STO-005
 Rev: N
 Grid/Level datum based on Topo: Edgell Park, Whitehaven. Topographical Survey, Dwg No. 230720-EHP-SH-TOPO-001
 Rev: -

- Coopers Drawing List:
- 7843/01 Proposed Drainage Layout
 - 7843/02 Proposed Highway Setting Out
 - 7843/03 Proposed Highway Layout
 - 7843/04 Proposed Highway and Drainage Longsections
 - 7843/05 Highway Construction Details
 - 7843/06 S38 Agreement Plan
 - 7843/07 External Works Layout
 - 7843/08 Foul Drainage Layout
 - 7843/09 Drainage Construction Details
 - 7843/10 Manhole Schedules
 - 7843/11 Surface Water Manhole Details
 - 7843/12 Foul Manhole Details
 - 7843/13 Flow Control Manhole Details
 - 7843/14 Surface Water Catchment Areas
 - 7843/15 Surface Water Attenuation Pond Details
 - 7843/16 Proposed Cut and Fill Earthworks
 - 7843/17 Proposed Surface Finishes
 - 7843/18 S104 Sewer Easement Plan
 - 7843/19 Requisition Longsection
 - 7843/20 Retention Breakdown
 - 7843/21 Land Registry Plan
 - 7843/22 Surface Water Manhole Details

APPROVAL

Rev.	Date	Revision	By	Appd
H	08.03.24	Revised to S104 comments	JAR	AJ
G	21.02.24	Land drain revised	JAR	AJ
F	12.02.24	Revised to S104 comments	JAR	AJ
E	15.01.24	Revised to S104 comments	SL	AJ
D	09.11.24	Revised to S104 comments	JAR	AJ
C	11.06.23	Updated for approval	PW	AJ
B	26.07.23	Land drains added, life buoy location added	PW	AJ
A	19.06.23	Foul route on slope revised	JAR	AJ



Client: EDGEHILL PARK, CUMBRIA, PHASE 4.

Title: Proposed Drainage Layout

DRAWING NUMBER	SCALE at A0	1:500
7843 / 01	DATE	11.05.23
	DRAWN	JAR
	CHECKED	AJ
	REVISION	H

