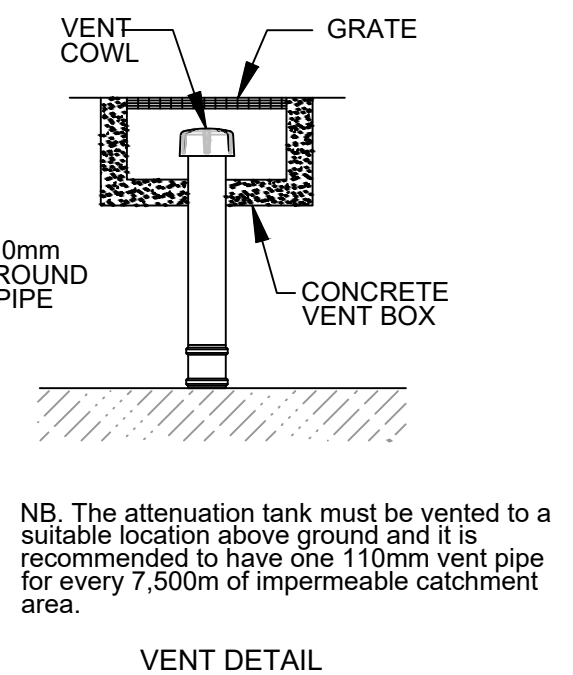
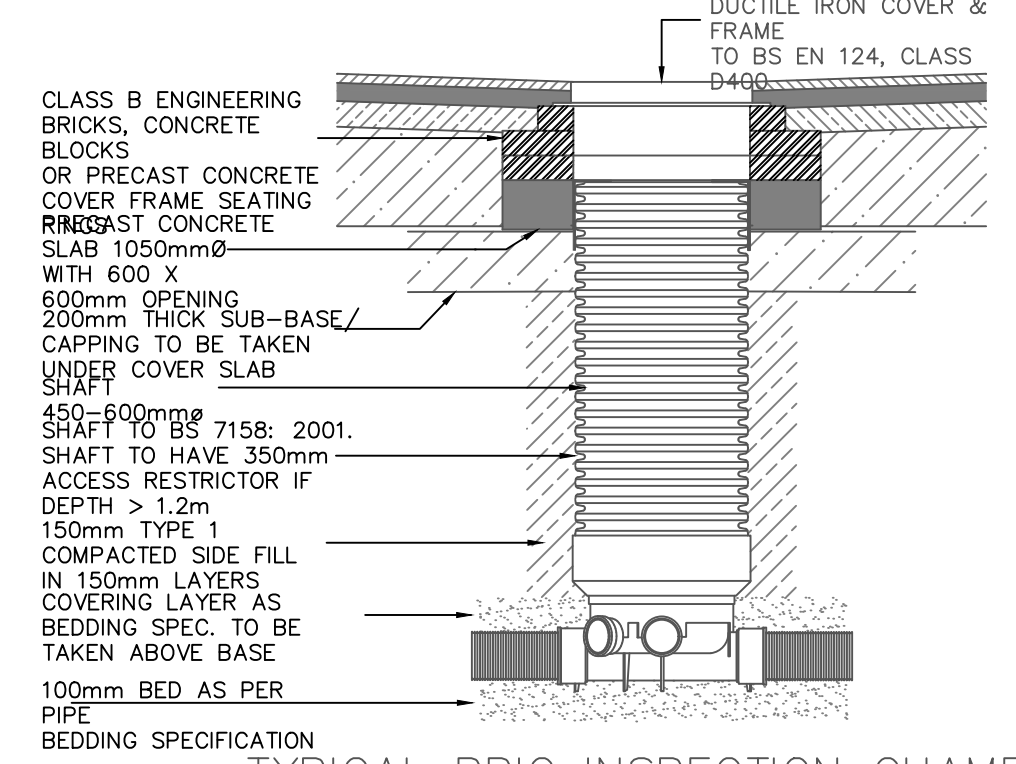


ACO MULTIDRAIN SUMP UNIT WITH SILT BASKET

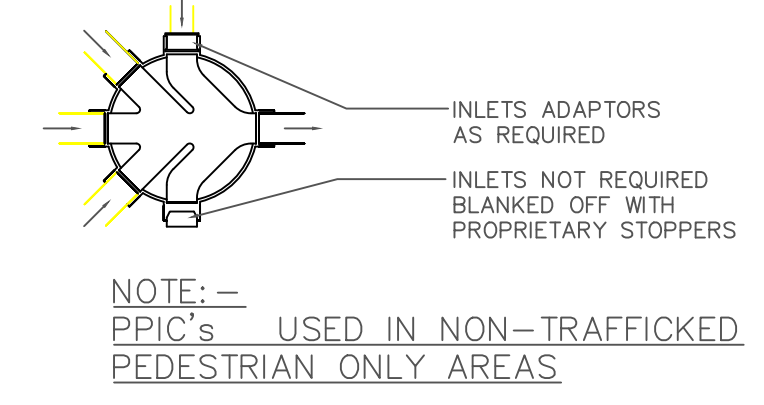


NB. The attenuation tank must be vented to a suitable location above ground and it is recommended to have one 110mm vent pipe for every 7,500m of impermeable catchment area.

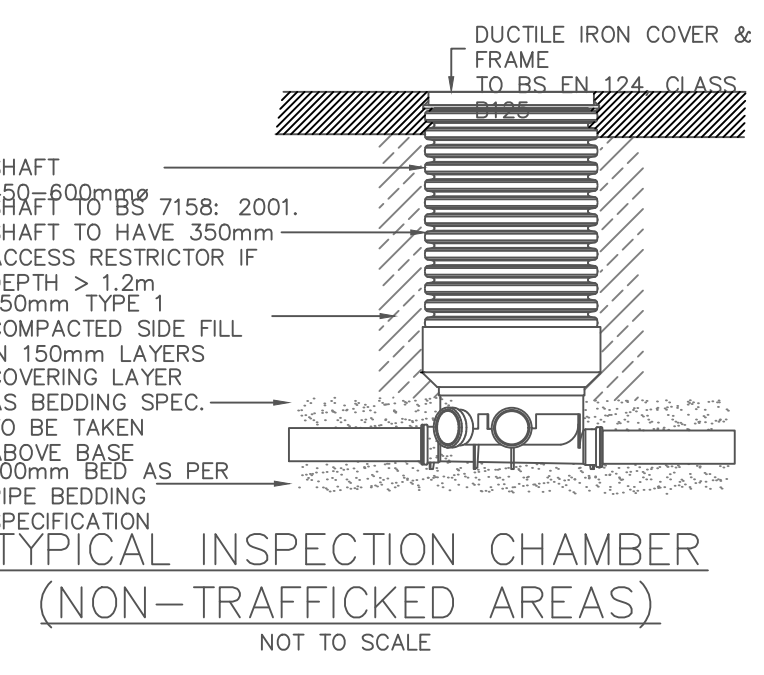
VENT DETAIL



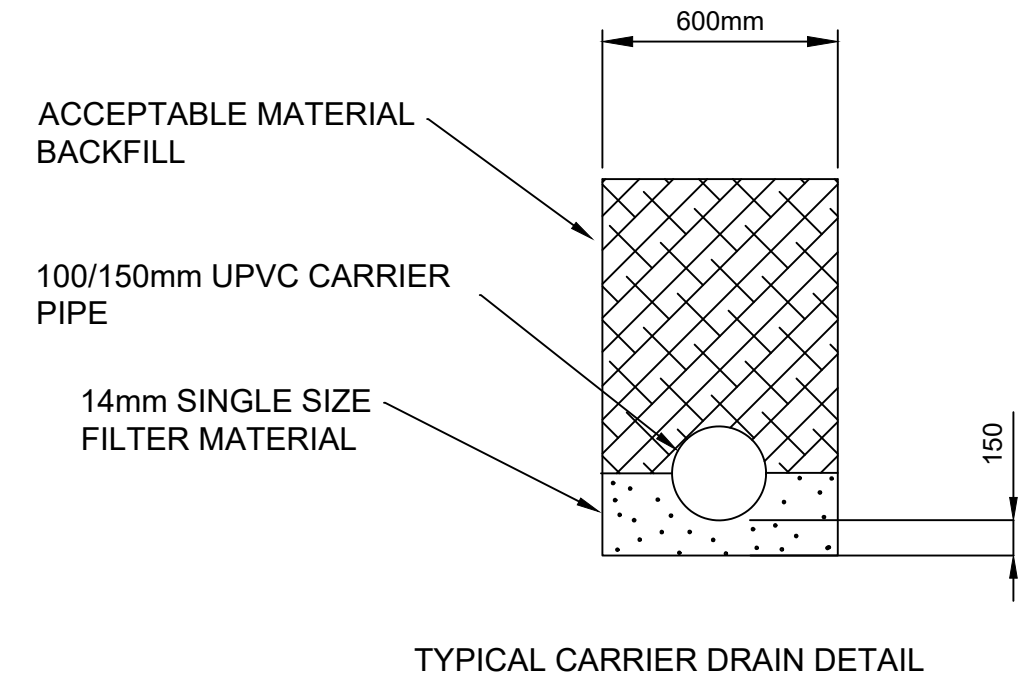
TYPICAL PPIC INSPECTION CHAMBER (VEHICULAR LOADED AREAS) NOT TO SCALE



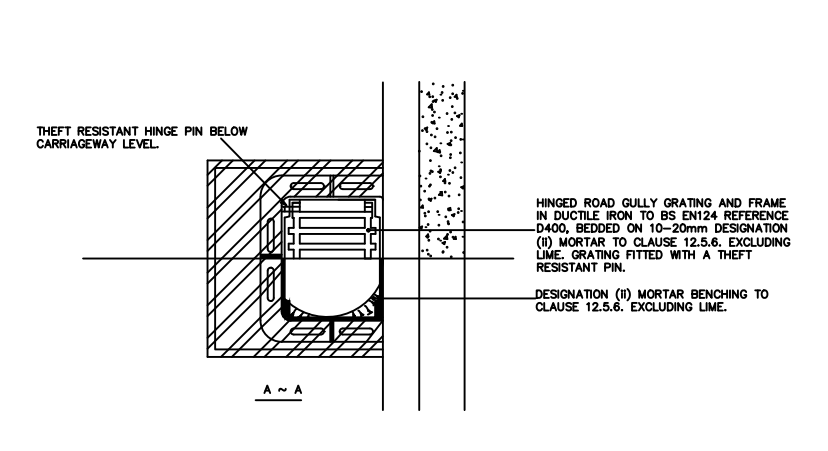
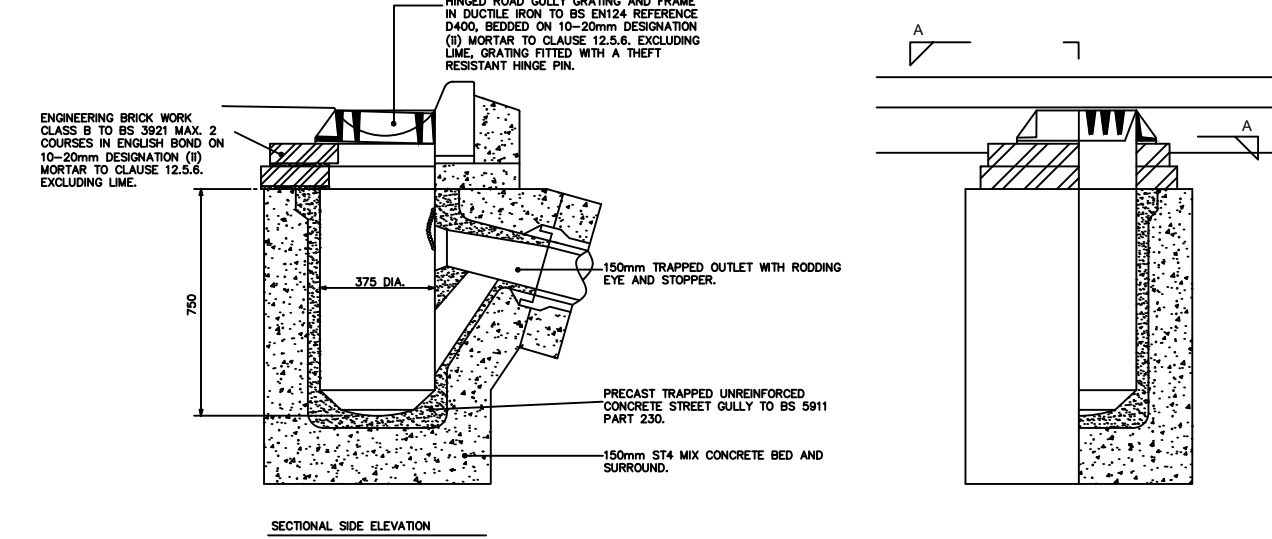
NOTE: - PPIC's USED IN NON-TRAFFICKED PEDESTRIAN ONLY AREAS



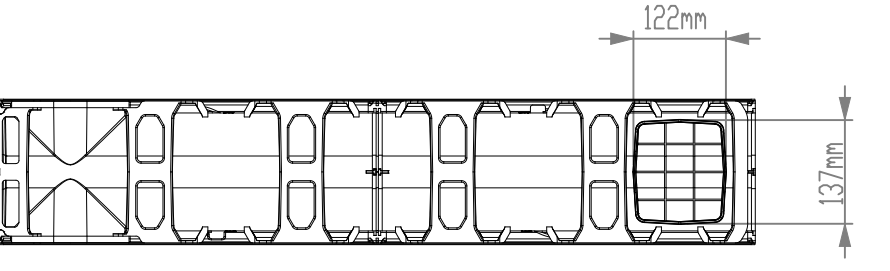
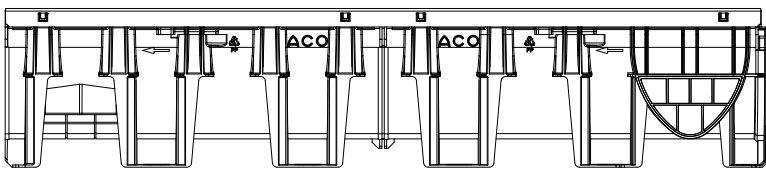
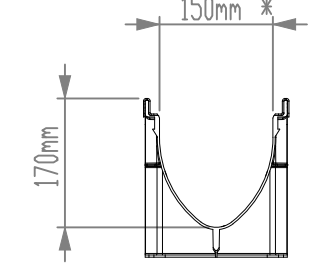
TYPICAL INSPECTION CHAMBER (NON-TRAFFICKED AREAS) NOT TO SCALE



TYPICAL CARRIER DRAIN DETAIL



TYPICAL GULLY DETAIL



ACO MULTIDRAIN DETAILS

01	24-10-24	First Issue	PE	MTY	MTY
Rev.	Date	Description	By	Chk'd	App'd

The Drainage Designers
90 Coronation Street, Sunderland, SR1 2HE

Drawing Status: **FOR APPROVAL** Suitability: S4

Project Title: **NEW DWELLING ADJACENT TO 21 SCURGILL TERRACE, EGREMONT**

Drawing Title: **TYPICAL CONSTRUCTION DETAILS**

Scale	Designed	Drawn	Checked	Authorised
NTS	PE	PE	MTY	MTY
Original Size	Date	Date	Date	Date
A1	24-10-24	24-10-24	24-10-24	24-10-24

Drawing Number: 5049-DD-XX-XX-DR-D-0003 Revision: 01