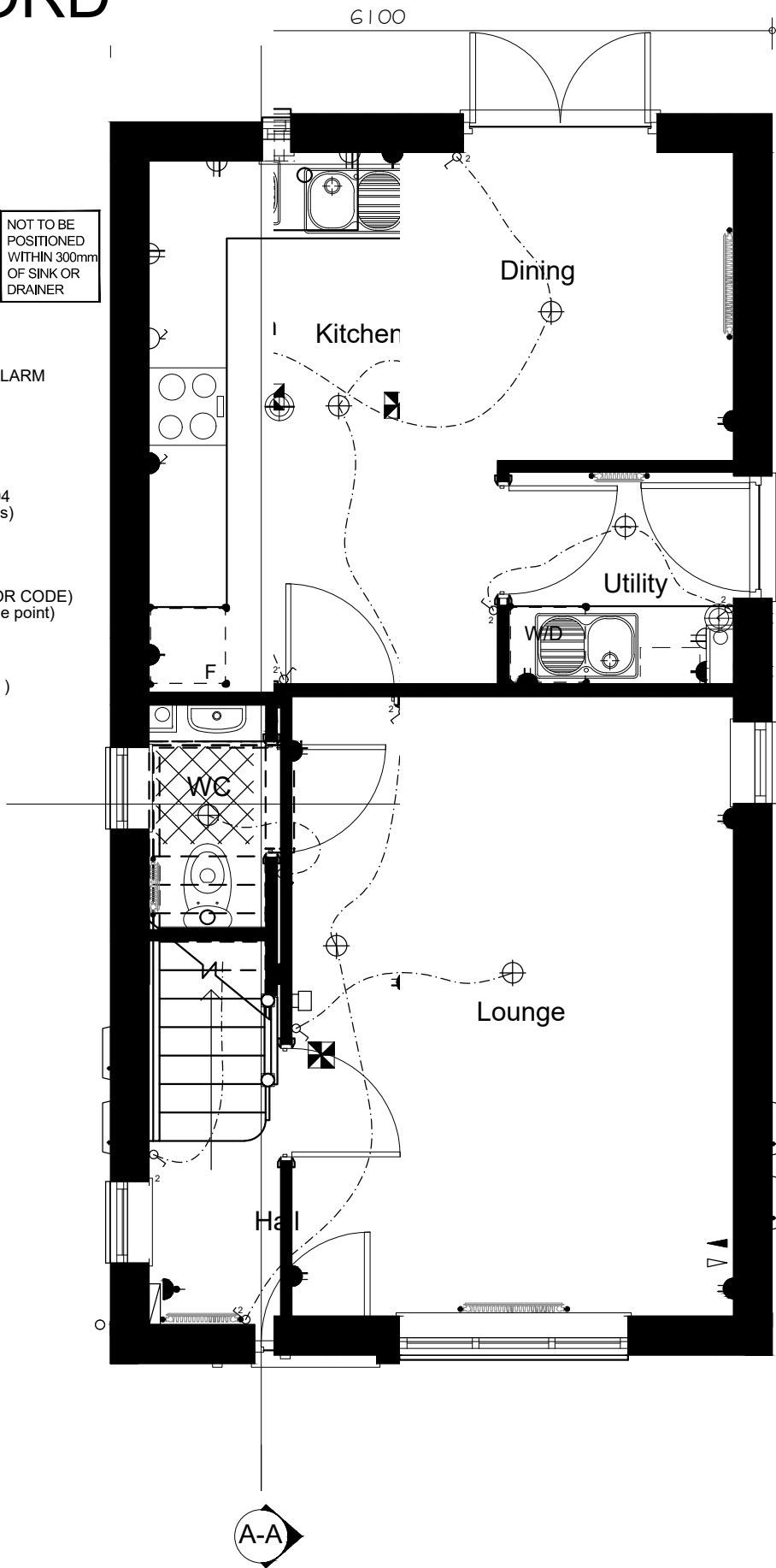


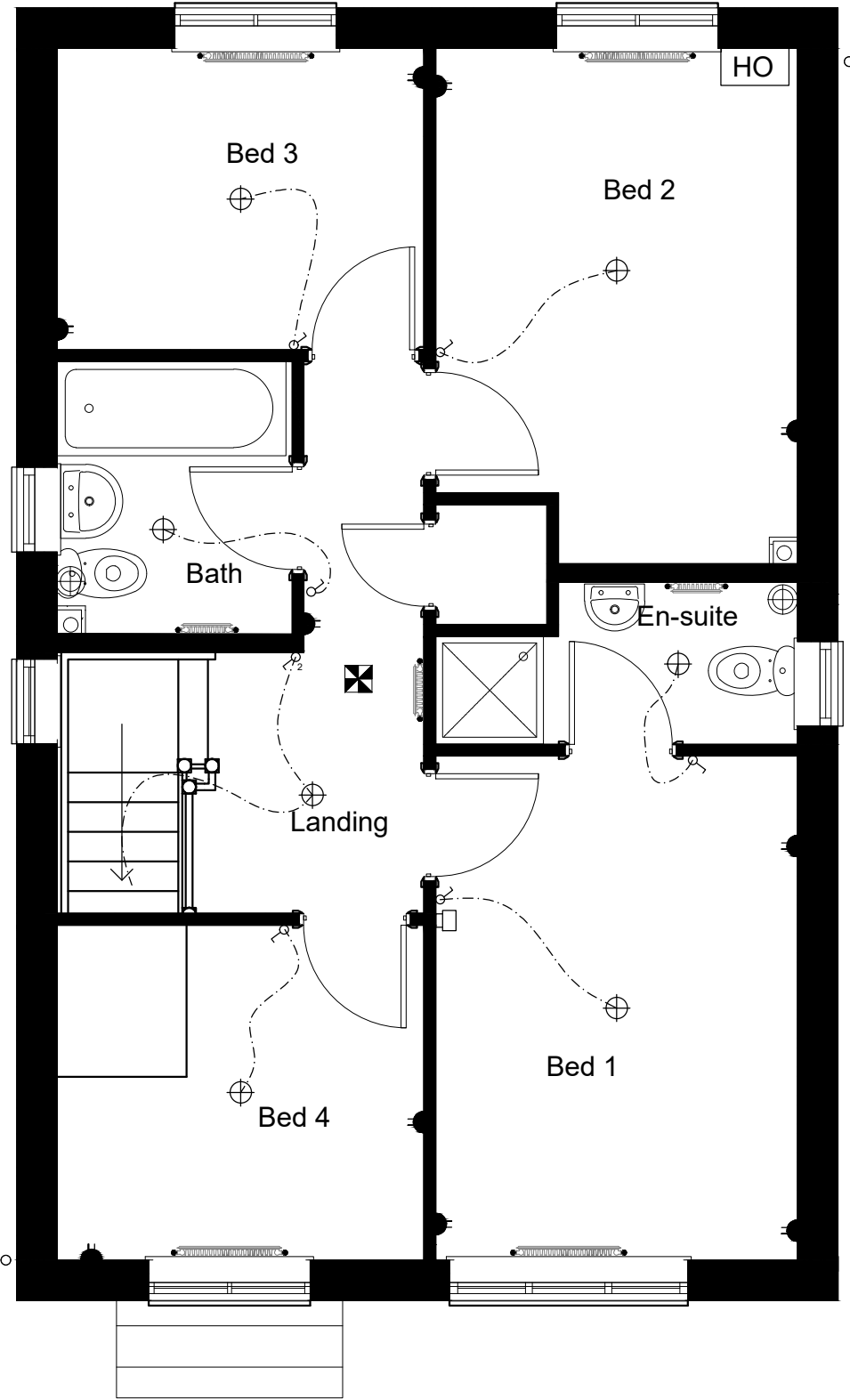
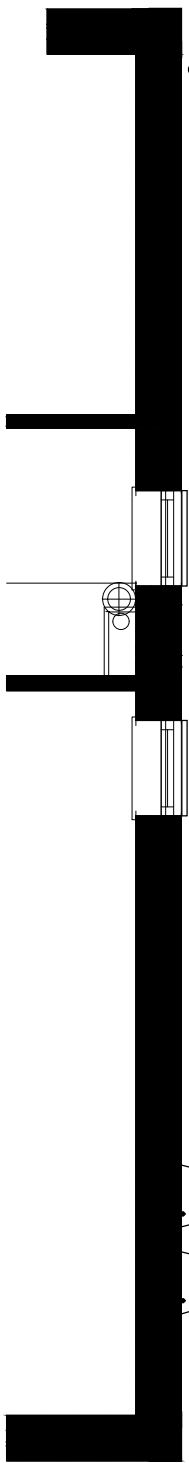
TYPE 401
THE LONGFORD

FLOOR AREA
99.00m², 1066ft²

- ELECTRIC KEY
- ⊕ CEILING LIGHT FITTED WITH ENERGY EFFICIENT BULB
 - SINGLE POLE LIGHT SWITCH
 - ² TWO WAY LIGHT SWITCH
 - ⊖ SWITCHED SINGLE SOCKET LOW LEVEL
 - ⊖² SWITCHED TWIN SOCKET LOW LEVEL
 - ⊖ SWITCHED SINGLE SOCKET HIGH LEVEL
 - ⊖² SWITCHED TWIN SOCKET HIGH LEVEL
 - ⊖ SWITCHED FUSED SPUR LOW LEVEL
 - ⊖² SWITCHED FUSED SPUR HIGH LEVEL
 - ⊖ FUSED SPUR LOW LEVEL FOR FUTURE ALARM (ONLY APPLICABLE TO CODE PLOTS)
 - ⊕ EXTRACT FAN
 - △ TV AERIAL POINT
 - ▲ INCOMING BT POINT
 - ⊗ SMOKE/HEAT DETECTOR to BS5839-6:2004 (positioned min 300mm away from light fittings)
 - CONSUMER UNIT
 - RADIATOR POSITION
 - HO HOME OFFICE OPTION (COMPULSARY FOR CODE) (additional double power socket and telephone point)
 - SOIL AND VENT PIPE BOXING
 - HEATING THERMOSTAT (dual zone control)
- NOT TO BE POSITIONED WITHIN 300mm OF SINK OR DRAINER



Alternative ground floor layout for exposed corner plots



OPPOSITE HAND issue 401AJ