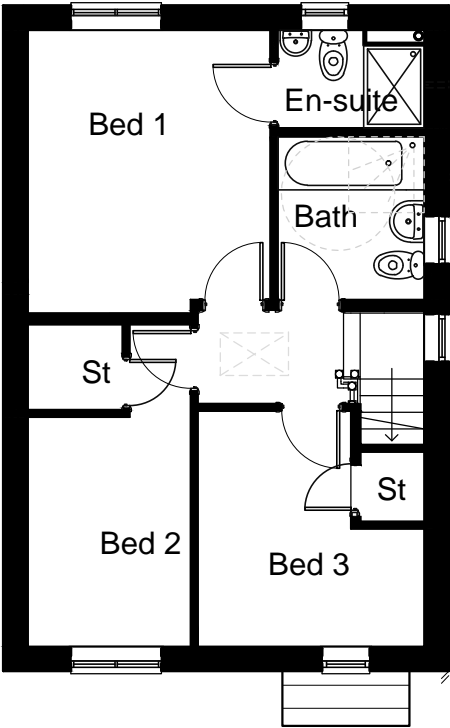
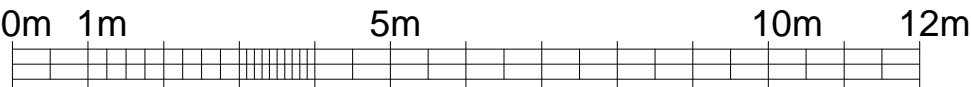


GROUND FLOOR PLAN



FIRST FLOOR PLAN



FLOOR AREA
85.4m², 919ft²

PLANNING
DRAWING

360 dwelling type

GLEESON
HOMES & REGENERATION

A	Hallway amended, Bed 3 door handed	04.03.20	Scale
B	M4(2) requirements accommodated	07.07.20	
			1:100 at A2
			Date
			Oct.19
			Dwg No
			360/1B