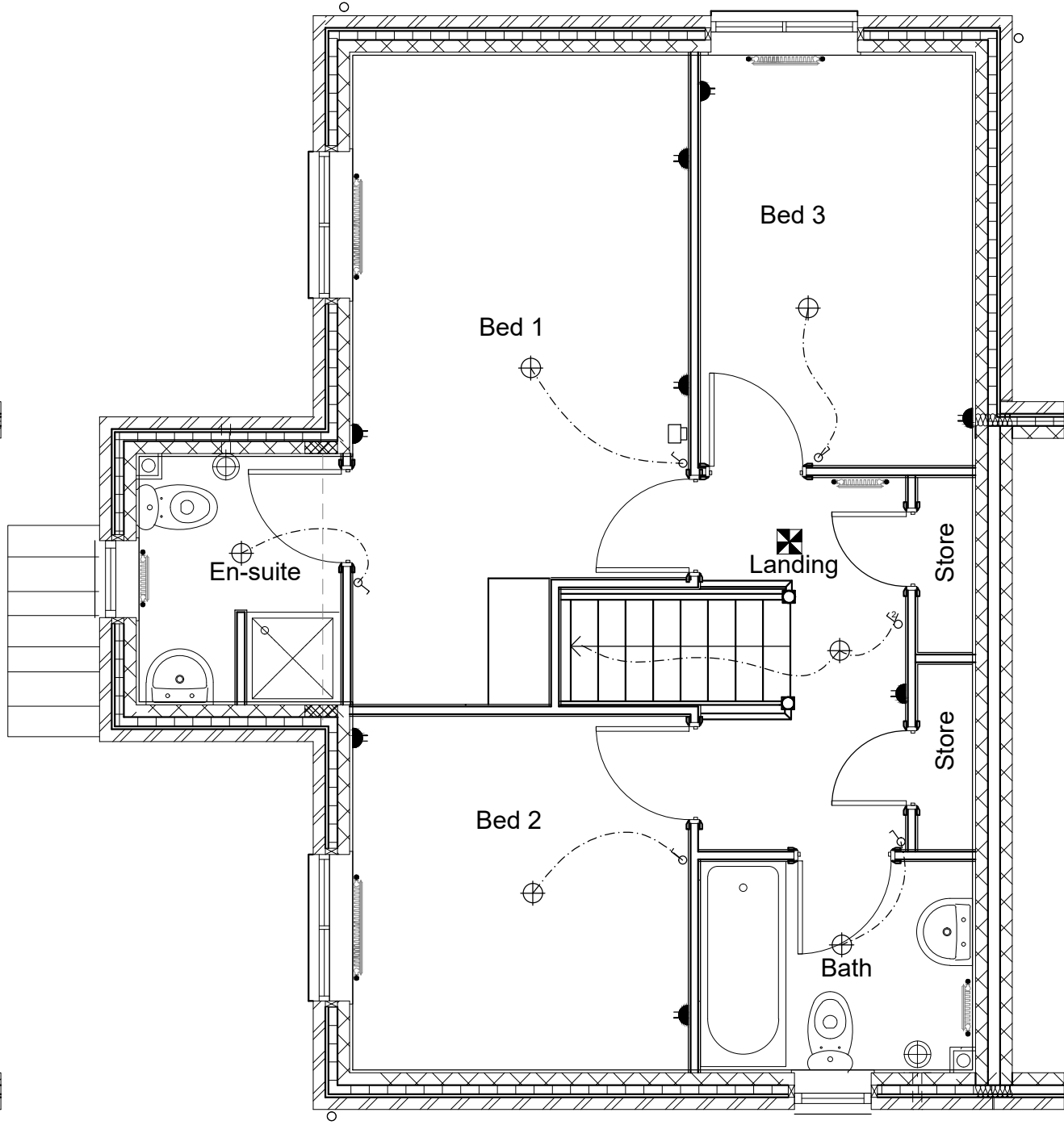
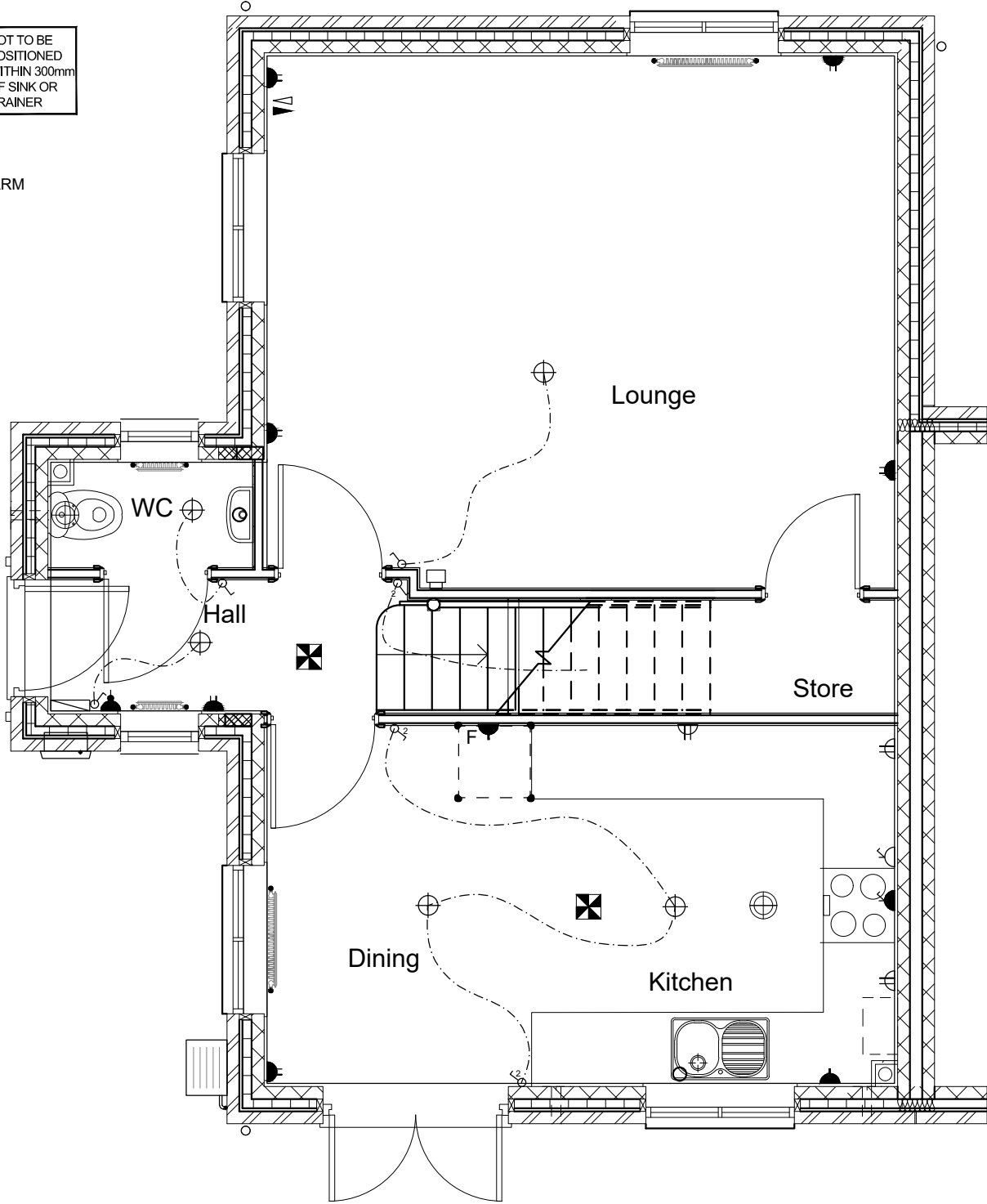


# TYPE 358 (semi)

# TYPE 359 (detached)

- ELECTRIC KEY**
- ⊕ CEILING LIGHT FITTED WITH ENERGY EFFICIENT BULB
  - ⌚ SINGLE POLE LIGHT SWITCH
  - ⌚<sup>2</sup> TWO WAY LIGHT SWITCH
  - ⌚ SWITCHED SINGLE SOCKET LOW LEVEL
  - ⌚ SWITCHED TWIN SOCKET LOW LEVEL
  - ⌚ SWITCHED SINGLE SOCKET HIGH LEVEL
  - ⌚ SWITCHED TWIN SOCKET HIGH LEVEL
  - ⌚ SWITCHED FUSED SPUR LOW LEVEL
  - ⌚ SWITCHED FUSED SPUR HIGH LEVEL
  - ⌚ FUSED SPUR LOW LEVEL FOR FUTURE ALARM (ONLY APPLICABLE TO CODE PLOTS)
  - ⊕ EXTRACT FAN
  - ⌚ TV AERIAL POINT
  - ⌚ INCOMING BT POINT
  - ⊕ SMOKE/HEAT DETECTOR to BS5839-6:2004 (positioned min 300mm away from light fittings)
  - ⌚ CONSUMER UNIT
  - ⌚ RADIATOR POSITION
  - ⌚ SOIL AND VENT PIPE BOXING
  - ⌚ HEATING THERMOSTAT ( dual zone control )
- NOT TO BE POSITIONED WITHIN 300mm OF SINK OR DRAINER



FLOOR AREA

91.44m<sup>2</sup>, 984ft<sup>2</sup>