

Appendix 2 – Letters to residents



DEANERY ROAD
BRISTOL BS1 5AS
UNITED KINGDOM

Dear resident

Re: the existing Haverigg wind farm

We are writing to let you know that we hope to apply for permission to continue operating the existing wind turbines on Haverigg airfield for 10 - 15 years beyond the expiry of existing planning consents. There will be no changes to the wind turbines and no new building works. The enclosed leaflet provides more information.

We would very much like to hear your views about our proposed extension to the operational life of the wind farm, so we are inviting you to an informal, drop-in consultation event where you can ask questions and find out more.

Date: Wednesday 23 October 2019

Location: The Lighthouse Centre, Haverigg

Time: 2pm – 8pm

There has been a wind farm on this site for over 25 years and the current turbines generate enough electricity annually to power over 4,100 typical UK homes¹. We maintain them to a very high standard with regular services and inspection visits. They are also monitored remotely throughout the day.

We very much value and appreciate the support of the local community in our operations so far. We are at a critical point in global efforts to tackle climate change and you can be confident that by continuing to host the turbines you are doing your bit to help preserve the planet for future generations.

Please do come to the event if you can, ask questions and share your views. If you are not able to attend, please feel free to email us at info@thrivere Renewables.co.uk or send your comments by post using the enclosed leaflet to Haverigg wind farm, c/o Thrive Renewables, Deanery Road, Bristol BS1 5AS before 1 November 2019. We will also collect the enclosed feedback form at the event and carefully consider all comments in further developing our plans.

Thank you once again for your support over the years hosting the turbines, we look forward to hearing from you.

Yours sincerely

Matthew Clayton
Thrive Renewables

Colin Palmer
Windcluster

¹ www.renewableuk.com/page/UKWEExplained



THRIVE
RENEWABLES



HAVERIGG WIND FARM

We are proposing to continue operating the wind turbines¹ at Haverigg airfield for 10 - 15 years beyond the expiry of existing planning consents. Please let us know what you, as people who live or work locally, think.

Everything will stay as it is now

Nothing will change. There will be no changes to the existing turbines and no building works.

Tried and tested

We maintain the turbines to a very high standard with regular services and inspection visits. They are also monitored remotely throughout the day.

Preserving the planet for the next generation

Just by leaving the site as it is, we can ensure the turbines keep producing enough clean, green electricity to power over 4,100 average UK homes². This means the UK burns less polluting fossil fuels like coal, oil and gas to make the electricity we all need to heat and light our homes and power our economy.



Working in the community

We have made voluntary grants and donations to Haverigg primary school and local community buildings totalling over £27,000 over the last 20 years. Around £500,000 overall has been paid in business rates.

¹ Although they look like one wind farm, the turbines are operated as two separate projects by Thrive Renewables and Windcluster Ltd (Haverigg II and Haverigg III) so we will actually be submitting two separate applications.

² www.renewableuk.com/page/UKWEDEXplained

We will be holding a drop-in consultation event at The Lighthouse Centre, Haverigg on Wednesday 23 October between 2pm and 8pm. Everyone who lives or works locally is welcome to come along, ask questions and find out more.

We want to hear the views of local residents before we apply for permission to continue using the turbines. Remember, we are just applying to keep the existing site as it is, we are not proposing any changes to the existing turbines nor any new building work.



Fill in this form to provide your comments:

- I support this proposal (please indicate why below)
- I do not feel strongly about this proposal
- I am concerned about this proposal (please indicate why below)

Comments:

(continue on a separate page if necessary)

My association with the wind farm is:

- I live nearby
- I work nearby
- Other:

Name:

Email address:

Phone number:

(you may leave this section blank if you prefer your feedback to be anonymous)

Please submit your feedback at the consultation event. If you are not able to attend, please send this leaflet by post to **Haverigg Wind Farm, c/o Thrive Renewables, Deanery Road, Bristol, BS1 5AS** or email info@thrivere Renewables.co.uk .

We need to receive all comments before 1 November 2019 so we can carefully consider them in further developing our plans.

Appendix 3 – Exhibition boards

ABOUT US



Thrive Renewables – Haverigg II

Thrive Renewables is a renewable energy company. We believe in a clean, smart energy system powered by the investment of many.

Thanks to our community of 6,100 investors – large and small – we have been building and operating wind, solar and hydro power sites across the UK since 1994. We have constructed or funded a total of 22 renewable energy projects, including Haverigg II, over the last 25 years. Last year, our portfolio generated enough renewable electricity to power 55,806¹ homes and delivered a reduction of 97,000 tCO₂e greenhouse gas emissions.

We operate a voluntary Community Benefit Programme enabling community buildings local to our sites to install energy efficiency and other improvements to increase warmth, accessibility and comfort. Millom Baptist Church and Kirksanton Village Hall have already benefited from this scheme.

Thrive also provides finance for community energy groups to build and take ownership of local wind, hydro and solar projects. Baywind, a community energy co-operative, has been involved with the Haverigg II turbines for the last 20 years.

www.thriverenewables.co.uk

Windcluster – Haverigg III

Windcluster Ltd was founded in 1988 and is a small, privately owned company. We have 50 individual shareholders, the great majority of whom have been with the company since its earliest days. Windcluster Ltd was established to develop small scale wind energy projects, and we coined the term windcluster to describe them. This idea was inspired by seeing local developments in Denmark, where small groups of turbines were thoughtfully integrated into the landscape.

Windcluster was one of the first wind energy companies in the UK and Haverigg I, our first project was the second commercial wind project in the UK. Now the main activity of the company is to manage the operation of the successor to this project, the Haverigg III wind farm at Haverigg airfield.

We support the local community through an annual grant to Haverigg School and are currently exploring the feasibility of supplying electricity directly to HMP Haverigg

www.windcluster.co.uk

¹ Calculated using the most recent statistics from the Department of Business, Energy and Industrial Strategy showing that annual UK average domestic household consumption is 3,781kWh



THRIVE
RENEWABLES



Windcluster

PURPOSE OF CONSULTATION

Before we apply for permission to continue operating the wind turbines at Haverigg airfield, we are consulting with people who live and work locally.

Letters were sent to all residents of Haverigg and Kirksanton on 7 October, posters were displayed on village notice boards and a drop-in information event is taking place on 23 October.

We will consider all the comments received very carefully and take them into account in our plans.



THRIVE
RENEWABLES



Windcluster

HOW TO SUBMIT COMMENTS

Please read and complete the feedback form and post it in the box provided.

Alternatively, send the feedback leaflet by post to:
**Haverigg Wind Farm,
c/o Thrive Renewables,
Deanery Road,
Bristol, BS1 5AS**

or email: info@thrivere Renewables.co.uk

We need to receive all comments before **1 November 2019** so we can ensure they are properly considered before we finalise our plans.



THRIVE
RENEWABLES



Windcluster

HISTORY OF THE WIND FARM SITE



Thanks to its excellent wind resource, Haverigg was one of the first UK wind farms to be built. There have been turbines here since 1992. We believe the site can continue providing an important contribution to cleaning up the UK's electricity system for many years to come.

Haverigg I - the UK's second commercial wind farm, built in 1992 by Windcluster.

1992

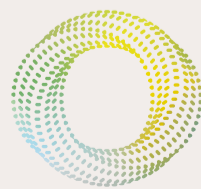
1998

The site is extended to incorporate Haverigg II, built by Thrive Renewables.

Haverigg III - the first site was repowered with new, more modern and efficient turbines

The old turbines were dismantled and continue to operate successfully to this day. Three have gone to Gigha in Scotland where they are called the Dancing Ladies: Faith, Hope and Charity. The two others are now running in the north east of England.

2004



THRIVE
RENEWABLES



Windcluster

THE PROPOSAL

We are proposing to continue operating the wind turbines¹ at Haverigg airfield for 10 - 15 years beyond the expiry of existing planning consents.

Everything will stay as it is now

Nothing will change. There will be no changes to the existing turbines and no building works.

Tried and tested

We maintain the turbines to a very high standard with regular services and inspection visits. They are also monitored remotely throughout the day.

Preserving the planet for the next generation

Just by leaving the site as it is, the turbines will keep producing enough clean, green electricity to power over 4,100 average UK homes². This means the UK burns less polluting fossil fuels like coal, oil and gas to make the electricity we all need to heat and light our homes and power our economy.



¹ Although they look like one wind farm, the turbines are operated as two separate projects by Thrive Renewables and Windcluster Ltd (Haverigg II and Haverigg III) so we will actually be submitting two separate applications.

² www.renewableuk.com/page/UKWEDEExplained



THRIVE
RENEWABLES



Windcluster