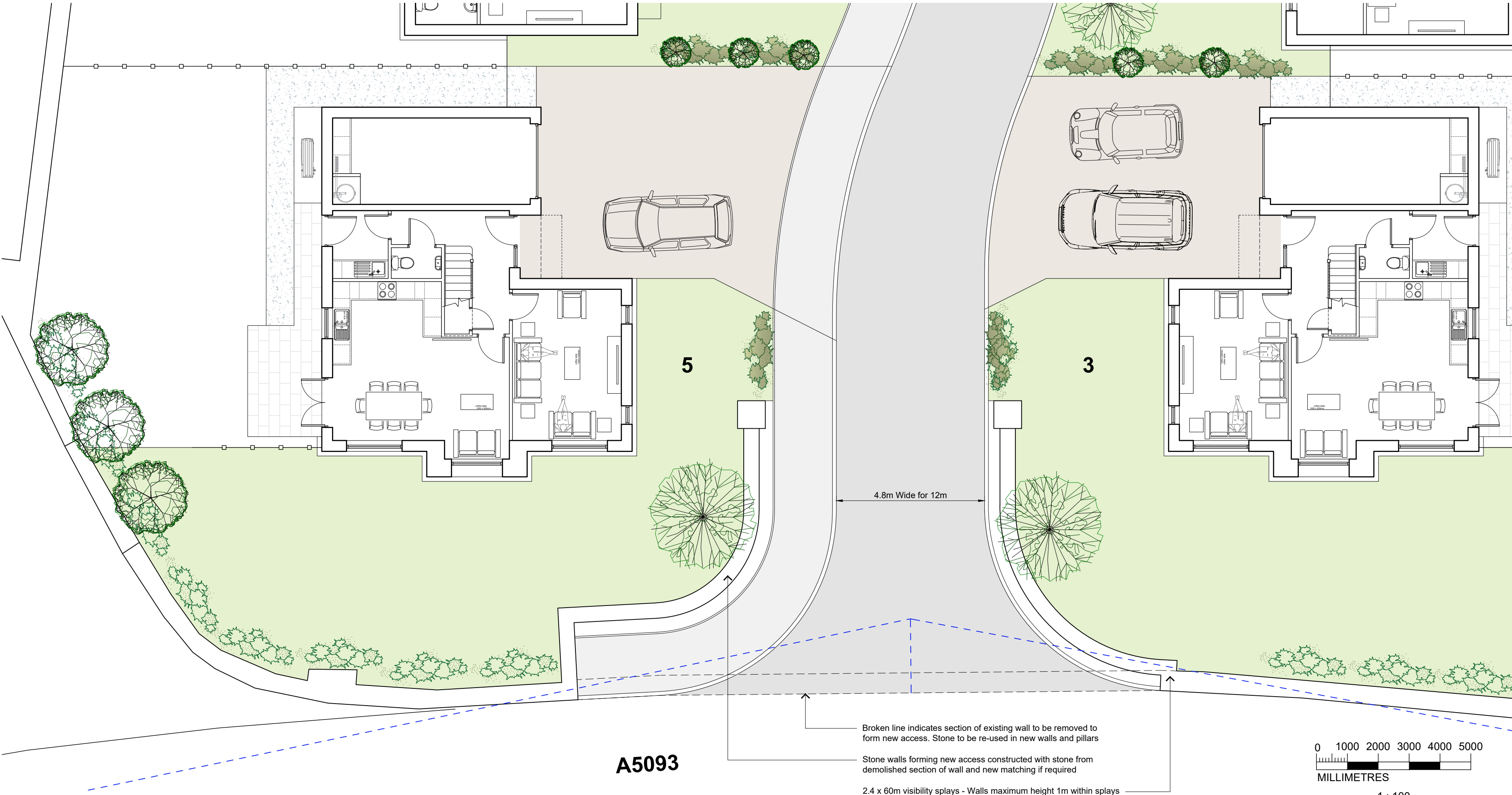


PROPOSED STREET SCENE FROM A5093  
Scale 1:100



Material Schedule

- Roofs**  
Grey concrete interlocking roofing tiles incorporating solar PV panels (configuration and position to be agreed with supplier)
- Walls**  
External block walls finished with smooth off white render. Local walling stone to single storey window projection on front elevation with feature cast stone cills, heads and string course
- Windows**  
Agate grey uPVC double glazed windows
- Doors**  
Agate grey uPVC double glazed doors
- Fascias, bargeboards and soffits**  
Black uPVC fascia, bargeboards and soffits with feature purlin ends to gable elevations as shown
- Rainwater goods**  
Black uPVC cast iron effect gutters and downpipes

P1	08/05/25	Issued for preliminary approval
No.	Date	Revision

Status	Paper Size
PLANNING	A2

The copyright of this drawing is vested in Neil Price Ltd and must not be copied or reproduced, either directly or indirectly without the consent of the company.

Responsibility is not accepted for errors made by others in scaling from this drawing - All construction information should be taken from figured dimensions only.

All heights, levels, sizes and dimensions to be checked on site and any discrepancies be notified prior to any manufacture or commencement of works.

Project  
Residential Development  
Salthouse Farm, Millom  
Title  
PROPOSED STREET SCENE (A5093)

Drawn	Checked	Date
TC		08 May 2025
Job Ref	Scale	
3189	1:100 @A2	
Sheet	Revision	
P110	P1	



**Neil Price Limited**

Office: 01229 814 317  
Bouthwood Road  
Barrow-in-Furness  
Cumbria  
LA14 4RD  
www.neil-price.co.uk