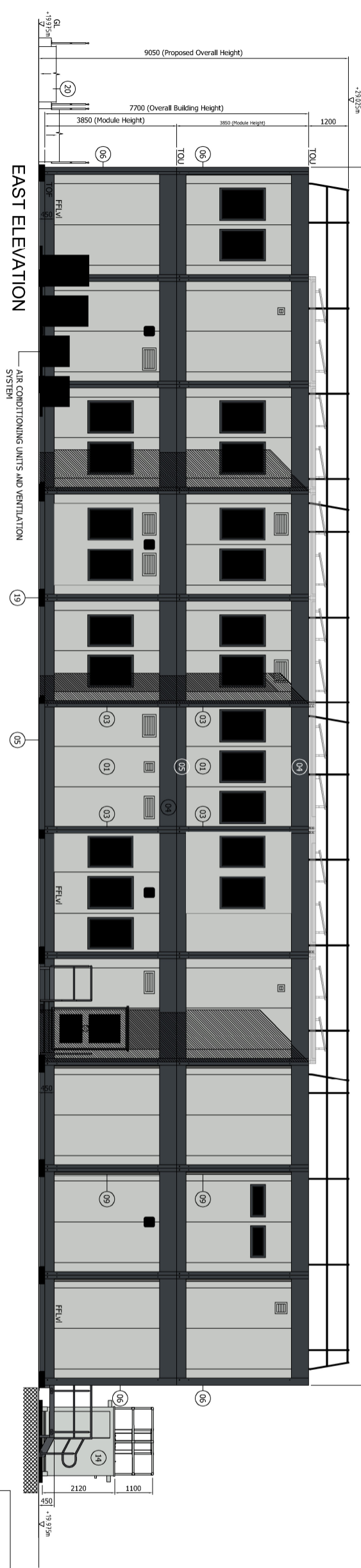
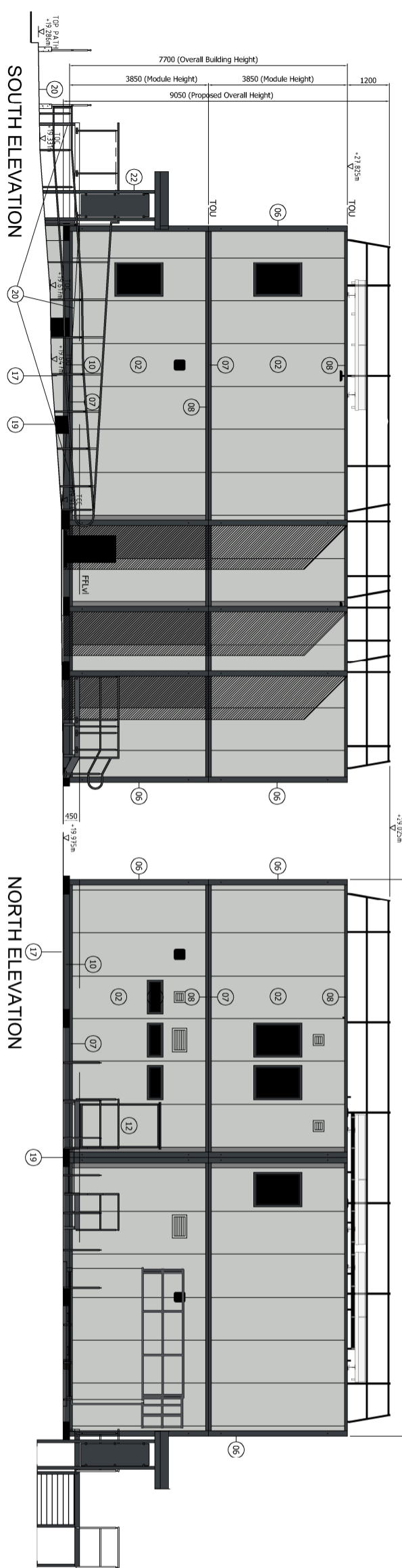


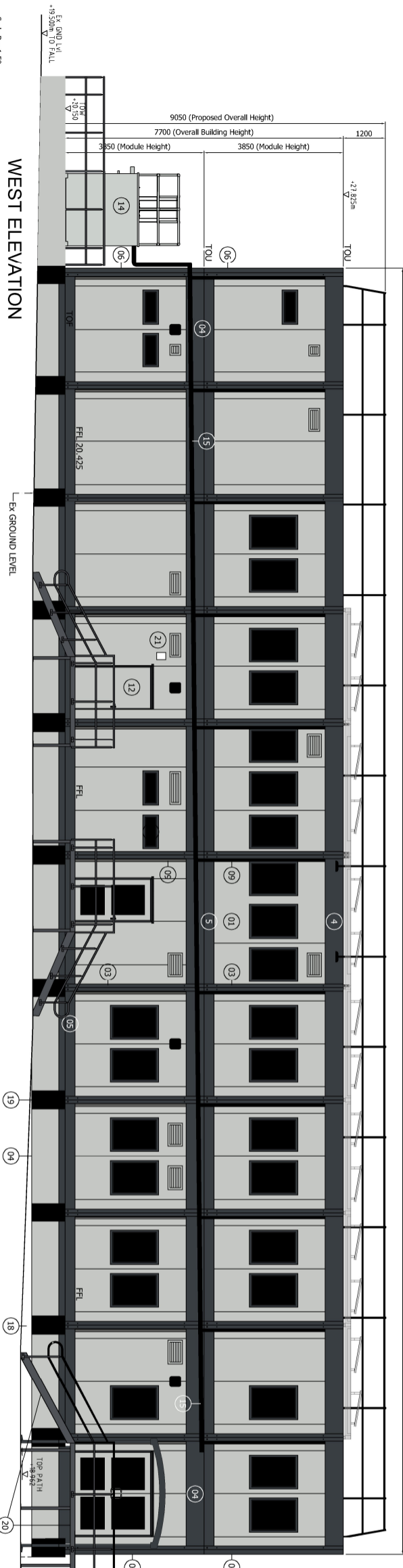
35600 (Proposed overall length)



EAST ELEVATION



NORTH ELEVATION



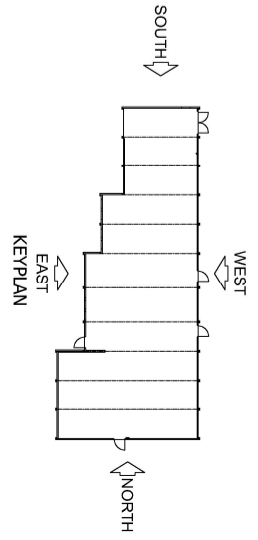
WEST ELEVATION

REFERENCE DRAWINGS:

3138539	SITE PLAN	3138543	SECTIONS THRU
3138540	TOPOGRAPHICAL SURVEY	3138544	GROUND FLOOR PLAN
3138541	ROOF PLAN	3138545	FIRST FLOOR PLAN

LEGEND:

- TOU TOP-OF-LIMIT
- CL CEILING LEVEL
- SCL SUSPENDED CEILING LEVEL
- F.F.L. FINISHED FLOOR LEVEL
- TOP OF FOUNDATION
- GL GROUND LEVEL
- TOC TOP-OF CONCRETE FOUNDATION LEVEL
- FL FOUNDATION LEVEL



Colour Schedule

Item Component	Finish	Colour
01 Wall Panels (Ceans)	Colourcoat LG Steel (Micro Rib)	BS 18817
02 Wall Panels (Gables)	Colourcoat LG Steel (Flat)	BS 18817
03 Columns	Painted Steel	Dark Grey
04 Fascias	Powder Coated Galvanised Steel	RAL 7016
05 Skirting	Powder Coated Galvanised Steel	RAL 7016
06 Corner Panel Retainer	Powder Coated Galvanised Steel	RAL 7016
07 Gable Panel Retainer	Powder Coated Galvanised Steel	RAL 7016
08 Gable Roof Trim	Powder Coated Galvanised Steel	RAL 7016
09 Rain Water Downpipes	PVC	Dark Grey
10 Pitches	Colourcoat LG Steel	RAL 7016
11 Windows	Vinyl Wrapped UPVC	Dark Grey
12 Door - Single Leaf	Frame - Colourcoat LG Steel	RAL 7016
13 Door - Double Leaf	Leaf - Colourcoat LG Steel	Light Grey (Pale Grey)
14 Stormwater Tank	Subframe - Colourcoat LG Steel	Dark Grey (Anthracite)
15 410mm RW Pipework	Frame & Leaf - Powder Coated (AL)	Light Grey
16 PV Panels	Steel	BS 18817
17 Retaining Wall (7.5 High)	Concrete	Black
18 Concrete Bath Foundation	Concrete	Natural Colour
19 Concrete Pillars (925 High)	Concrete	Natural Colour
20 Disabled Ramps	Concrete / Galvanised Steel	Natural Colour
21 Firemans Isolation Switch	Powder Coated Galvanised Steel	Frame Red
22 Entrance Canopy	Powder Coated Galvanised Steel Background Glazed	Safety Yellow
		Natural Colour

LOADING BAY

17 Retaining Wall (7.5 High)	Concrete	Natural Colour
18 Concrete Bath Foundation	Concrete	Natural Colour
19 Concrete Pillars (925 High)	Concrete	Natural Colour
20 Disabled Ramps	Concrete / Galvanised Steel	Natural Colour
21 Firemans Isolation Switch	Powder Coated Galvanised Steel	Frame Red
22 Entrance Canopy	Powder Coated Galvanised Steel Background Glazed	Safety Yellow
		Natural Colour

Mod. A	Date: 14.11.2023	ISSUED FOR PLANNING APPROVAL	Mod. B	Date: 30.11.2023	ISSUED FOR PLANNING APPROVAL	Mod. C	Date: 08.12.2023	ISSUED FOR PLANNING APPROVAL			
Drawn	Checked	Lvl.	Approved	Drawn	Checked	Lvl.	Approved	Drawn	Checked	Lvl.	Approved
Name	Signature	Name	Signature	Name	Signature	Name	Signature	Name	Signature	Name	Signature

Project No. 35/10512
 Building No. -
 Site/Location SELLAFIELD
 Department CS&A
 Discipline/Type A01
 Designer -
 Scale 1:50
 Contract No. -
 Drawing/CI Category GN

System No. -
 Plant Area -
 Plant Title -
 Clients Proj. No. -
 Clients Drg. No. -
 Part No. -
 Part Item No. -

Sellafield Ltd
 Hinton House, Birchwood Park Avenue
 Risley, Warrington
 WA3 6RN

SEAP BUILDING, CALDER
 WELFARE & OFFICE ACCOMMODATION
 ELEVATIONS

Drg. No. **0 BE 3138542**

Security Class **C**

Copyright © 2023. The design content is proprietary information for use in association with the Sellafield M&O contract. Permission to copy, or use the information for any other purpose, should be sought from the Intellectual Property Manager, Sellafield Ltd.