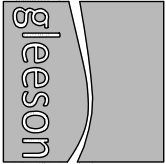


Revisions:	Date:
D. Meter positions identified, Hall window relocated.	15.03.19
C. Kitchen and Bed 3 window handed.	01.04.15
B. Verge detail note revised.	22.10.13
A. SVP tile vent added.	18.09.13

FEATURES

- * Rolled profile roof tiles.
- * Dry verge detail.
- * Exposed rafter feet at eaves.
- * Flat brick soldier arches.
- * Cottage style windows with horizontal glazing bar.
- * Brick cills.
- * Cottage style main entrance door, with dual pitch canopy over on "gallows brackets"
- * Triple band course at FF window cill level, cill omitted
- * Brick quoins to corner and render on selected plots
- * Vertical panel garage door
- * Dark brick below DPC



Client: **GLEESON HOMES
& REGENERATION**

Project: **HOUSE TYPE
DRAWING**

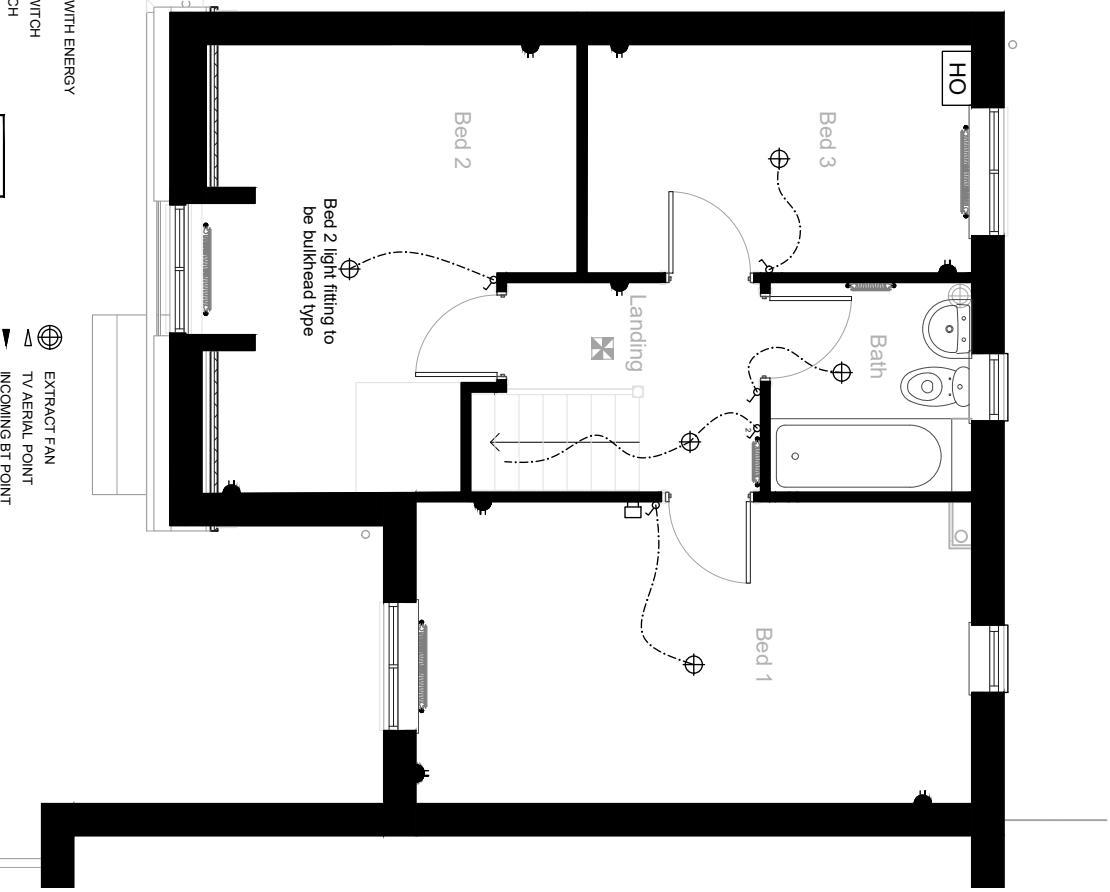
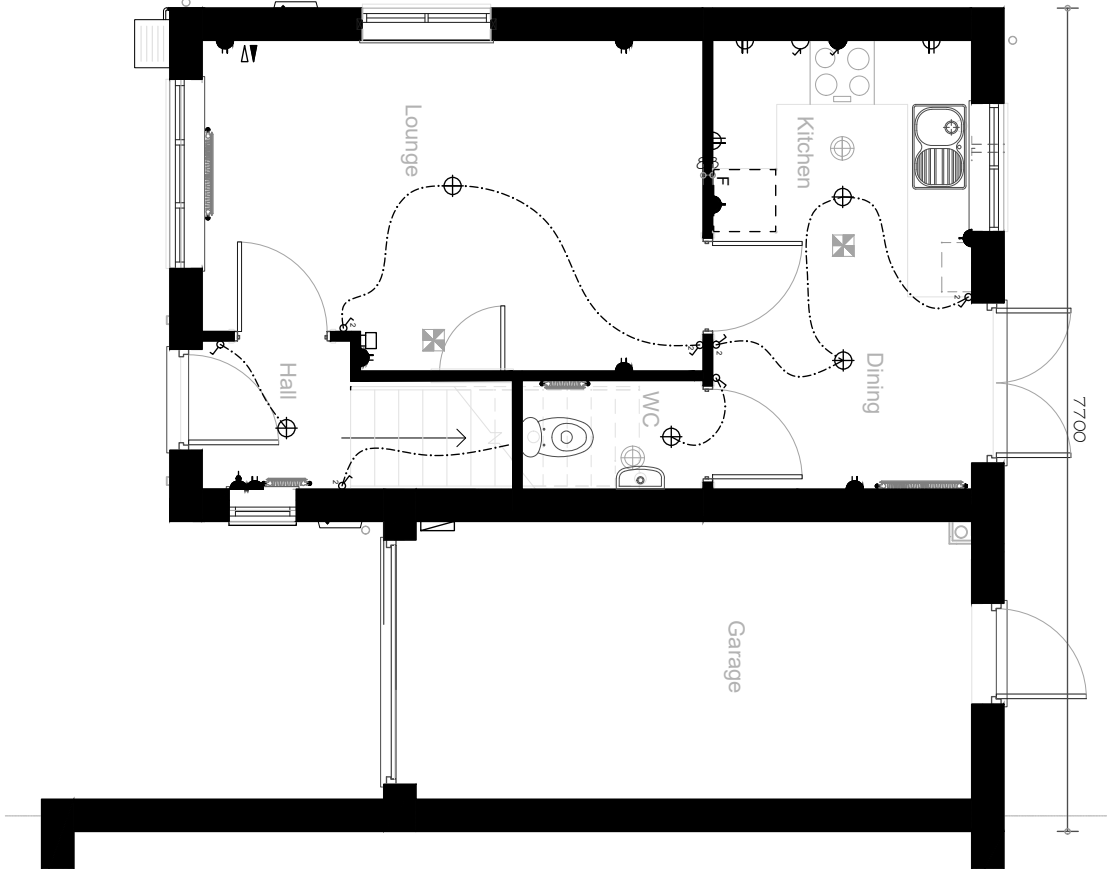
Title: **TYPE 309 PLOT 24
ELEVATIONS (RURAL 13)**

Scales: 1:100 @ A3 Cad ref.:

Drawn: Checked: Date: Dec 2010

Drawing no. **13/309 -10 Rev. D**

TYPE 309 PLOT 24
THE FERGUS



FLOOR AREA
73.24m², 788ft²

- ELECTRIC KEY**
- ⊕ CEILING LIGHT FITTED WITH ENERGY EFFICIENT BULB
 - SINGLE POLE LIGHT SWITCH
 - TWO WAY LIGHT SWITCH
 - SWITCHED SINGLE SOCKET LOW LEVEL
 - SWITCHED TWIN SOCKET LOW LEVEL
 - SWITCHED SINGLE SOCKET HIGH LEVEL
 - SWITCHED TWIN SOCKET HIGH LEVEL
 - SWITCHED FUSED SPUR LOW LEVEL
 - SWITCHED FUSED SPUR HIGH LEVEL
 - FUSED SPUR LOW LEVEL FOR FUTURE ALARM (ONLY APPLICABLE TO CODE PLOTS)
- NOT TO BE POSITIONED WITHIN 300mm OF SPARK BREAKERS

- ⊕ EXTRACT FAN
- TV AERIAL POINT
- INCOMING BT POINT
- ⊕ SMOKE/HEAT DETECTOR to BS5839-6:2004 (positioned min 300mm away from light fittings)
- CONSUMER UNIT
- RADIATOR POSITION
- HO HOME OFFICE OPTION (COMPULSORY FOR CODE) (additional double power socket and telephone point)
- SOIL AND VENT PIPE BOXING
- HEATING THERMOSTAT (dual zone control)