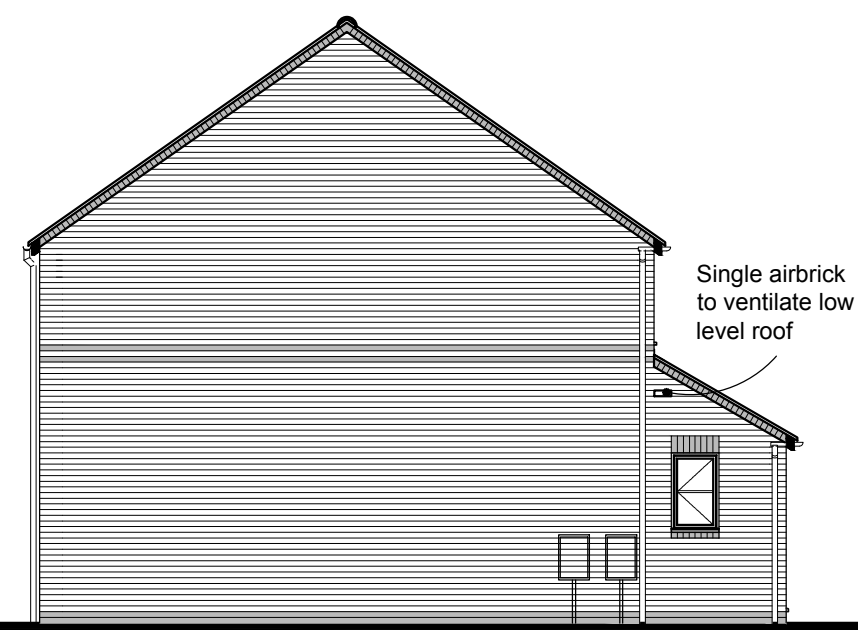


Revisions:	Date:
F. Meter positions identified.	04.02.19
E. Kitchen window handed.	27.09.18
D. Airbrick note added.	01.06.15
C. Detail removed from OPP handing. Airbrick to lower roof	12.11.14
B. Verge detail note revised.	22.10.13
A. SVP tile vent added.	18.09.13



FRONT ELEVATION



SIDE ELEVATION

- FEATURES**
- * Rolled profile roof tiles.
 - * Dry verge detail.
 - * Exposed rafter feet at eaves.
 - * Flat brick soldier arches.
 - * Cottage style windows with horizontal glazing bar.
 - * Brick cills.
 - * Cottage style main entrance door, with dual pitch canopy over on "gallows brackets"
 - * Triple band course at FF window cill level, cill omitted
 - * Brick quoins to corner and render on selected plots
 - * Vertical panel garage door
 - * Dark brick below DPC



REAR ELEVATION



Client: **GLEESON HOMES & REGENERATION**

Project: **HOUSE TYPE DRAWING**

Title: **TYPE 303 ELEVATIONS (RURAL 13)**

Scales: 1:100 @ A3 Cad ref :

Drawn: Checked: Date: July 2010

Drawing no. **13/303 -9** Rev. **F**