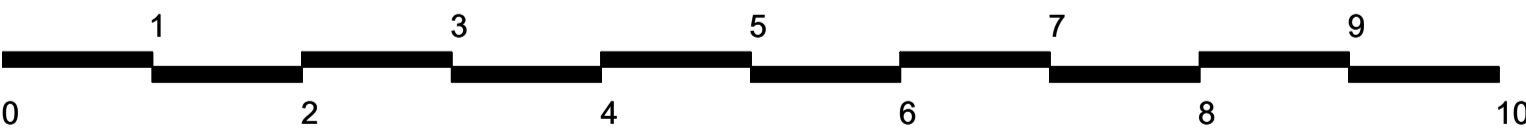
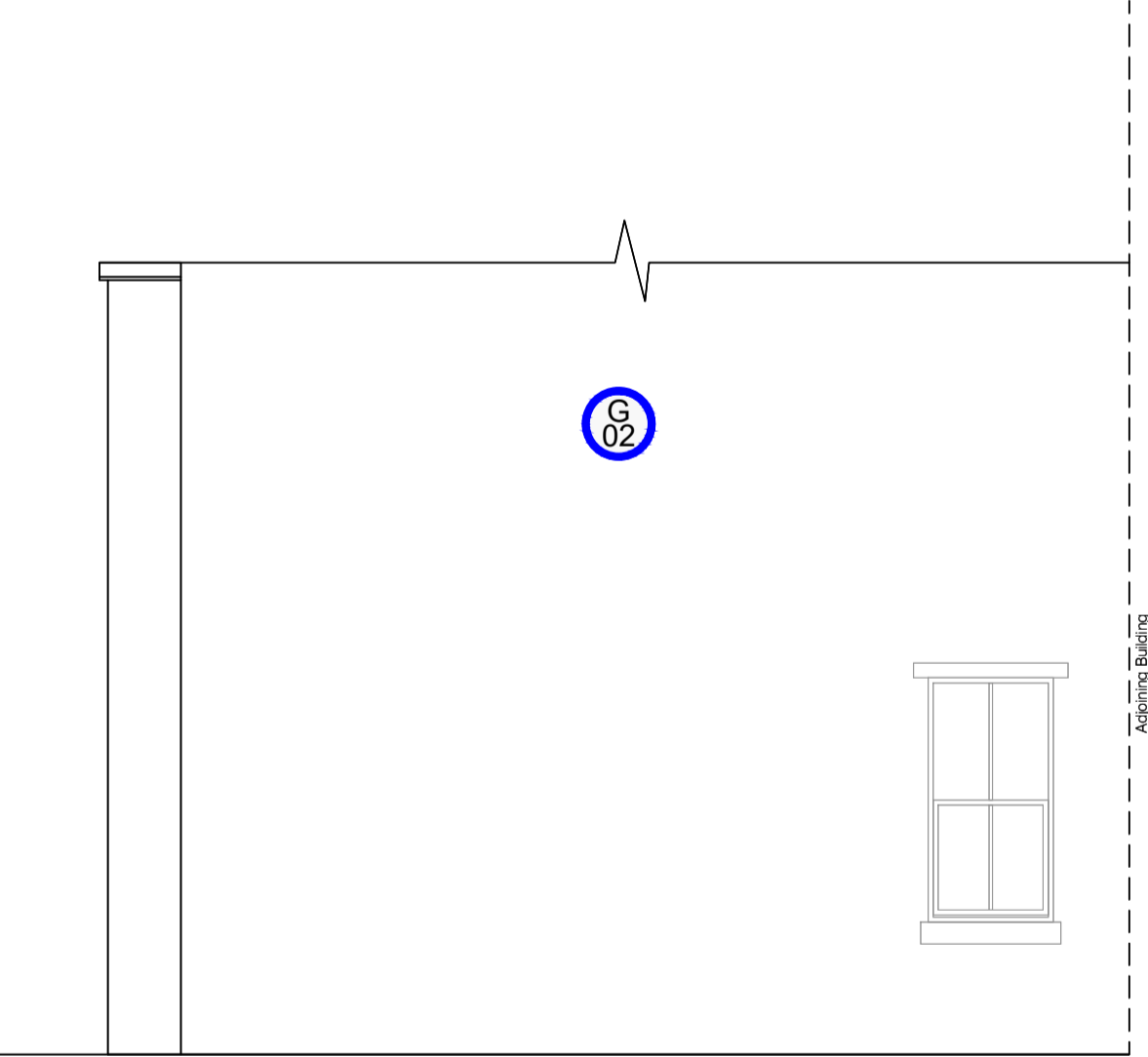



- G 01 External ATM to be removed
internal and external aperture to be overboarded
with Stainless Steel plate, finished RAL 9005 as per
existing ATM.
- G 02 All external signage to be removed, including window
vinyls. Any/all power supplies to illuminated signed
removed and terminated safely.



Scale - meters

Notes:			Rev	Date	Notes	Rev	Date	Notes
Copyright of this drawing is reserved by AXIS Architecture and issued on the condition that it is not copied, reproduced or disclosed to any third party either wholly or in part without the consent in writing of AXIS Architecture.								
 RESIDUAL RISK Wherever possible unnecessary risk is designed out of these proposals. Where residual risk remains this is assessed and identified on the relevant drawings with this symbol. Refer to the note and the relevant measures in the Health + Safety documentation								

Client Corporate Real Estate		Project Whitehaven ----				Title Proposed Elevations Front Elevation		
Status PLANNING		Scale A1 Custom	A3 1:101	Date -	Drawn -	Checked -	Job No. 26700-3880-001-E1-PL1	Revision -
AXIS Architecture and Design Ltd, Talbot Chambers, 2-6 North Church Street, Sheffield, S1 2DH.		tel: +44(0)114 2490944 fax: +44(0)114 2490966 www.axis-architecture.com designed@axis-architecture.com						