

A3

A

B

C

D

E

F

NOTES:-

.SIGN 1:-

CONTINUOUS ALUMINIUM BACKING FASCIA TO WRAP AROUND FRONT & SIDE ELEVATIONS, COMPRISING OF A 3mm THK ALUMINIUM FASCIA WITH 28mm FOLDED RETURNS, SECURED TO WALL WITH INTERNAL 50x25x3mm ALI FIXING RAILS. BACKING FASCIA TO HAVE PPC PINK FINISH, RAL 3015.

.SIGN 2:-

1 HALO ILLUMINATED BADGE INTERNALLY SECURED TO BACKING FASCIA COMPRISING OF THE FOLLOWING, EXTRUDED ALUMINIUM PERIMETER FRAME & FOLDED 3mm THK ALUMINIUM FACE PANEL.

EXTRUDED ALUMINIUM FRAME TO HOUSE WHITE LED'S & 050 OPAL ACRYLIC DIFFUSER PROVIDING HALO ILLUMINATION AROUND ENTIRE BADGE PERIMETER, FRAME TO HAVE PPC FINISH TO MATCH BACKING FASCIA, RAL 3015

3mm THK ALUMINIUM BADGE FACE PANEL TO HAVE STENCIL CUT / PUSH THRU HALO ILLUMINATED, ACRYLIC 'F' LOGO & DARK WOOD EFFECT VINYL APPLIED TO FACE, WITH WHITE VINYL 'BUILDING SOCIETY' TEXT.

3M WOOD EFFECT VINYL REF:- 3M WG-695.

REFER TO SIGNAGE DRAWING REF 25432 ALSO

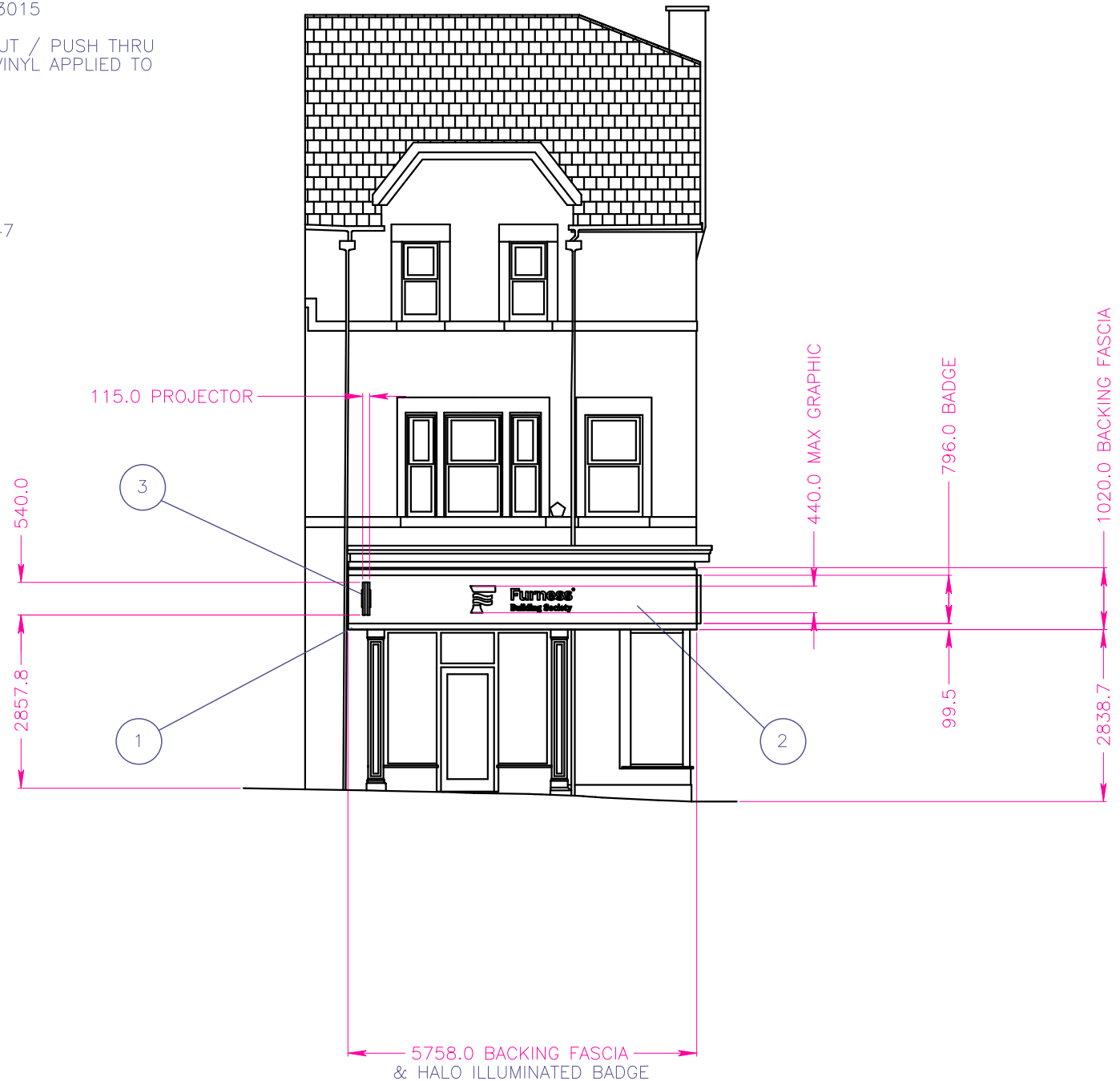
2 .SIGNS 3:-

ILLUMINATED PROJECTING SIGNS AS PER DRAWING REF:- 25447

3

4

5



SCALE 1:100

THIRD ANGLE PROJECTION  
DIMENSIONS IN MILLIMETRES

DRAWING APPROVAL STATUS	
STATUS A	BY DATE
THIS DRAWING HAS BEEN CHECKED AND CONFORMS TO DESIGN INTENT	
STATUS B	BY DATE
APPROVAL NOT REQUIRED	
STATUS C	BY DATE
UNCHECKED, NOT TO BE USED FOR MANUFACTURE	

CLIENT  
FURNESS BUILDING SOCIETY

DETAIL  
FRONT ELEVATION DETAILS

ASSEMBLY / SITE  
6 MARKET SQUARE, MILLOM, LA184HZ

MATERIAL  
SEE DRG

SCALE	DRAWN BY	DATE
1 : 100 @ A3	M.J.S	12/08/2023

DESIGN COPYRIGHT ©

Wood & Wood International Signs Ltd  
Heron Road  
Sowton Estate  
Exeter EX2 7LX  
Tel: 01392 444501  
Fax: 01392 252358

No part of this drawing & the design contained herein may be reproduced without the written consent of Wood & Wood International Signs Ltd

DRAWING NO.	REV
25434	A
PAGE 1/2	

A3

A

B

C

D

E

F

NOTES:-

.SIGN 1:-

CONTINUOUS ALUMINIUM BACKING FASCIA TO WRAP AROUND FRONT & SIDE ELEVATIONS, COMPRISING OF A 3mm THK ALUMINIUM FASCIA WITH 28mm FOLDED RETURNS, SECURED TO WALL WITH INTERNAL 50x25x3mm ALI FIXING RAILS. BACKING FASCIA TO HAVE PPC PINK FINISH, RAL 3015.

.SIGN 2:-

1 HALO ILLUMINATED BADGE INTERNALLY SECURED TO BACKING FASCIA COMPRISING OF THE FOLLOWING, EXTRUDED ALUMINIUM PERIMETER FRAME & FOLDED 3mm THK ALUMINIUM FACE PANEL.

EXTRUDED ALUMINIUM FRAME TO HOUSE WHITE LED'S & 050 OPAL ACRYLIC DIFFUSER PROVIDING HALO ILLUMINATION AROUND ENTIRE BADGE PERIMETER, FRAME TO HAVE PPC FINISH TO MATCH BACKING FASCIA, RAL 3015

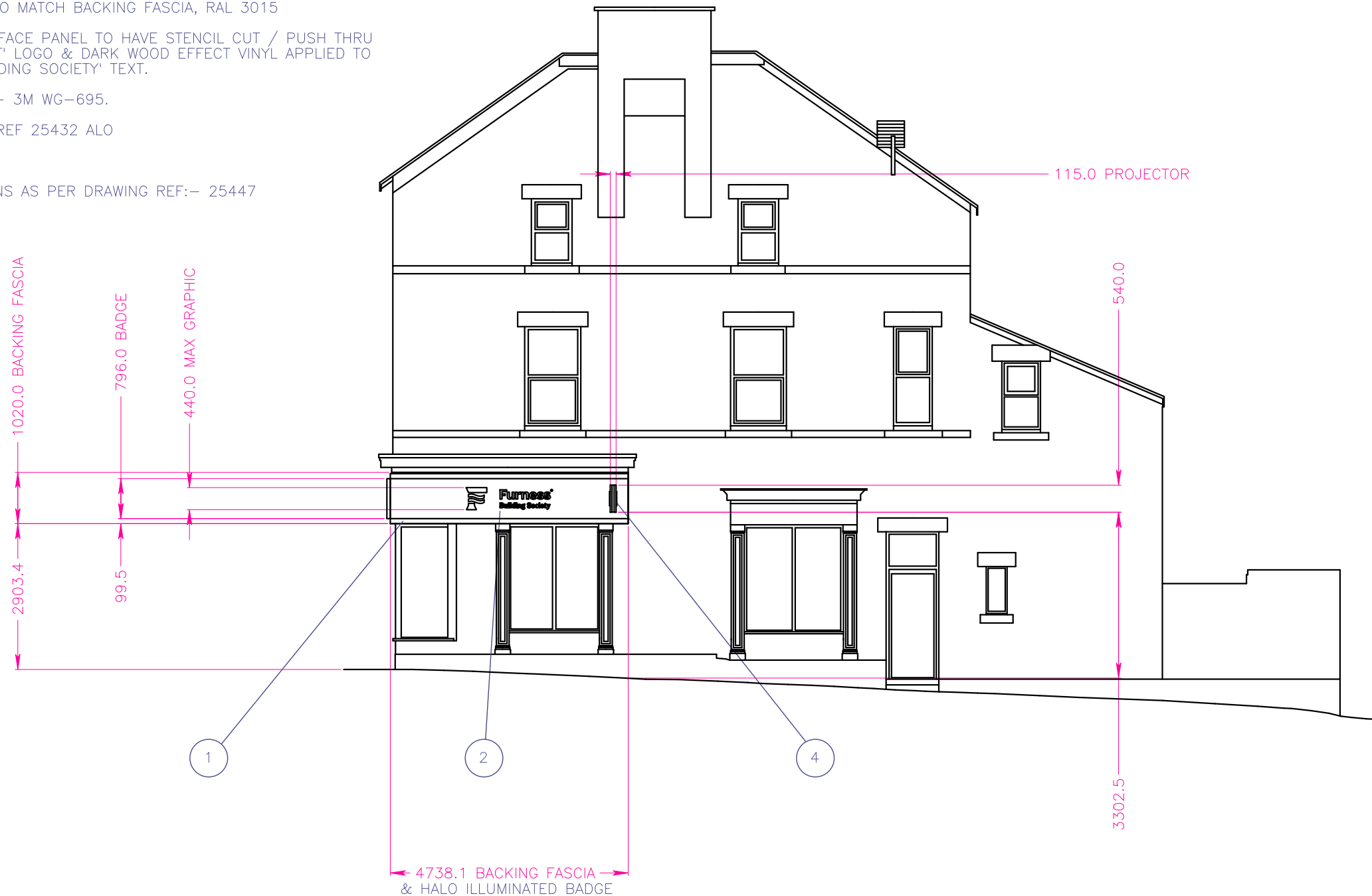
3mm THK ALUMINIUM BADGE FACE PANEL TO HAVE STENCIL CUT / PUSH THRU HALO ILLUMINATED, ACRYLIC 'F' LOGO & DARK WOOD EFFECT VINYL APPLIED TO FACE, WITH WHITE VINYL 'BUILDING SOCIETY' TEXT.

3M WOOD EFFECT VINYL REF:- 3M WG-695.

REFER TO SIGNAGE DRAWING REF 25432 ALO

2 .SIGNS 4:-

ILLUMINATED PROJECTING SIGNS AS PER DRAWING REF:- 25447



THIRD ANGLE PROJECTION  
DIMENSIONS IN MILLIMETRES

DRAWING APPROVAL STATUS	
STATUS A	BY
THIS DRAWING HAS BEEN CHECKED AND CONFORMS TO DESIGN INTENT	DATE
STATUS B	BY
APPROVAL NOT REQUIRED	DATE
STATUS C	BY
UNCHECKED, NOT TO BE USED FOR MANUFACTURE	DATE

CLIENT  
FURNESS BUILDING SOCIETY

DETAIL  
SIDE ELEVATION DETAILS

ASSEMBLY / SITE  
6 MARKET SQUARE, MILLOM, LA184HZ

MATERIAL  
SEE DRG

SCALE	DRAWN BY	DATE
1 : 100 @ A3	M.J.S	12/08/2023

DESIGN COPYRIGHT ©

Wood & Wood International Signs Ltd  
Heron Road  
Sowton Estate  
Exeter EX2 7LX  
Tel: 01392 444501  
Fax: 01392 252358

No part of this drawing & the design contained herein may be reproduced without the written consent of Wood & Wood International Signs Ltd

DRAWING NO.	REV
25434	A
PAGE 2/2	

METRES



SCALE 1:100