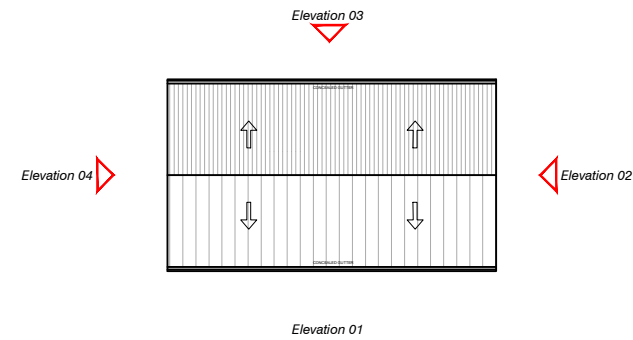


This drawing is to be read in conjunction with all other relevant technical information, statutory approvals, specifications and third party information. Do not scale this drawing. Use only dimensions provided. All dimensions and levels to be checked on site and all discrepancies must be reported to the drawings author immediately. Responsibility cannot be accepted for alteration and/or deviation from this design without the prior acknowledgement of the drawings author. Any commercial decisions relating to this information must make due allowance for dimensional and area variation resulting from the design development and construction processes as well as the requirements of statutory authorities. This drawing is to be used only for the purposes indicated. This drawing is copyright and the property of Northall Associates Ltd (NMA) and must not be reproduced without prior written agreement. Any Intellectual Property Rights (IPR) relating to the drawing(s) described in this drawing belong to the originating designer and, where it is not NMA's design, no credit for the design or IPR is sought by this drawings author.

MATERIALS

- | | | | |
|---|---|---|---|
| 1 | Corrugated steel cladding
(Colour: Black) | 7 | Painted signage
(Colour: White) |
| 2 | Corrugated steel roof (to match A1) with hidden gutters; laid to falls
(Colour: Black) | 8 | PPC aluminium framed rooflight
(Frame Colour: Dark Grey / Black) |
| 3 | PPC aluminium framed double glazed window
(Frame Colour: Dark Grey / Black) | 9 | PPC aluminium framed roller shutter goods door
(Frame Colour: Dark Grey / Black) |
| 4 | PPC aluminium framed glazed double doors with side screens
(Frame Colour: Dark Grey / Black) | | |
| 5 | Fire escape door with PPC finish -
Colour: Dark Grey | | |
| 6 | Concealed gutter | | |

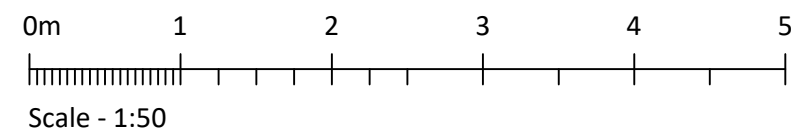


NOTES

1. Read in conjunction with referenced information within the Architectural Tender Package along with that from supporting consultants and specialists as referred to in tender/contract documents.
2. Any discrepancies within the documentation to be brought to the attention of the Contract Administrator/Employers Agent for clarification.
3. All construction work related to the information presented in this drawing is to comply with statutory requirements (Building Regulations and related Planning Permissions), British Standards, Relevant Codes and Good Practice.
4. Drawings based on survey information provided by Paragon Surveys, the accuracy of which has not been checked. All dimensions and levels are to be confirmed on site prior to procuring any materials, fabrication/manufacturer's production information or commencement of works on site.
5. This drawing has been released as part of a 2 stage Design and Build procurement process and illustrates 'Design Intent' on which to base further design development and construction information. Significant deviation from the standards set in this drawings along with other relevant technical information will not be accepted.



PROPOSED RETAIL UNIT - ELEVATION 3



00	Planning Issue	HD	IG	30/03/2021
Rev	Description	By	Chk	Date