

MATERIALS

- 1

Corrugated steel cladding  
(Colour: Black)
- 2

Corrugated steel roof (to match A1) with hidden gutters; laid to falls  
(Colour: Black)
- 3

PPC aluminium framed double glazed window  
(Frame Colour: Dark Grey / Black)
- 4

PPC aluminium framed glazed double doors with side screens  
(Frame Colour: Dark Grey / Black)
- 5

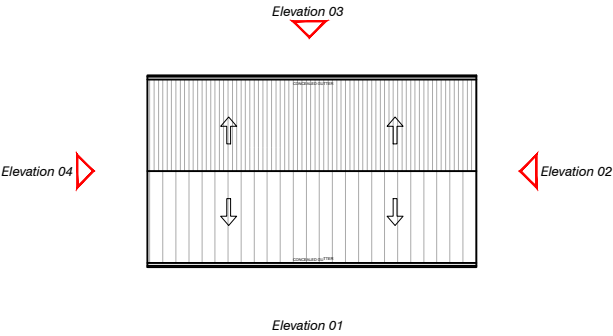
Fire escape door with PPC finish -  
Colour: Dark Grey
- 6

Concealed gutter
- 7

Painted signage  
(Colour: White)
- 8

PPC aluminium framed rooflight  
(Frame Colour: Dark Grey / Black)
- 9

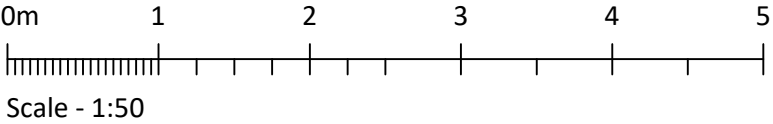
PPC aluminium framed roller shutter goods door  
(Frame Colour: Dark Grey / Black)



NOTES

- Read in conjunction with referenced information within the Architectural Tender Package along with that from supporting consultants and specialists as referred to in tender/contract documents.
- Any discrepancies within the documentation to be brought to the attention of the Contract Administrator/Employers Agent for clarification.
- All construction work related to the information presented in this drawing is to comply with statutory requirements (Building Regulations and related Planning Permissions), British Standards, Relevant Codes and Good Practice.
- Drawings based on survey information provided by Paragon Surveys, the accuracy of which has not been checked. All dimensions and levels are to be confirmed on site prior to procuring any materials, fabrication/manufacturer's production information or commencement of works on site.
- This drawing has been released as part of a 2 stage Design and Build procurement process and illustrates 'Design Intent' on which to base further design development and construction information. Significant deviation from the standards set in this drawings along with other relevant technical information will not be accepted.

PROPOSED RETAIL UNIT - ELEVATION 2



00	Planning Issue	HD	IG	30/03/2021
Rev	Description	By	Chk	Date