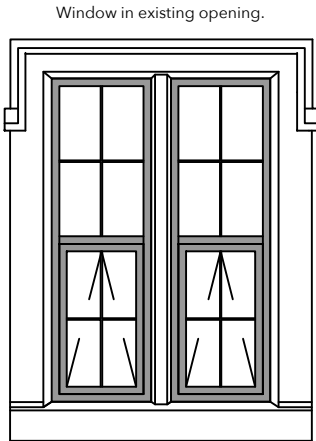


WINDOW TYPE 1 - FIXED LIGHTS (6No.)
(To existing projection1 and 2)

2 windows sitting behind existing stone or metal column. Stone surround to be repaired by specialist contractor. Powdercoated Aluminium. Colour: Black Glazing: Double glazed

Clear safety glazing as manufactures details. 1 No. window to be a faux window.W31.

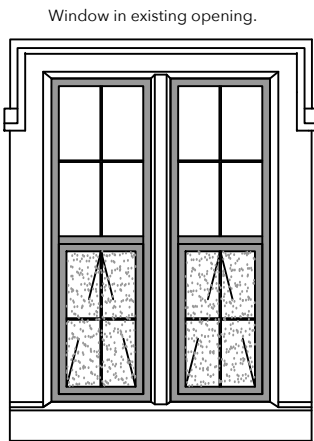
3 windows to projection 1 are part faux windows. tbc



WINDOW TYPE 2 - CLEAR GLAZING (53 NO.)

2 openable windows sitting behind existing stone or metal column. Stone surround to be repaired by specialist contractor. Powdercoated Aluminium. Colour: Black Glazing: Double glazed

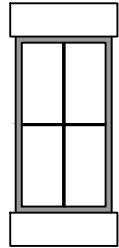
Clear safety glazing as manufactures details. New reinstated window stone surround to two openings to north elevation



WINDOW TYPE 3 - FROSTED GLAZING (To WC's) (2No)

2 openable windows sitting behind existing stone or metal column. Stone surround to be repaired by specialist contractor. Powdercoated Aluminium. Colour: Black Glazing: Double glazed

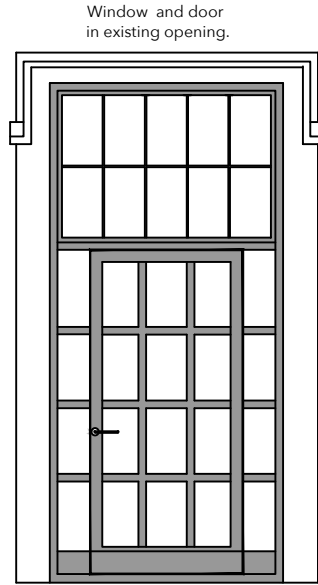
Clear safety glazing as manufactures details.



WINDOW TYPE 4 - CLEAR GLAZING (1 No)

Fixed window. Stone surround to be repaired by specialist contractor. Powdercoated Aluminim. Colour: Black Glazing: Double glazed

Clear safety glazing as manufactures details to bottom half of window / specification.tbc



WINDOW TYPE 5 - WINDOW ABOVE DOOR AND SIDE LIGHTS (to patio area) (1 No.)

Fixed window above door and side lights to new door. Stone surround to be repaired by specialist contractor. Aluminium window. Colour: Black Glazing: Double glazed Clear glazing as manufactures details /specification.

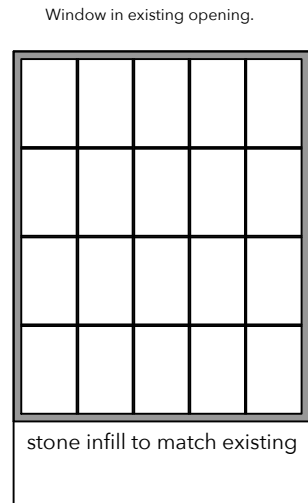
New secure aluminium external door to patio area. Door: Powdercoated aluminim door Colour: Black Glazing: Double glazed



ROLLER SHUTTER (TO BIN AREA) (1 No.)

New metal roller shutter to bin area. Size TBC. Check size on site.

Colour: Black

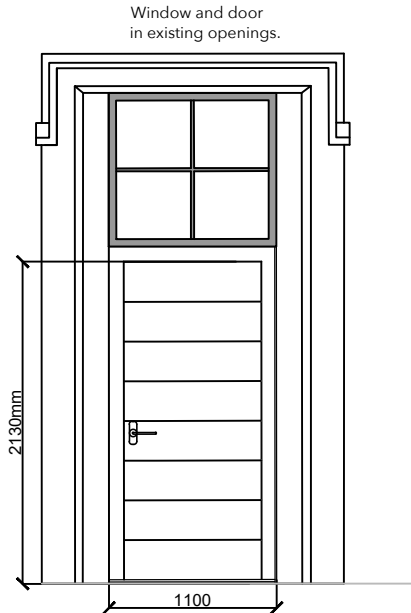


LARGE WINDOW TYPE 6 - 3 NO.
(Possibly variation in size, check on site)

Fixed window with 5 panels horizontally. Stone surround to be repaired by specialist contractor.

Powdercoated aluminim window Colour: Black Glazing: Double glazed

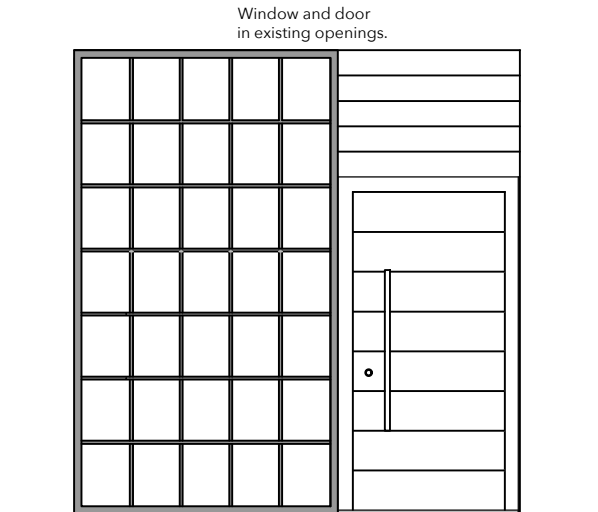
Clear safety glazing as manufactures details.



WINDOW TYPE 7 - (3 NO.) Above new rear doors on east elevation including fire escape on first floor.

Stone surrounding doors to be repaired and reconfigured as necessary by specialist contractor.

Powdercoated aluminim window above new secure aluminium door. The window above the door may vary in size on the first floor on the east elevation.

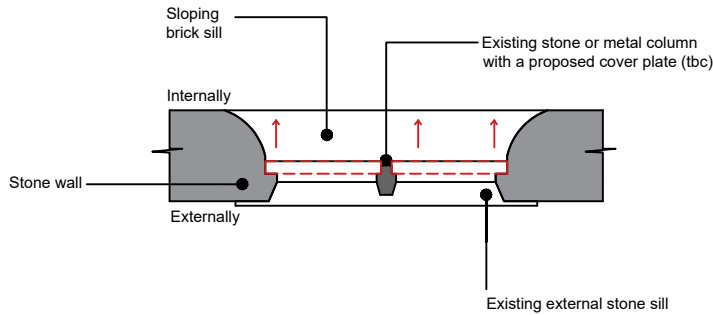


WINDOW TYPE 8 - (1 NO.) and 1 New entrance door. To main entrance.

Fixed window. Any stone surround in existing opening to be repaired by specialist contractor.

Powdercoated aluminim window Colour: Black Glazing: Double glazed

New secure aluminium external entrance door.



SCHEMATIC TYPICAL WINDOW PLAN