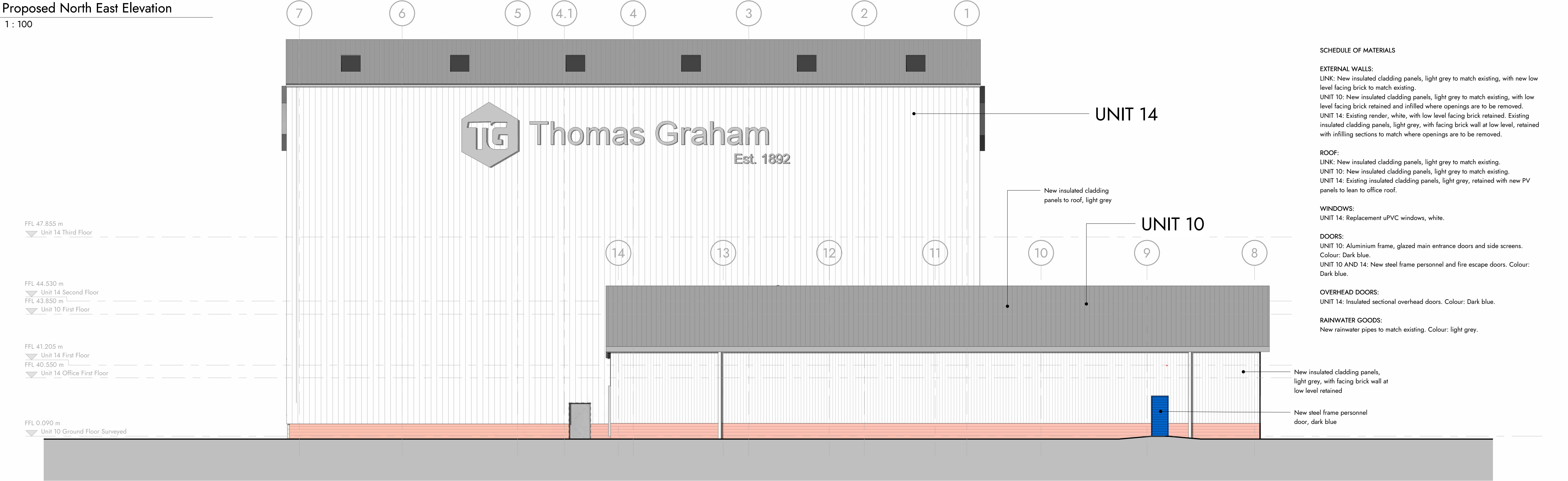


Proposed North East Elevation
1 : 100



Proposed North West Elevation
1 : 100

SCHEDULE OF MATERIALS

EXTERNAL WALLS:

LINK: New insulated cladding panels, light grey to match existing, with new low level facing brick to match existing.
UNIT 10: New insulated cladding panels, light grey to match existing, with low level facing brick retained and infilled where openings are to be removed.
UNIT 14: Existing render, white, with low level facing brick retained. Existing insulated cladding panels, light grey, with facing brick wall at low level, retained with infilling sections to match where openings are to be removed.

ROOF:

LINK: New insulated cladding panels, light grey to match existing.
UNIT 10: New insulated cladding panels, light grey to match existing.
UNIT 14: Existing insulated cladding panels, light grey, retained with new PV panels to lean to office roof.

WINDOWS:

UNIT 14: Replacement uPVC windows, white.

DOORS:

UNIT 10: Aluminium frame, glazed main entrance doors and side screens. Colour: Dark blue.
UNIT 10 AND 14: New steel frame personnel and fire escape doors. Colour: Dark blue.

OVERHEAD DOORS:

UNIT 14: Insulated sectional overhead doors. Colour: Dark blue.

RAINWATER GOODS:

New rainwater pipes to match existing. Colour: light grey.

Revision	Description	Drawn	Approved	Date
----------	-------------	-------	----------	------

Drawing Proposed N. East & N. West Elevations		Status PL - Planning	
Project Units 10 & 14, Bridge End Industrial Estate	Client name Thomas Graham & Sons Ltd	RIBA stage 3-Spatial Coordination	
Date 06/12/23	Drawn by LC	Scale @ A1 1 : 100	Revision
Drawing number 23034-PL11			

Proposed N. East & N. West Elevations Units 10 & 14, Bridge End Industrial Estate

0m 2m 4m 6m 8m 10m
VISUAL SCALE 1:100 @ A1

This drawing is to be read in conjunction with all related drawings. Dimensions must be checked and verified on site before commencing work or producing shop drawings. The originator must be notified immediately of any discrepancy. This drawing is copyright and remains the property of Architects Plus, and may not be reproduced in any way without written consent from Architects Plus.

Victoria Galleries, Viaduct House, Victoria Viaduct, Carlisle, Cumbria, CA3 8AN | ap@architectsplus.co.uk | 01228 515144

WWW.ARCHITECTSPUS.CO.UK

Registered Office
Victoria Galleries, Viaduct House,
Victoria Viaduct, Carlisle, Cumbria, CA3 8AN

Company Registration
Architects Plus (UK) Limited
Registered in England no. 4221140