

1. **Handling**

a) Unit Volume / Weight:

Part	Vol (m³)	Weight (T)	Wt + 5% (T)
100 MHW	0.76	1.92	2.02

Weight is based on 2.6 T/m³
+ 5% is recommended for sizing lifting equipment.

b) All lifting points shall be used as specified below:

System	Total Qty	Reference	Capacity
Thrusting Sockets and Loops	3	BS 25	2T

c) Lifting Loops can be bought from FP McCann
d) Unit to be lifted as per lifting diagram

2. **Concrete**

a) Mix: red Wet Cast Mix
b) Lifting strength based on 2 cubes = 15N/mm²
c) Characteristic 28 day cube strength = 50 N/mm²
d) Concrete provides Design Chemical Class 4 (DC4) to Special Digest 1, Table F2.

3. **Reinforcement**

a) Reinforcement to BS4449
b) Scheduling, dimensioning, bending and cutting to BS8666.
c) Cage to be tack welded and or tied with 17 gauge annealed tying wire.

4. **Manufacture**

a) Manufactured to BS EN 13369: 2013
b) Tolerances to BS EN 13369: 2013, Clause 4.3.1.1
c) Finishing:

Class	Underside	Soffit	Sides
	Wood Finish	A	A

d) Marking: Units shall be indelibly marked to show:

- unit reference
- cast date
- contract number or name
- unit weight

5. **Design**

a) Concrete design to EC2
b) Design Loading: Soil density = 20kN/m³, Surcharge of 10kPa & h=0.72
c) F.P. McCann have designed the concrete units only, the stability of the support conditions should be checked by the overall scheme designer.
d) Design Life: >100years.

Min Cover	Cover block size (mm)	Min cover (mm)	Max cover (mm)
All faces	35	30	40

Exposure			
All faces	XC3/4	XD1	XF4

NOTE

THIS PRINT AND ANY DESIGN THEREON IS THE PROPERTY OF BECKWITH & HANLON CONSULTING ENGINEERS LIMITED AND IS TO BE RETURNED ON REQUEST. IT IS TO BE USED ONLY FOR THE PURPOSE FOR WHICH IT WAS EXPRESSLY LOANED AND IS NOT TO BE COPIED IN ANY MANNER, NOR IS INFORMATION TAKEN THEREFROM TO BE TRANSMITTED OR PASSED TO OTHERS.

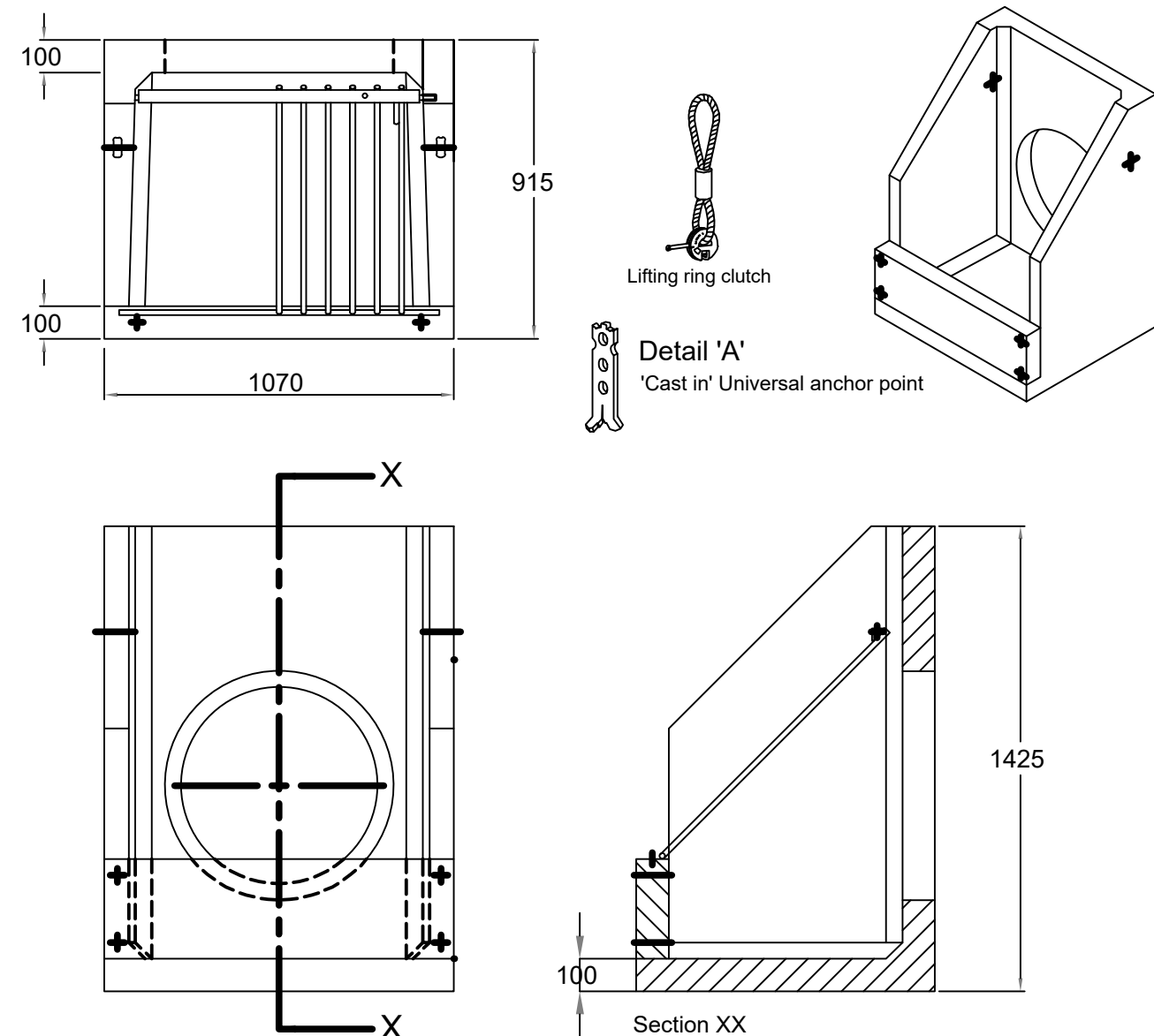
DO NOT SCALE OFF THIS DRAWING.

DO NOT TAKE DIGITAL DIMENSIONS OFF THIS DRAWING.

GENERAL NOTES

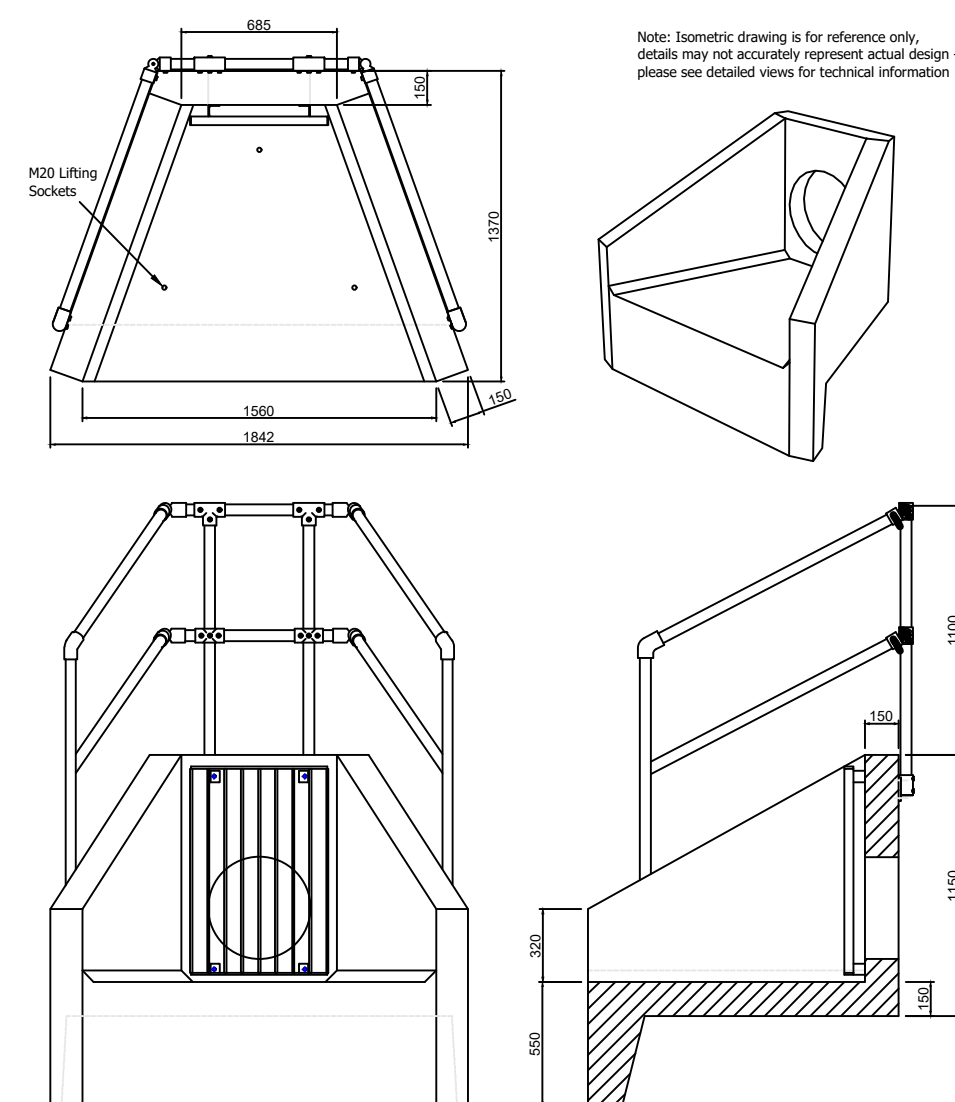
1. THIS DRAWING IS TO BE READ IN CONJUNCTION WITH BECKWITH AND HANLON DRG. 23-034-200 SERIES DRAWINGS

Althon Althon 1PHDST A Silt trap



HEADWALL S49 AND S50

Althon H8CA Headwall Close Coupled Grating 3 Sided Kee Klamp



HEADWALL S29, S37 AND S38

P2	MINOR TEXT AMENDMENT	JH	JM	01/05/25
REV	FIRST ISSUE	JH	JM	17/01/25
	AMENDMENT	BY	CKD	DATE

CLIENT

JOHN SWIFT HOMES LTD.

PROJECT

SUMMERGROVE WHITEHAVEN

DRAWING TITLE

SUDS DETAILS SHEET 2

Beckwith & Hanlon Consulting Engineers Limited

F22 Willow Court, Marquis Court, Team Valley Trading Estate, Gateshead, NE11 0RU

tel: 0191 273 7582

SCALE	BY	CHECKED	DATE
NOT TO SCALE	JH	JM	DEC. '24

DRAWING NO.

23-034-238

STATUS	REV	P2
PRELIMINARY	SIZE	A1