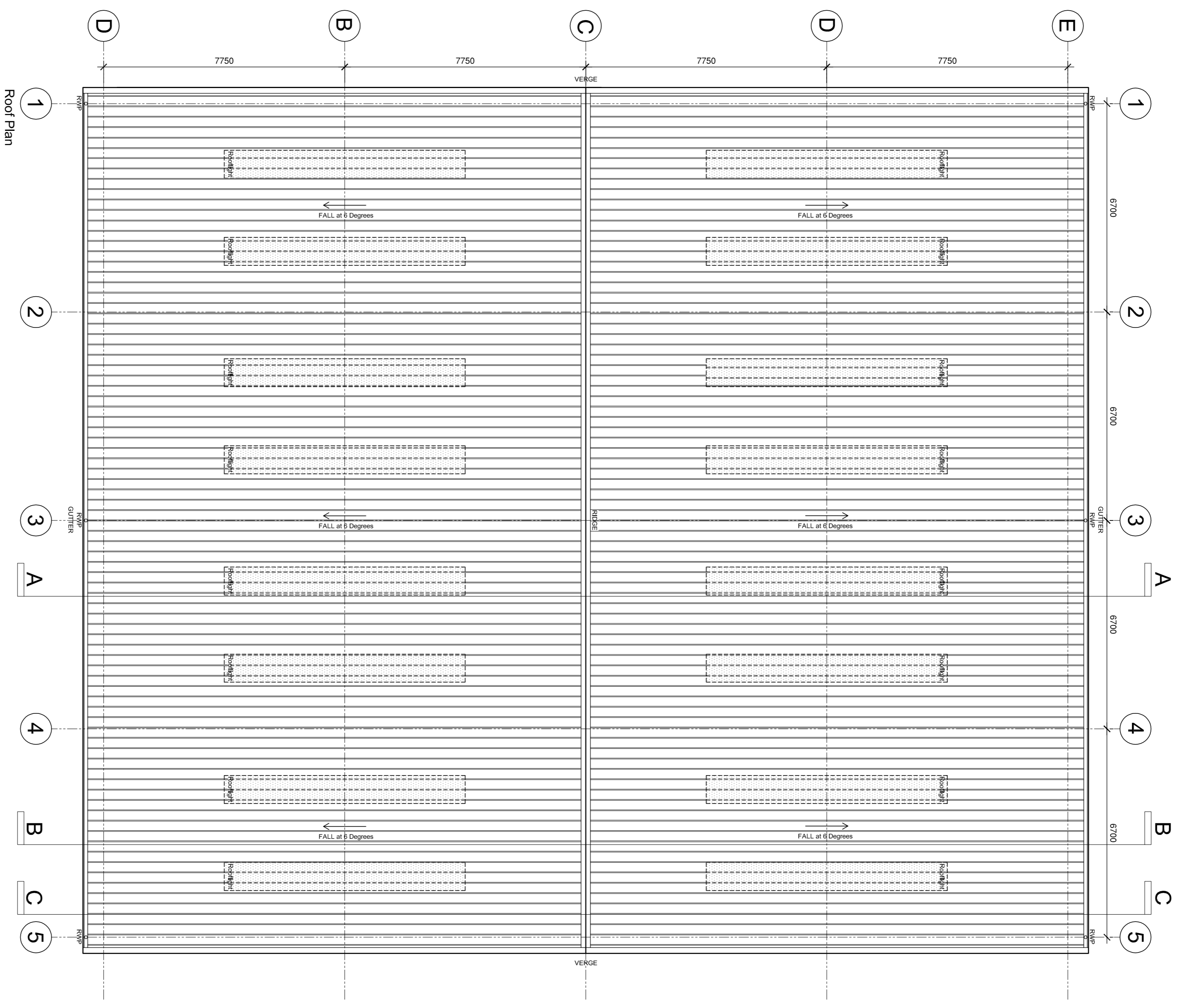
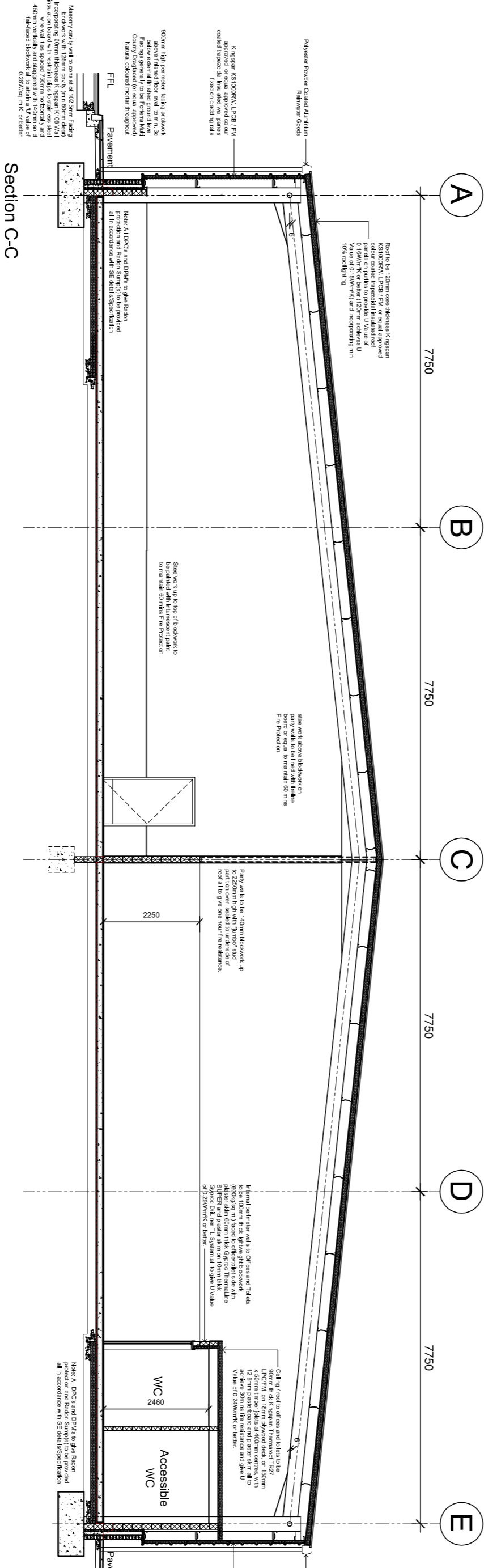
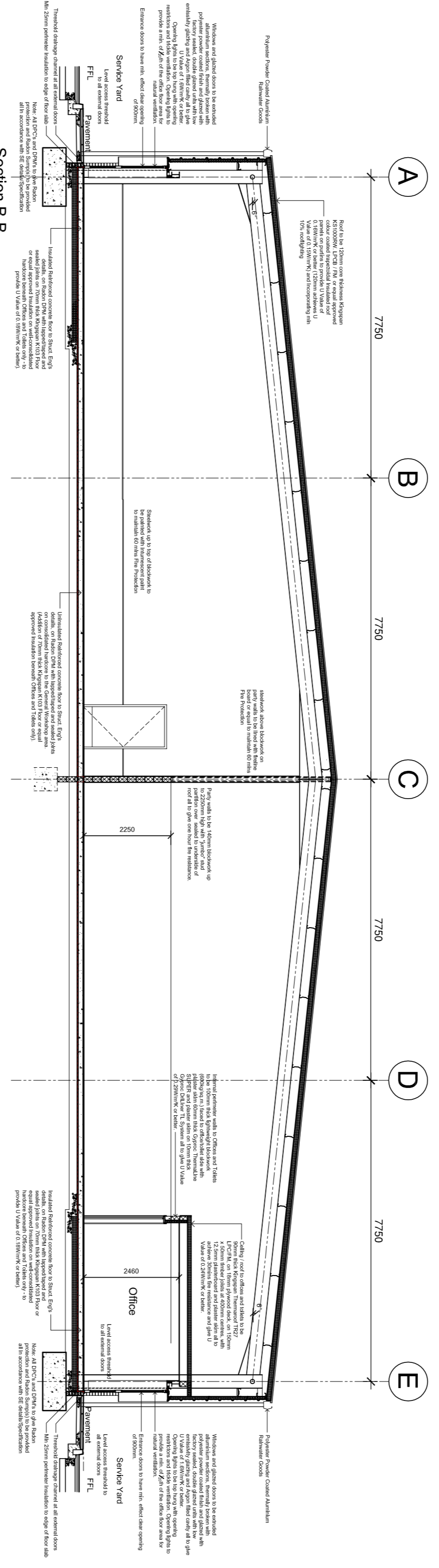
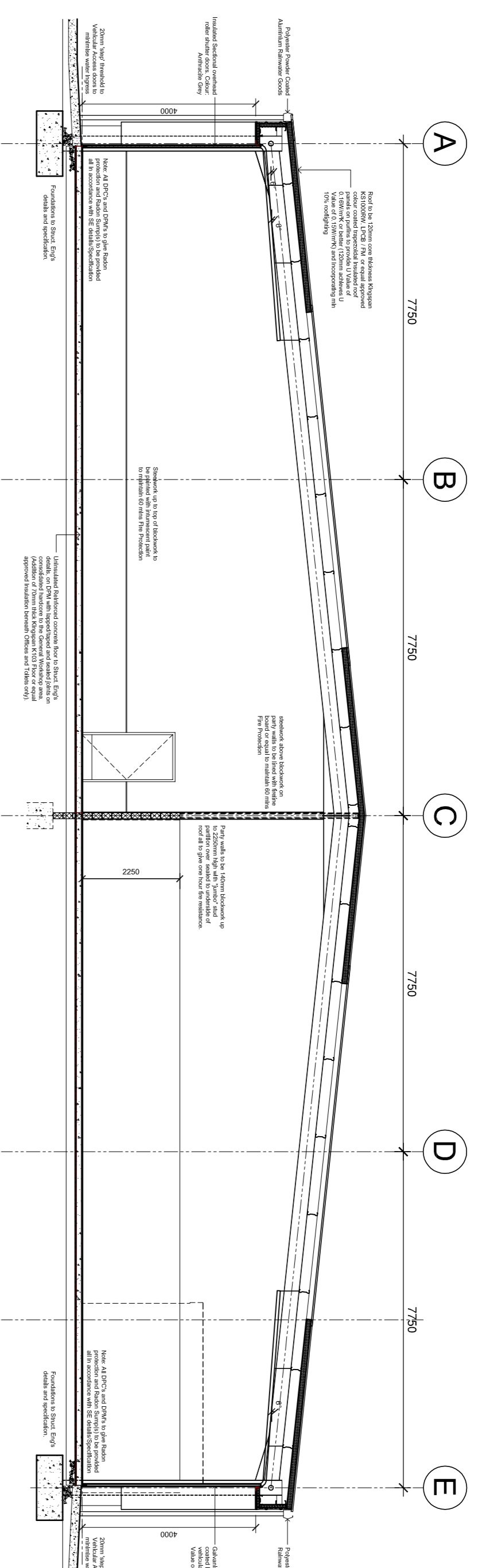


Notes: This Drawing is the copyright of Paddock Johnson Partnership Limited and may not be used without prior written consent. All dimensions are in millimetres unless otherwise stated. Due to inaccuracies of scanning, scanned images should not be scaled.

REV DATE DESCRIPTION
 + REV DATE DESCRIPTION
 A 21.06.23 Additional Sections added
 B 11.07.23 Whole Block narrowed and deepened to accommodate electric cable route and rearing structure

BY: SD
 SD



All insulation to be GFC/HCFC-free with zero Ozone Depletion Potential.
 All Cladding details to comply with Kingspan Enhanced details.

MATERIAL/COLOUR KEY

- Steel paintwork - Mattin Grey
- Roof cladding - Kingspan KS100RIV Insulated Roof Panel - Colour Anthracite Grey
- Gutters, Fascias & Verges - Colour Anthracite Grey
- Rainwater pipes - Colour Anthracite Grey
- Wall cladding - Kingspan KS100RIV Insulated Wall Panel (UPCB Approved) or equal - Colour Anthracite Grey at high level and Mattin Grey at low level.
- Mattin Grey - Colour - so match wall cladding Anthracite Grey / Brickwork - Red Facing's (Folens County Mulli Dryglazed - TBA) and taken down to min 3c below DPC.
- Moler - Natural TBA
- Paintwork - Colour Anthracite Grey
- Entrance doors - Colour Anthracite Grey
- Personnel doors - Colour Anthracite Grey
- Blanking/lookalike panels - Colour TBA
- Windows - Extruded Aluminium window sections - Colour Anthracite Grey
- Cladding - Colour TBA
- Cladding - Colour TBA

CRITICAL DOOR DIMENSIONS

- Internal Doors Minimum effective clear width 800mm
- Entrance Doors Minimum effective clear width 900mm
- Fire Exit Doors Minimum effective clear width 800mm
- All vision panels to have minimum egress of visibility between 500mm to 800mm and 1150mm to 1500mm.

U VALUES

- Roof 0.18W/mK
- Wall 0.29W/mK
- Floor (below heated Offices and WC's only) 0.18W/mK
- Floor (below unheated Warehouse Space only) No U Value
- Rooflights 2.2W/mK
- Personnel Doors 1.8W/mK
- Highways entrance Doors 3.0W/mK
- Vehicle Access Doors 1.3W/mK

NOTE - Notwithstanding the above stated U Values, these are a minimum required by the Building Standards and actual values required Actual values are to be as required by SBEM Calculations.

© Crown copyright and database rights 2020 OS 1000060148
 CLIENT: Northern Trust
 PROJECT: Sneekycoet Industrial Estate Whitehaven
 DRAWING NUMBER: 22123-PJA-83-ZZ-DR-A-3001-B
 DRAWING TITLE: Block 3 GA Roof Plan & Sections
 STATUS: PLANNING

Scale: 1:100 @ A1
 Date: 28.04.23
 Checked: PP

PADDOCK JOHNSON
 Studio 2, The Licham, Birtst Street, Port Sunlight, Merseyside, CH24 4JJ
 0151 843 9324
 www.paddockjohnson.com
 Paddock Johnson Partnership Limited Registered in England 15707486, No. 06862275