

**Notes:** This Drawing is the copyright of Paddock Johnson Partnership Limited and may not be used without prior written consent. All dimensions are in millimetres unless otherwise stated. Due to inaccuracies of scanning, scanned images should not be scaled.

REV.	DATE	DESCRIPTION	BY:
A	15.06.23	Various amendments following receipt of End-Users	SD
B	20.06.23	Configuration of door DE03 revised following client	SD
C	03.08.23	Various amendments to avoid clash with HV Cables	SD

All insulation to be GFC/HFC-C free with zero ozone depletion potential.  
 All Cladding details to comply with Kingspan Enhanced details

**MATERIAL/COLOUR KEY**

- Steel framework - Main Grey (BS 18 25)
- Roof cladding - Kingspan K5100RHW Insulated Roof Panel (LPCB Approved) or equal - Colour: Glossing Grey (BS 10 A 03)
- Roof cladding - Kingspan K5100RHW Insulated Roof Panel (LPCB Approved) or equal - Colour: Anthracite Grey (RAL 7016)
- Wall cladding - Kingspan K5100RHW Insulated Wall Panel (LPCB Approved) or equal - Colour: Anthracite Grey (RAL 7016) at high level and Main Grey (BS 18 25) at low level.
- Partitions - Colour to match wall cladding
- Floors - Colour to match Main Grey (RAL 7016) and taken down to min. 3c below GPC.
- Mortar - Natural
- Landings doors - Colour: Anthracite Grey (RAL 7016)
- Personnel doors - Colour: Anthracite Grey (RAL 7016)
- Bi-parting overhead panels - Colour: Anthracite Grey (RAL 7016)
- Window - Extruded Aluminium window sections - Colour: Anthracite Grey (RAL 7016)
- Glasing Unit - Colour: Grey

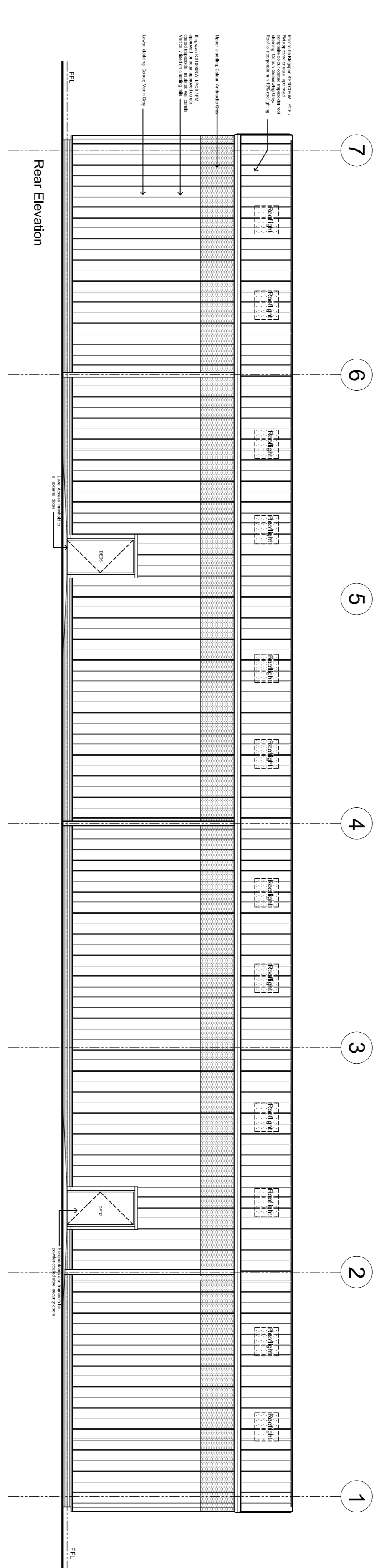
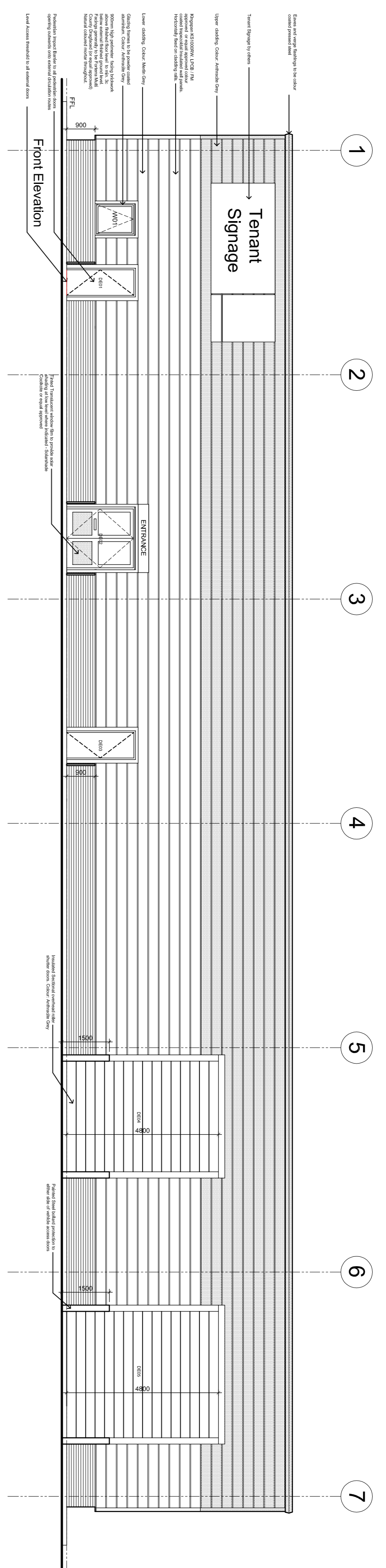
Hatched areas denote contrasting colours

**CRITICAL DOOR DIMENSIONS**

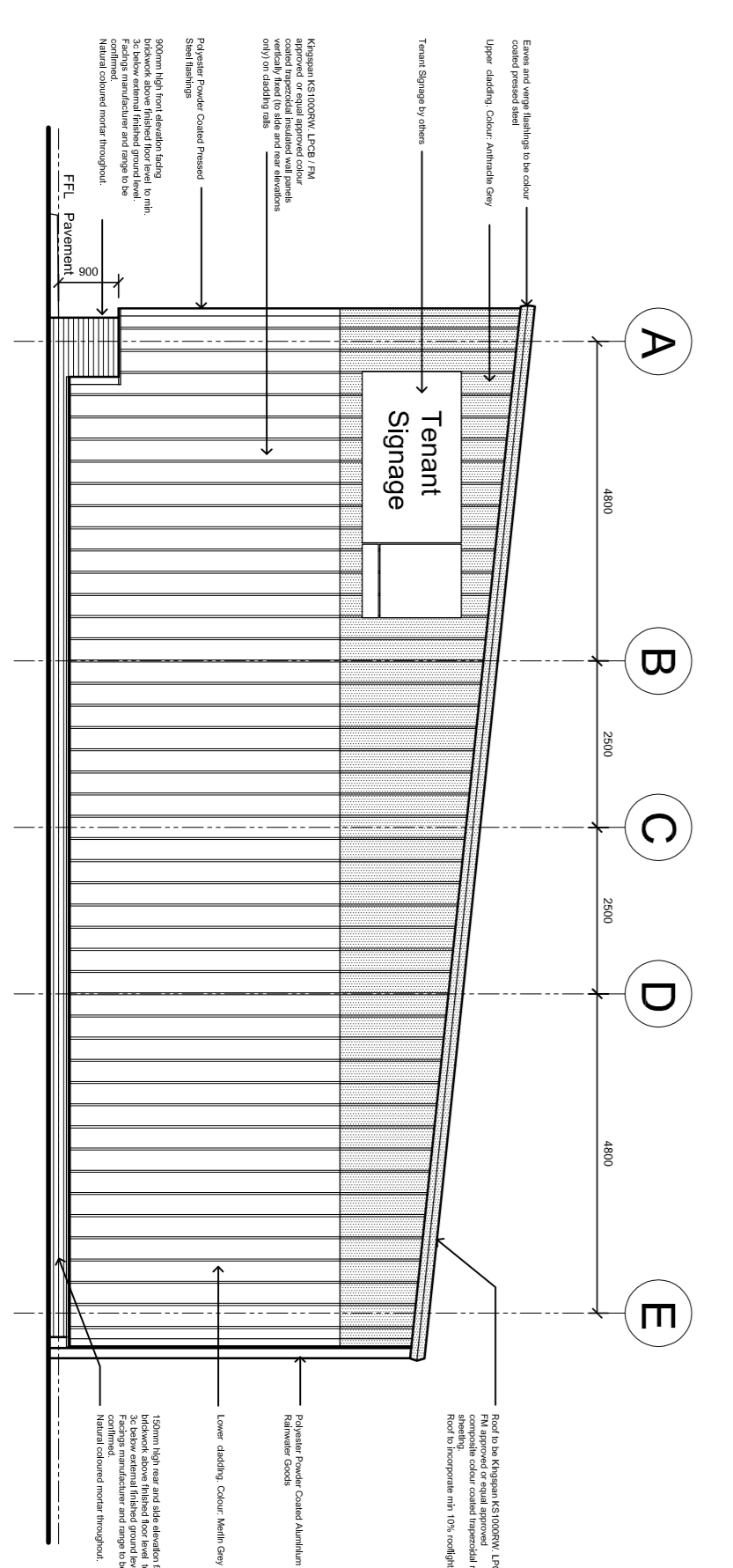
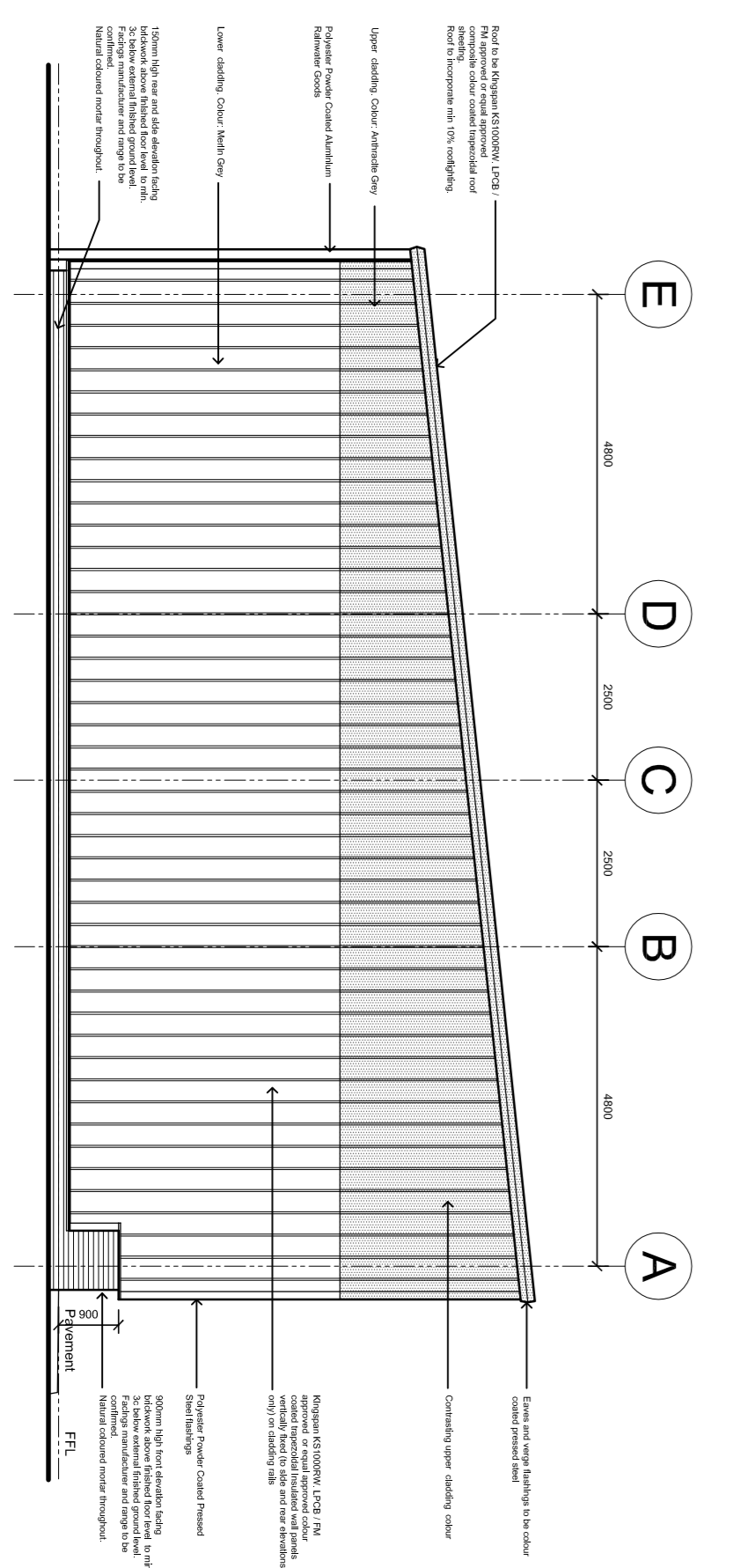
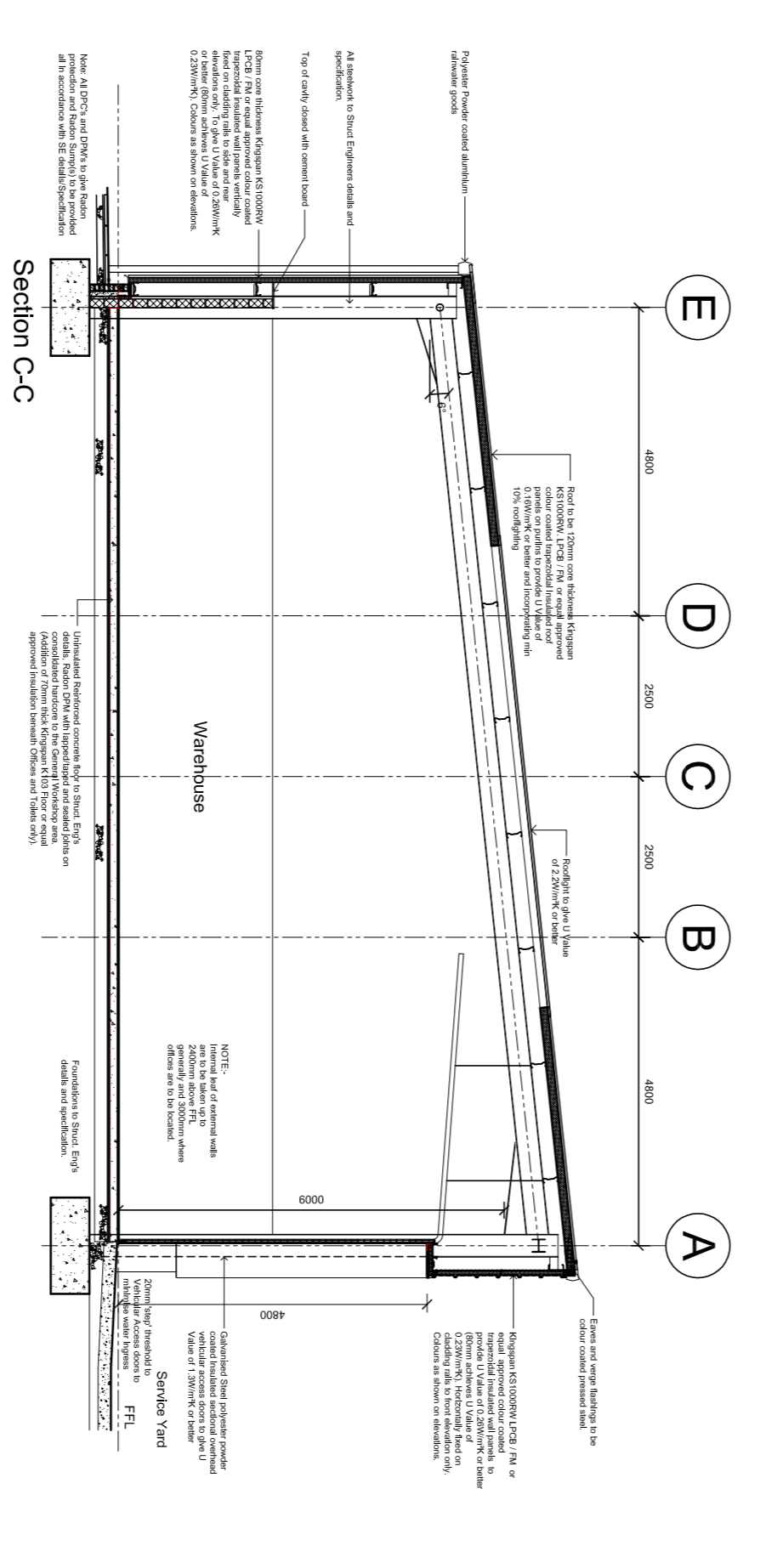
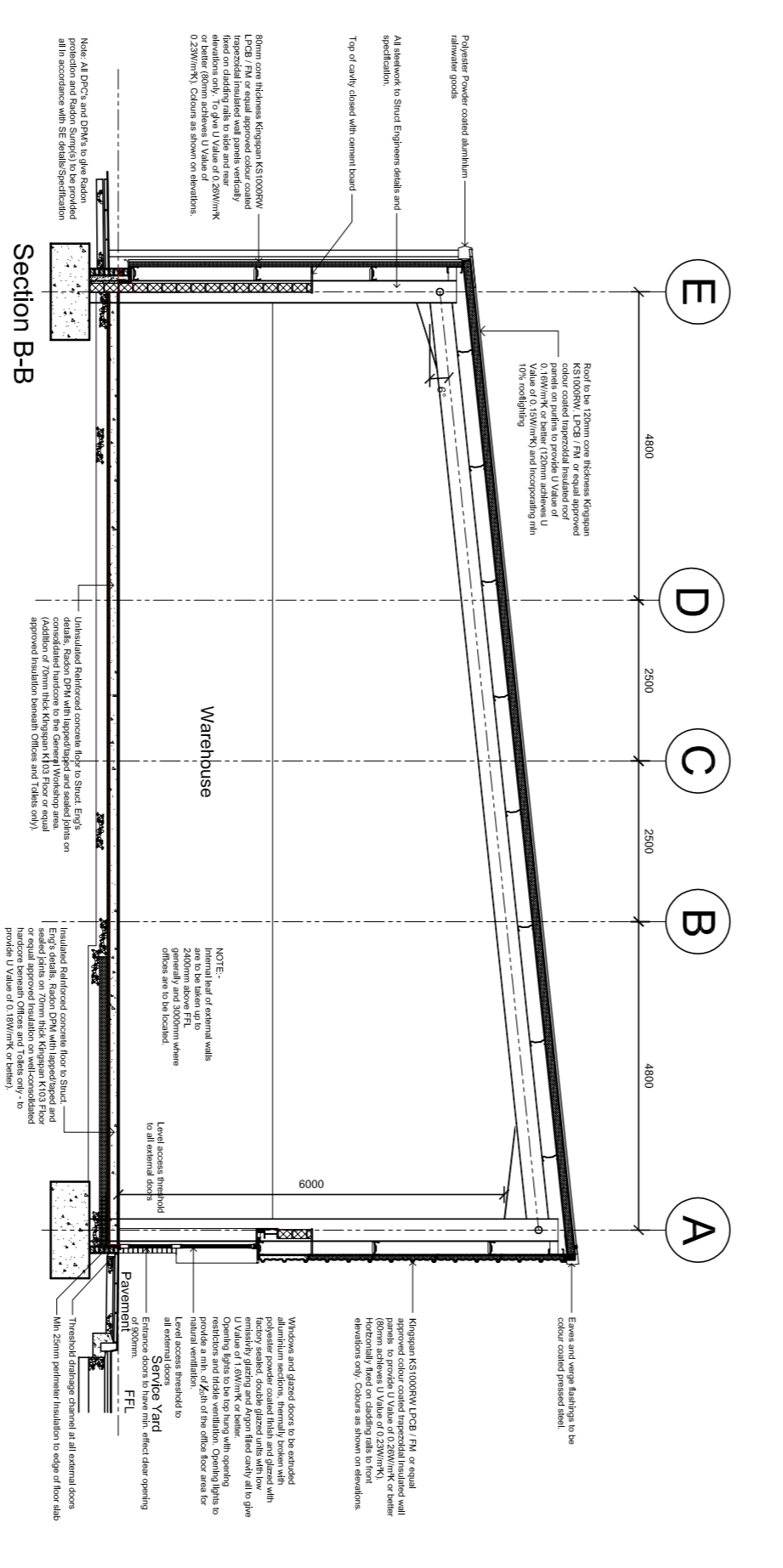
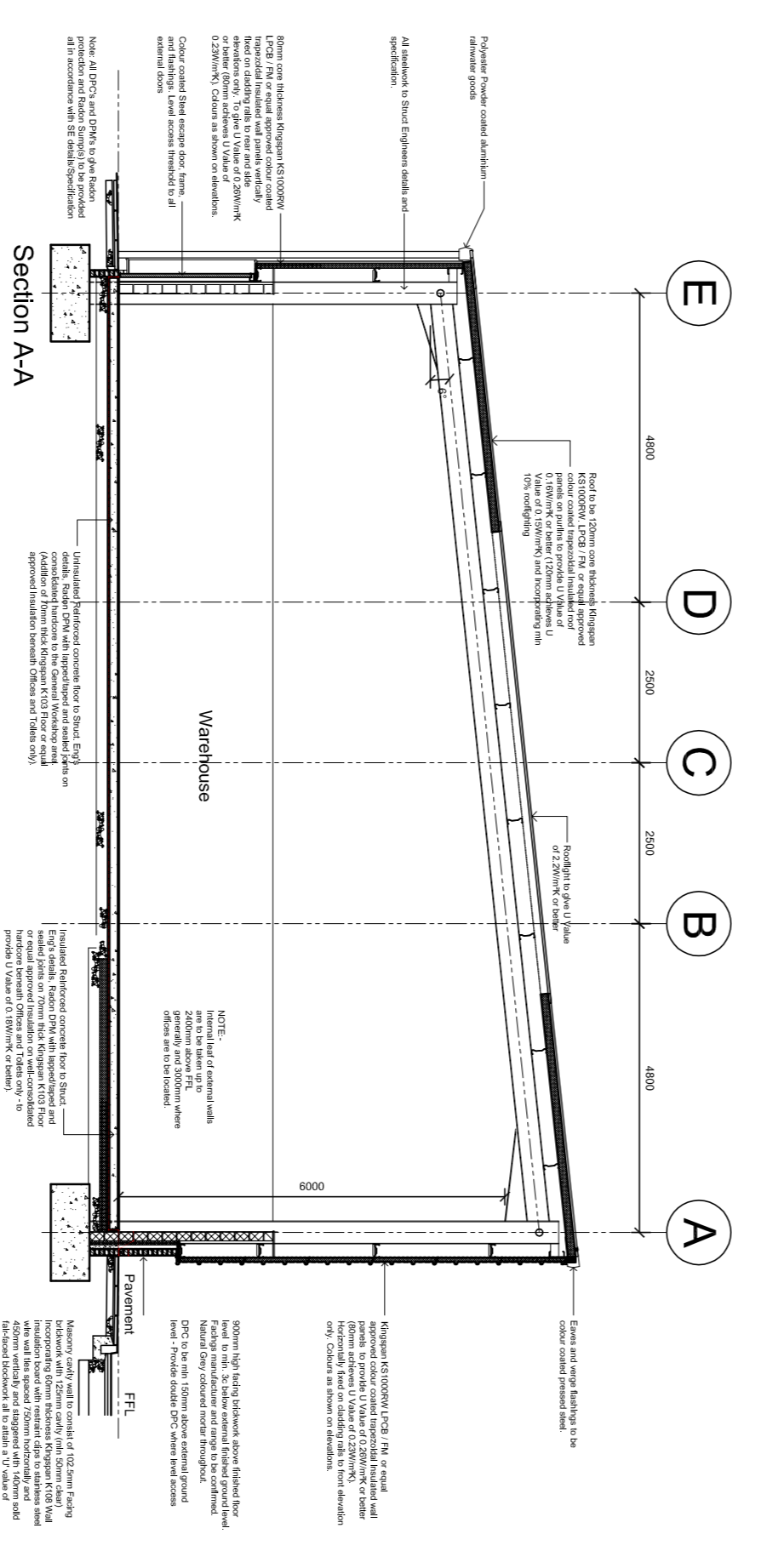
Internal Doors - Minimum effective clear with 800mm  
 Entrance Doors - Minimum effective clear with 900mm  
 Fire Exit Doors - Minimum effective clear with 850mm  
 All vision panels to have minimum zones of visibility between 500mm to 800mm and 1500mm to 1500mm.

**U VALUES**

- Roof 0.18W/mK
  - Roof (below heated Offices and WC's only) 0.18W/mK
  - Floor (below unheated Warehouse Space only) 0.18W/mK
  - Windows 1.8W/mK
  - Personnel Doors 1.6W/mK
  - High-usage entrance Doors 1.3W/mK
  - Vehicle Access Doors 1.3W/mK
- NOTE -** Notwithstanding the above stated U Values, these are a minimum required by the Building Standards and actual values required may be better than this.  
 Actual values are to be required by SBEM Calc's.



Typical Gable Section



**21123-PJA-87-ZZ-DR-A-3001-C**

**DRAWING NUMBER:** South 2, The Lyceum, Bant Street, Port Sunlight, Merseyside, CH24 4UJ  
 0151 643 528  
 www.paddockjohnson.com  
**Paddock Johnson Partnership Limited** Registered in England  
 15107408, No. 03662675

**PLANNING**

SCALE: DATE: BY: CHECKED:

1100@AI 28.04.23 PP PP

© Crown copyright and database rights 2020 OS 1000090148  
 CLIENT: Northern Trust

PROJECT: Sreckveot Industrial Estate  
 Whitehaven

STATUS: GA Elevations & Sections