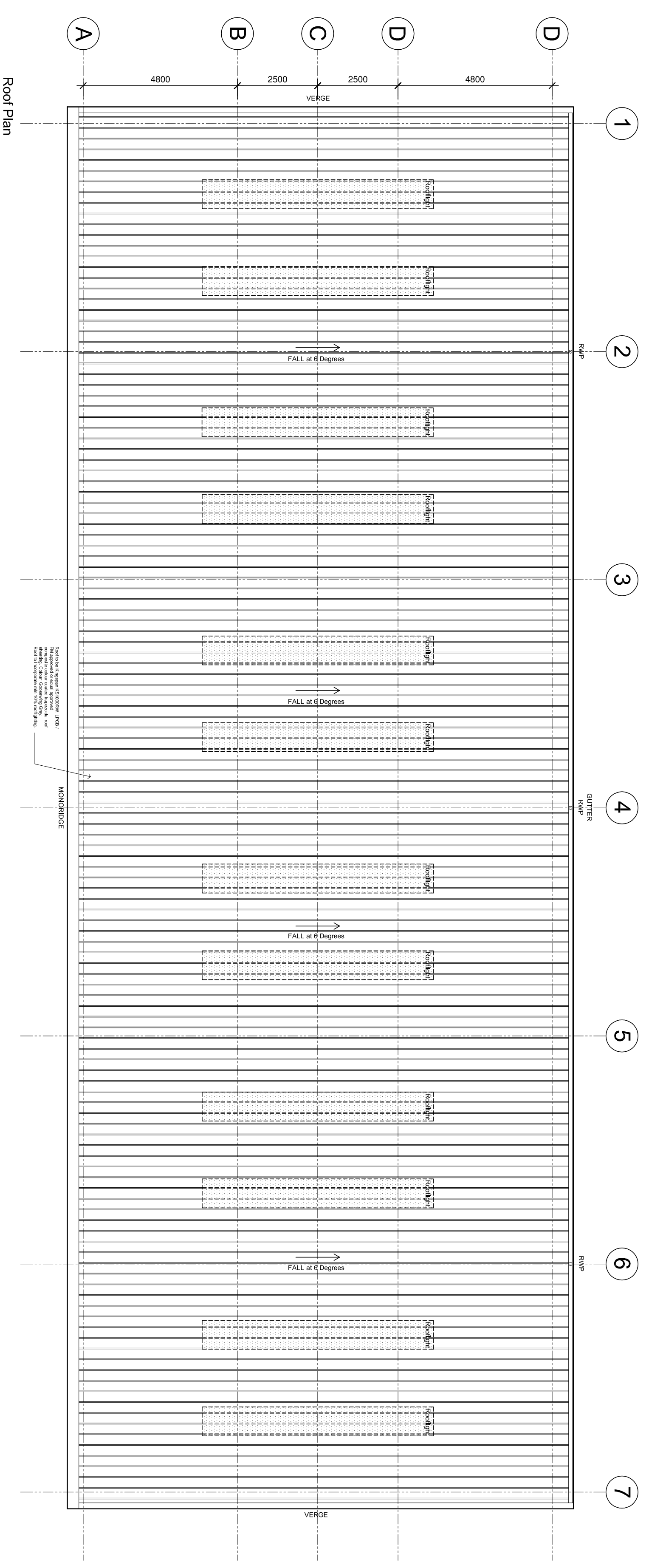
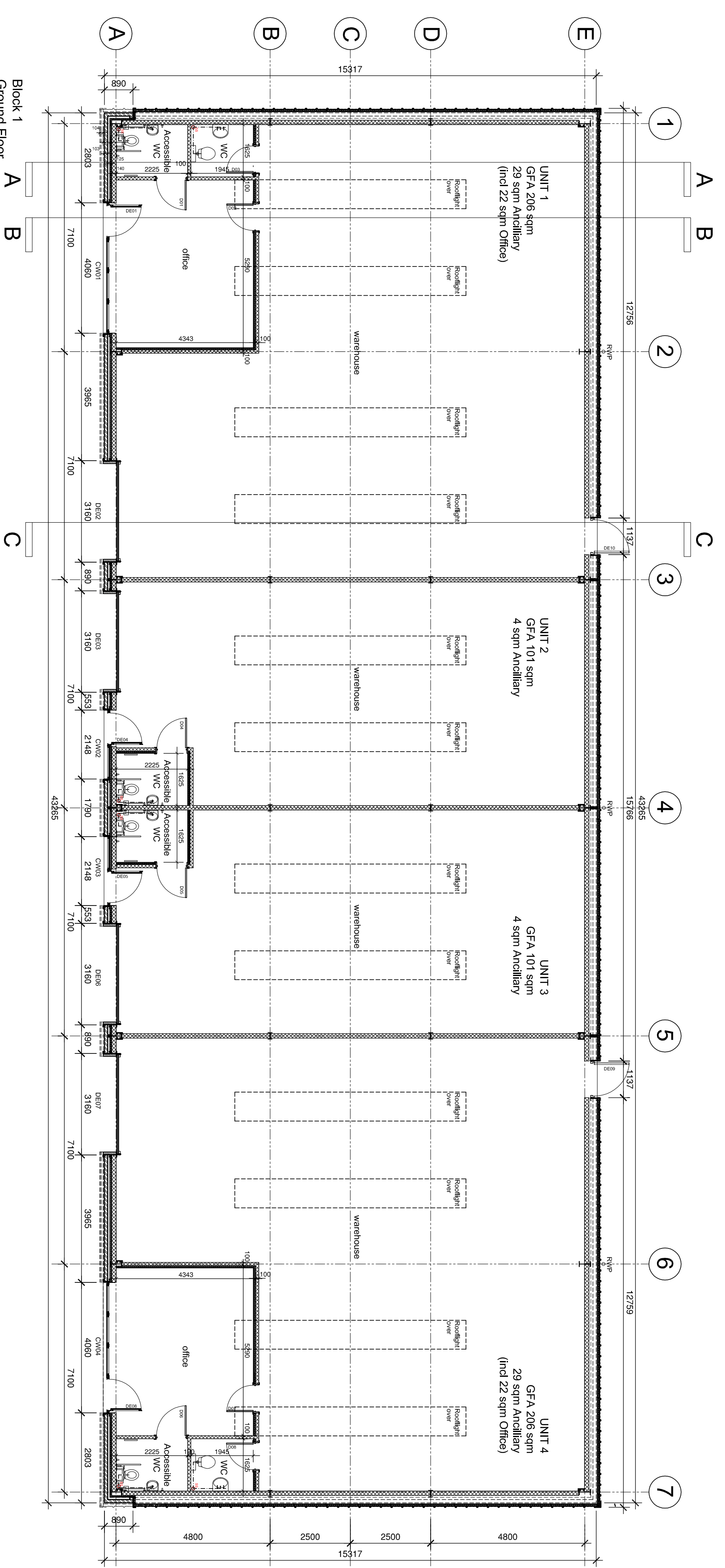


Notes:
 This Drawing is the copyright of Paddock Johnson Partnership Limited and may not be used without prior written consent. All dimensions are in millimetres unless otherwise stated. Due to inaccuracies of scanning, scanned images should not be scaled.
 + REV. DATE. DESCRIPTION.
 A 03.05.23 Various amendments to avoid clash with HV Cables.
 RJ: SD



- All insulation to be GCR/RC-free with zero ozone depletion / seasonal Enhanced details.**
- All Chidding details to comply with Kingspan Enhanced details.**
- MATERIAL COLOUR KEY**
- Steel network - Metal Grey
 - Roof cladding - Kingspan K3 100gsm Insulated Roof Panel (LPCB Approved) or equal - Colour: Gossaming Grey
 - Glazing - Facets & Verges - Colour: Anthracite Grey
 - Rainwater pipes - Colour: Anthracite Grey
 - Wall cladding - Kingspan K3 100gsm Insulated Wall Panel (LPCB Approved) or equal - Colour: Anthracite Grey at high level and Metal Grey at low level.
 - Fittings - Colour - to match wall cladding Anthracite Grey / Metal Grey
 - Brickwork - Red Frazers (Forrester County Multi Daylight) - TBA and paint down from 2nd floor DPC.
 - Loading doors - Colour: Anthracite Grey
 - Personnel doors - Colour: Anthracite Grey
 - Escape doors - Colour: Anthracite Grey
 - Branding/colours panels - Colour: TBA
 - High-useage entrance doors - Colour: Anthracite Grey
 - Glazing tint - Colour: TBA

- CRITICAL DOOR DIMENSIONS**
- Internal Doors - Minimum effective clear width 800mm
 - External Doors - Minimum effective clear width 800mm
 - Fire Exit Doors - Minimum effective clear width 800mm
- All vision panels to have minimum zones of visibility. Minimum height to 800mm and 1500mm to 1500mm.

U VALUES

Roof	0.18W/m ² K
Floor	0.28W/m ² K
Floor (below heated Offices and WCs only)	No U Value
Windows	1.8W/m ² K
Rooflights	2.2W/m ² K
High-useage entrance Doors	3.0W/m ² K
Vehicle Access Doors	1.3W/m ² K

NOTE: - Notwithstanding the above stated U Values, these are a minimum required by the Building Standards and actual values required may be better than this.
 Actual values are to be as required by SBEM Calculations.

© Crown copyright and database rights 2020 OS 1000060148
 CLIENT: Northern Trust

PROJECT: Sneekelect Industrial Estate
 Whitehaven

DRAWING NUMBER: **22123-PA-BI-ZZ-DR-A-3000-A**
 DRAWING TITLE: **Block 1 GA Plan & Elevations**
 STATUS: **PLANNING**

SCALE: 1:100@A1
 DATE: 27.04.2023
 BY: PP
 CHECKED: PP



South 2, The Lyceum,
 Baitn Street, Port Sunlight,
 Merseyside, CH2 2LJ
 0151 643 0232
 www.paddockjohnson.com
 Paddock Johnson Partnership
 Limited Registered in England
 15707608, No. 06582925