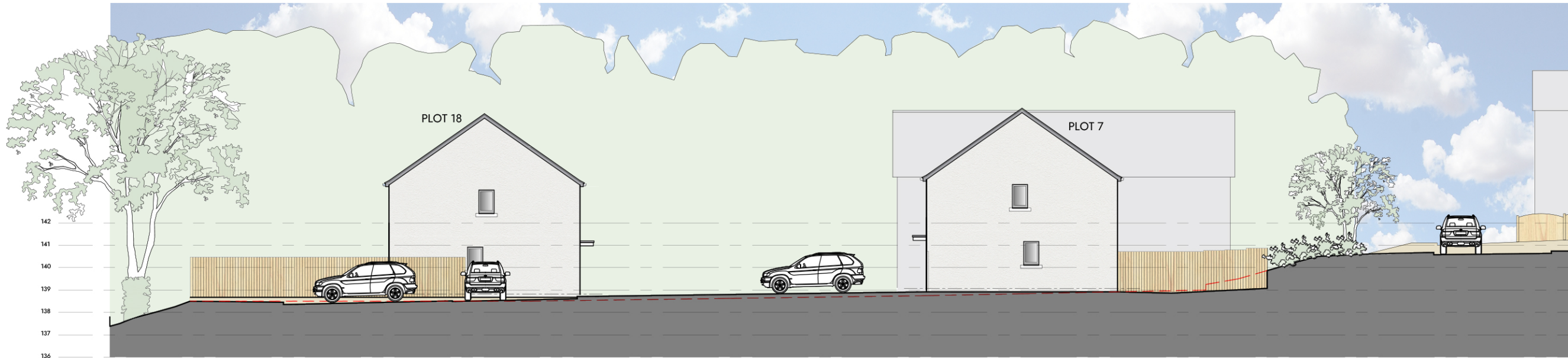
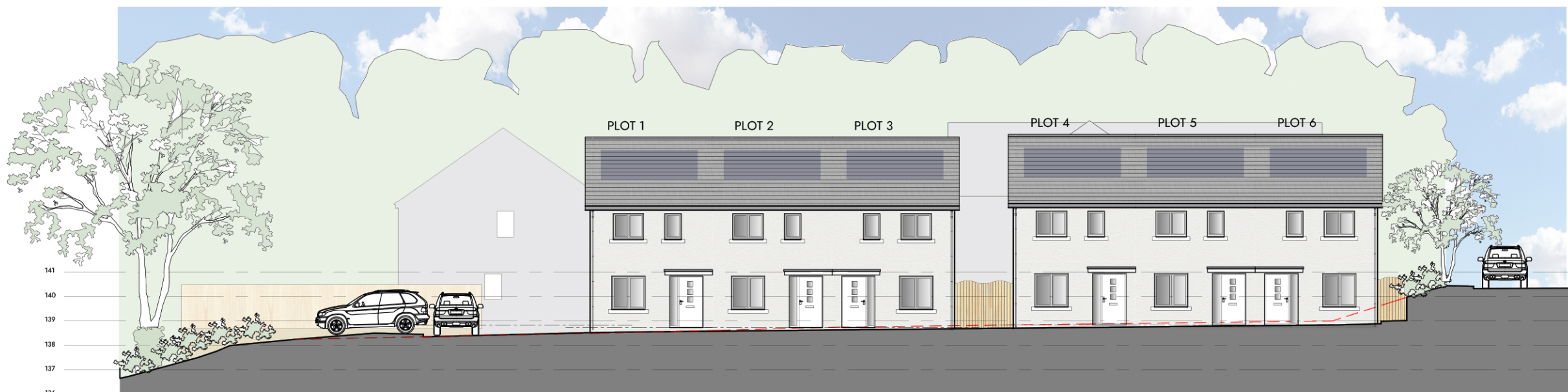




SECTION AA



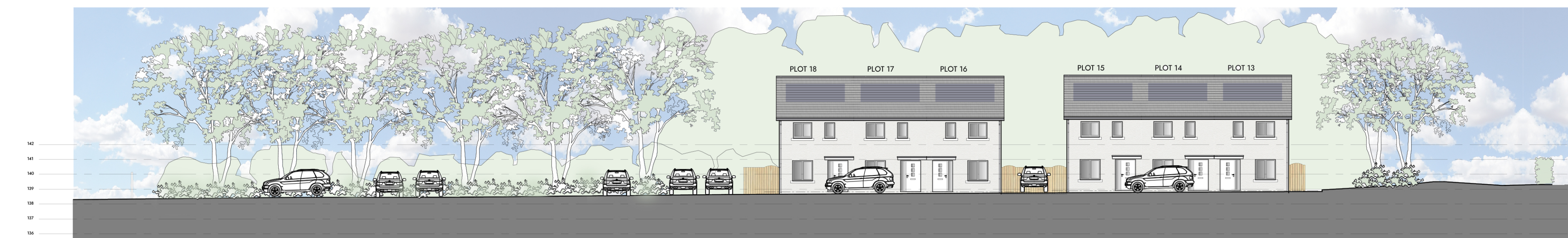
SECTION BB



SECTION CC



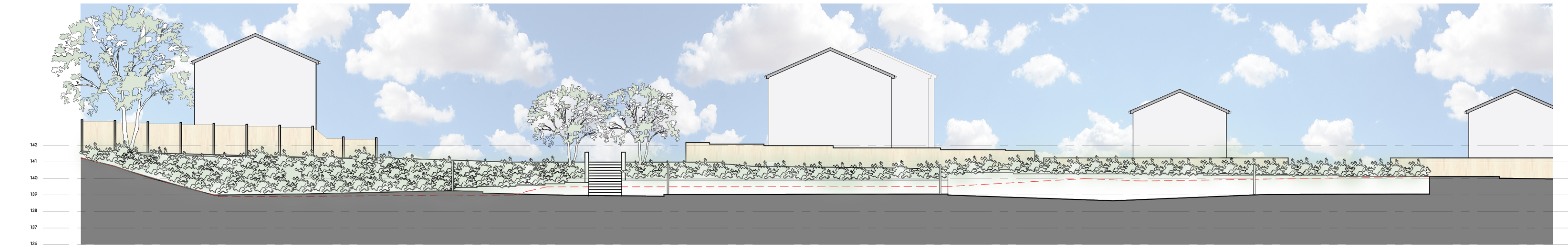
SECTION DD ELEVATION FROM GREENVALE COURT



SECTION EE THROUGH CENTRE LINE OF ACCESS ROAD



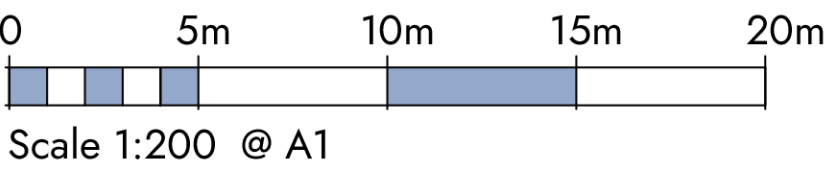
SECTION FF THROUGH CENTRE LINE OF ACCESS ROAD



SECTION GG



SECTION HH ELEVATION FROM GRIFFIN CLOSE



B	Tree survey and section lines added	BG	06/24
A	Radius kerb and plots 4-6 parking amended	BC	11/23
Rev.	Description	Drawn	Date

Proposed Site Sections

Residential Development, Griffin Close, Frizington

This drawing is to be read in conjunction with all related drawings. Dimensions must be checked and verified on site before commencing work or producing shop drawings. The originator must be notified immediately of any discrepancy. This drawing is copyright and remains the property of Architects Plus, and may not be reproduced in any way without written consent from Architects Plus.

Victoria Galleries, Viaduct House, Victoria Viaduct, Carlisle,
Cumbria, CA3 8AN

ap@architectsplus.co.uk

01228 515144

WWW.ARCHITECTSPUS.CO.UK

Registered Office
Victoria Galleries, Viaduct House
Victoria Viaduct, Carlisle, Cumbria, CA3 8AN

Company
Architects Plus (UK) Limited
Registered in England
no.4221140

Proposed Site Sections

Status
For Comment

Project
Residential Development
Griffin Close, Frizington

Client
Thomas Armstrong (Con) Ltd
Home Group

RIBA stage
3 - Planning

Date
06/24

Drawn by
BG

Scale
1:200

Computer No.
P02

Drawing Number
22031-04

Revision