



Fell View Avenue 1



Windermere Road 1



Fell View Avenue 2



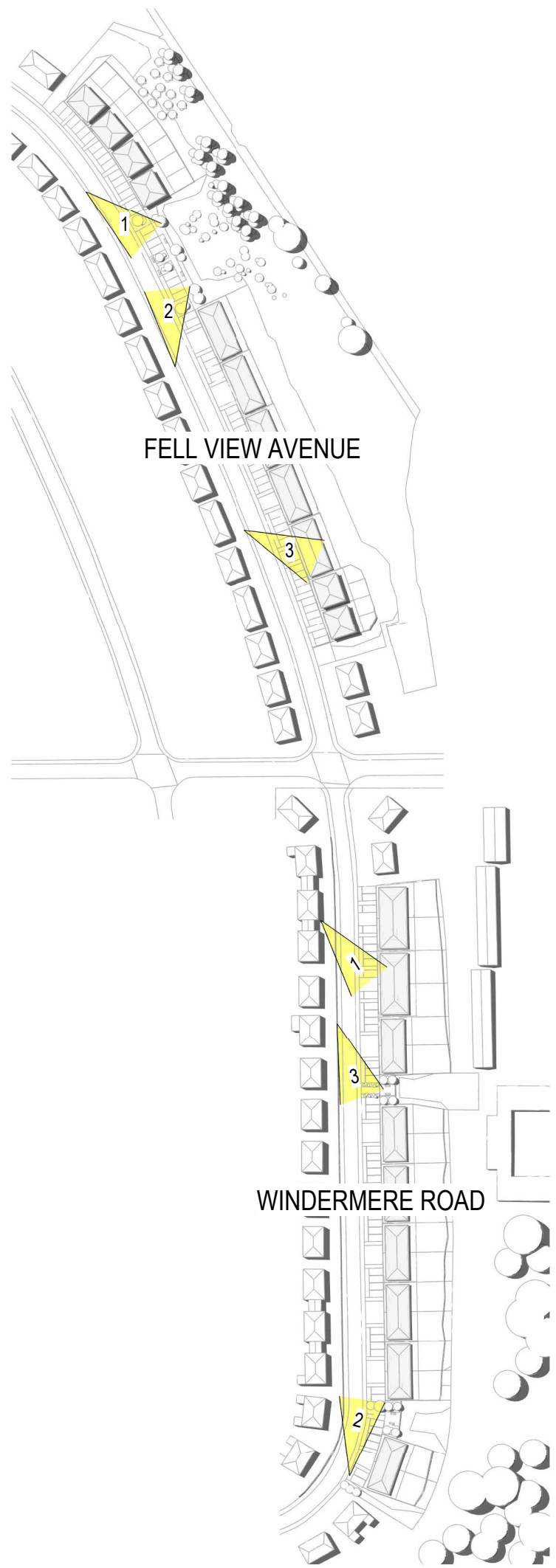
Windermere Road 2



Fell View Avenue 3



Windermere Road 3



Reference

# Proposed Perspective Views

## Woodhouse - Residential Development

A	Amendments following value engineering discussions.	24/11/2022	AB	BG
revision	description	date	drawn	approved
RIBA stage		Status		
3 - Spatial Coordination		PL - Planning		

ARCHITECTS PLUS

Project  
Woodhouse - Residential Development

Client name  
Thomas Armstrong

Drawing  
Proposed Perspective Views

Drawn by	Date	Plot date / time
AB	21/06/2022	24/11/2022 13:55:51
Scale: @ A1	Computer file	
NTS	C:\Users\Ashra\Architects Plus (UK) Ltd\Drawings - Documents\Jobs\22016 Woodhouse\Woodhouse\3 Live Drawings\2 Rev001-WP\22016-APL-02-ZZ-M3-A-Fell View Avenue - V02.rvt	Revision
Drawing number		Revision
22016-PL-020A		A