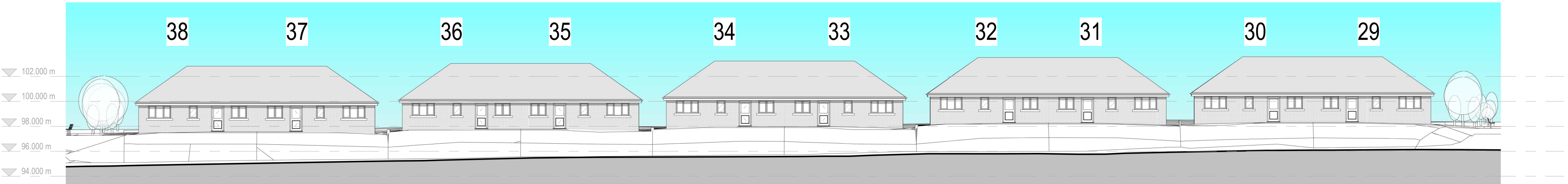
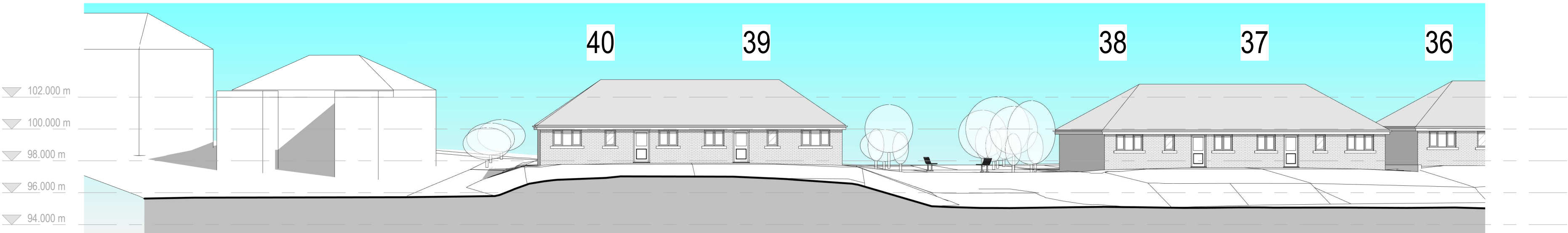


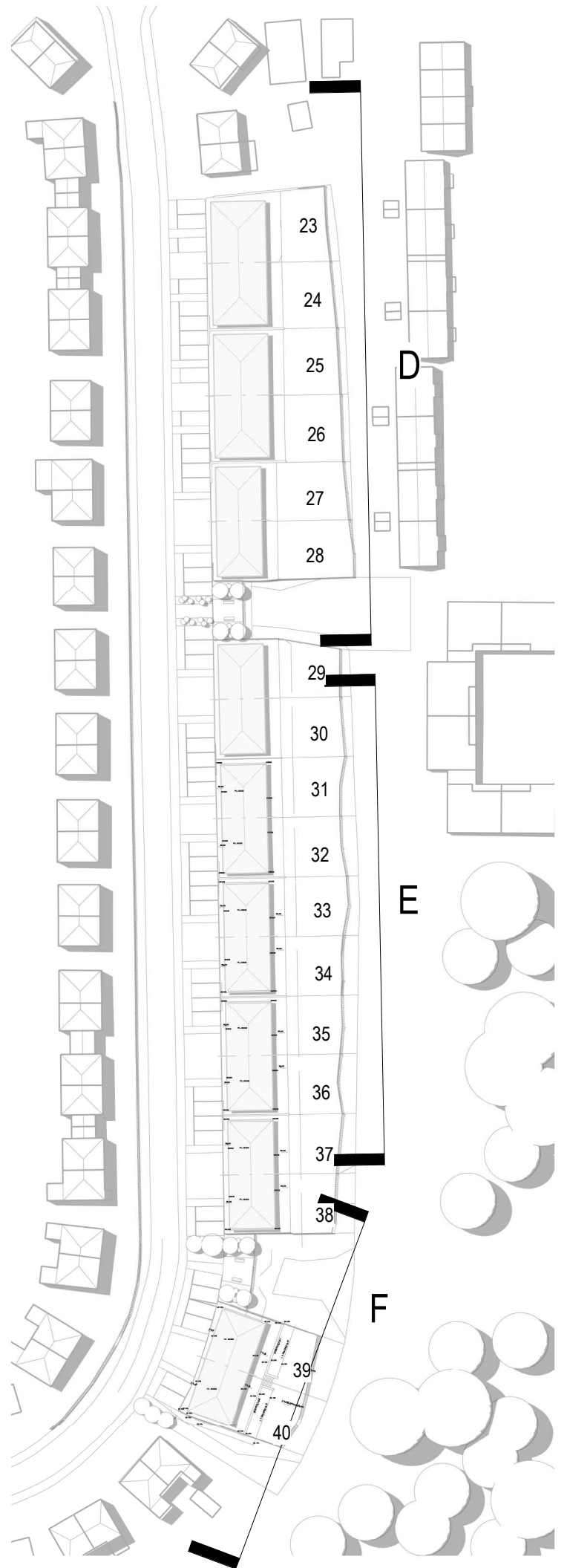
Elevation D  
1 : 200



Elevation E  
1 : 200



Elevation F  
1 : 200



Reference

revision	description	date	drawn	approved
A	Amendments following comments from Planning department.	26/10/2022	AB	BG
3	Developed Design	PL - Planning		

ARCHITECTS PLUS

Woodhouse - Residential Development

Thomas Armstrong

Drawn by	Date	Plot date / time
AB	23/06/2022	26/10/2022 10:40:53
As indicated		
22016-PL-018A		A

Windermere Road - Proposed Overall Elevations 2  
Woodhouse - Residential Development

