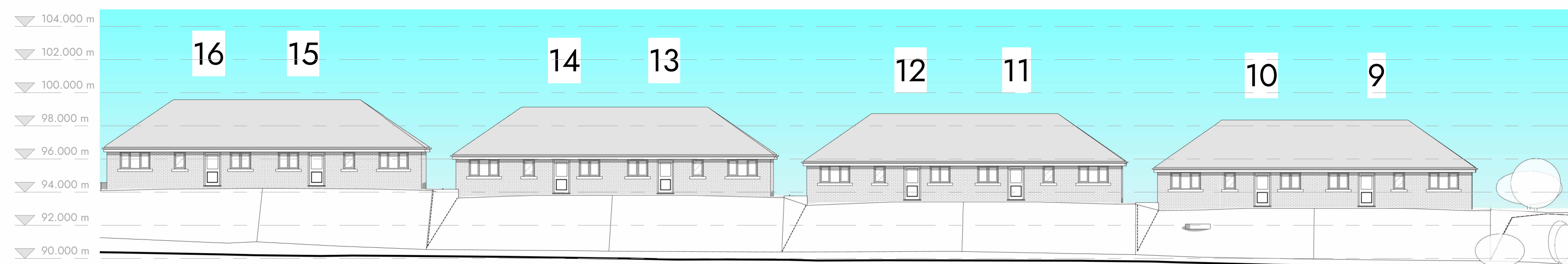




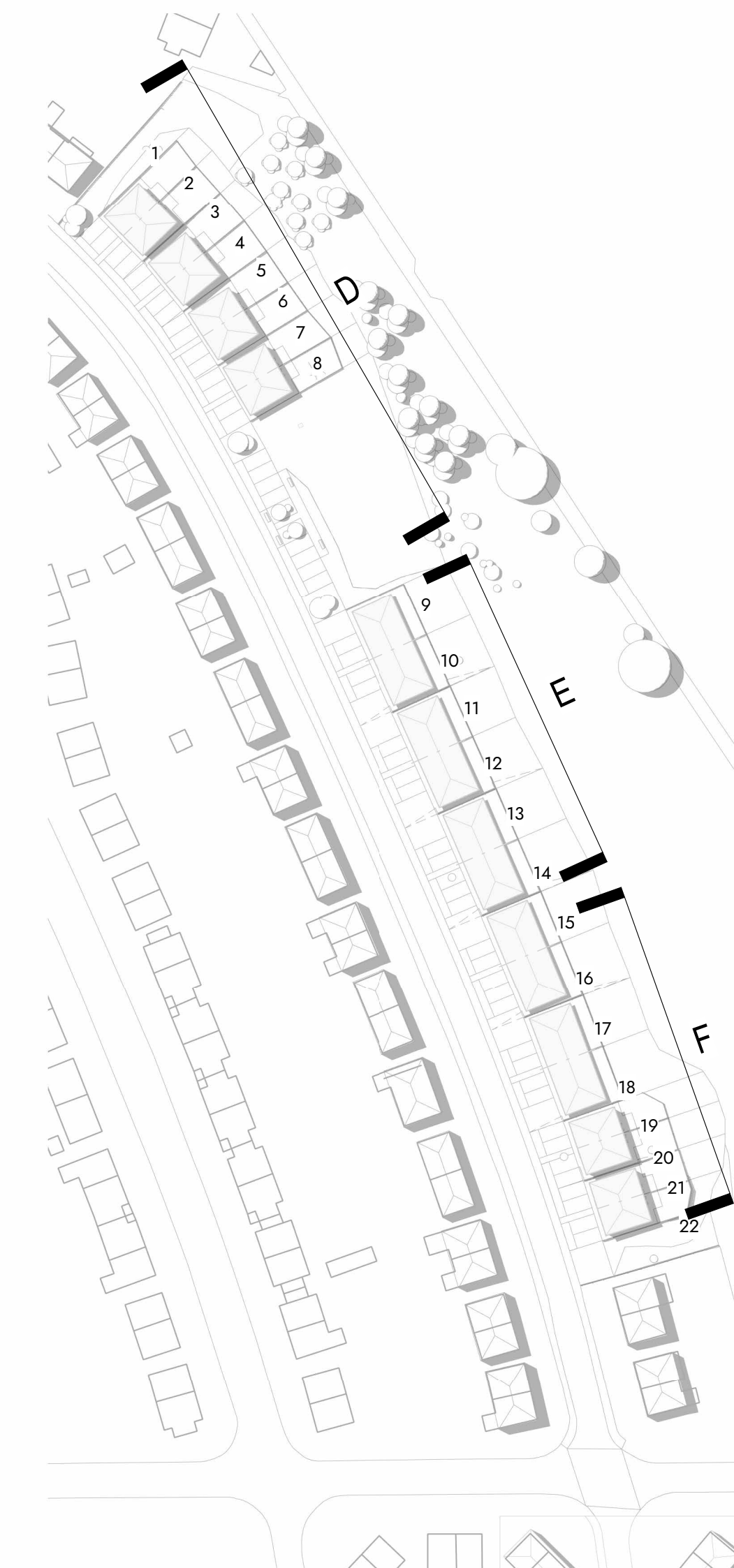
D Elevation D
1 : 200



E Elevation E
1 : 200



F Elevation F
1 : 200



Reference

revision	description	date	drawn	approved
B	Amendments following recent discussions including extent of surface materials amended.	27/09/2023	AB	BG
A	Amendments following comments from Planning department.	26/10/2022	AB	BG

ARCHITECTS PLUS

Project
Woodhouse - Residential Development

Client name
Thomas Armstrong

Drawing
Fell View Avenue - Proposed Overall Elevation 2

Drawn by
AB

Date
28/07/2022

Plot date / time
27/09/2023 16:40:44

Scale @ A1
As indicated

Revision
B

Fell View Avenue - Proposed Overall Elevation 2

Woodhouse - Residential Development

