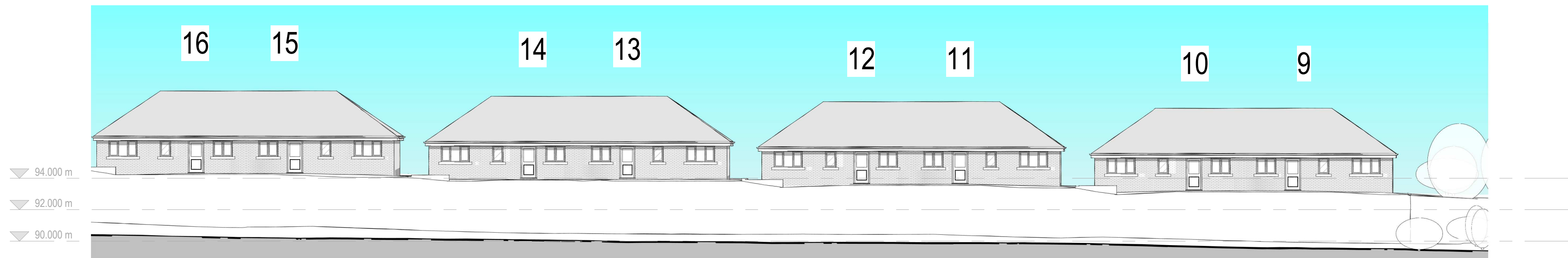
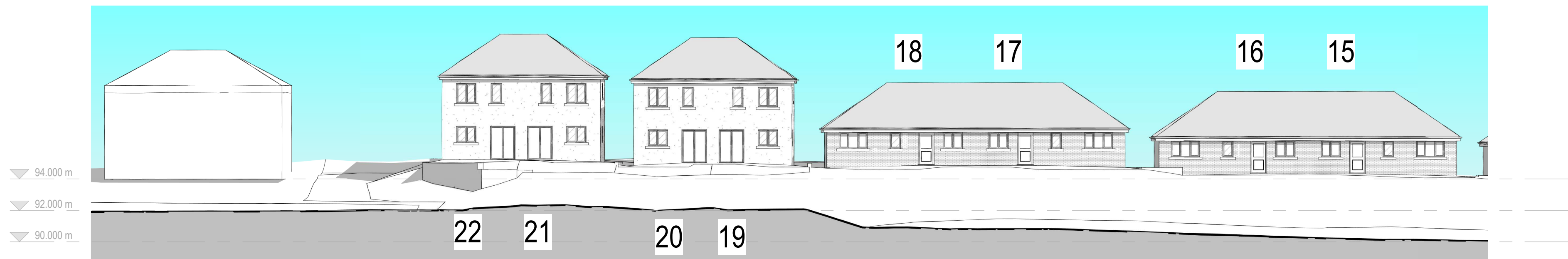


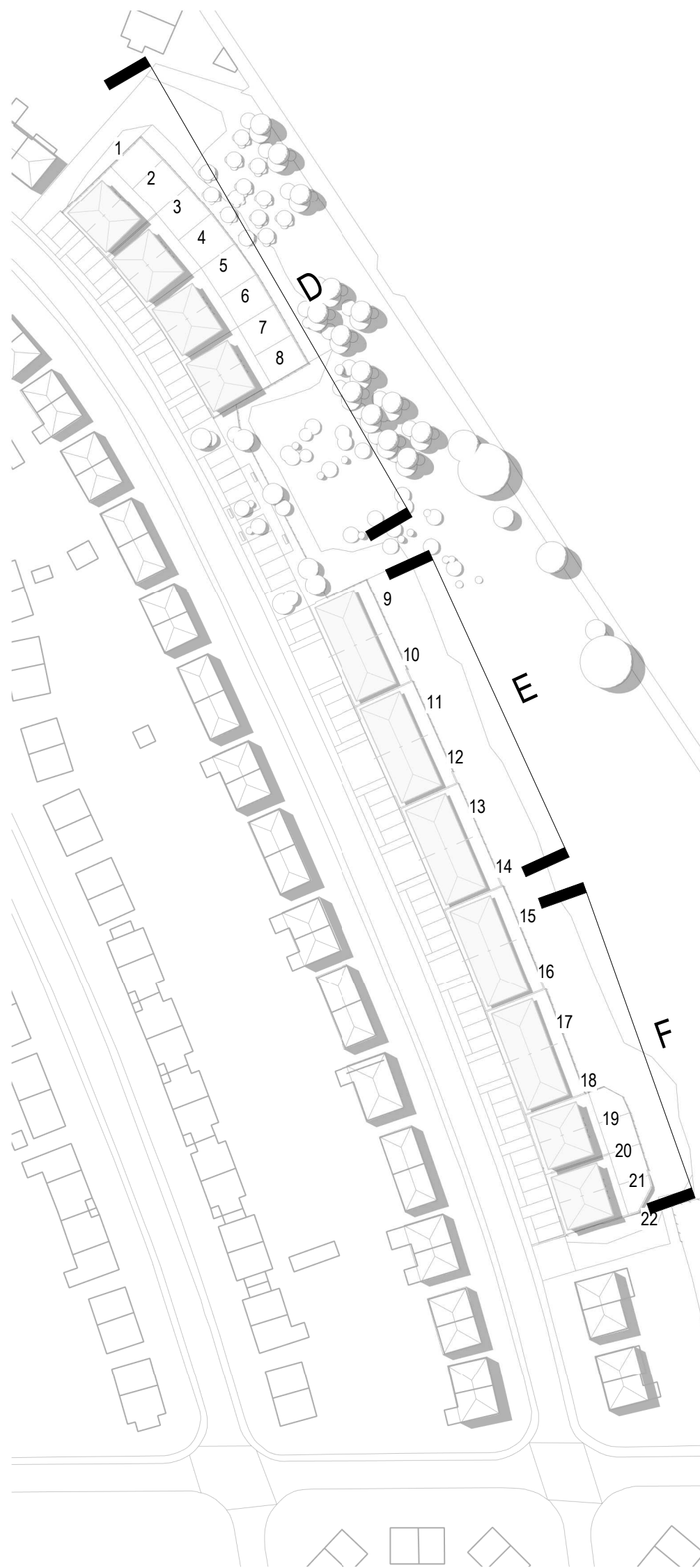
**D** Elevation D  
1:200



**E** Elevation E  
1:200



**F** Elevation F  
1:200



Reference

A	Amendments following comments from Planning department.	26/10/2022	AB	BG
revision	description	date	drawn	approved
RIBA stage		Status		
3 - Developed Design		PL - Planning		

**ARCHITECTS PLUS**

Project  
Woodhouse - Residential Development

Client name  
Thomas Armstrong

Drawing  
Fell View Avenue - Proposed Overall Elevation 2

Drawn by  
AB

Date  
28/07/2022

Plot date / time  
26/10/2022 10:44:54

Scale @ A1  
As indicated

Computer file  
C:\Users\A\h\Architects Plus (UK) Ltd\Drive\ - Documents\Jobs\22016 Woodhouse Village\avenue3 Live Drawings\2 Rev\001-WP\22016-APL-02-22-343-A-Fell View Avenue - VE2.rvt

Drawing number  
22016-PL-009A

Revision  
A

# Fell View Avenue - Proposed Overall Elevation 2

## Woodhouse - Residential Development