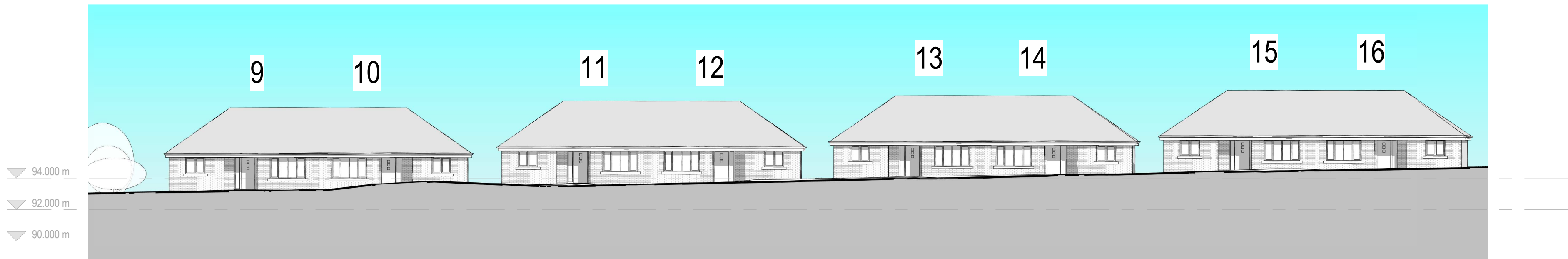




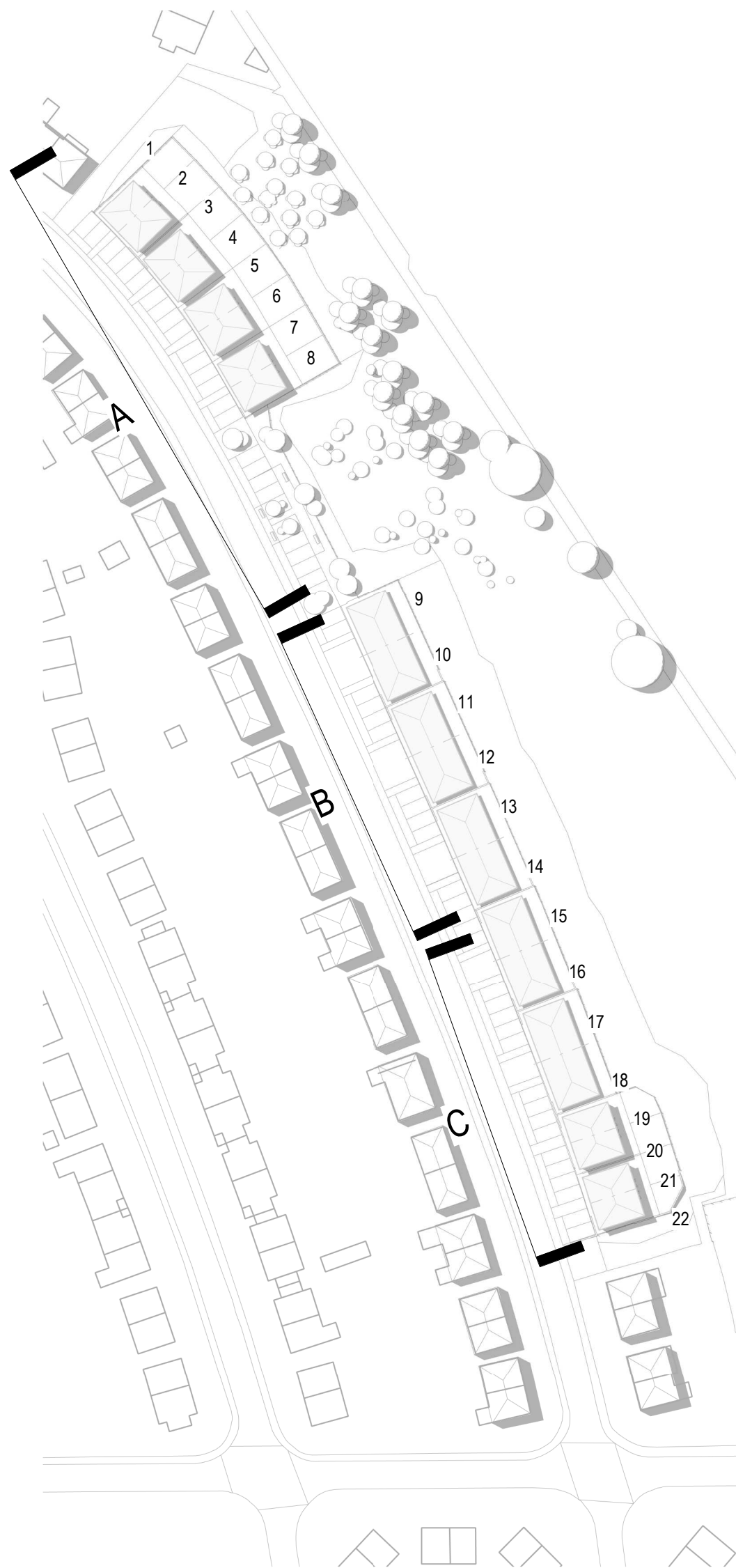
Elevation A
1 : 200



Elevation B
1 : 200



Elevation C
1 : 200



Reference

A	Amendments following comments from Planning department.	26/10/2022	AB	BG
revision	description	date	drawn	approved
RIBA stage	Status			
3 - Developed Design	PL - Planning			

ARCHITECTS PLUS

Project
Woodhouse - Residential Development

Client name
Thomas Armstrong

Drawing
Fell View Avenue - Proposed Overall Elevations 1

Drawn by
AB

Date
28/07/2022

Plot date / time
26/10/2022 10:44:47

Scale @ A1
As indicated

Computer file
C:\Users\A\h\Architects Plus (UK) Ltd\Drive\ - Documents\Jobs\2016 Woodhouse Village\avenue3 Live Drawings\2 Rev\01-WP\22016-APL-02-22-40-A-Fell View Avenue - VE2.rvt

Drawing number
22016-PL-008A

Revision
A

Fell View Avenue - Proposed Overall Elevations 1

Woodhouse - Residential Development