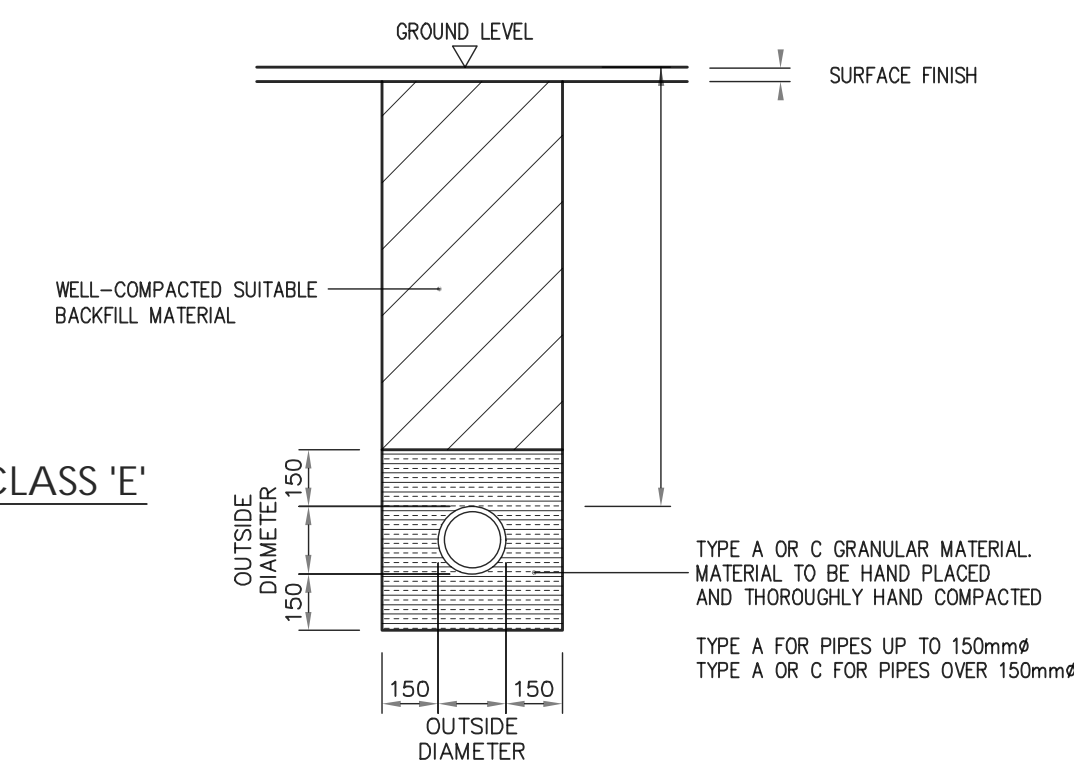


KEY TO SYMBOLS

- DRAINAGE RUN
- IC
● INSPECTION CHAMBER
- SC
● SAMPLE CHAMBER
- ▨ WATER TREATMENT PLANT



UPVC PIPE
BEDDING CLASS 'E'

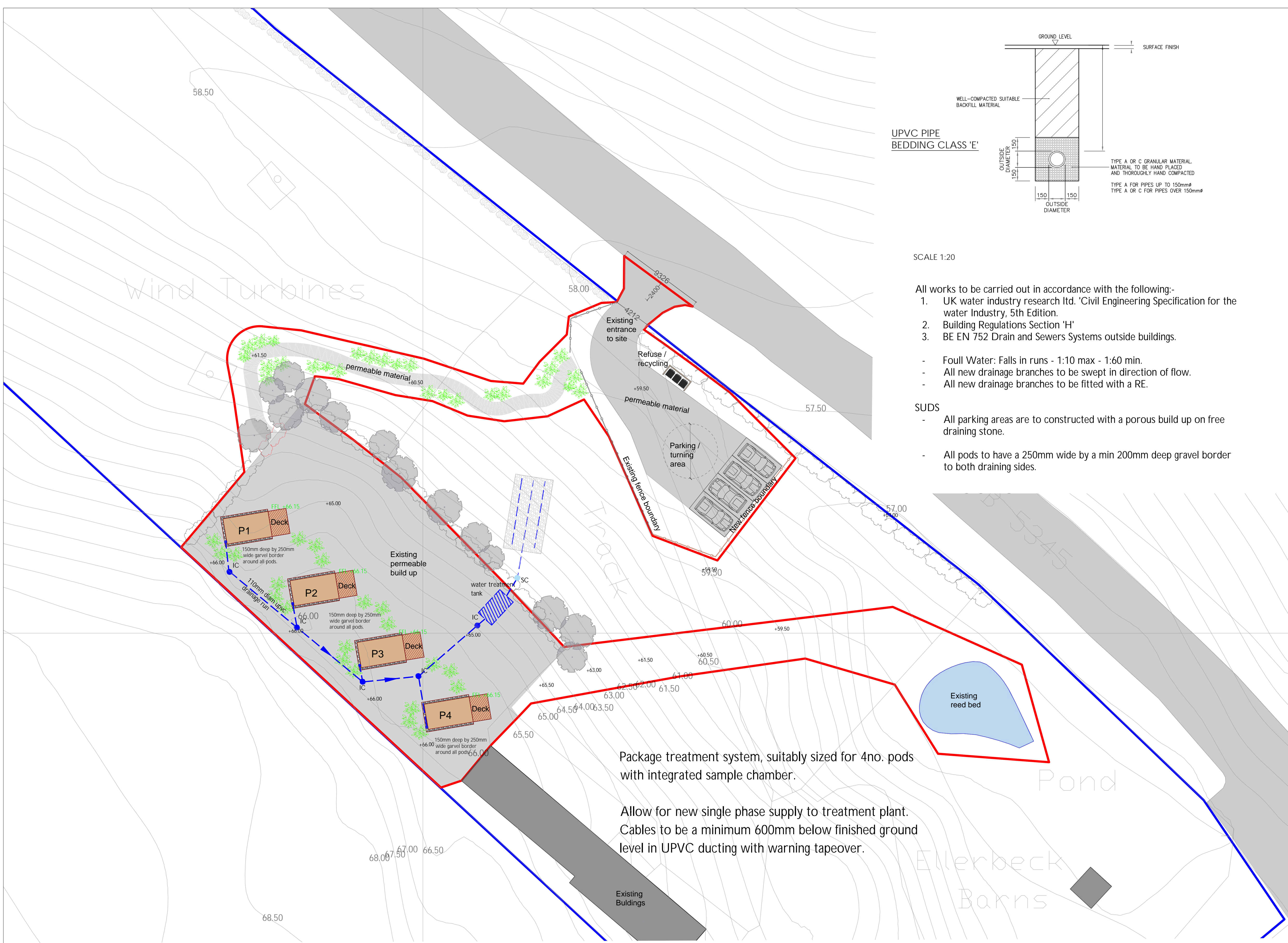
SCALE 1:20

- All works to be carried out in accordance with the following:-
1. UK water industry research Ltd. 'Civil Engineering Specification for the water Industry, 5th Edition.
 2. Building Regulations Section 'H'
 3. BE EN 752 Drain and Sewers Systems outside buildings.

- Foul Water: Falls in runs - 1:10 max - 1:60 min.
- All new drainage branches to be swept in direction of flow.
- All new drainage branches to be fitted with a RE.

SUDS

- All parking areas are to be constructed with a porous build up on free draining stone.
- All pods to have a 250mm wide by a min 200mm deep gravel border to both draining sides.

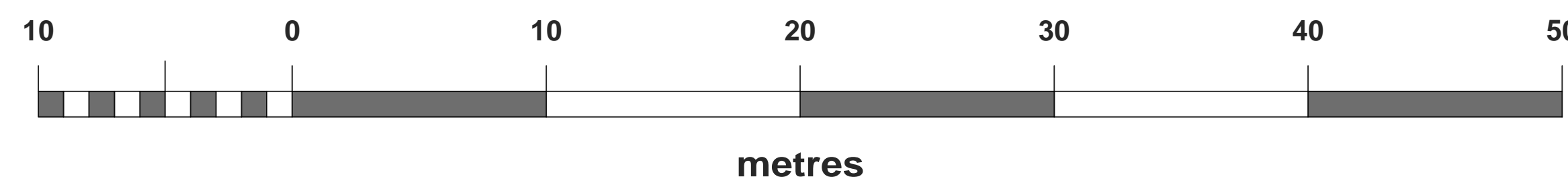


Package treatment system, suitably sized for 4no. pods with integrated sample chamber.

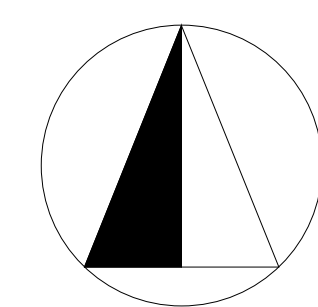
Allow for new single phase supply to treatment plant. Cables to be a minimum 600mm below finished ground level in UPVC ducting with warning tapeover.

— OWNERSHIP BOUNDARY

— SITE BOUNDARY

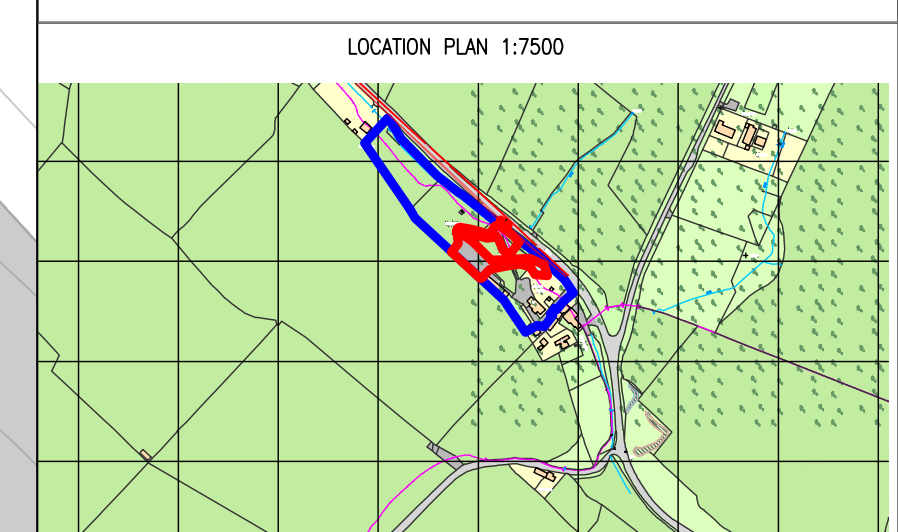


NORTH



Date	Description	Rev	By
12/10/22	Amended location of drainage per comments.	A	TA

Revision Description



Project:
Proposed Glamping Site For Gemma Waghorn
5 Ellerbeck Barns, Egremont Road, Egremont Cumbria
CA222UA

Drawing Title:
PROPOSED DRAINAGE PLAN

Drawing Number:
210825-01-04

Revision: A
Date: 11-10-21
Scale: 1:200 @ A1
Drawn By: -
CAD Dwg File: TA
Checked By:

Issue Status:
Full Planning Application