

Typical window elevation.

Plasterboard lining to window reveals with cover mould.

Parting bead with brush weather strip.

Internal and external horn detail to sash meeting rails.

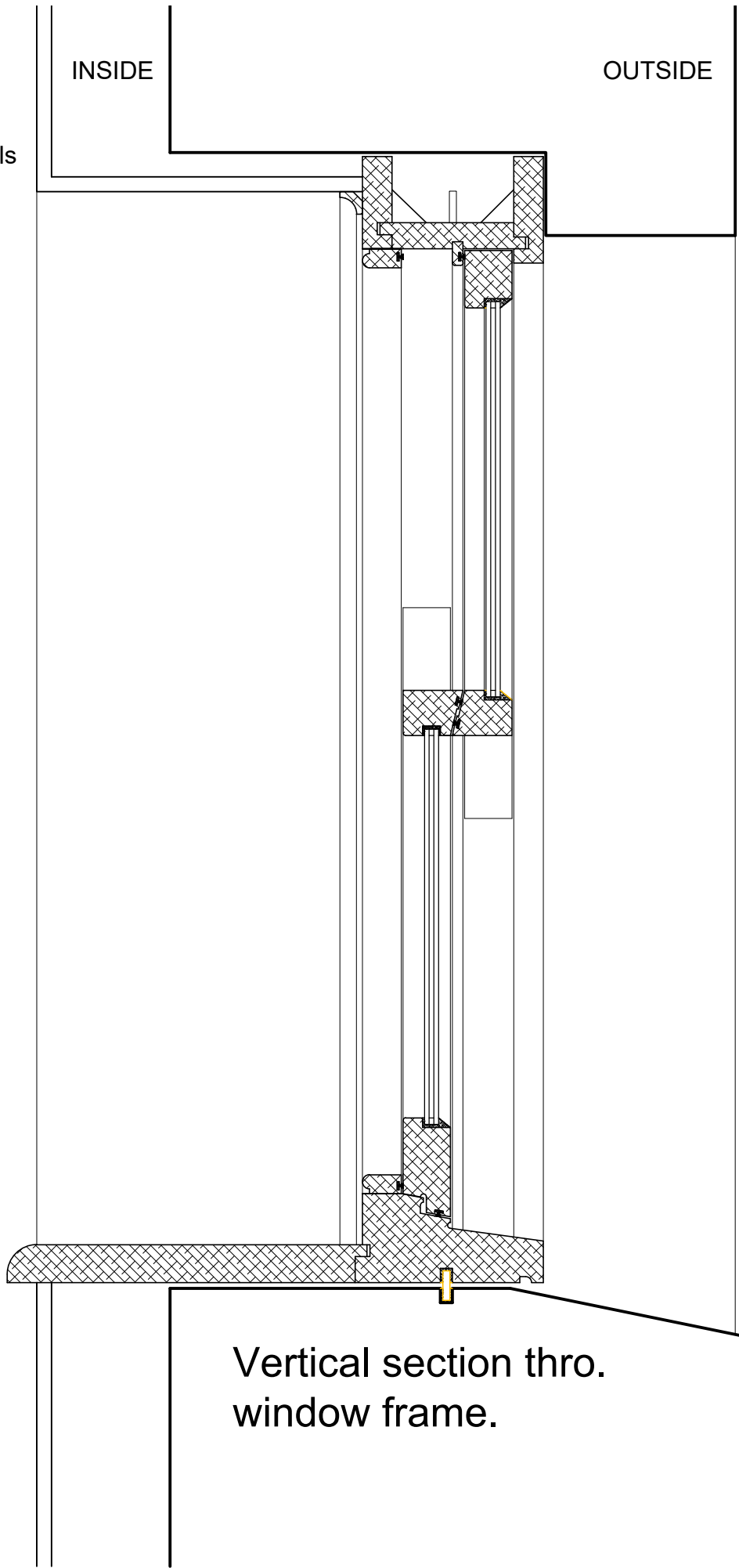
Chamfered meeting rails with brass fitch locking fastener.

Bottom rail to lower sash to be fitted with 2 brass sash lift fittings.

Hardwood cill with weather bar.

Internal window board.

Apply new external mastic pointing around frames to seal to render/stone.



Vertical section thro. window frame.

© COPYRIGHT MANNING ELLIOTT PARTNERSHIP 2020.
THIS DRAWING IS THE PROPERTY OF MANNING ELLIOTT PARTNERSHIP. IT MUST NOT BE COPIED OR REPRODUCED OR DIVULGED TO ANYONE WITHOUT PERMISSION.
DO NOT SCALE OFF THIS DRAWING. ANY DISCREPANCIES TO BE REPORTED TO MANNING ELLIOTT PARTNERSHIP.

REVISIONS:
A 2021-08-01 First issue.

MANNINGELLIOTT
PARTNERSHIP

Chartered Architects & Designers

Manelli House, Suite 1
Cowper Road, Penrith
Cumbria CA11 9BN

t: 01768 868 800
e: post@manning-elliott.co.uk
w: manning-elliott.co.uk

project title:
MOORLEYS, Egremont CA22 2UA
Proposed refurbishment of farmhouse and conversion of barn

drawing title:
Proposed sash window details.
drainage details.

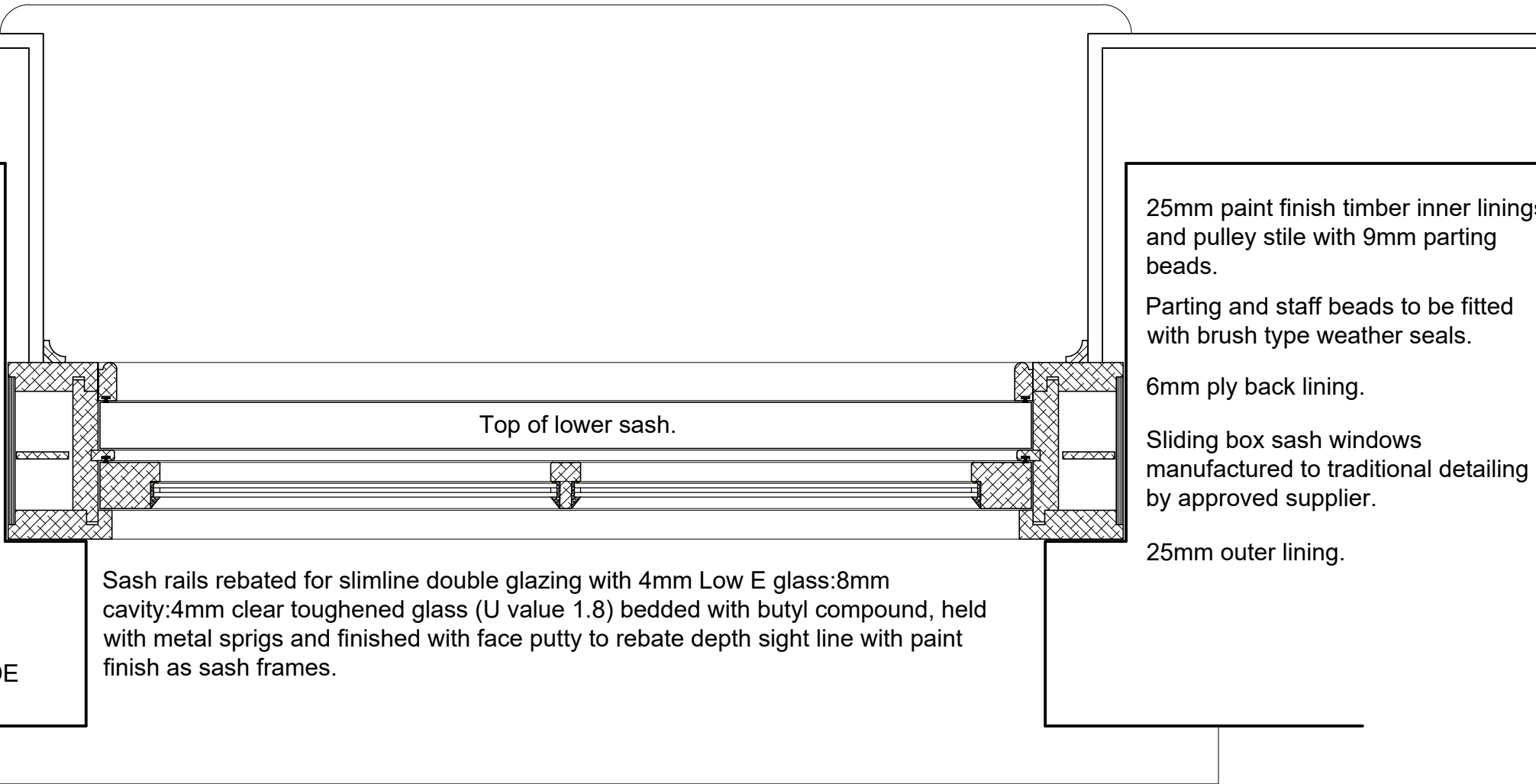
issue stage:

Construction

date: Aug. 2021
drawn: GLS
scale @ A2: 1:5

drawing number: 2102-C-701
revision: A

NOTE:
Windows to be manufactured to site dimensions.
Frames sizes and profile details to match existing windows.
Safety glazing to be used in locations within 800mm of finished floor levels as required by the Building Control Approved Documents.
All frames to be gloss white painted finish.



Horizontal section thro. window frame.

25mm paint finish timber inner linings and pulley stile with 9mm parting beads.

Parting and staff beads to be fitted with brush type weather seals.

6mm ply back lining.

Sliding box sash windows manufactured to traditional detailing by approved supplier.

25mm outer lining.

Sash rails rebated for slimline double glazing with 4mm Low E glass:8mm cavity:4mm clear toughened glass (U value 1.8) bedded with butyl compound, held with metal sprigs and finished with face putty to rebate depth sight line with paint finish as sash frames.