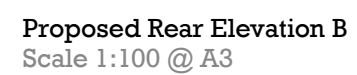


Drawings subject to relevant statutory approvals.

All dimensions to be checked on site. Do not scale from this drawing. Work to figured dimensions only.

A horizontal beam of total length 5 m is shown. It is divided into five equal segments of 1 m each. The segments are shaded alternately: the first, third, and fifth segments are shaded gray, while the second and fourth segments are white. The beam is labeled with 0 at the left end and 5 M at the right end, with intermediate labels at 1, 2, 3, and 4.



Drawing No. > 2021-010-20 Rev > **A**