

SCHEDULE OF MATERIALS

MAIN BUILDING:

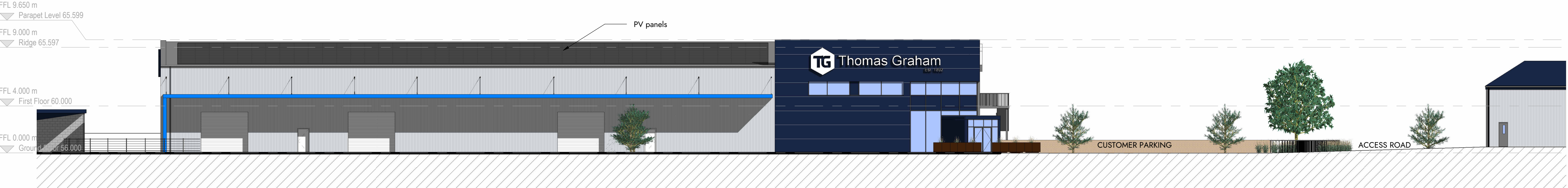
- Walls:
- Shop: Brick plinth with composite wall cladding. Colour: blue
 - Despatch: Brick plinth with composite wall cladding. Colour: grey

- Roof:
- Composite roof cladding. Colour: grey
 - Main building to have solar panels to both sides of roof pitch.

- Windows:
- Aluminium framed windows. Colour: grey

- Doors:
- Aluminium framed entrance doors and personnel doors. Colour: grey
 - Aluminium goods in /out doors. Colour: grey

- Rainwater goods:
- Aluminium powder coated rainwater goods. Colour: grey



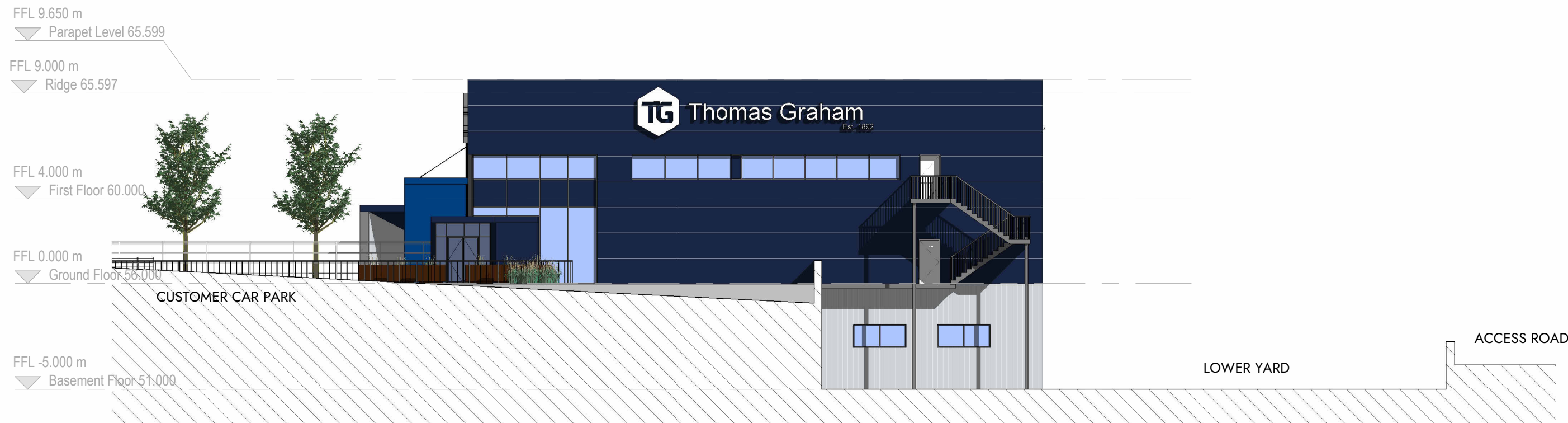
East Elevation - Shop Entrance / Goods In and Out

1 : 200



West Elevation - Basement Entrance

1 : 200



North Elevation - Shop / Offices

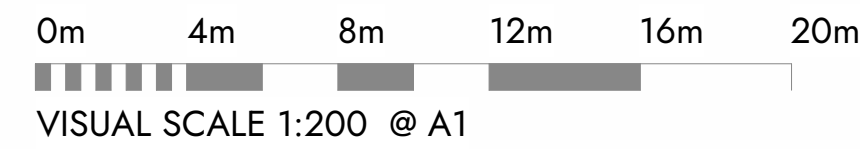
1 : 200



South Elevation - Pallet Store

1 : 200

Proposed Elevations Thomas Graham, Egremont



This drawing is to be read in conjunction with all related drawings. Dimensions must be checked and verified on site before commencing work or producing shop drawings. The originator must be notified immediately of any discrepancy. This drawing is copyright and remains the property of Architects Plus, and may not be reproduced in any way without written consent from Architects Plus.

Victoria Galleries, Viaduct House, Victoria Viaduct, Carlisle, Cumbria, CA3 8AN | ap@architectsplus.co.uk | 01228 515144

WWW.ARCHITECTSPUS.CO.UK

Registered Office
Victoria Galleries, Victoria House,
Victoria Viaduct, Carlisle Cumbria, CA3 8AN

Company Registration
Architects Plus (UK) Limited
Registered in England no. 4221140

Revision		Description	Drawn	Approved	Date
A	Planning Application submission	LC			08.02.23
Status					PL - Planning
Project		Client name	RIBA stage		
Thomas Graham, Egremont		Thomas Graham & Sons Ltd	3 - Developed Design		
Date	Drawn by	Scale @ A1	Drawing number	Revision	
12.01.22	LC/CM	1 : 200	20002-PL08	A	