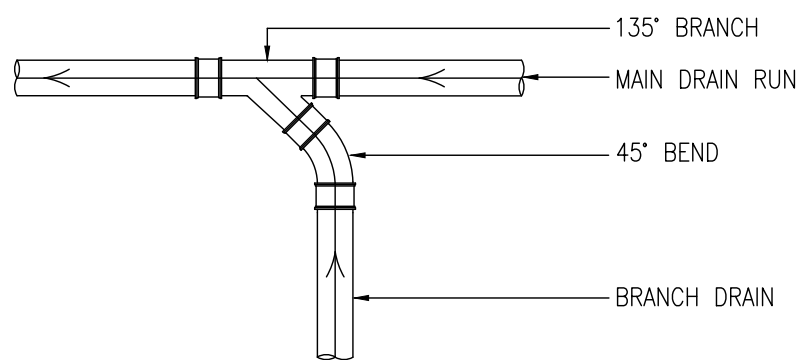


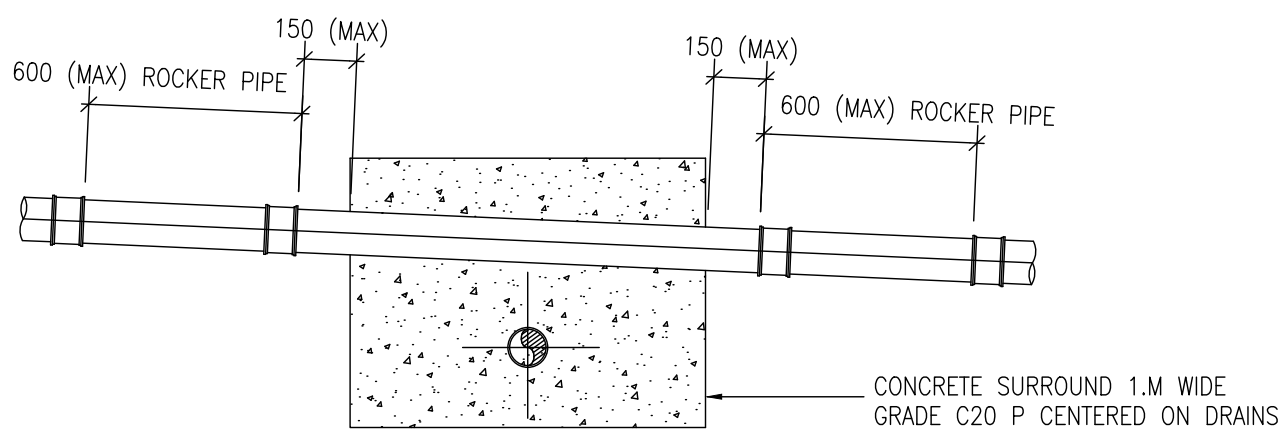
DRAINAGE NEAR BUILDINGS

RIGID PIPE TRENCH BEDDING DETAILS.

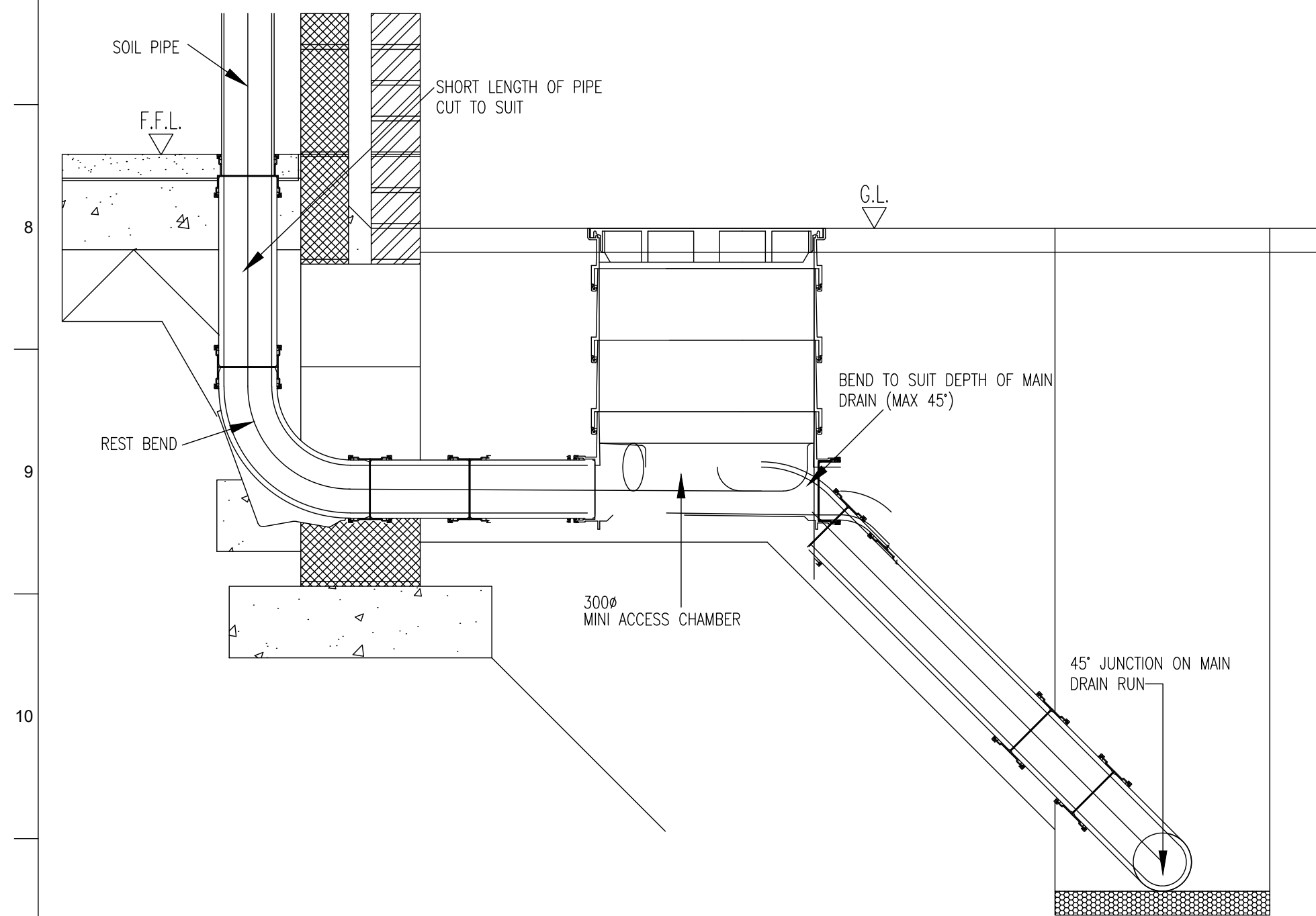
NOTES: A) Bc = OUTSIDE DIAMETER OF PIPE BARREL.
B) Y = FOR UNIFORM SOILS:
SLEEVE JOINTED PIPES, MIN. 50mm OR 1/6Bc, WHICHEVER IS THE GREATER.
SOCKETED PIPE, MIN. 100mm OR 1/6Bc, WHICHEVER IS THE GREATER UNDER BARRELS AND NOT LESS THAN 50mm UNDER SOCKETS.
FOR ROCK OR MIXED SOILS CONTAINING ROCK BANDS, BOULDERS, STONES OR OTHER IRREGULAR HARD SPOTS:
SLEEVE JOINTED PIPES, MIN. 150mm OR 1/4Bc, WHICHEVER IS THE GREATER.
SOCKETED PIPE, MIN. 200mm OR 1/4Bc, WHICHEVER IS THE GREATER UNDER BARRELS AND NOT LESS THAN 150mm UNDER SOCKETS.



CONNECTION BETWEEN BRANCH DRAIN AND MAIN DRAIN RUN

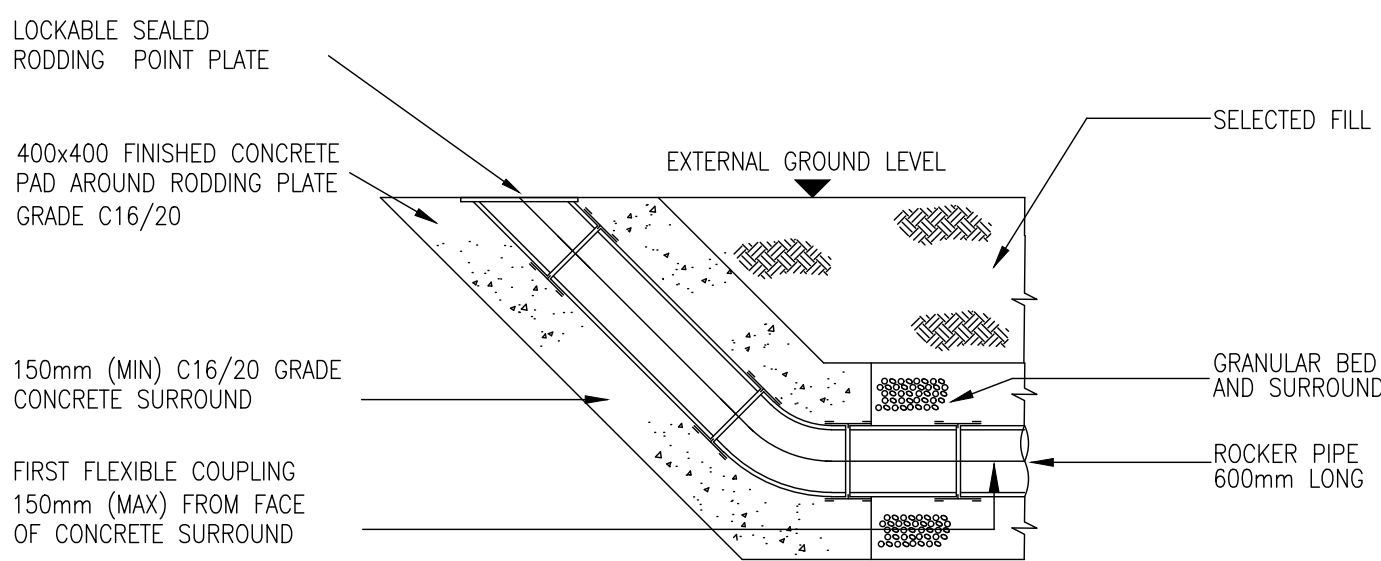


DRAIN CROSSING WITH LESS THAN 300mm CLEARANCE

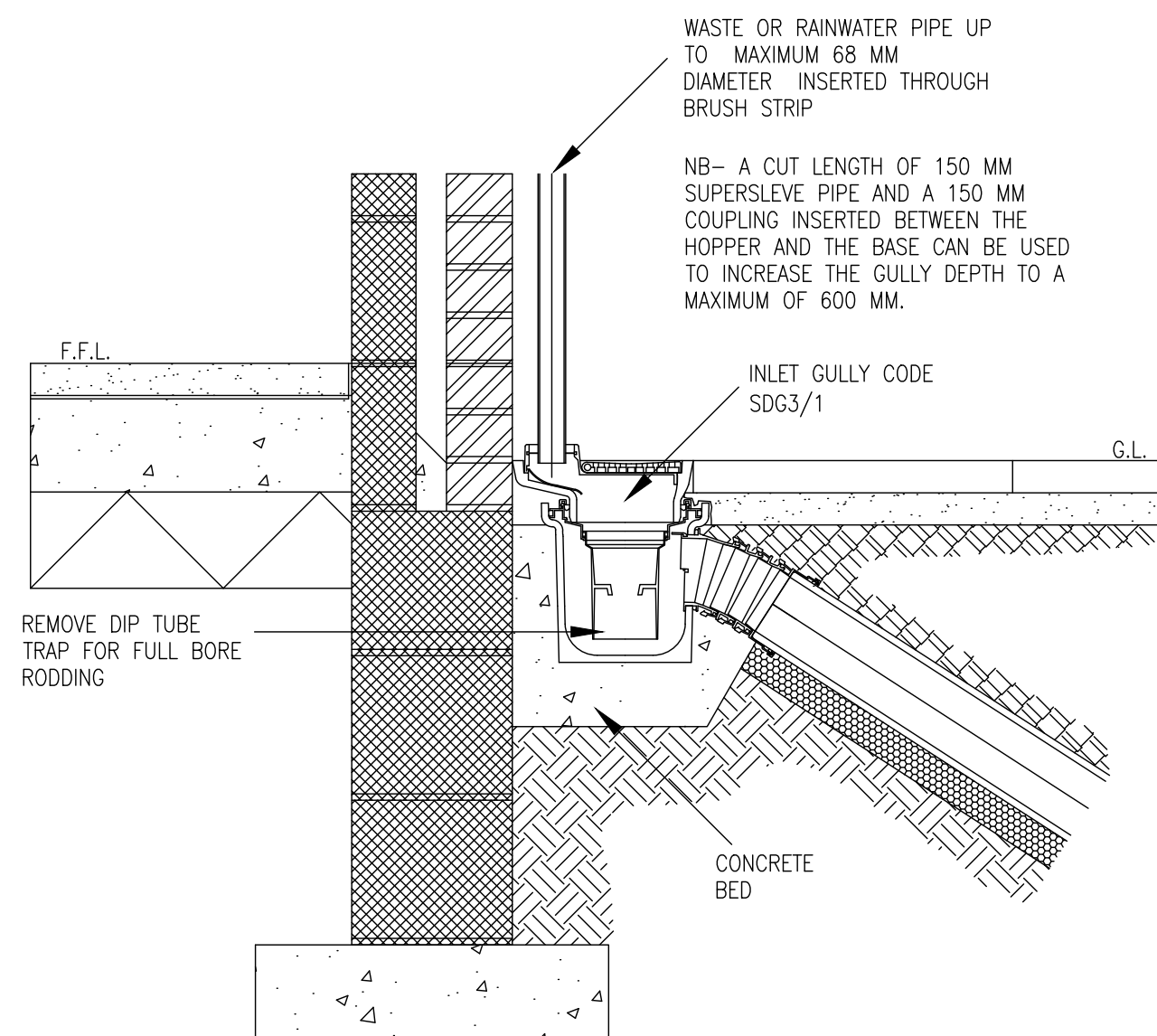


MINI ACCESS CHAMBER CONNECTION TO MAIN DRAIN RUN

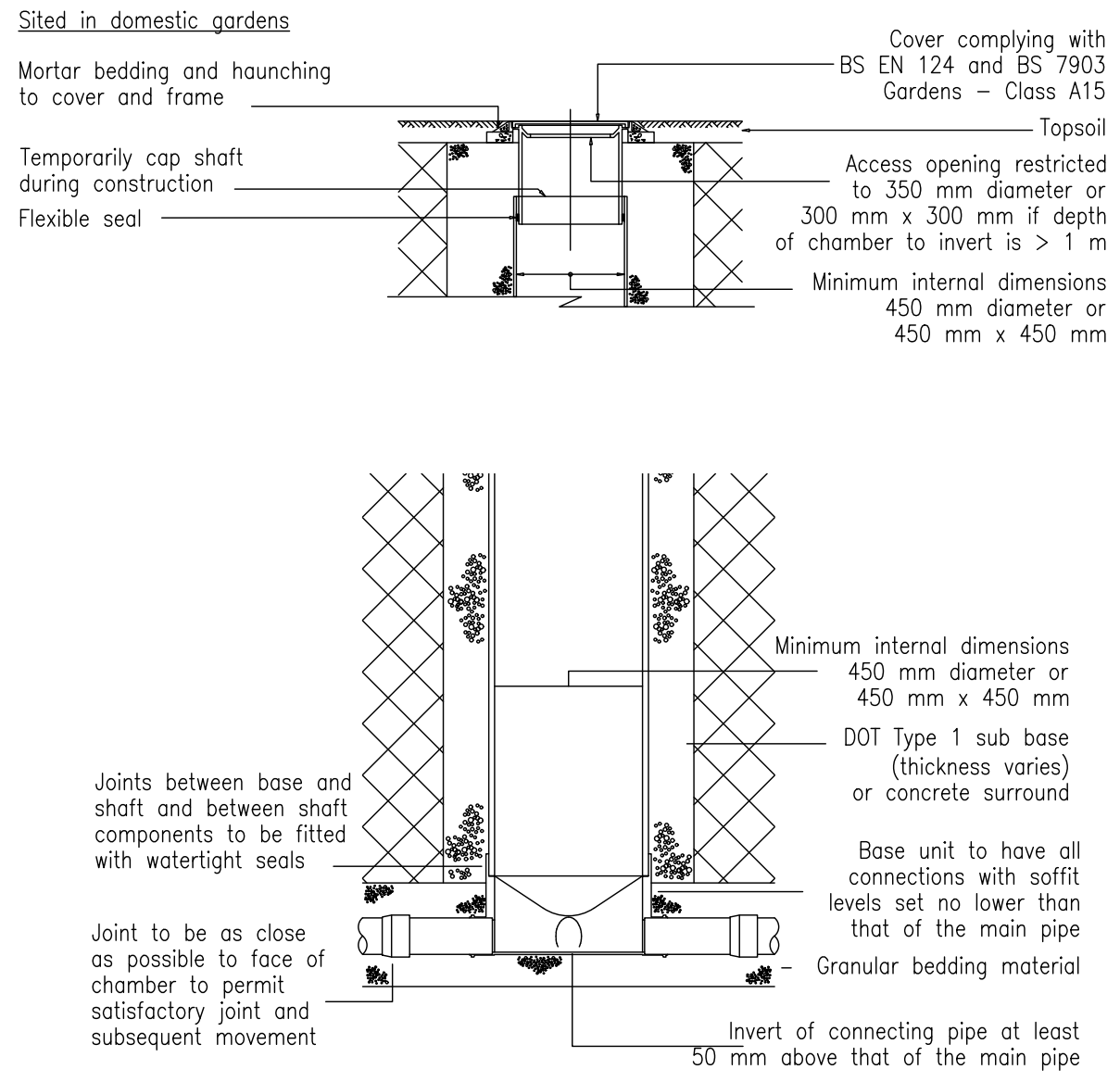
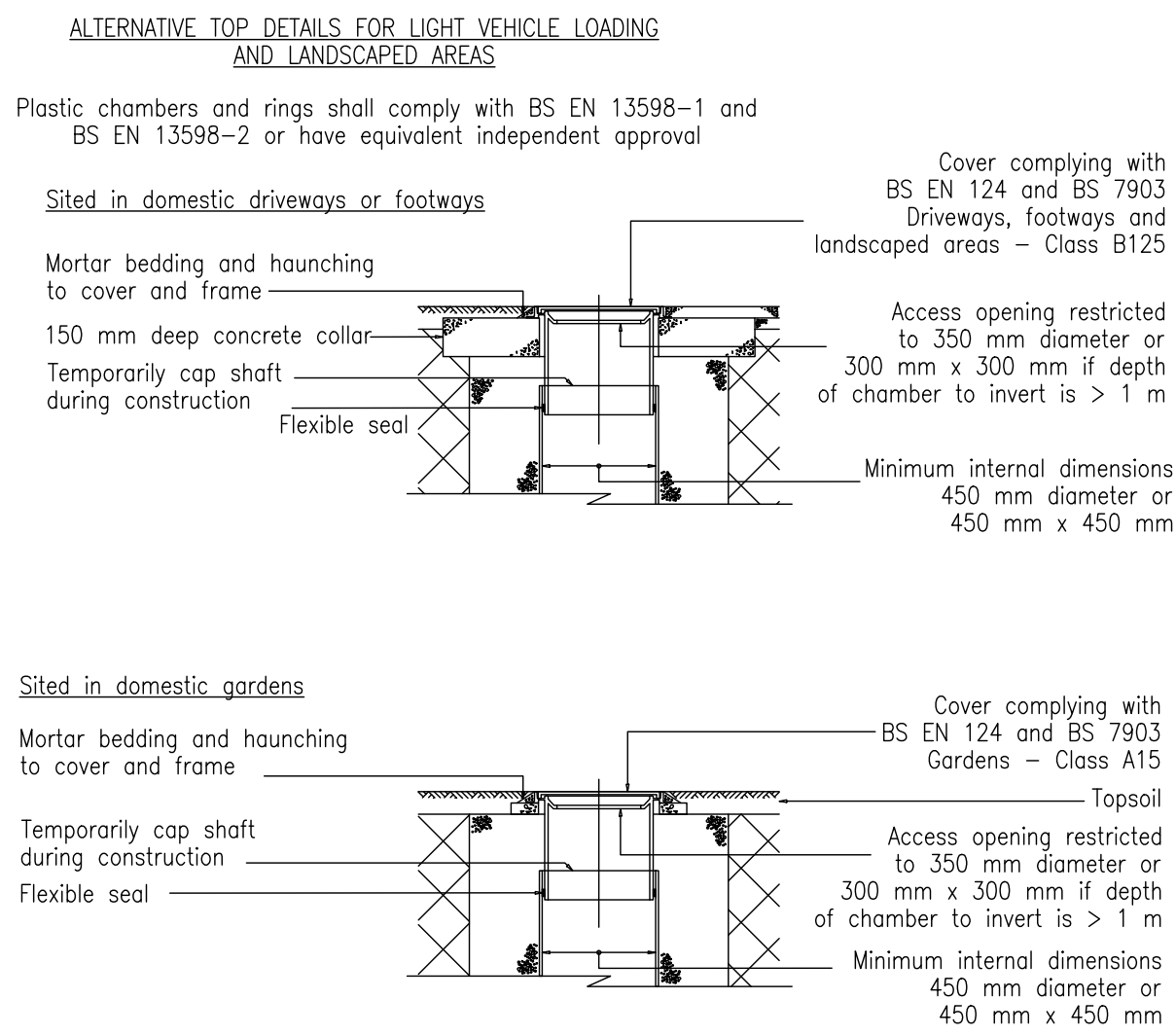
SCALE 1:10



EXTERNAL RODDING POINT



INLET GULLY
MAXIMUM DEPTH 600mm



T1	18/05/18	Tender Issue	PL	PL	RH
Issue	Date	Description	By	Chkd	Appd
<div><div><div>COAST</div><div>CONSULTING ENGINEERS</div></div><div>Office 4, 11 New Quay, North Shields, NE29 6LQ. rh@coastconsult.co.uk pl@coastconsult.co.uk 0191 5977879</div><div>Client</div><div>MR R.W. MULHOLLAND</div></div>					
Job Title					
FLOSH MEADOWS					
Drawing Title					
Drainage Construction Details Sheet 2 of 4					
Scale at A1					
1:20					
Discipline					
Drawing Status					
TENDER					
Job No	1842	Drawing No	52	Issue	T1