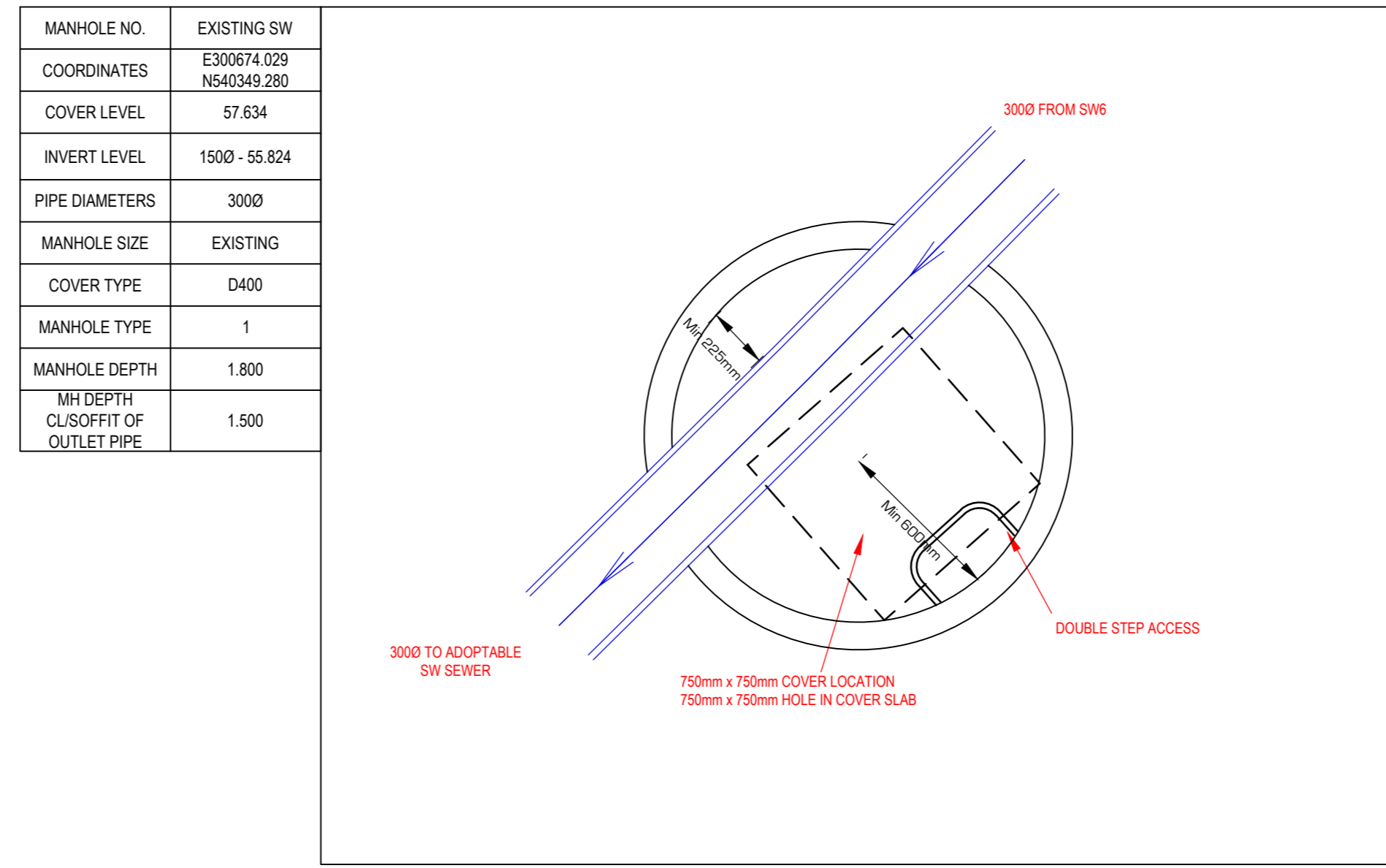
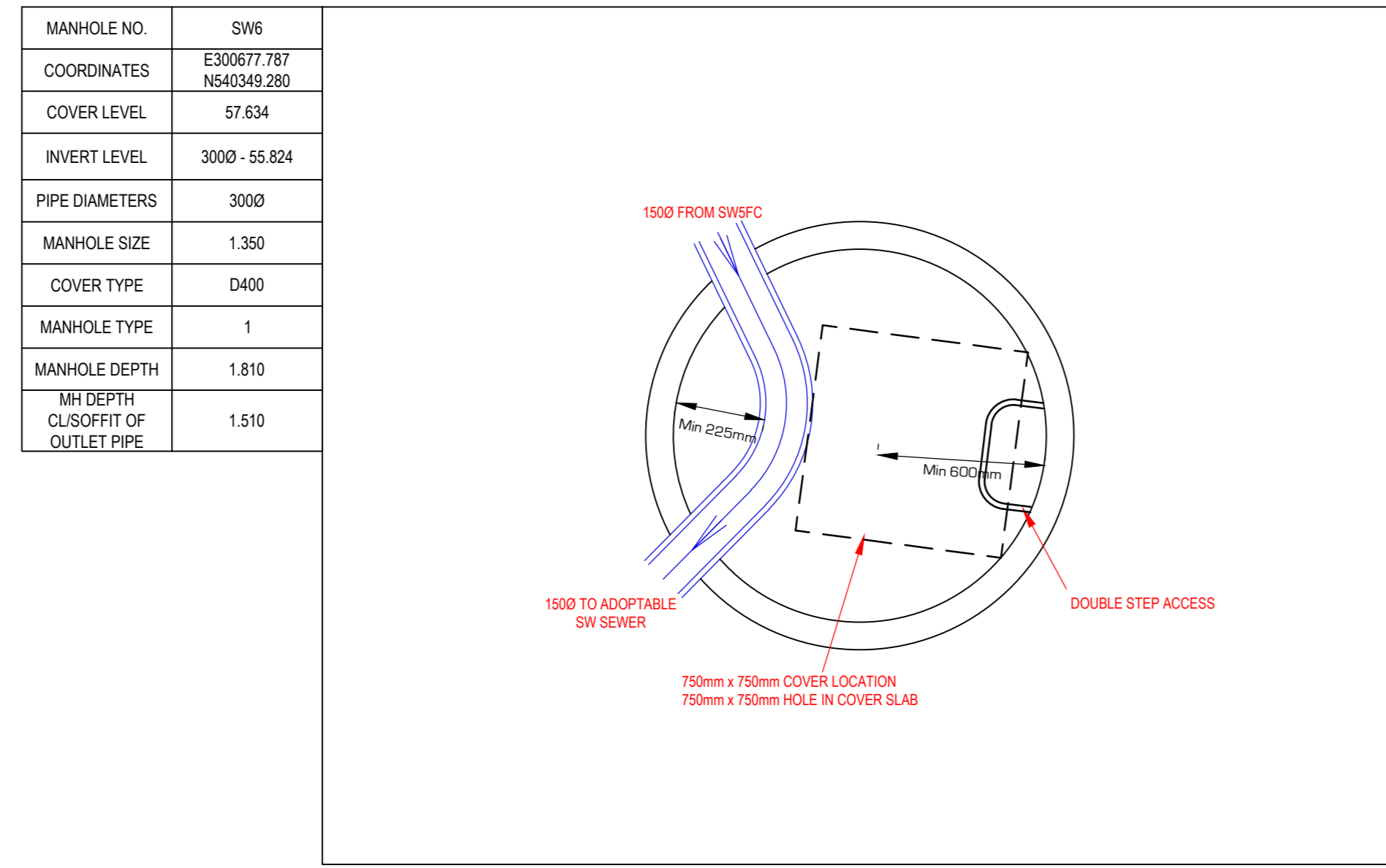
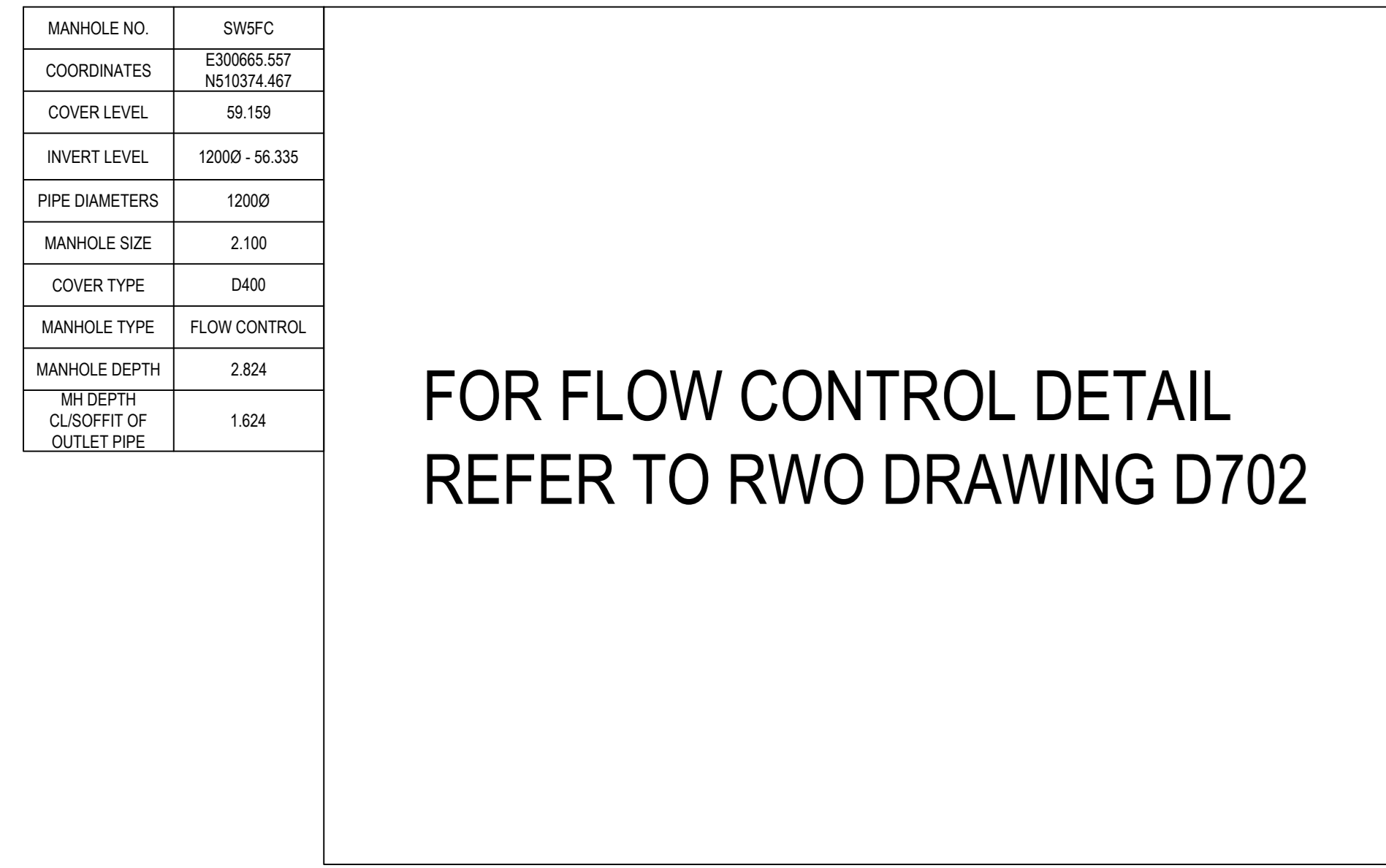
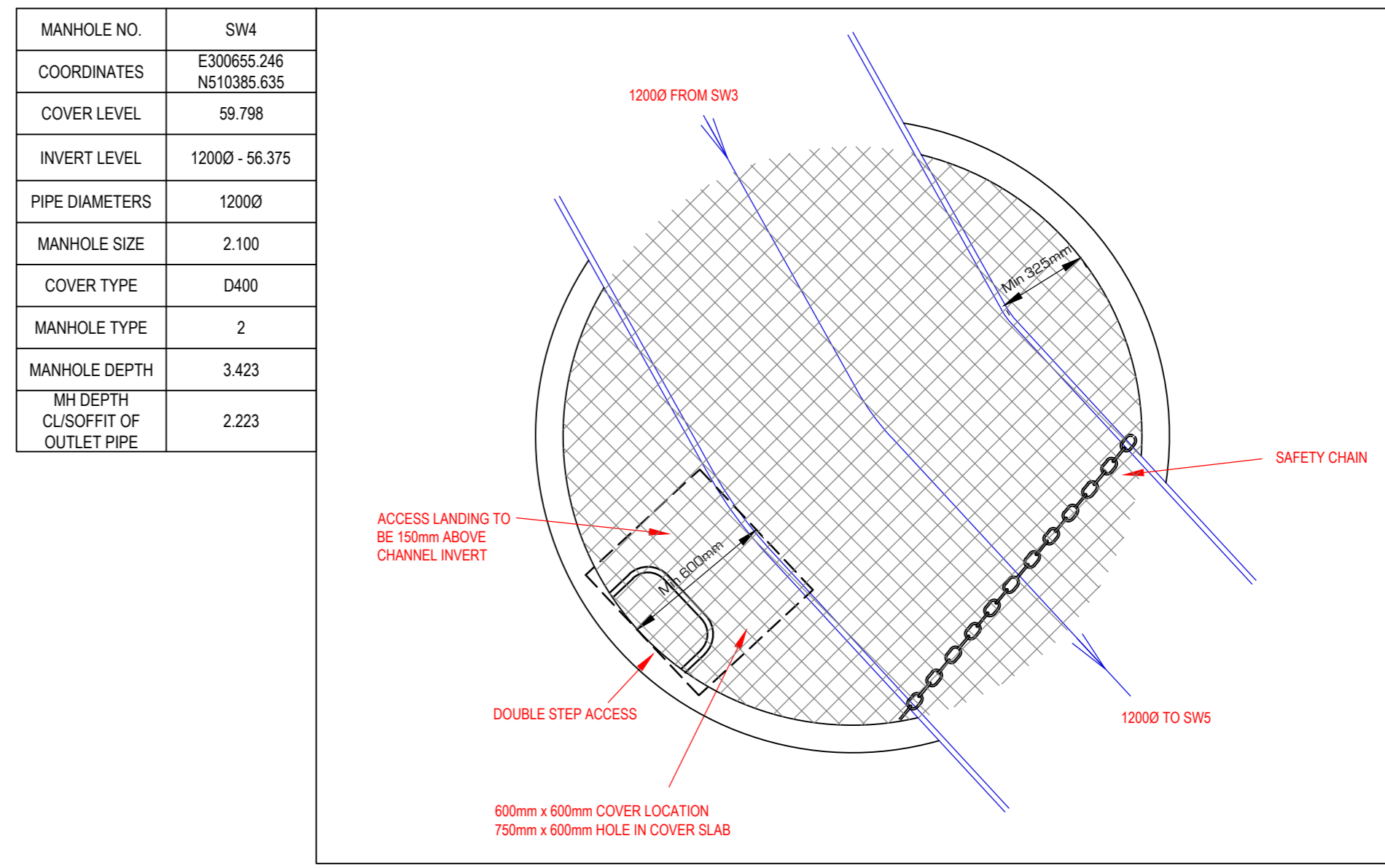
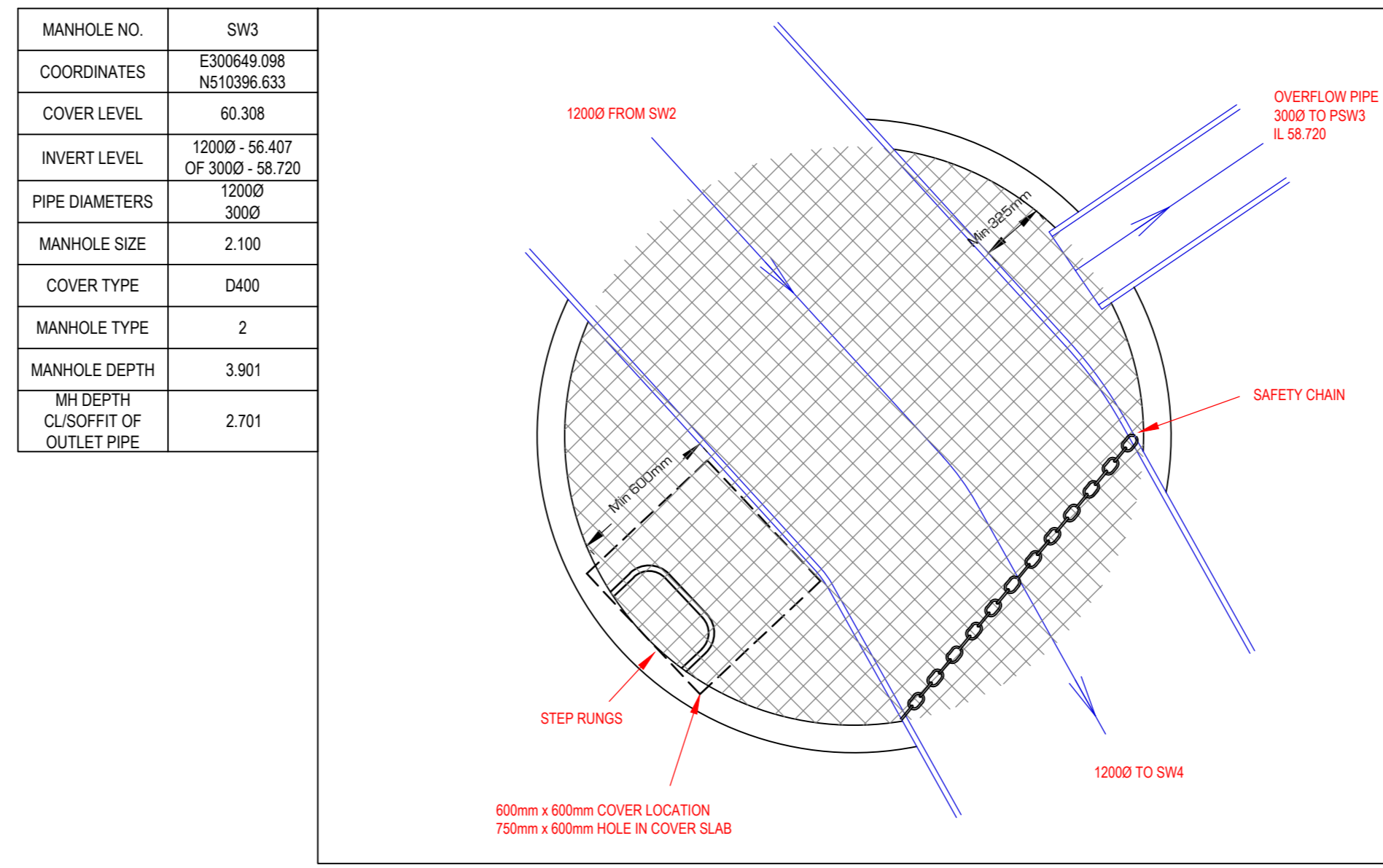
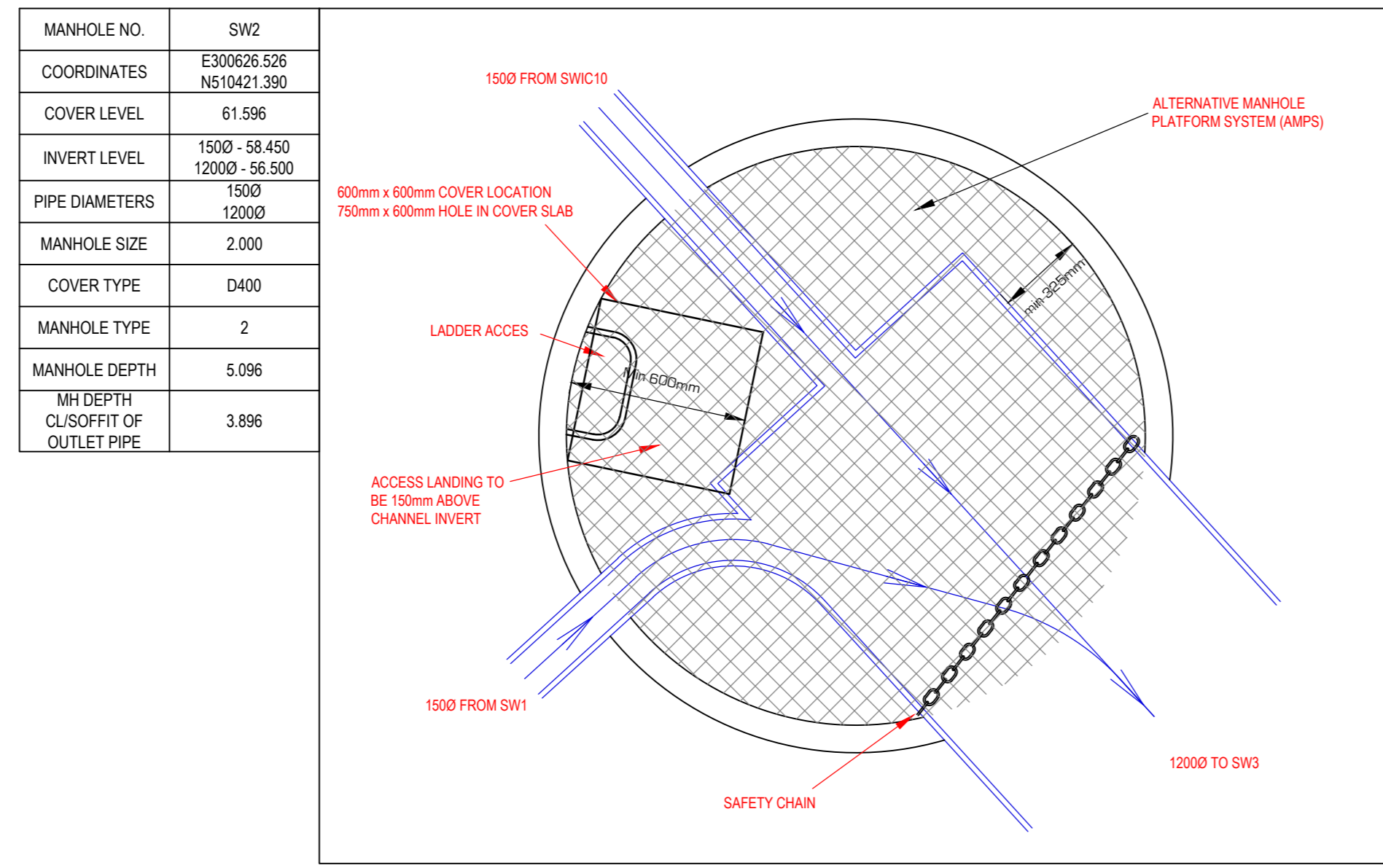
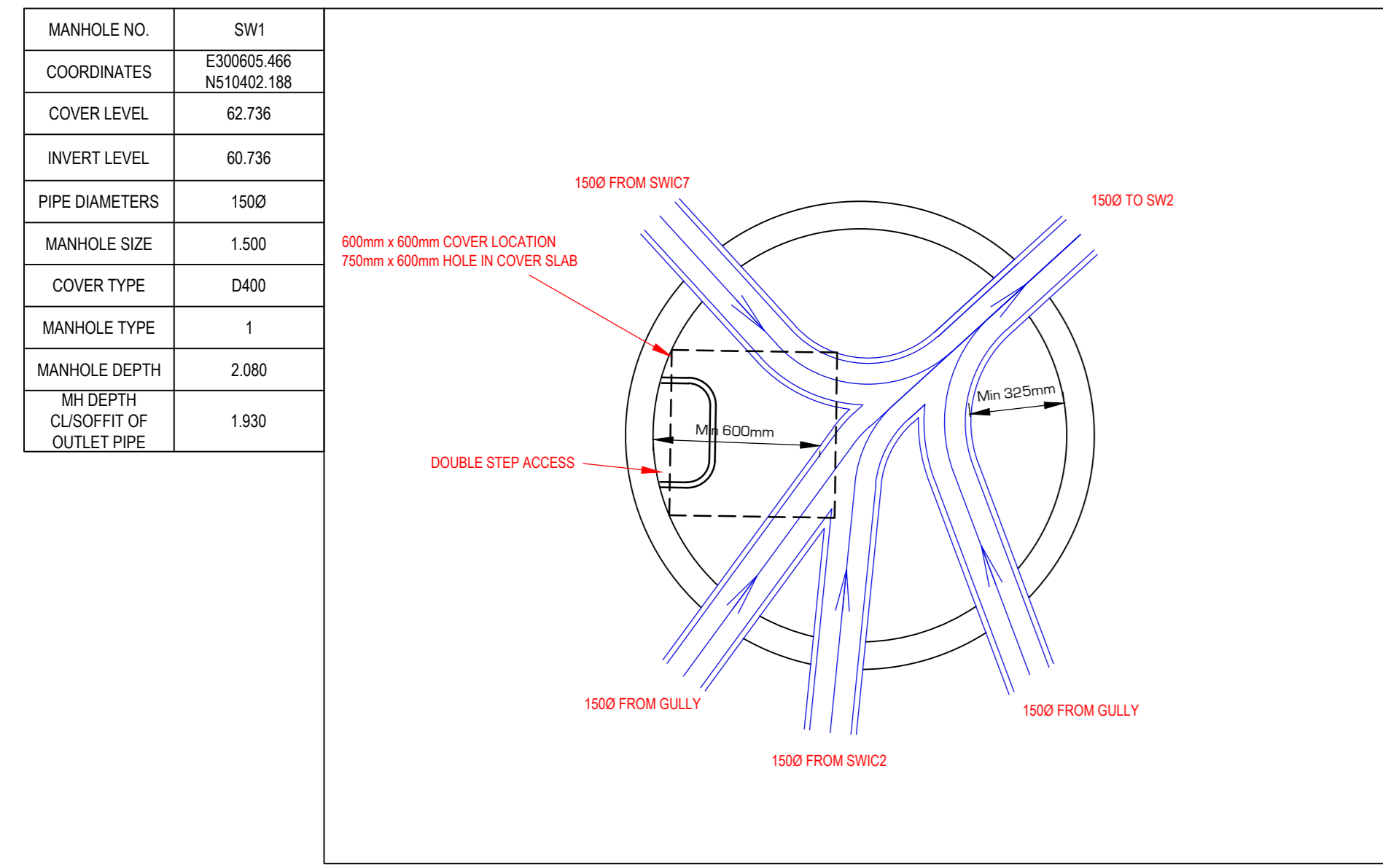
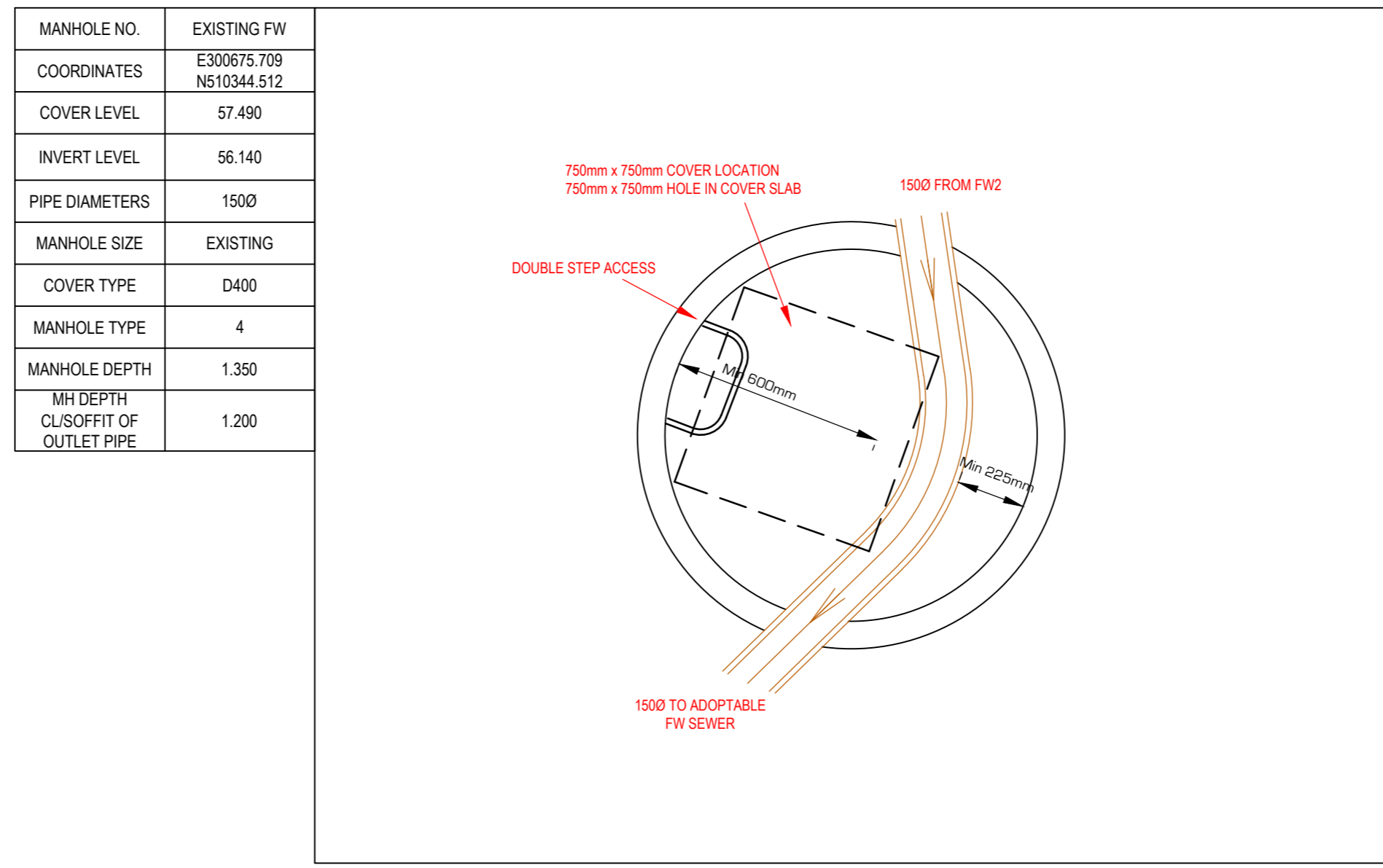
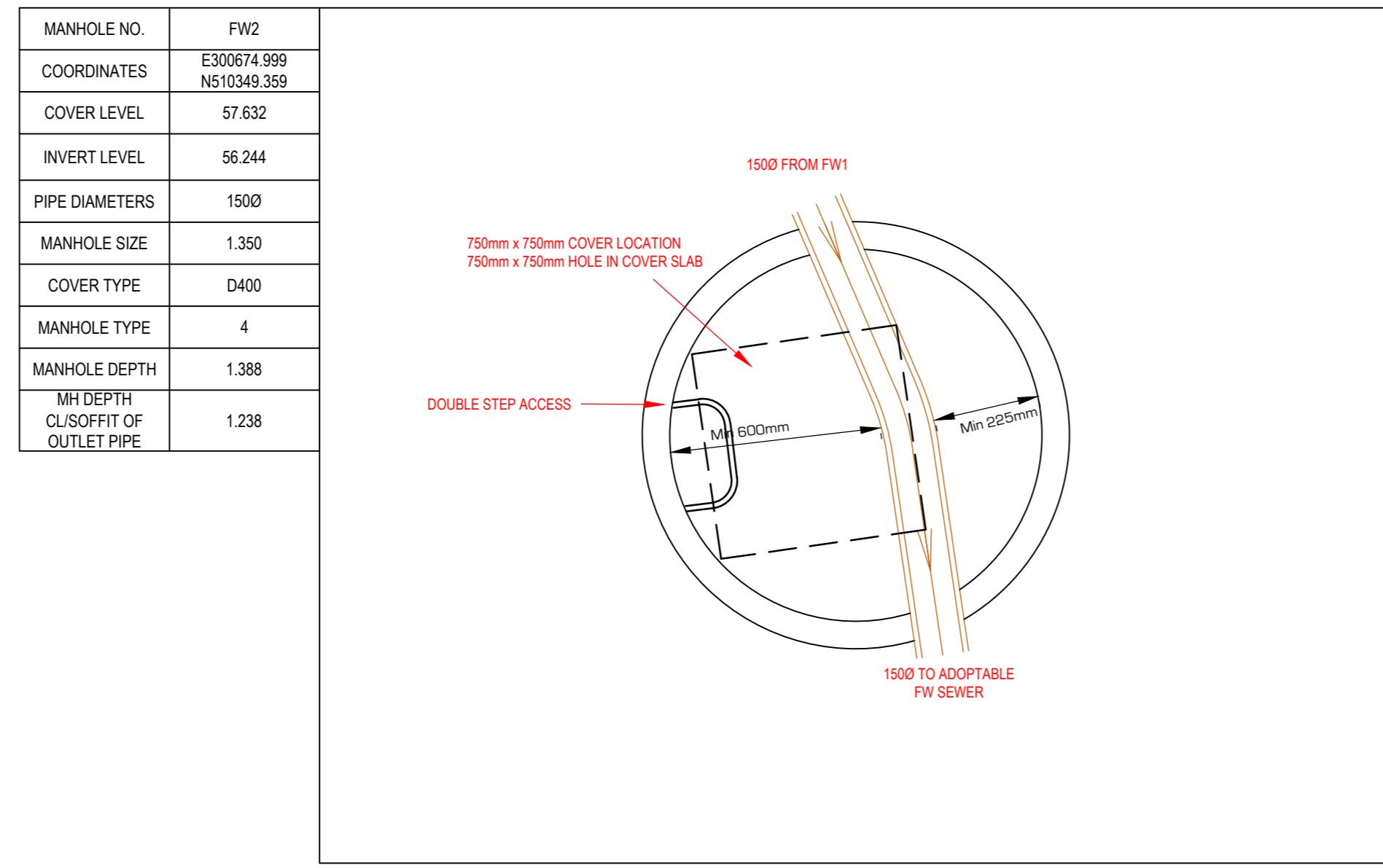
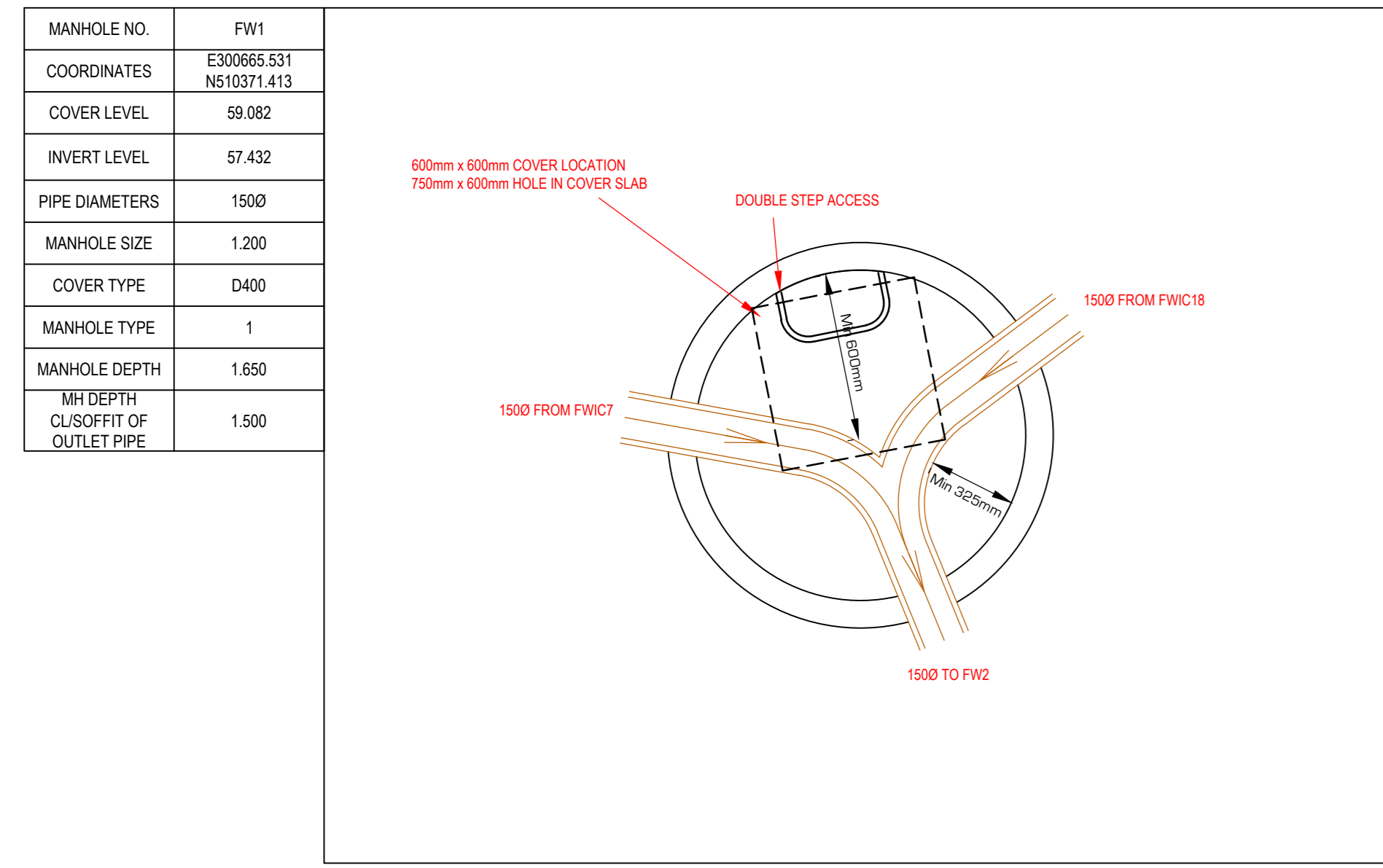


ADOPTABLE SURFACE WATER 1:20 MANHOLE DETAILS



ADOPTABLE FOUL WATER 1:20 MANHOLE DETAILS



- NOTES**
- ALL DIMENSIONS ARE IN MILLIMETRES
 - CONCRETE BENCHING AND SURROUND**
SHALL BE PLACED IN SINGLE CONTINUOUS OPERATION FROM TOP OF BASE SLAB TO TOP OF BENCHING AND PIPE SURROUND.
 - CONNECTION INTO MANHOLES**
SHALL BE CONSTRUCTED WITH THE SOFFITS AT THE LEVEL UNLESS DETAILED DIFFERENTLY ON CONTRACT DRAWINGS.
 - METALWORK**
LADDERS, HANDRAILING AND SAFETY CHAIN SHALL BE AS SHOWN ON LU STANDARD DETAIL STD001002
 - CONCRETE SURROUND TO MANHOLES**
A 150mm SURROUND OF AT LEAST 20mm CONCRETE SHALL BE PROVIDED UP TO TOP DESIGN WATER LEVEL. ANY JOINTS SHOULD BE STAGGERED WITH PRECAST CONCRETE JOINTS.
 - MINIMUM LENGTH OF CHANNEL (L MIN)**

CHAMBER DIA.	X' MIN
1200	800
1300	1000
1500	1100
1800	1150
2100	1300
2400	1450
2700	1500
3000	1700
 - OUT ENDS OF REINFORCED CONCRETE PIPES**
SHALL BE TREATED WITH EPOXY RESIN PAINT/MORTAR
 - MANHOLE ACCESSES AND VARIABLE FEATURES (L.V.)**
REFER TO LU STANDARD STANDARD DETAIL STD001010. DOUBLE STEPS SHALL BE PLASTIC ENCAPULATED CARBON STEEL.
 - COVER AND FRAME**
150mm DEEP COVERS ARE TO BE USED IN CATEGORY 1, 2, 3 ROADS
150mm DEEP COVERS ARE TO BE USED IN CATEGORY 4 ROADS
DOUBLE TRIANGULAR COVERS ARE TO BE USED IN CARRIAGEWAY
ROAD CATEGORY TO BE DESIGNATED BY THE HIGHWAY AUTHORITY.
FRAME TO BE SET AS PER SPECIFICATION.
 - CONCRETE**
ALL IN SITU CONCRETE TO BE GC-3 OR FWD-3
 - ALL LATERAL CONNECTIONS TO BE SOFFIT LEVEL TO THE MAN CHAMBER.

NOMINAL SIZE	EFFECTIVE LENGTH (mm)
150 TO 500	600
600 TO 750	1000

SHORT AND ROCKER PIPE LENGTHS TABLE
APPLICABLE TO ALL MANHOLE TYPES

KEY

FLOW DIRECTION

NOTE:
MANHOLE CO-ORDINATES RELATE TO THE INTERSECTION OF MAIN INLET AND OUTLET RUNS

PIPE MATERIALS

- 150-2500 UPVC PIPES TO BE B8 RETANKED AND CERTIFIED TO MS 43-01 & BS EN12201
- 250-3000 CONCRETE PIPES TO BE B8 RETANKED, CLASS 30 CONCRETE & CERTIFIED TO BS811 & 1916
- REINFORCING: COMPOSITE STEEL REINFORCED PIPE (AQUAPRA) TO BE B8 RETANKED & CERTIFIED TO BS EN12448

SUBJECT TO WATER AUTHORITY APPROVAL

06.02.20	ISSUED TO SLIP (U) COMMENTS	KRS	AE	3
17.02.20	ISSUED TO MANHOLES ADDED, WITH QUITS REMOVED	KRS	AE	2
07.02.20	FIRST ISSUE	KRS	AE	1
Date	Revisions	Drawn	Checked	Rev

Dep Status: **PRELIMINARY**

NORTH EAST
(019 258632)

YORKSHIRE
0113 333 3500

RWO
CONSULTING ENGINEERS
www.rwo.co.uk
R/W GROUP

Client: **MJ GLEESON**

Project: **FELL VIEW DRIVE
EGREMONT**

Title: **1:20 MANHOLE DETAILS**

DO NOT SCALE | Scale @ A2: 1:20 | Drawn: KRS | Checked: AE | Date: 06.02.2020

Job No: **18184** | Dep No: **D210** | Rev: **2**