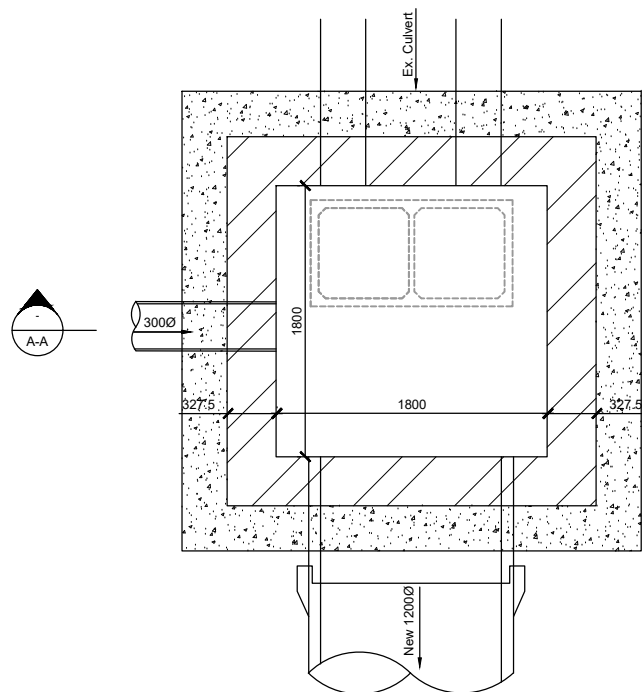
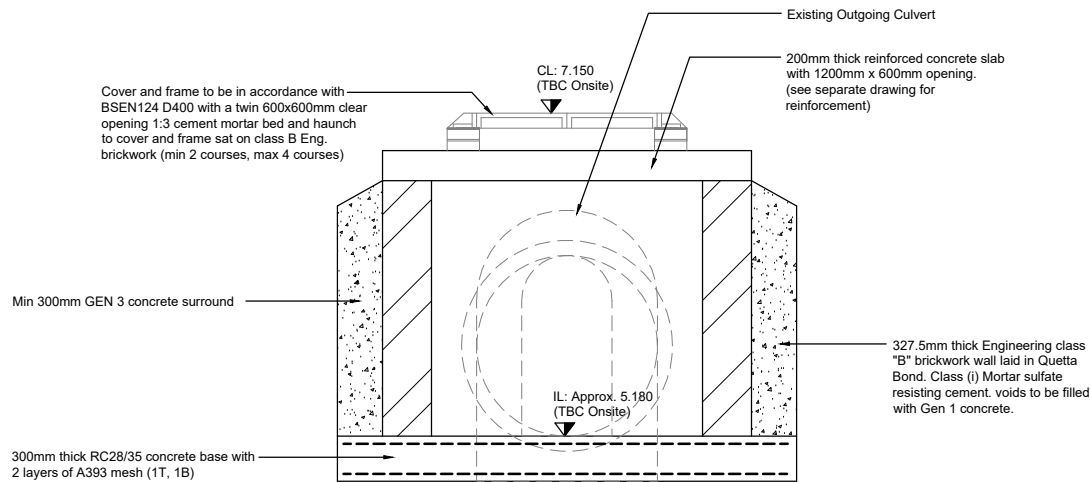


Site Specific Manhole S1
(Section A - A)
Scale 1:25

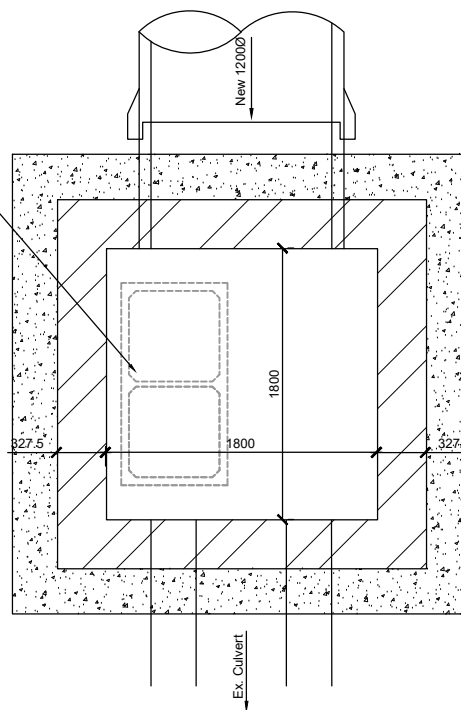


Site Specific Manhole S1
(Plan View)
Scale 1:25



Site Specific Manhole S2
(Section B - B)
Scale 1:25

Cover and frame to be in accordance with BSEN124 D400 with a twin 600x600mm clear opening 1:3 cement mortar bed and haunch to cover and frame sat on class B Eng. brickwork (min 2 courses, max 4 courses)



Site Specific Manhole S2
(Plan View)
Scale 1:25

DO NOT SCALE

Notes

All levels shown are in metres and are relative to ordnance datum.

Invert levels and accurate positioning of all existing chambers and connection points including existing pipes are to be confirmed and engineer advised prior to commencement of any Drainage Works.

Concrete bed and surround is required to all gully leads and to all pipes in highways/hardstanding where cover to pipe <1200mm.

All pipes to be either extra strength V.C. to BS 65 or pvc to BS 4660 or BS 5481 'UPONOR ULTRARIB' or concrete pipes Class 120 to BS 5911.

All RWP / pop up positions must be confirmed with architects details.

All existing drainage that is not to be used in the proposed scheme to be grubbed up and removed from site in accordance with current best practices.

All SW Drains to be 100Ø U.N.O

All FW Drains to be 100Ø U.N.O

Δ S.H.E.

Do not excavate until all underground services have been identified and marked out. Refer to service providers drawings and to the utilities survey drawings. Unknown underground services may exist. Check for services by carrying out a scan with a cable avoidance tool. (CAT Scan)

Reference Drawings

17T2239-100 - External Works Plan
17T2239-101 - Drainage Plan
17T2239-102 - Drainage Diversion Plan
17T2239-103 - External Works Details
17T2239-104 - Drainage Details
17T2239-105 - Site Specific Manholes S1 & S2

Issued for Construction	SR	C1	NB	19.07.2019
Issued for Tender	JJH	T1	NB	28.11.2018
Issued for Comment	JJH	P1	NB	29.10.2018
AMENDMENT	BY	REV	CHK	DATE

Rev P = Preliminary T = Tender C = Construction LCI = Last Construction Issue

In instances where this drawing completes or partly completes a contract, Billinghurst George & Partners will consider that its product has been validated, unless in a period not exceeding 90 working days, the client advises to the contrary.

Client
Energy Coast

Project
BEC Innovation Warehouse

Drawing Title
Site Specific Manholes S1 & S2

Drawn	J. Herbert	Date	October 2018
Checked	N. Baines	Date	October 2018
Scale	1:25	Original Size	A1

bgp Billinghurst George & Partners
CIVIL & STRUCTURAL ENGINEERS
BUILDING SURVEYORS
1st Floor, Wellington House, Wellington Court,
Stockton-on-Tees, TS18 3TA
T 01642 876 470 @BGPConsulting
E consulting@bgp-leesside.co.uk - W www.bgp-consulting.co.uk

Drg. No. 17T2239-105 Rev. C1