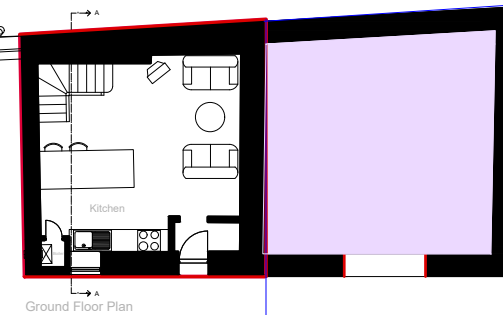
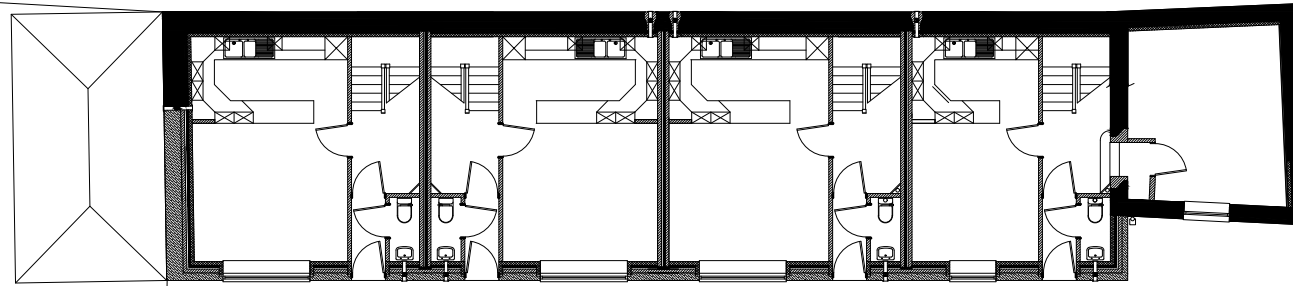


To north

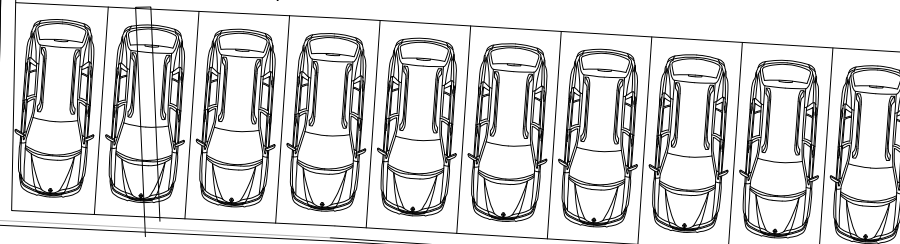
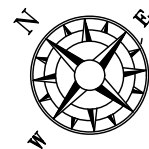
B 5295

To south

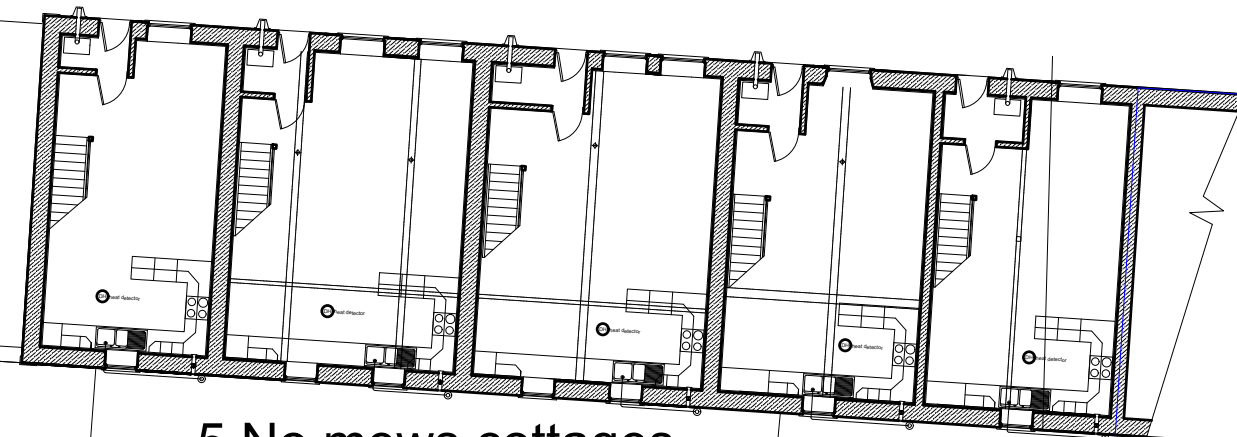


Cuddy W  
Cottag

This store belongs to the  
applicant and can be used  
as parking for the  
application site the  
applicant has full rights of  
access to this site.



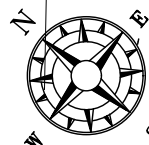
bins



5 No mews cottages

Keekle  
House

PROPOSED BLOCK PLAN



Extra visitors  
parking  
For change of use  
application only

LOCATION PLAN 1/1250 scale

SCALE BAR 1/200 ORIGINAL DRAWING SIZE A3	0.0	2.0	4.0	6.0	8.0	10.0	12.0	14.0	16.0	18.0	20.0 metres		80.0 metres	70.0	60.0	50.0	40.0	30.0	20.0	10.0	0.0	SCALE BAR 1/500
SCALE BAR 1/100	0.0	1.0	2.0	3.0	4.0	5.0	6.0	7.0	8.0	9.0	10.0 metres		400.0 metres	350.0	300.0	250.0	200.0	150.0	100.0	50.0	0.0	SCALE BAR 1/2500
SCALE BAR 1/50	0.0	1.0	2.0	3.0	4.0	5.0	6.0	7.0	8.0	9.0	10.0 metres		400.0 metres	350.0	300.0	250.0	200.0	150.0	100.0	50.0	0.0	SCALE BAR 1/2500

THE SITE OFFICE NO.6 KEEKLE  
MEWS KEEKLE HOUSE KEEKLE  
CUMBRIA CA25 5RJ

BLOCK AND LOCATION PLANS

Rev A Previously approved parking  
removed. Additional parking on owners land  
description changed.

Scale:  
Date:  
DWG No.

1/200 @ A3  
FEB 2023  
23/0366/3

REV A  
04/05/2023

Geoffrey Wallace Limited FCSD MCIAT  
Architectural Design and Technology  
Mobile 07816046756  
geoffreywallaceltd@gmail.com