

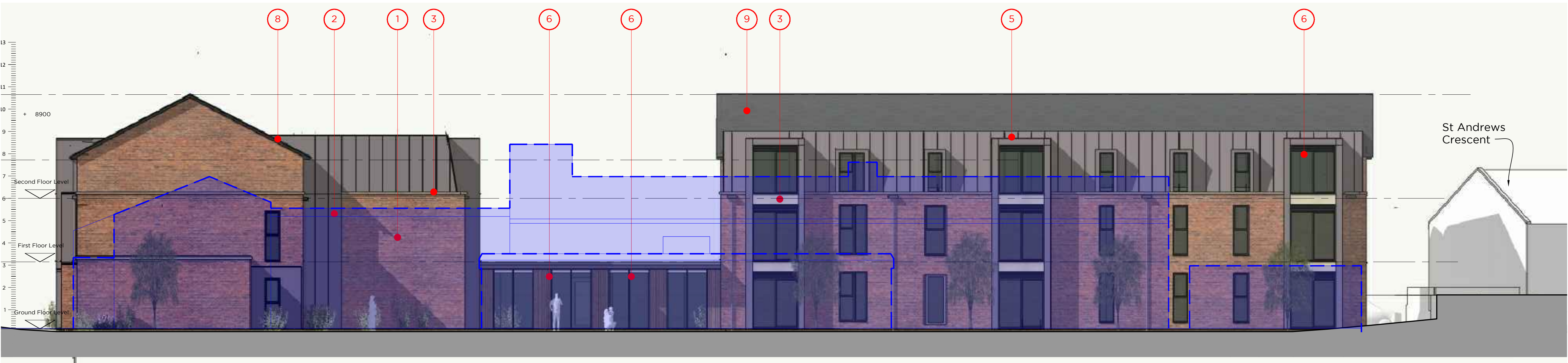
Sketch proposals are for illustrative purposes only & as such are subject to detailed site investigation including ground conditions / contaminants, drainage, design & planning/density negotiations. Sketch proposals may be based upon enlargements of OS sheets & visual estimations of existing site features, accuracy will therefore need to be verified by survey. Sketch proposals have not been considered in respect of CDM Regulations.

This drawing and the building works depicted are the copyright of Staniforth Architects Ltd. and may not be reproduced or amended except by written permission. No liability will be accepted for amendments made by other persons.

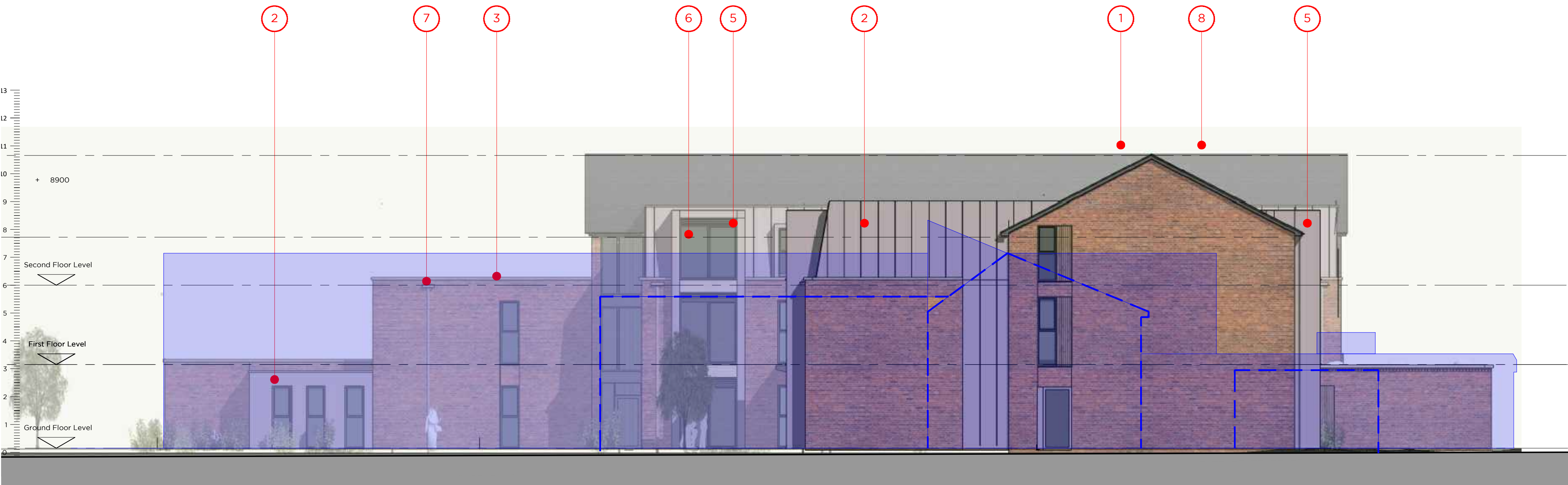
# FOR PLANNING

0 1 5 10  
Metres at scale 1:100

Revision	Date	Notes
A	04.04.21	Sections of pitched roof omitted
B	28.07.21	Roof pitch, eaves and floor levels reduced




1. SOUTH



2. EAST

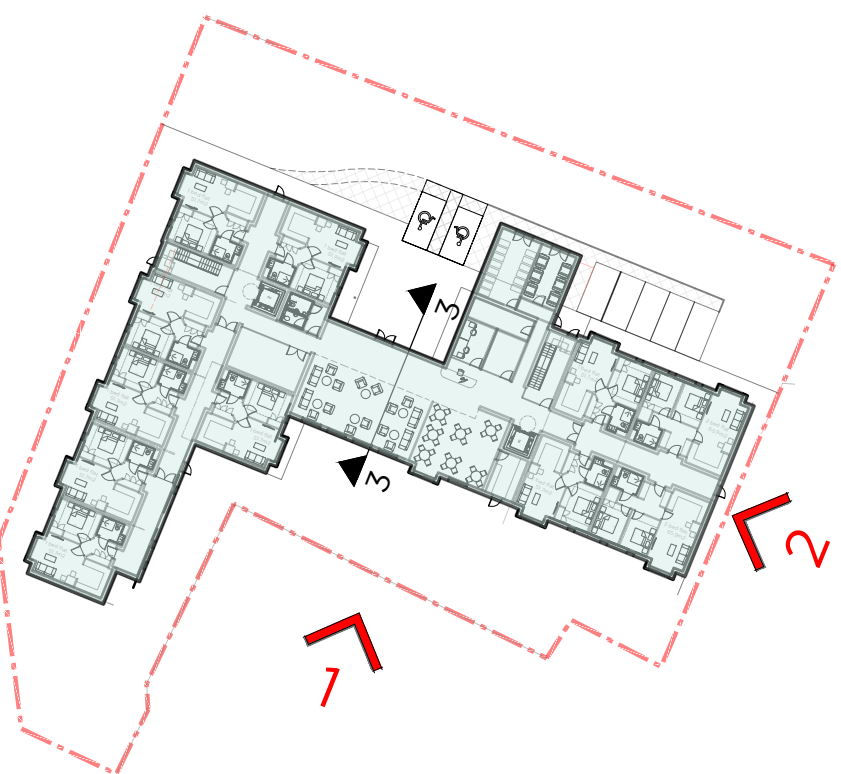
## MATERIALS

1. Red/brown coloured (multi) facing bricks
2. Standing seam metal cladding
3. Reconstituted stone parapet cappings and lintels
4. Timber cladding
5. PPC metal window surrounds to match standing seam cladding
6. PPC glazing system - windows, external doors & entrance glazing, colour: mid grey
7. Dark grey rainwater goods
8. Dark grey UPVC fascias
9. Slate effect grey roof tiles

 Outline of existing to be demolished



2. EAST (Section through Entrance Foyer & Lounge)



## STANIFORTH ARCHITECTS

### Existing Elevation Comparison

The Warehouse 1A Stamford Street Leicester LE1 6NL 0116 2853775 www.staniforth.co.uk	Drawing Status: Cad Reference: Drawn: Checked: Date: Scale:	For Comment 1610-P01 SC IP 03-03-2021 1:100@A1
--------------------------------------------------------------------------------------------------	----------------------------------------------------------------------------	---------------------------------------------------------------

Project No.	Drawing No.	Revision
Meadow Road Whitehaven	1610	P11 B