

# DIAMOND

**SIMPLE, RELIABLE & DISCREET**  
Compact wastewater treatment plant





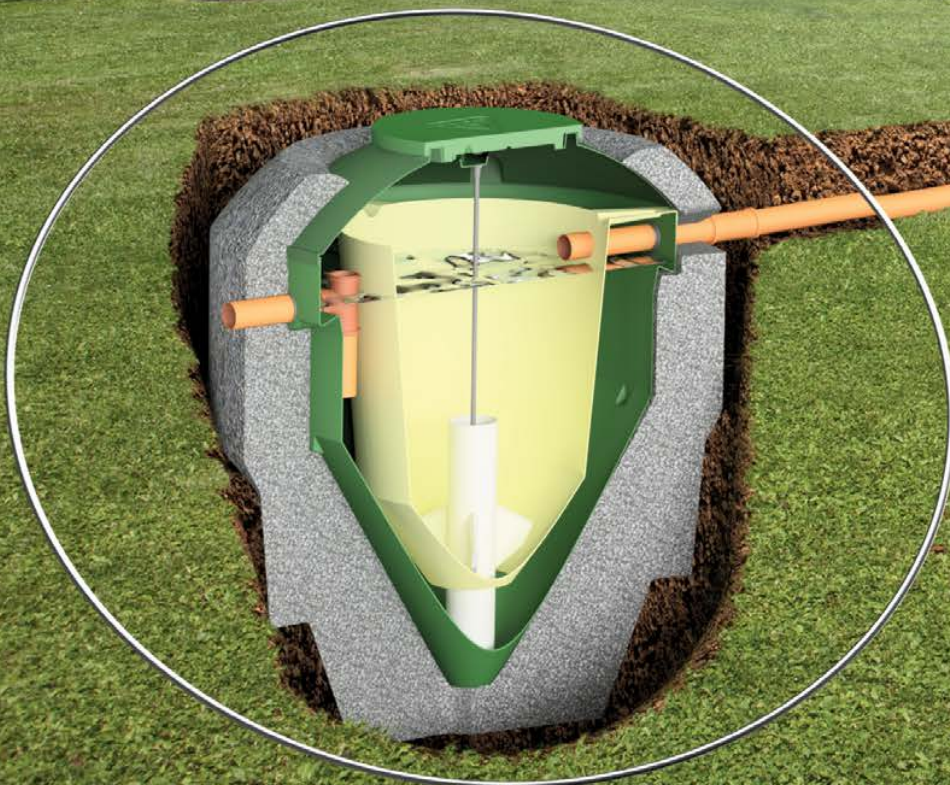
## Planning

Please ensure all necessary permissions have been granted and due consideration has been given to:

- Planning permission, building regulations, and other regulating or interested parties.
- Sizing of the plant is in line with the British Water Flows and Loads codes of practice.

## Discharging to a watercourse

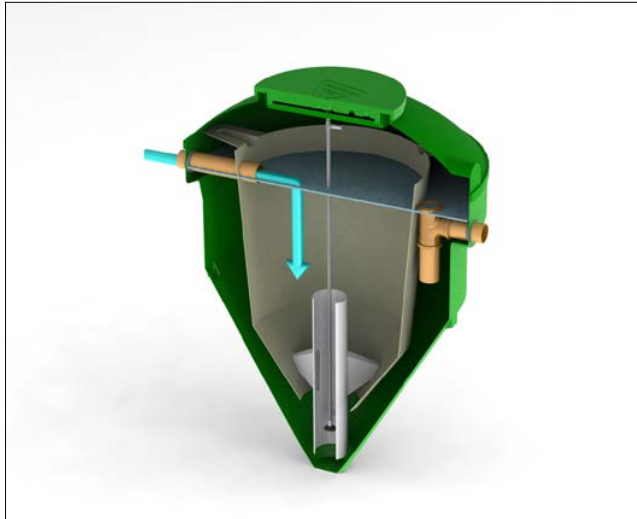
If your septic tank is discharging to a watercourse for example a river or a stream, you now need to consider an alternative option such as a package treatment plant, which treats sewage to a higher standard. Please visit your local environmental protection agency such as the Environment Agency (England), Natural Resources Wales requirements or SEPA (Scotland) for guidance.



Diamond illustration not to scale.

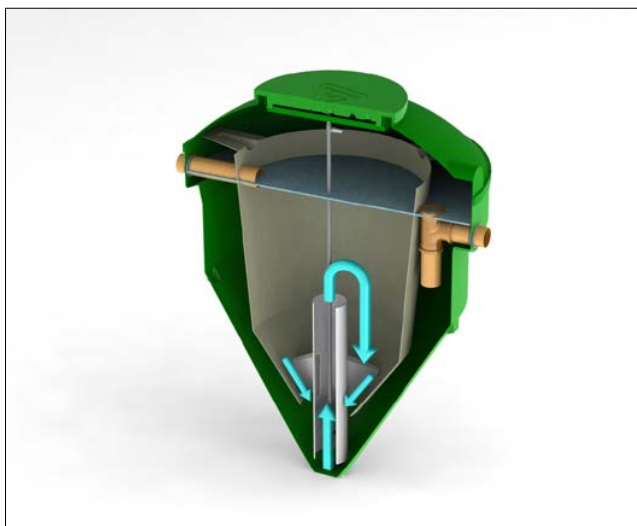
# Simple and reliable operation

---

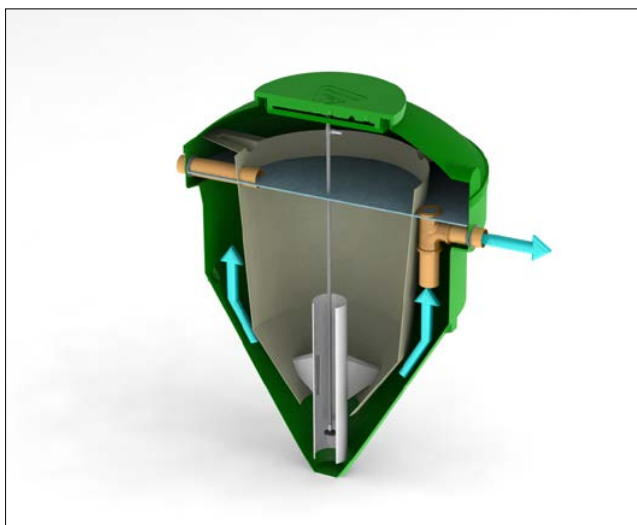


**1:** The wastewater flows into the main tank and enters directly into the bio-chamber.

The bio-chamber is a zone where the solids circulate continuously; this is achieved by air rather than mechanical or electrical parts inside the tank.



**2:** The draft tube enables the solids to be drawn back up into the central aeration chamber and re-circulated through the treatment process.



**3:** The treated liquid then exits through the dip pipe and is discharged safely in to the environment, meeting the required consent standard.

Watch how the process works:

[How the Diamond compact wastewater treatment plant works](#)



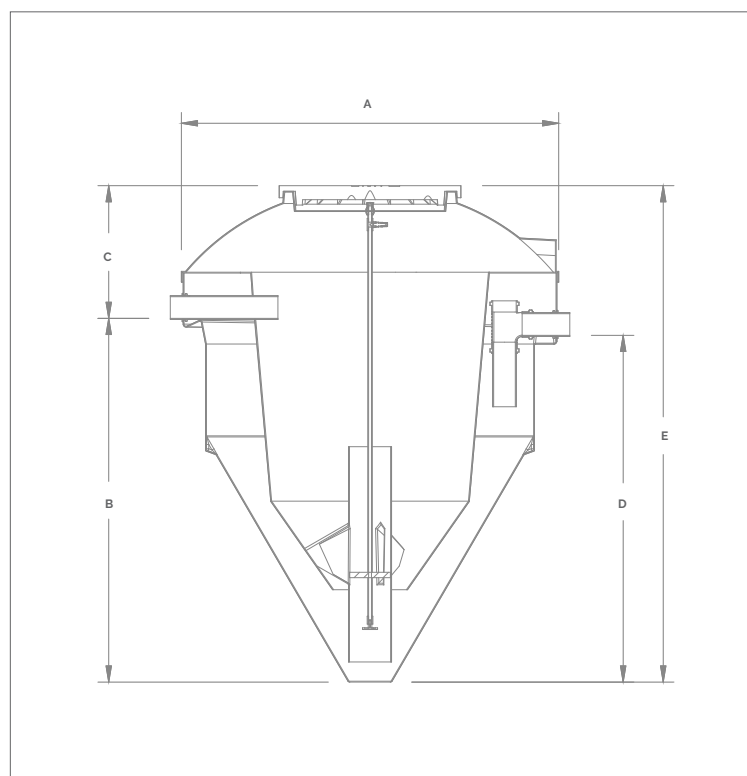
# DMS range

Our reliable DMS range caters for properties housing 1 up to 20 people. Typical uses include domestic homes and small commercial businesses such as farm shops, B&Bs and glamping sites.

The standard tank models come supplied with a weather proof kiosk and low air pressure alarm beacon and blower inside.

Model	Population	Max Outside Diameter	Height to Inlet	Inlet Invert Depth	Height to Outlet	Max Height/ In Ground Depth	Weight Empty	Total Capacity
		(A)	(B)	(C)	(D)	(E)	(KG)	(L)
<b>DMS2</b>	<b>1-6</b>	1740	1700	630	1610	2330	155	2270
<b>DMS3</b>	<b>5-11</b>	1960	1830	760	1730	2590	192	3030
<b>DMS4</b>	<b>10-15</b>	1990	2000	780	1930	2780	210	3975
<b>DMS5</b>	<b>14-20</b>	1990	2000	780	1930	2780	210	3975

• Dimensions above shown in mm  
 • Deeper inverts can be accommodated with our range of standard invert extensions.  
 • Indicative technical drawing only



Model	Blower type	Blower consumption (kW)	Kiosk consumption (kW)
<b>DMS2</b>	JDK80C	0.050	0.060
<b>DMS3</b>	JDK100C	0.075	0.080
<b>DMS4</b>	JDK150C	0.115	0.120
<b>DMS5</b>	JDK200C	0.180	0.190