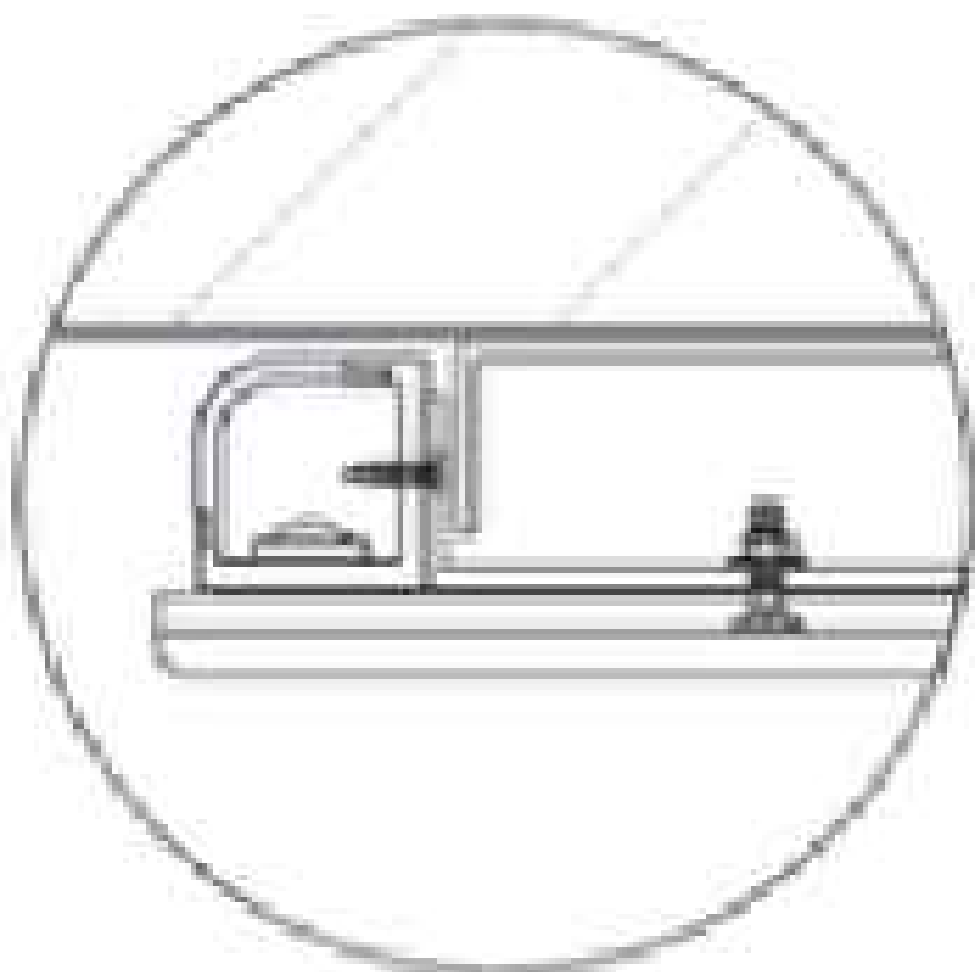
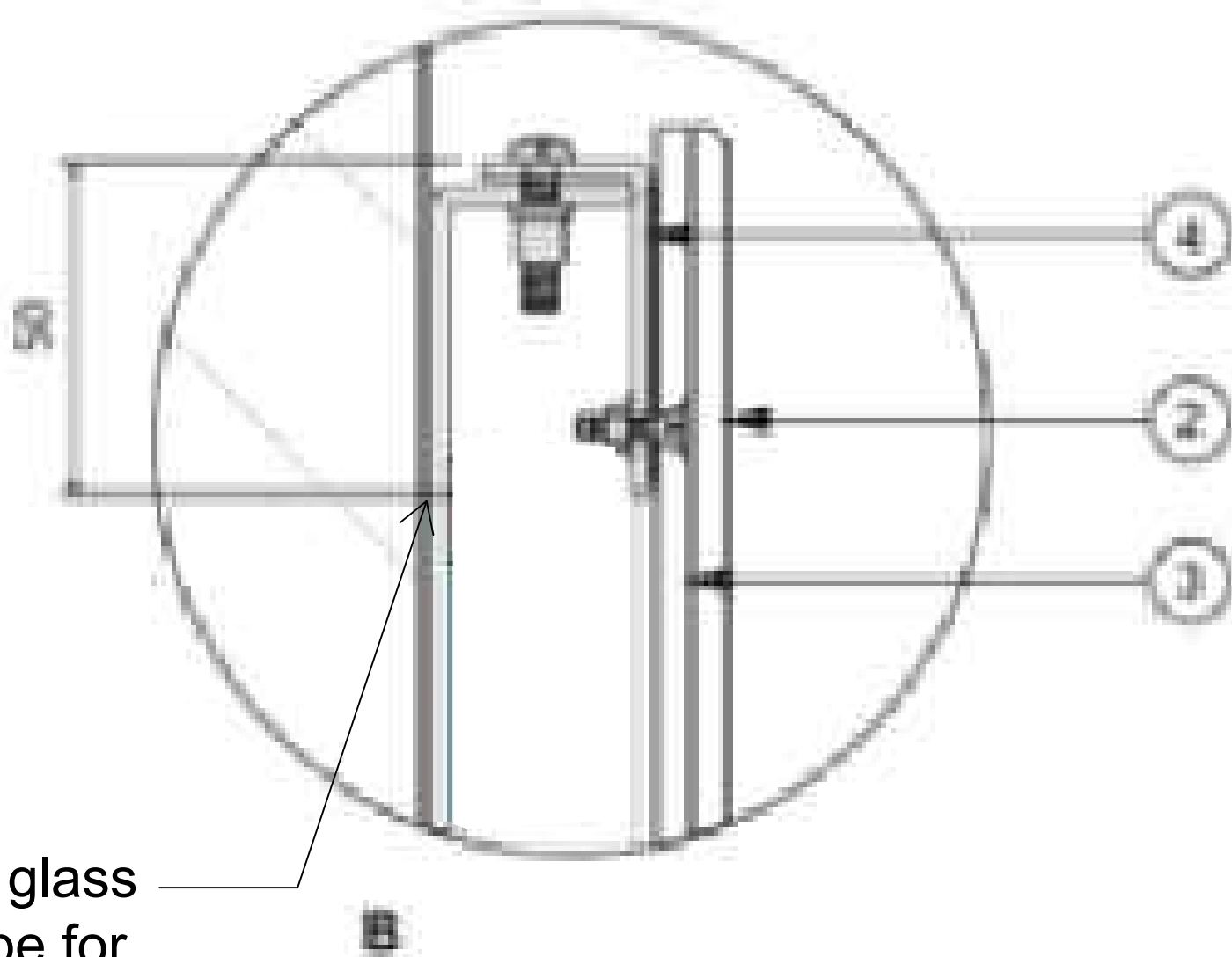
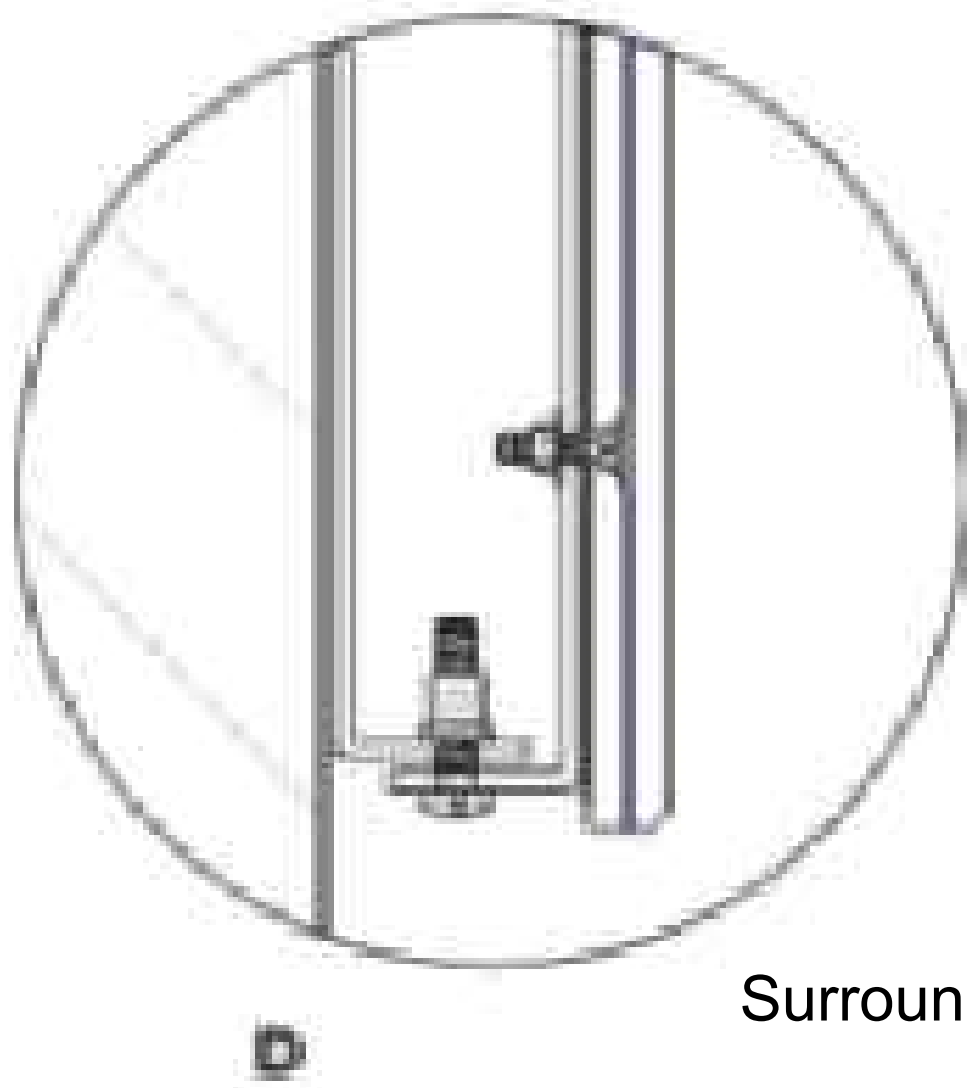


NW - EGREMONT

FIXING METHOD to be glass mounted using glass tape for site specific fixing grounds. FACE UNIT located over BACK TRAY and secured through.

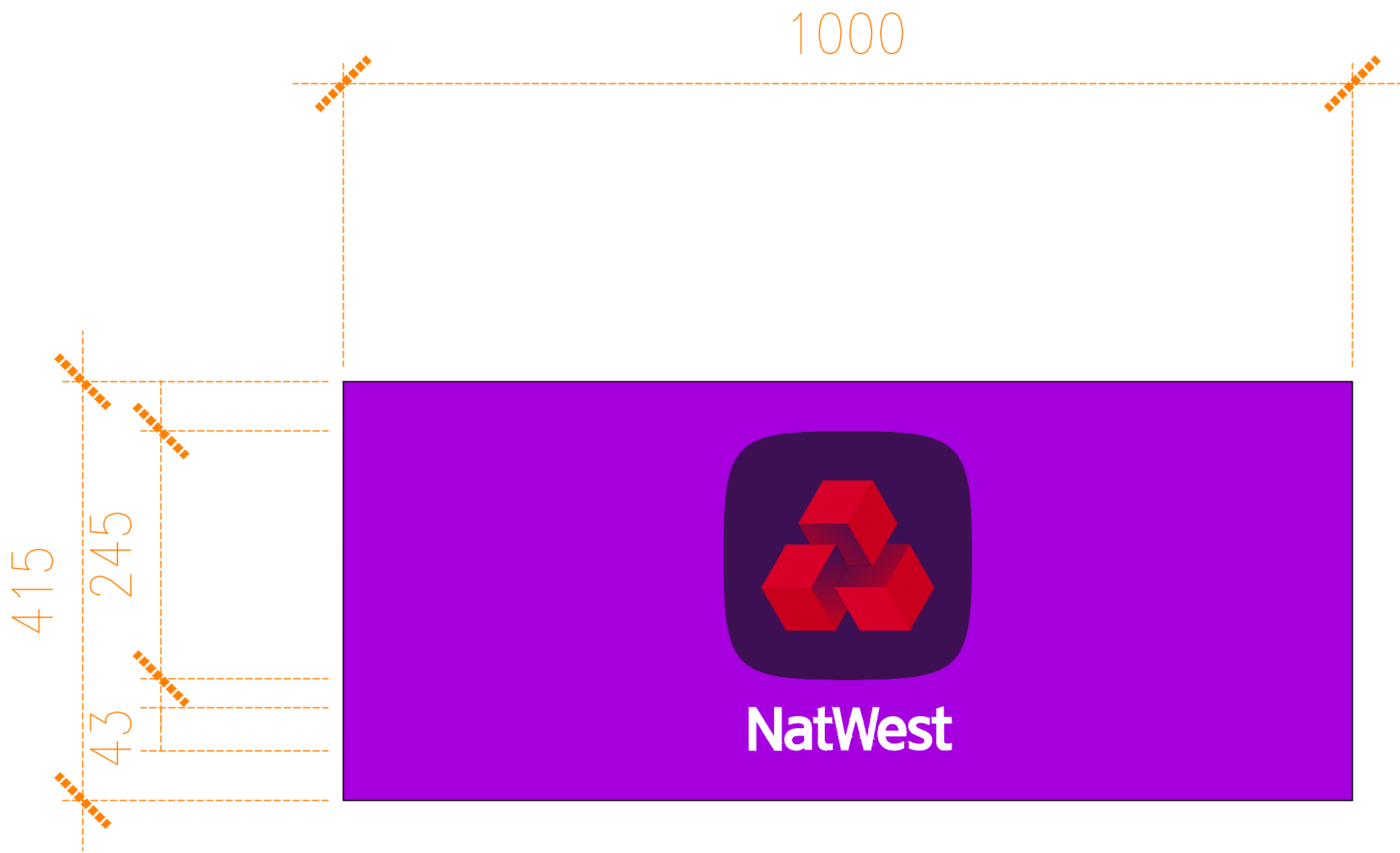


PLAN DETAIL OF ACCENT



Surround Detail 1:1

- 2. PANEL A from 5mm Clear acrylic to have 2.5mm bevelled front edge and router cut out aperture to suit machine type, all edges to have buff polished finish. Panel c/w DTM printed detail to rear, then flooded with d/sided VHB tape except logo area.
- 3. PANEL B from 5mm Clear acrylic to have router cut out aperture to suit machine type, all edges to have buff polished finish. Face of panel c/w csk machine screws set in place with silicone (to avoid damage to PANEL A) prior to being bonded to the rear of PANEL A via VHB tape. Rear of panel flooded with matt Black vinyl to block light except for the Daisy Wheel and Royal Bank of Scotland which illuminate.
- 4. FACE LID from 2.5mm folded aluminium to a depth of 30mm c/w fret cut out aperture to suit machine type and area around logo. Lid to have 25x25x3mm aluminium angle fitted around aperture, all finished Champion Purple (PMS 7678c satin) externally and Traffic White (RAL 9016 gloss) internally (header section).
- 5. FIXING METHOD to be wall or glass mounted using woodtek screws, washers and wall plugs / glass tape for site specific fixing grounds. FACE UNIT located over BACK TRAY and secured through.



Face 1no @ 1:5

- Materials:
- Face panel from clear acrylic.
 - Body from aluminum.
- Colour:
- Body painted Champion Purple - PMS 7678 satin.
 - White lettering - gloss finish
- Size:
- 415mm (h) x 1000mm (w) x 44mm(d)

This drawing is the copyright and property of NatWest Group plc. It must not be copied or published without written consent. Only scale from this drawing for planning consent purposes.

TATE STEVENSON ARCHITECTS LTD

STAZ FLEO VENA

Unit 1 Rawdon Court
Moirā
BT67 0LQ
Tel. +44 (0)28 9261 1222
Fax. +44 (0)28 9261 3834
E-mail studio@tatestevenson.com

MCL & H

McLaughlin & Harvey

rev	date	description	drawn	checked
NatWest Group				
address NW EGREMONT, ATM Bastion Unit, 29 Market Place, Egremont, Cumbria, CA22 2WY				
ref no.		sortcode		
description SSTP Programme ATM SURROUND				
status PLANNING				
IPMS1		sqm		
IPMS2		sqm		
IPMS3		sqm		
scale	1:5, 1:1	paper size	A1	brand
dwn	DEC 24	chk	DEC 24	
drawing number				rev.
1206-16-D-01				